

Product datasheet for **RG209601**

TRIM9 (NM_015163) Human Tagged ORF Clone

Product data:

Product Type:	Expression Plasmids
Product Name:	TRIM9 (NM_015163) Human Tagged ORF Clone
Tag:	TurboGFP
Symbol:	TRIM9
Synonyms:	RNF91; SPRING
Mammalian Cell Selection:	Neomycin
Vector:	pCMV6-AC-GFP (PS100010)
E. coli Selection:	Ampicillin (100 ug/mL)



[View online »](#)

ORF Nucleotide Sequence:

>RG209601 representing NM_015163
 Red=Cloning site Blue=ORF Green=Tags(s)

TTTTGTAATACGACTCACTATAGGGCGGCCGGGAATTCGTCGACTGGATCCGGTACCGAGGAGATCTGCC
 GCC**CGGATCGCC**

ATGGAGGAGATGGAAGAGGAGTTGAAATGCCCCGTGTGCGGCTCCTTCTATCGGGAGCCCATCATCCTGC
 CCTGCTCTCACAATTTGTGT CAGGCGTGCGCCCGCAACATCCTGGTGCAGACCCAGAGTCTGAATCCCC
 CCAGAGCCATCGGGCCGCGGGCTCCGGGGTCTCCGACTATGACTATCTGGACCTGGACAAGATGAGCCTA
 TACAGCGAGGCGGACAGCGGCTATGGCTCTACGGGGGTTTCGCCAGCGCCCCACTACCCCGTCCGAGA
 AGTCCCCAACGGCGTCCGCGTGTTCGCCCGGCTATGCCGCCACCGGCCACCCACTTGTACCGGCCCT
 GGCCCCGTGCCCGCAACTCCTGTATCACCTGCCCCAGTGTACCCGACGCTCATCCTGGATGACCGG
 GGGCTCCGCGGCTCCCCAAGAATCGCGTACTGGAAGGGTAATTGACCGCTACCAGCAGAGCAAAGCCG
 CGGCCCTCAAGTCCAGCTCTGCGAGAAGGCGCCAAGGAAGCCACCGTCATGTGCGAACAGTGCATGT
 CTTCTACTGCGATCCGTGCCGCTGCGTGCACCCGCCCCGGGGCCCCCTAGCCAAGCACCGCCTGGTG
 CCCCCGGCCAGGGTCTGTGTGAGCCGGAGGCTGAGCCCACGCAAGGTCTCCACCTGCACAGACCAGGAGC
 TGGAGAACCACAGCATGTACTGCGTGCAATGCAAGATGCCCGTGTGTACCAGTGCTTGGAGGAGGGCAA
 AACTCCAGCCACGAAGTCAAGGCTCTGGGGGCCATGTGGAACTACATAAGAGCCAGCTCTCCAGGCG
 CTGAACGGACTGTGAGACAGGGCAAAGAAGCCAAGGAGTTTCTGGTACAGCTGCACAACATGGTCCAGC
 AGATCCAGGAGAACAGTGTGGAGTTTGAAGCCTGTCTGGTGGCCCAATGTGATGCCCTCATCGATGCCCT
 CAACAGAAAGAAAAGCCAGCTGCTGGCCCGCTCAACAAGGAGCATGAGCACAAGCTGAAGGTGGTTCGA
 GATCAGATCTCTACTGCACAGTGAATTTGCCCGACACCAGGTCTCATGGAGTACTGCTTGGAGGTGA
 TTAAGGAAAATGATCCTAGTGGTTTTTTGCAAGTTTCTGACGCCCTCATAAGAAGAGTGCACCTGACTGA
 GGATCAGTGGGGTAAAGGCACACTCACTCCAAGGATGACCACGGACTTTGACTTGAGTCTGGACAACAGC
 CCTCTGCTGCAATCCATCCACCAGCTGGATTTCTGCAAGTGAAGCTTCTCTCCAGTCCAGCAACCC
 CTATCCTACAGCTGGAGGAATGTTGTACCCACAACAACAGCGCTACGTTGTCTGGAAAACAGCCACCTCT
 GTCCACGGTGCCCGCGATGGATACATTCTGGAGCTGGATGATGGCAACGGTGGTCAATTCGGGAGGTG
 TATGTGGGAAGGAGACAATGTGCACTGTGGATGGTCTTCACTTCAACAGCACATAACAACGCTCGGGTCA
 AGGCCTTCAACAAAACAGGAGTCAAGCCGTACAGCAAGACCCTGGTCTCCAAACGTCTGAGGTGGCCTG
 GTTTGCTTTCGACCCTGGCTCGGCGCACTCGGACATCATCCTCTCCAATGACAACCTGACAGTGACCTGT
 AGTAGCTATGATGACCGGTGGTGTAGGGAAGACTGGCTTCTCAAGGGCATCCACTACTGGGAGCTCA
 CGGTAGATCGCTATGACAACCACCTGATCCTGCCTTTGGTGTGGCTCGCATGGACGTGATGAAGGATGT
 GATGTTAGGAAAAGACGACAAAGCTTGGGCAATGTATGTGGACAATAACCGGAGCTGGTTCATGCACAAC
 AACTCGCACACCAACAGAAGTGAAGGAGGGATCACAAAAGGGGCCACAATTGGGGTCTCTCTCGACTTCA
 ATAGAAAAAATTGACATTTTTTATCAACGATGAACAACAAGGTCCCATAGCATTGATAACGTGGAGGG
 CCTCTTCTCCCTGCGGTGAGCTGAACAGGAACGTGCAGGTACGCTGCACACCGGGCTCCAGTCCCC
 GACTTCTACTCCAGCAGAGCATCAATAGCC

ACGCGTACGCGGCCGCTCGAG - GFP Tag - GTTTAA

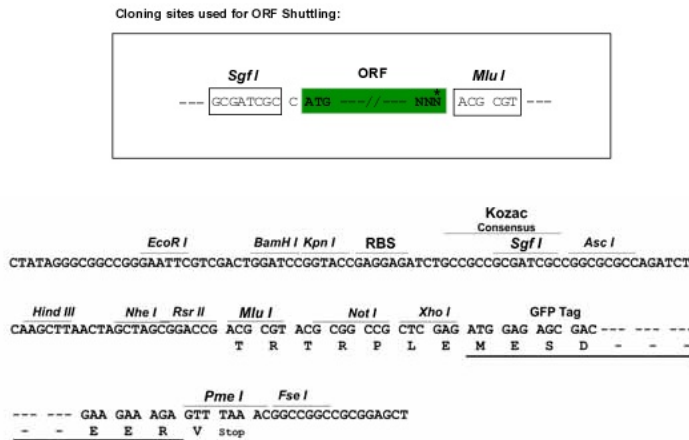
Protein Sequence: >RG209601 representing NM_015163
 Red=Cloning site Green=Tags(s)

```
MEEMEEELKCPVCGSFYREPIILPCSHNLQACARNILVQTPESQPQSHRAAGSGVSDYDLDLDDKMSL
YSEADSGYGSYGGFASAPTTPCQKSPNGVRVFPAMPPTHLSALAPVPRNSCITCPQCHRSLILDDR
GLRGFPKNRVLEGVDRYQQSKAAALKCQLCEKAPKEATVMCEQCDVFYCDPCRLRCHPPRGLAKHRLV
PPAQGRVSRRLSPRKVSTCTDHELENHSMYCVQCKMPVCYQCLEEGKHSSHEVKALGAMWKLHKSQLSQA
LNGLSDRAKEAKEFLVQLRNMVQIQENSVEFEACLVAQCDALIDALNRRKAQLLARVNKEHEHKLKVVR
DQISHCTVKLRQTTGLMEYCLEVIKENDPSGFLQISDALIRRVHLTEDQWKGKTLTPRMTTDFDLSLDNS
PLLQSIHQDLDFVQVKASSPVPATPILQLEECCTHNSATLSWKQPPLSTVPADGYILELDDGNGGQFREV
YVGKETMCTVDGLHFNSTYNARVKAFNKTGVSPYSKTLVLQTSEVAWAFDPGSAHSDIILSNDNLTVTC
SSYDDRVLGKTGFSKGIHWELTVDRYDNHPDPAFGVARMDVMKDVMLGKDDKAWAMYVDNRRSWMFHN
NSHTNRTEGGITKGATIGVLLDFNRKNL TFFINDEQQGPIAFDNVEGLFFPAVSLNRNVQVTLHTGLPVP
DFYSSRASIA
```

TRTRPLE - GFP Tag - V

Restriction Sites: SgfI-MluI

Cloning Scheme:



ACCN: NM_015163

ORF Size: 2130 bp

OTI Disclaimer: The molecular sequence of this clone aligns with the gene accession number as a point of reference only. However, individual transcript sequences of the same gene can differ through naturally occurring variations (e.g. polymorphisms), each with its own valid existence. This clone is substantially in agreement with the reference, but a complete review of all prevailing variants is recommended prior to use. [More info](#)

OTI Annotation: This clone was engineered to express the complete ORF with an expression tag. Expression varies depending on the nature of the gene.

Components: The ORF clone is ion-exchange column purified and shipped in a 2D barcoded Matrix tube containing 10ug of transfection-ready, dried plasmid DNA (reconstitute with 100 ul of water).

Reconstitution Method:

1. Centrifuge at 5,000xg for 5min.
2. Carefully open the tube and add 100ul of sterile water to dissolve the DNA.
3. Close the tube and incubate for 10 minutes at room temperature.
4. Briefly vortex the tube and then do a quick spin (less than 5000xg) to concentrate the liquid at the bottom.
5. Store the suspended plasmid at -20°C. The DNA is stable for at least one year from date of shipping when stored at -20°C.

RefSeq: [NM_015163.4](#), [NP_055978.3](#)

RefSeq Size: 4571 bp

RefSeq ORF: 2133 bp

Locus ID: 114088

UniProt ID: [Q9C026](#)

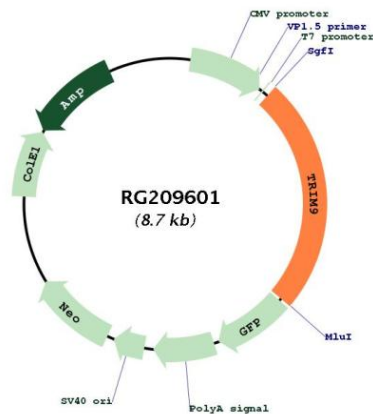
Cytogenetics: 14q22.1

Domains: zf-B_box, BBC, SPRY, FN3

Protein Families: Druggable Genome

Gene Summary: The protein encoded by this gene is a member of the tripartite motif (TRIM) family. The TRIM motif includes three zinc-binding domains, a RING, a B-box type 1 and a B-box type 2, and a coiled-coil region. The protein localizes to cytoplasmic bodies. Its function has not been identified. Alternate splicing of this gene generates two transcript variants encoding different isoforms. [provided by RefSeq, Jul 2008]

Product images:



Circular map for RG209601