

## Product datasheet for **RG209599**

### **ZNF774 (NM\_001004309) Human Tagged ORF Clone**

#### **Product data:**

Product Type:	Expression Plasmids
Product Name:	ZNF774 (NM_001004309) Human Tagged ORF Clone
Tag:	TurboGFP
Symbol:	ZNF774
Mammalian Cell Selection:	Neomycin
Vector:	pCMV6-AC-GFP (PS100010)
E. coli Selection:	Ampicillin (100 ug/mL)



[View online »](#)

**ORF Nucleotide Sequence:**

>RG209599 representing NM\_001004309  
 Red=Cloning site Blue=ORF Green=Tags(s)

TTTTGTAATACGACTCACTATAGGGCGGCCGGAATTCGTGCGACTGGATCCGGTACCGAGGAGATCTGCC  
 GCC**CGGATCGCC**

ATGTGGCTGGGGACTTCAGGGAAGAGTGGGTTACCTGGACACTGCTTAGAGAATCCTCTCCAGGAATGCC  
 ACCCAGCACAGTTAGAAGAATGGGCTCTCAAAGGAATTTCCAGGCCTAGTGAATCTCCAGCCGGAGCA  
 GAAAGAAGAGCCATGGGTCCTACCACTCCAAAACCTTTGAGGCGAGGAAGATCCCGAGGAAAGCCACACA  
 GACTGTGAGCATCAGGTGGCAAAGCTCAATCAGGACAGTTCTGAAACAGCAGAACAATGTGGAACATCCT  
 CAGAAAGGACCAATAAGATCTTTCTCATACTCTTAGTTGGGAGGAACTGGGAGCAAGGCCTAGAATT  
 AGAAGGGCAACATGGAACCTTCCAGGAGAGGGCCAGCTGGAGTCTTTTACAGGAGAGGGATTTAAAC  
 AAGCTCCTGGATGGATATGTAGGAGAGAAGCCTATGTGTGCAGAATGCGGAAAAGCTTTAACAGAGTT  
 CCTATCTCATAAGACACCTAAGAACCACACTGGCGAGAGGCCCTATACGTGCATTGAGTGTGGAAAGG  
 CTTCAAACAGAGCTCAGACCTTGTACCCATCGCAGAACACACAGGAGAGAAGCCCTACCAATGCAAG  
 GGGTGTGAGAAGAAATCAGCGACAGCTCAACTCATCAAACATCAGAGAACCACACAGGGGAGAGAC  
 CCTATGAGTGCCAGAGTGTGGAAGACTTTTGGGCGGAAGCCACACCTATAATGCACCAAGAACCCA  
 CACAGGCGAGAAGCCCTACGCGTGCCTGGAATGTCAAAAAGCTTCAGTCGAAGCTCAAATTTATCACT  
 CACCAGAGGCCACACAGGGGTGAAGCCTTACAGGTGAATGACTGTGGGGAGAGTTTTAGCCAGAGCT  
 CGGATTTGATTAAGCACCAACGAACCCACACGGGAGAACGGCCCTCAAATGCCCGGAGTGCGGGAAGGG  
 CTTAGAGATAGTTCTCATTGTTAGCTCACATGAGCACTCATTAGGAGAGAGGCCCTTTCAGTTGTCCT  
 GACTGCCAAAAAGCTTCAGTCAGAGCTCACATTTGGTCACGCACAAAGAACACACACAGGTGAGAGAC  
 CTTTTAAGTGCAGAAAACGTGGGAAAGGATTCGCCGACAGCTCCGCCCTCATTAAAGCACCAACGAATCCA  
 CACCGGAGAAAAGACCCTACAAATGTGGAGAGTGTGGGAAGAGCTTCAATCAGAGCTCCCACCTTTATTACC  
 CATCAGCGAATCCAATAGGAGACAGGCCCTATCGATGTCCTGAGTGTGGCAAGACCTTCAATCAGCGTT  
 CCCATTTCTCACACACCAGAGAACGCATACAGGAGAAAAACCTTCCACTGTAGTAAATGTAACAAGAG  
 CTTCCGTCAGAAAAGCGCATCTTTTATGCCATCAAAACACCCATTTGATT

AG**CGGACCG**ACGCGTACGCGGCCGCTCGAG – GFP Tag – GTTTAA

**Protein Sequence:**

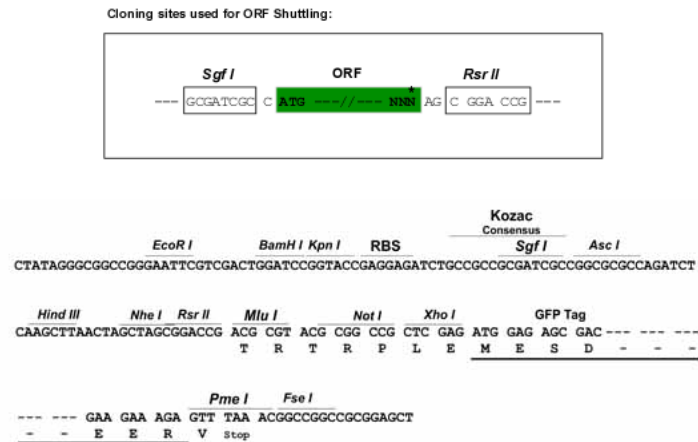
>RG209599 representing NM\_001004309  
 Red=Cloning site Green=Tags(s)

MWLGTSKSGPLPGHCLENPLQECPAQLLEEWALKGISRPSVISQPEQKEEPWVLPQNFEARKIPRESHT  
 DCEHQVAKLNQDSSETAEQCGTSSERTNKDLSHTLSWGGNWEQGLELEGQHGTLPGEGQLESFSQERDLN  
 KLLDGYVGEKPMCAECGKSFNQSSYLIRHLRHTGERPYTCIECGKGFQSSDLVTHRRHTGKPYQCK  
 GCEKKFSDSSTLIKHQHTHTGERPYECPGKTFGRKPHLIMHQHTHTGKPYACLECHKFSRSSFIT  
 HQHTHTGVKPYRCNDCGESFSQSSDLIKHQHTHTGERPFKPECGKGFDRSSHFVAHMSTHGERPFSCP  
 DCHKFSQSSSLVTHQHTHTGERPFKENCCKGFADSSALIKHQHTHTGERPYKCGECGKSFNQSSHFIT  
 HQRIHLGDRPYRCPECGKTFNQSHFLTHQHTHTGKPFHCSKCNKSFQKAHLLCHQNTHLI

SGP**TRRRLE** – GFP Tag – V

**Restriction Sites:**

Sgfl-RsrII

**Cloning Scheme:**


**ACCN:** NM\_001004309

**ORF Size:** 1449 bp

**OTI Disclaimer:** The molecular sequence of this clone aligns with the gene accession number as a point of reference only. However, individual transcript sequences of the same gene can differ through naturally occurring variations (e.g. polymorphisms), each with its own valid existence. This clone is substantially in agreement with the reference, but a complete review of all prevailing variants is recommended prior to use. [More info](#)

**OTI Annotation:** This clone was engineered to express the complete ORF with an expression tag. Expression varies depending on the nature of the gene.

**Components:** The ORF clone is ion-exchange column purified and shipped in a 2D barcoded Matrix tube containing 10ug of transfection-ready, dried plasmid DNA (reconstitute with 100 ul of water).

**Reconstitution Method:**

1. Centrifuge at 5,000xg for 5min.
2. Carefully open the tube and add 100ul of sterile water to dissolve the DNA.
3. Close the tube and incubate for 10 minutes at room temperature.
4. Briefly vortex the tube and then do a quick spin (less than 5000xg) to concentrate the liquid at the bottom.
5. Store the suspended plasmid at -20°C. The DNA is stable for at least one year from date of shipping when stored at -20°C.

**Note:** Plasmids are not sterile. For experiments where strict sterility is required, filtration with 0.22um filter is required.

**RefSeq:** [NM\\_001004309.1](#), [NP\\_001004309.1](#)

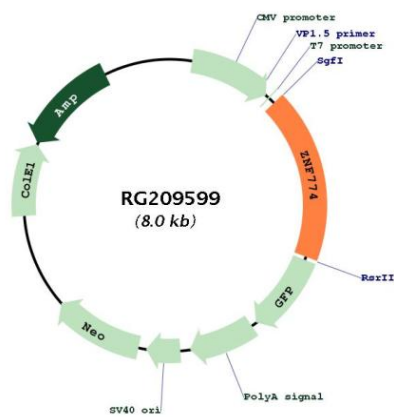
**RefSeq Size:** 1790 bp

**RefSeq ORF:** 1452 bp

**Locus ID:** 342132

UniProt ID: [Q6NX45](#)  
Cytogenetics: 15q26.1  
Gene Summary: May be involved in transcriptional regulation.[UniProtKB/Swiss-Prot Function]

### Product images:



Circular map for RG209599