

## Product datasheet for **RG209595**

### HA1 (ARHGAP45) (NM\_012292) Human Tagged ORF Clone

#### Product data:

Product Type:	Expression Plasmids
Product Name:	HA1 (ARHGAP45) (NM_012292) Human Tagged ORF Clone
Tag:	TurboGFP
Symbol:	HA1
Synonyms:	HA-1; HLA-HA1; HMHA1
Mammalian Cell Selection:	Neomycin
Vector:	pCMV6-AC-GFP (PS100010)
E. coli Selection:	Ampicillin (100 ug/mL)
ORF Nucleotide Sequence:	>RG209595 representing NM_012292 Red=Cloning site Blue=ORF Green=Tags(s)

TTTTGTAATACGACTCACTATAGGGCGGCCGGAATTCGTCGACTGGATCCGGTACCGAGGAGATCTGCC  
GCC**CGATCGCC**

ATGTTCTCCAGGAAGAAACGAGAGCTCATGAAAACCCCTTCCATCTCGAAAAAGAACC GCGCGGGAAGCC  
CCAGCCCCGAGCCCTCGGGGAGCTGCCAGGAAGGATGGGGCTGACGCGGTGTTCCCGGACCAAGCCT  
GGAGCCGCCCGCTGGGTCTCCGGCGTCAAGGCCACAGGGACCCTCAAGCGGCCACCAGCCTGAGCCG  
CAGCCAGCGCGGCTGGTTCCTCCGGCTCAAGGCCACAGGGACCCTCAAGCGGCCACCAGCCTGAGCCG  
CACTGACAGCCGCGAGCCGCGGCGAGCTGCCACCGAGGGTGCCGCCCCGAGCGTCTGAGGACATCTC  
CCATCTGCTGGCGGACGTGGCCCCGTTCTGCTGAGGGCCTTGAGAACTTAAGGAGTGTGTGCTGCATGAC  
GACCTCCTTGAGGCCCGCCGCGCCGCGGGCCACGAGTGCCTGGGTGAGGCTCTGCGTGCATGCATCAGA  
TCATCTCCAAGTACCCGCTGCTGAACACCGTGGAGACGCTCACCGCAGCCGGCACCCCTATTGCCAAGGT  
CAAAGCCTTCCATTATGAGAGCAACAATGATCTGGAGAAACAGGAGTTCGAGAAGGCCCTGGAGACGATT  
GCTGTGGCCTTCAGTAGCACAGTGTCCGAGTTCCTCATGGGTGAAGTGGACAGCAGCACCCTCCTAGCAG  
TGCTCCTGGGGACTCGAGCCAGTCCATGGAAAGCCTGTATGGACCGGCAGTGAAGGACGCGCTCCCAG  
CCTGGATGACTGTGACCGCGCTGCCTGCCCGCCGAGGAGGTGGACGTGCTGCTACAGCGCTGTGAGGGG  
GGCGTGGATGCCGCACTGTATGCCAAGAACATGGCCAAGTACATGAAGGACCTCAGCTACCTGG  
AGAAGCGGACGACGCTGGAGATGGAGTTTGCCAAGGGCCTGCAGAAGATCGCTCACAACCTGCAGACAGAG  
CGTCATGCAGGAGCCCCACATGCCGCTCCTGTCCATCTACTCGCTGGCCCTGGAGCAGGACCTGGAGTTC  
GGCCACAGCATGGTGCAGGCGGTGGGCACCTTGCAGACCCAGACCTTCATGCAGCCCTGACCTGCGGC  
GGCTTGAACACGAGAAGCGCAGGAAGGAGATCAAGGAGCCTGGCACCGTCCCAGAGGAAGCTGCAAGA  
GGCGGAGTCCAACCTGCGCAAGGCCAAGCAGGGTTACGTGCAGCGCTGCGAGGACCACGACAAGGCTCGC  
TTCTCGTGGCCAAGGCGGAGGAGGAGCAGGCTGGCAGCGCGCCGGGAGCAGGCGGCACGCCACCAAGA  
CCCTGGACAAGCGCGCGGCTGGAGGAGGAGGCCAAGAACAAGCGGAGGAAGCTATGGCCACCTACCG  
CACCTGCTGGCCGACGCGAAGACGAGAAGCAGGAGCTGGAGGATACCAAGGTGACGGCGCTGCGGAC



[View online »](#)

ATCCAGGAGGTCATCCGGCAGAGCGACCAACCATCAAGTCGGCCACGATCTCCTACTACCAGATGATGC  
 ATATGCAGACGGCGCCGCTGCCCGTGCCTTCCAGATGCTGTGTGAGAGCAGCAAGCTGTATGACCCAGG  
 CCAGCAGTACGCCTCCCACGTGCGCCAGCTGCAGCGGGACCAGGAGCCCGATGTGCACTACGACTTTGAG  
 CCCACGTCTCCGCCAACGCCTGGTCCCCCGTCATGCGTGCCCGGAAGAGCAGCTTCAACGTGAGTGATG  
 TGGCGCGCCCGAGGCTGCCGGGAGCCCCAGAAGAAGCGGGTGCCTGAGGGCACACCTGCCAAGGA  
 CCACAGGGCCGGGCGAGGACACCAAGTTCACAAGTTCGAGCGGACGTCATCCAGTGTACCATTCGT  
 CTGGACCCCGCCCTGGCGCAGGGGACTTAAAGAAGTTCGAGCGGACGTCATCCAGTGTACCATTCGT  
 CCACGGAGGAGCTGGTGGACCCAGACGCTGGAGCCGGGGCTTACGCTTTGAGCAGGCTGACCTCAACGG  
 CATGACCCCGAGCTGCCGGTGGCCGTGCCAGTGGACGTTCCGCCACGAGGGGTGTCCAAGCGGCC  
 CGTACTACCCGGCTCCGGAAGCTCCGCACGCCCGCAAGTCCCGCAGTGAACAGCTACGTCTACTTCC  
 AGGGTGTGAGTGTGAAGAGTGTGCTGGCCTGCCACAAGAAATGTCTGGAGACGCTGGCCATACAGTG  
 CGGGCACAAGAAGCTGCAGGGCCGCTGCAGCTGTTCCGGCAGGACTTACGCCACGCGGCCCGCAGCGCC  
 CCCGACGGCGTCCCTTTCATCGTCAAGAAGTGCCTGCGAGATCGAGCGGGGGCTGCGCACAAGG  
 GCATCTACCGGGTCAATGGGTAAAGACACGCGTGGAGAAGCTGTCCAGGCCTTCGAGAACGGCAAGGA  
 GCTGGTCGAGCTGTCGACGGCTCGCCCCACGACATCAGCAACGCTCTCAAGCTTACCTGCGTCAGCTT  
 CCCGAGCCGCTCATCTCCTTCCGCTTACCACGAGCTCGTAGGGCTGGCCAAGGACAGCCTGAAGGCGAG  
 AGGCCGAGGCCAAGGCGCGTCCCGGGCCGGCAGGACGCTCGGAGAGCGAGGCAAGTGGCGGTGGCCCT  
 GGCAGGTCCGGTCCGGGAGCTCCTGCCGGACCTGCCCGCTGAGAACCGGGCTCGCTGCAGTACCTGCTG  
 CGTCACTACGCAGGATCGTGGAGTGGAGCAGGACAACAAGTACCCCGGGAACCTGGGCATCGTGT  
 TCGGGCCACGCTGCTTCCGGCCACGGCCACCGAGGCCACCGTGTCCCTCTCCTCCCTGGTGGATTATCC  
 CCATCAGGCCCGCTCATCGAGACTTTCATCGTCCACTACGGCTGGTCTTCGAGGAGGAGCCGGAGGAG  
 ACCCCCGGGGCCAGGACGAGTCAACACGAGCTGAGGTAGTGTCCAGGTGCCCTACCTGGAGG  
 CGGGCAGGCGGTGGTCTACCCGCTGCAGGAGCGGGCGGGCAGGGTGCAGAGAATCCCGAGTTGTGTC  
 CAACGATTCCGACTCGGACCTAGAGGAGCCCTCCGAGCTGCTGTCTCATCGGAGGCCAGTGCCTGGGC  
 CACCTCAGCTTCTGGAGCAGCAGCAGAGCGAGGCCAGCCTAGAGGTGGCTTCTGGCAGCCACAGCGGCA  
 GTGAGGAGCAGCTGGAGGCCACAGCCGGGAGGACGGGGACGGGACGAGGACGGCCCGCCAGCAGCT  
 CTCAGGATTCAACACCAACCAAGTCCAACAACGCTGCTGCAGGCCCACTGCCCCCATGAGGCTCCGTGGC  
 GGGCGGATGACTGGGCTCTGCAGGAAAGGCAGCCGGAATTCGTG

AGCGGACCGACGCGTACGCGGCCGCTCGAG – GFP Tag – GTTTAA

**Protein Sequence:**

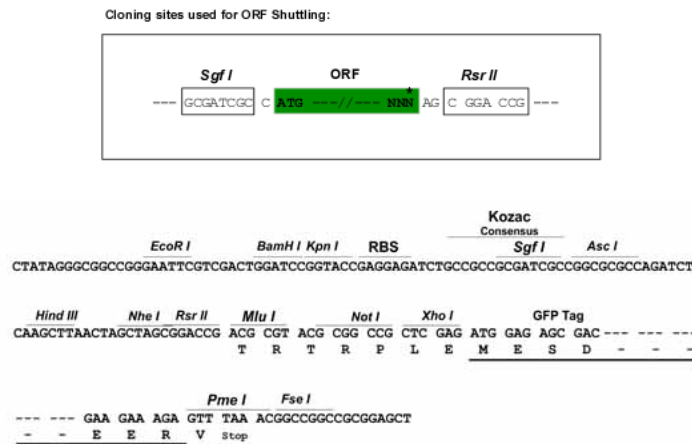
>RG209595 representing NM\_012292  
 Red=Cloning site Green=Tags(s)

MFSRKKRELMKTPSISKKNRAGSPSPQPSGELPRKDGADAVFPGPSLEPPAGSSGVKATGTLKRPTLSR  
 HASAAGFPLSGAASWTLGRSHRSPLTAASPGELPTEGAGPDVVEDISHLLADVARFAEGLEKKECVLHD  
 DLLLEARPPRAHECLGEALRVMHQIISKYPLLNTVETLTAAGTLIAKVKAHYESNNLEKQEFKALETI  
 AVAFSSTVSEFLMGEVDSSTLLAVPPGDSQSMESELYGPGSEGTPPSLDDCDAGCLPAEEVDVLLQRCGE  
 GVDAALLYAKNMAKYMKDLISYLEKRTTLEMEFAKGLQKIAHNCRQSVMQEPHMPLLSIYSLALEQDLEF  
 GHSMVQAVGTLQTQTFMQPLTLRRELEHEKRRKEIKEAWHRAQRKLQEAESNLRKAKQGYVQRCEHDHKA  
 RFLVAKAEQQAGSAPGAGGTATKTLDKRRRLEEEAKNKAEEAMATYRVCVADAKTQKQLEDTKVTLRQ  
 IQEVIRQSDQTIKSATISYYQMMHMQTAPLPVHFQMLCESSKLYDPGQQYASHVRQLQRDQEPDVHYDFE  
 PHVSANAWSPVMARKSSFNVSVARPEAAGSPPEEGGCTEGTPAKDHRAGRGHQVHKSWPLSISDSDSG  
 LDPGPGAGDFKFFERTSSSGTMSSTEELVDPDGAGASAFEQADLNGMTPPELPAVAVPSGPFRRHEGLSKAA  
 RTHRLRKLRTPAKCRENSYVYFQGAEECECLACHKKCLETLAIQCCHKLQGRLLQDFGQDFSHAARSA  
 PDGVVPIVKKCVCEIERRALRTKGIYRVNGVKTRVEKLCQAFENGKELVELSQASPHDISNVLKL YLRQL  
 PEPLISFRLYHELVLAKDSLKAEAEAKAASRGRQDGESEAVAVALAGRLRELLRDLPPENRASLQYLL  
 RHLRRIVEVEQDNKMTGNLGI VFGPTLLRPRPTATVSLSSLVDYPHQARVIETLIVHYGLVFEEPEE  
 TPGQDESSNQRAEVVVQVPYLEAGEAVVYPLQEAADGCRESRVSNDSDSLSEASELLSSSEASALG  
 HLSFLEQQQSEASLEVASGSHSGSEEQLEATAREDDGDGDEGPAQQLSGFNTNQSNVQLQAPLPPMRLRG  
 GRMTLGSCRERQPEFV

SGPTRRRLE – GFP Tag – V

Restriction Sites: SgfI-RsrII

Cloning Scheme:



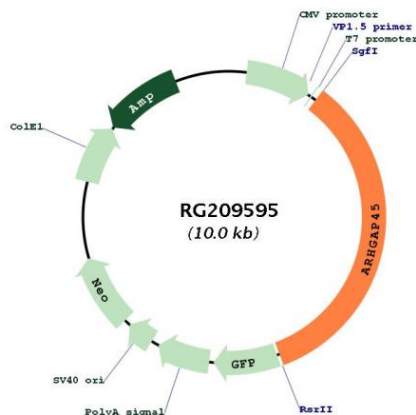
ACCN: NM\_012292

ORF Size: 3408 bp

OTI Disclaimer: The molecular sequence of this clone aligns with the gene accession number as a point of reference only. However, individual transcript sequences of the same gene can differ through naturally occurring variations (e.g. polymorphisms), each with its own valid existence. This clone is substantially in agreement with the reference, but a complete review of all prevailing variants is recommended prior to use. [More info](#)

- OTI Annotation:** This clone was engineered to express the complete ORF with an expression tag. Expression varies depending on the nature of the gene.
- Components:** The ORF clone is ion-exchange column purified and shipped in a 2D barcoded Matrix tube containing 10ug of transfection-ready, dried plasmid DNA (reconstitute with 100 ul of water).
- Reconstitution Method:**
1. Centrifuge at 5,000xg for 5min.
  2. Carefully open the tube and add 100ul of sterile water to dissolve the DNA.
  3. Close the tube and incubate for 10 minutes at room temperature.
  4. Briefly vortex the tube and then do a quick spin (less than 5000xg) to concentrate the liquid at the bottom.
  5. Store the suspended plasmid at -20°C. The DNA is stable for at least one year from date of shipping when stored at -20°C.
- RefSeq:** [NM\\_012292.1](#)
- RefSeq Size:** 4349 bp
- RefSeq ORF:** 3411 bp
- Locus ID:** 23526
- UniProt ID:** [Q92619](#)
- Cytogenetics:** 19p13.3
- Gene Summary:** Contains a GTPase activator for the Rho-type GTPases (RhoGAP) domain that would be able to negatively regulate the actin cytoskeleton as well as cell spreading. However, also contains N-terminally a BAR-domain which is able to play an autoinhibitory effect on this RhoGAP activity.[UniProtKB/Swiss-Prot Function]

### Product images:



Circular map for RG209595