

## Product datasheet for **RG209583**

### PLEKHG4 (NM\_015432) Human Tagged ORF Clone

#### Product data:

Product Type:	Expression Plasmids
Product Name:	PLEKHG4 (NM_015432) Human Tagged ORF Clone
Tag:	TurboGFP
Symbol:	PLEKHG4
Synonyms:	ARHGEF44; PRTPHN1; SCA4
Mammalian Cell Selection:	Neomycin
Vector:	pCMV6-AC-GFP (PS100010)
E. coli Selection:	Ampicillin (100 ug/mL)
ORF Nucleotide Sequence:	>RG209583 representing NM_015432 Red=Cloning site Blue=ORF Green=Tags(s)

TTTTGTAATACGACTCACTATAGGGCGGCCGGAATTCGTCGACTGGATCCGGTACCGAGGAGATCTGCC  
GCC**CGATCGCC**

ATGGAAGGCCCTGGAGAATGGGGATGAGTCCCCAGACTCTCAGGGCCATGCCACCGACTGGAGATTTG  
CTGTGTGCAGTTTCAGGGATGCCTGGGAAGAGGAGGAACCTGCTTCCCAGATGCACGTTAAGGACCCAGG  
TCCTCAAAGACCACCAGCCGGGGCCACCCAGGATGAGGAGCTACAGGGCAGCCCCCTGTCCAGGAAATTC  
CAGTTACCCAGCTGCAGATGAGTCGGGGATGCCAGAGGGGCACAGTAGAAAGCTCCTCAGTCTGT  
CAGAAGGGCCAGGCCCTCTGGAGTGGAGAGTCTCCTATGCCCATGTCCTCCACCTCAGTTGGCACA  
GGGTGAGAGTGACACCCAGGGGTAGGGTTGGTAGGGGACCCAGGTCCAAGCAGGGCGATGCCATCTGGC  
TTGAGCCCTGGGCATTGGACAGCGACCCTGTGGGCTTGGAGACCCCTTATCAGAAATATCAAAGCTGC  
TGGAGGCAGCCCCAGTGGATCCGGCCTCCCTAAGCCTGCTGACTGCCTCCTGGCCCAAGACCTCTGTTG  
GGAGCTGCTGGCCAGTGGTATGGCCACCTTGCCAGGGACTCGGGATGTCCAAGGCCGGGCAGTGTGCTT  
CTGTGTGCCACAGCCAGCCTGGCTTCACTGAGTGCAGCAGCCAGGAACTCATCCGCCTCCTGCTGT  
ACCTGCGAAGCATCCCCAGGCCGAAGTACAGGCACTGGGACTGACAGTGTAGTTGATGCCGAATTTG  
TGCTCCAAGTTCTTCCCTCTTCTGGGCTCAGCCAATAACAAGAAGCAGCCCCAGGGCCGTGTACCAG  
GTGCTGCTAGTGGGAAGCAGCTGCTGAAGGAAGTGCCTTCCGGGCTGCAGCTGGAGCAGTTGCCCTTCTC  
AGAGCCTGCTGACCCACATCCCAACGGCGGGCTGCCCACTTCGCTAGGAGGAGGCTGCCTTACTGCCA  
CCAGGCCTGGCTGGATTTCCGAAGCGGCTGGAAGCTCTACTACAGAAGTCCAGGCAGCTTGTGCCCTG  
CTCCAGGGGGCCATCGAAAGTGTGAAGGCTGTGCCCCAGCCATGGAGCCTGGGAGGTCCGTGCTGCTG  
TACAGCAGACAGAGGTCCTGATGCAGCAGGTGCTAGACTCGCCATGGCTGGCATGGCTACAATGCCAGGG  
GGGCCGGGAGCTGACATGGCTGAAGCAAGAGGTCCAGAGGTGACCTGAGCCAGACTACAGGACGGCA  
ATGGACAAGGCTGACGAGCTATATGACCGGTGGATGGATTGCTGCACCAACTGACCTGCAGAGCAACC  
AGCGAATACAGGCCCTAGAGTTGGTCCAAACACTGGAGGCCCGGAAAGCGGACTGCACCAGATTGAAGT  
GTGGCTGCAGCAGGTGGCTGGCCAGCACTGGAGGAGGCTGGGGAGCCCTCGCTGGACATGCTGCTCCAG



[View online »](#)

GCCCAAGGCTCTTTTCAGGAGCTGTACCAGGTTGCCCAGGAGCAGGTGAGCAAGGGGAGAAGTTTCTGC  
AGCCGCTGACTGGCTGGGAGGCGGCTGAACTGGACCCCTGGGGCAGCTTTCTGGCCCTGCGAGCCCA  
GCTGACTGAATCTCTAGGGCTTTGGCCAGCGGTGCCAGCGGCTGGCGGATGCTGAGAGGCTGTTTCAG  
CTCTTCAGGGAGGCTTGACGTGGGCTGAGGAGGGGCAGCGAGTGTGGCAGAGCTGGAGCAGGAACGCC  
CGGGGTTGTGTTGCAGCAGCTGCAGCTGCACTGGACCAGGCACCCTGACTTGCCCTCTGCCACTTCCG  
AAAGATGTGGGCTCTGGCCACGGGGCTGGGCTCAGAGGCCATCCGCCAGGAGTCCGCTGGGCTGGGCG  
CGGTGCCAGGACACCTGGCTGGCCCTGGACCAAAAGCTTGAGGCTTCACTGAAGCTACCACCGTGGGCA  
GCACAGCTAGCCTGTGTGTGAGCCAGGTCCCGCTGCACCTGCCACCCTCCCTGAGGAAGGCCTACAG  
CTTCGATCGAATCTGGGGCAGAGTCTCAGTGAACCTGCCTGCCACTGCCACCATGCGGCCACTATTGCT  
GCCTGCCGAGACCAGAGGCTGGAGGAGGTGCCCTGCCCAGGCATCCCTACTGTGCCTCCACCAGGCA  
GCTCTGACCCAGGAGCCTCAACAGGCTACAGCTGGTGTGGCAGAGATGGTGGCCACGGAGCGGGAGTA  
TGTCCGGGCTCTAGAGTACACTATGGAGAACTATTTCCCGAGCTGGATCGCCCCGATGTGCCCAGGGC  
CTCCGCGTCAAGCTGCCACCTCTTTGGCAACCTGGAGAAGCTGCGGGACTTCCACTGCCACTTCTTCC  
TGCGTGAGCTGGAGGCTGCACCCGGCACCCACAGAGTGGCCTATGCCTTCTGCGCCATAGGGTGCA  
GTTTGGGATGTACGCGCTCTACAGCAAGAATAAGCCTCGTCCGATGCCCTGATGTCAAGCTATGGGCAC  
ACCTTCTCAAGGACAAGCAGCAAGCACTGGGGGACCACCTGGACTGGCCTCTACCTGTAAAGCCCA  
TCCAGCGCATGGGCAAGTACGCACTGCTGCTGCAGGAGCTGGCACGGGCCTGCGGGGGCCCCACGAGGA  
GCTCAGTGCCTGCGGGAGGCCAGAGCCTTGTGCACTTCCAGCTGCGGCACGGAAACGACCTGCTGGCC  
ATGGACGCCATCCAGGGCTGTGATGTTAACCTCAAGGAACAGGGGAGCTGGTGCACAGGATGAGTTTG  
TGGTGCAGCTGGGGCCACAAGTCCGTGCGCCGATCTTCTTTTTGAGGAGCTGCTGCTTTCAGCAA  
GCCTCGCCATGGGCCACAGGGTTGACACATTTGCCTACAAGCGCTCCTTCAAGATGGCAGACCTTGGT  
CTCACTGAGTGTGTTGGAAACAGCAACCTGCGCTTCGAGATCTGGTTCGCCGCCGCAAGGCCAGGGACA  
CCTTTGTGCTGCAGGCCCTCCAGCCTGGCTATCAAGCAGGCTGGACAGCTGACATCTCCACCTGCTTTG  
GAGGCAGGCCGTCCACAACAAGGAGGTGCGCATGGCTGAGATGGTGTCCATGGGTGTGGGAAACAAGGCC  
TTCGAGACATTGCTCCAGCGAGGAAGCCATCAACGACCGCACCGTCAACTATGCTCTGAAGTGCCGAG  
AAGTTCGCTCTCGGGCGTCCATTGCCGTAGCCCGTTTGACCATGACAGCCTCTACCTGGGGCCTCGAA  
CTCCCTTCTGGAGACCCTGCCTCTTGCTCTGTTCTGGGGTCCCTCAACCTGCACCTGTACAGAGACCCA  
GCTCTTCTGGGTCTCCGCTGTCCCTGTATCCAGCTTCCAGAGGAAGCAGCACTGGAGGCTGAGGCAG  
AGCTGGGCGGCCAGCCCTCTTTGACTGCTGAGGACTCAGAGATCTCGTCCAATGCCATCAGCCAGTGG  
CTCCAGTGGCTCTGACAGCAGCTGTGTGTGAGGGCAGGCCCTGGGTAGGGGCTGGAGGACTTACCCTGT  
GTC

ACGCGTACGCGGCCGCTCGAG - GFP Tag - GTTTAA

**Protein Sequence:** >RG209583 representing NM\_015432  
 Red=Cloning site Green=Tags(s)

```

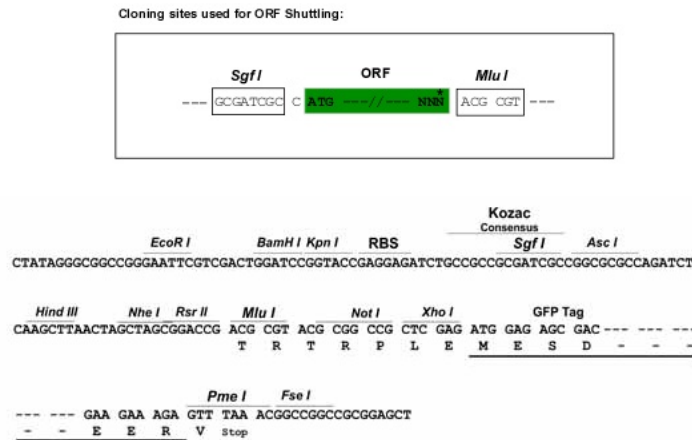
MERPLENGDESPDSQGHATDWRFAVCSFRDAWEEEEEPASQMHVKDPGPPRPPAGATQDEELQGSPLSRKF
QLPPAADESGDAQRTVESSSVLSEGPGPSGVESELLCPMSSHLSLAQGESDTPGVGLVGDPPSRAMPSG
LSPGALSDPVLGDPLSEISKLEAAPSGSGLPKPADCLLAQDLCWELLASGMATLPGTRDVGRAVLL
LCAHSPAWLQSECSSQELIRLLLYLRSIPRPEVQALGLTVLVDARICAPSSSLFSGLSQLQEAAPGAVYQ
VLLLVGSTLLKEVPSGLQLEQLPSQSLLTHIPTAGLPTSLGGGLPYCHQAWLDFRRRLEALLQNCQAACAL
LQGAIESVKAVPQPMPEGEVQQLLQQTEVLMQQVLDSPWLAWLQCQGGRELTLWKQEVPEVTLSPDYRTA
MDKADEL YDRVDGLLHQLTLQSNQRIQALELVQTL EARESLHQIEVWLQQVWPALEEAGEPSLMDLLQ
AQGSFQEL YQVAQE QVRQGEKFLQPLTGWEAAELDPPGARFLALRAQLTEFSRALAQRCQLADAERLFQ
LFREALTWAEEGQRLVAELQERPGVVLQQLQLHWTRHPDLPPAHFRKMWALATGLGSEAIRQECRWAWA
RCQDTWLALDQKLEASLKLPPVGSTASLCVSVPAAPAHPPLRKAYSFDRNLGQSLSEPACHCHAATIA
ACRRPEAGGALPQASPTVPPPSSDPRSLNRLQLVLAEMVATEREYVRALEYTMENYFPELDRPDVPPG
LRGQRAHLFGNLEKLRDFHCHFRLRELECTRHPPRVAYAF LRHRVQFGMYALYSKNKPRSDALMSSYGH
TFFKDKQALGDHLDLASYLLKPIQRMGKYALLLQELARACGGPTQELSALREAQSLVHFQLRHGNDLLA
MDAIQGGDVNLKEQGQLVRQDEFVVRTGRHKS VRRIFLFEELLLFSKPRHGPTGVDTFAYKRSFKMADLG
LTECCGNLNRFEIWFRRRKARDTFVLQASSLAIKQAWTADISHLWRQAVHNKEVRMAEMVSMGVGNKA
FRDIAPSEEAINDRTVNYVLKCREVRSRASIAPFDHDSL YLGASNSLPGDPASC SVLGSLLNHL YRDP
ALLGLRCLPL YSFP EEAALAEAEELGGQPSLTAEDSEISSQCPSASGSSGSDSSCVSGQALGRGLEDLPC
V
    
```

TRTRPLE - GFP Tag - V

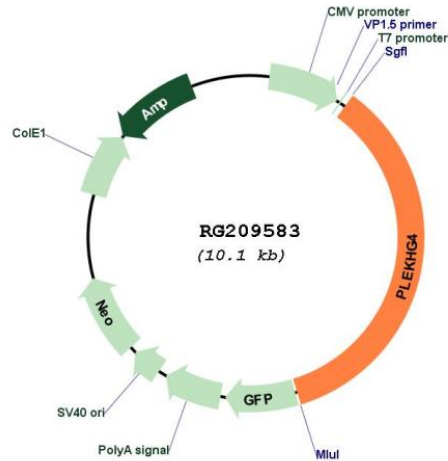
**Restriction Sites:**

SgfI-MluI

**Cloning Scheme:**



**Plasmid Map:**



**ACCN:** NM\_015432

**ORF Size:** 3573 bp

**OTI Disclaimer:** The molecular sequence of this clone aligns with the gene accession number as a point of reference only. However, individual transcript sequences of the same gene can differ through naturally occurring variations (e.g. polymorphisms), each with its own valid existence. This clone is substantially in agreement with the reference, but a complete review of all prevailing variants is recommended prior to use. [More info](#)

**OTI Annotation:** This clone was engineered to express the complete ORF with an expression tag. Expression varies depending on the nature of the gene.

**Components:** The ORF clone is ion-exchange column purified and shipped in a 2D barcoded Matrix tube containing 10ug of transfection-ready, dried plasmid DNA (reconstitute with 100 ul of water).

**Reconstitution Method:**

1. Centrifuge at 5,000xg for 5min.
2. Carefully open the tube and add 100ul of sterile water to dissolve the DNA.
3. Close the tube and incubate for 10 minutes at room temperature.
4. Briefly vortex the tube and then do a quick spin (less than 5000xg) to concentrate the liquid at the bottom.
5. Store the suspended plasmid at -20°C. The DNA is stable for at least one year from date of shipping when stored at -20°C.

**RefSeq:** [NM\\_015432.3](#), [NP\\_056247.1](#)

**RefSeq Size:** 6818 bp

**RefSeq ORF:** 3576 bp

**Locus ID:** 25894

**Cytogenetics:** 16q22.1

**Gene Summary:**

The protein encoded by this gene can function as a guanine nucleotide exchange factor (GEF) and may play a role in intracellular signaling and cytoskeleton dynamics at the Golgi apparatus. Polymorphisms in the region of this gene have been found to be associated with spinocerebellar ataxia in some study populations. Alternative splicing results in multiple transcript variants. [provided by RefSeq, Jan 2015]