

Product datasheet for **RG209546**

FXR2 (NM_004860) Human Tagged ORF Clone

Product data:

Product Type:	Expression Plasmids
Product Name:	FXR2 (NM_004860) Human Tagged ORF Clone
Tag:	TurboGFP
Symbol:	FXR2
Synonyms:	FMR1L2; FXR2P
Mammalian Cell Selection:	Neomycin
Vector:	pCMV6-AC-GFP (PS100010)
E. coli Selection:	Ampicillin (100 ug/mL)



[View online »](#)

ORF Nucleotide Sequence:

>RG209546 representing NM_004860
 Red=Cloning site Blue=ORF Green=Tags(s)

TTTTGTAATACGACTCACTATAGGGCGGCCGGAATTCGTCGACTGGATCCGGTACCGAGGAGATCTGCC
 GCC**CGGATCGCC**

ATGGGCGGCTGGCCTCTGGGGGGATGTGGAGCCGGACTGCCCGTCGAGGTGCGCGGCTCCAACGGGG
 CCTTCTACAAGGCTTTGTGAAGGATGTCCATGAAGACTCTGTCACCATCTTCTTTGAAAACAACCTGGCA
 GAGTGAGAGACAAATTCCTTTTGGGGATGTCCGGCTACCACCTCCAGCTGACTATAATAAGGAGATCACA
 GAAGGGGATGAAGTGGAGGTTTATTCTCGAGCCAATGAACAGGAACCTTGTGGCTGGTGGCTGGCCCGGG
 TGCGGATGATGAAGGAGATTTCTATGTCATTGAATATGCTGCCTGTGATGCCACCTACAATGAAATTGT
 TACCCTGGAGCGACTTCGGCCAGTTAATCCCAATCCCCTTGAACCAAAGGCAGCTTCTTCAAGTTACC
 ATGGCTGTGCCGAGGATCTGAGAGAAGCTGCTCCAATGAAAACGTCCATAAAGAGTTCAAGAAAGCCC
 TGGGAGCCAACCTGCATCTTTCTCAACATCACAACAGTGAGCTTTCATTCTGTCAACCACAGAAGCCCC
 TGTGAAGCGAGCATCTCTGCTGGGTGATATGCATTTCCGAAGCCTGCGCACCAAACCTGCTACTTATGTCC
 CGCAATGAAGAAGCTACCAAGCACCTAGAGACAAGCAAGCAGTTGGCAGCAGCCTTCCAAGAGGAGTTCA
 CAGTGCGAGAGGACCTGATGGGACTGGCAATTGGGACTCACGGTGCCAACATCCAGCAGGCCCCGAAAAGT
 ACCTGGGGTGACCGCATTGAGTTGGGTGAAGAGACCTGCACTTCCGCATCTATGGGGAGACTCCCGAG
 GCTTGCCGACAGGCCCAAGCTACCTTGAGTTTCTGAGGACTCAGTGCAAGTGCCAGGAACCTGGTTG
 GCAAAGTGATTGGAAAGAACGGGAAAGTGATCCAGGAGATTGTGGATAAATCTGGTGTGGTGAGGGTTG
 AGTGGAAGGTGATAATGACAAGAAGAACCCAGGGAGGAGGAATGGTTCCCTTCATTTTTGTTGGCACC
 CGAGAGAACATCAGCAATGCCAGGCTTTGCTGGAGTATCACCTCTCCTACCTGCAGGAGGTAGAGCAGC
 TTCGCTTGGAGAGGCTACAAATTGATGAGCAGCTTCGGCAGATTGGCTGGGCTTTCGCCCTCTGGGAG
 TGGGCGGGGCAGCGGTGGCAGCGACAAGGCTGGATATAGCACTGATGAGAGCTCCTCCTCCTCCCTCCAT
 GCGACTCGAACCTATGGGGGAGCTATGGGGGCCGTGGCCGTGGCCGGAGGACAGGCGGTCTGCCTATG
 GCCCAGCTCAGATGTGTCTACAGCTTACAGACTGAGTCAGAGAAGAGAGAGGAGCCCAACCGAGCTGG
 GCCTGGGACAGGGATCCCCCAACCCGAGGGGAAGAAAGCCGGAGGCGGCCGACTGGGGGCCGGGTAGG
 GGACCCCACTGCCCCCGGCCACTTCGAGATAACAATTCTTCATCTATTAGCTCAGTGTGAAGGATC
 CAGACAGTAATCCCTACAGCCTATTGGACAGTCTGAACCAGAGCCCCCGGTTGATTCAGAACCTGGGGA
 ACCCCCCCAGCAAGTGCAGGCGCCGCGCTCCCGCCGCGCCGCACTGATGAAGACAGGACCGTCATG
 GATGGAGGCTGGAATCAGATGGGCCAACATGACAGAGAATGGCTGGAAGATGAATCAAGACCTCAAC
 GTCGTAATCGCAGCCGCCGCGGTAACCGTGGTAATCGGACTGATGGCTCTATCAGTGGAGACGCCCA
 GCCAGTACTGTGGCTGACTATATCTCACGAGCAGAGTCTCAGAGCCGCCAGAGGCCACCCTGGAACGC
 ACTAAACCCTCAGAAGACTCTCTTTCAGGACAGAAGGGTGACTCTGTCAGCAAGCTTCTAAGGGCCCT
 CGGAGAATGGGGAGCTCTCCGCCCTTGGAGTTGGGTAGTATGGTGAATGGGGTTTCA

ACGCGTACGCGGGCCGCTCGAG - GFP Tag - GTTTAA

Protein Sequence: >RG209546 representing NM_004860
Red=Cloning site Green=Tags(s)

```

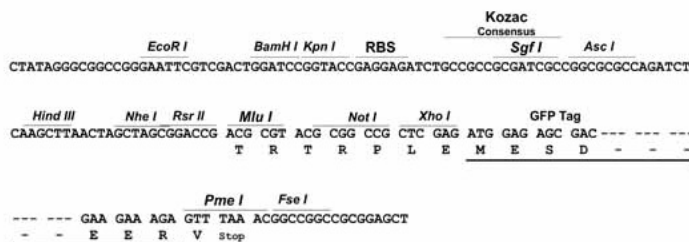
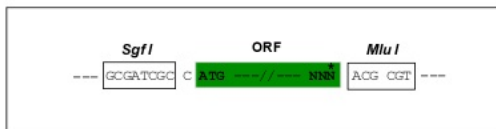
MGGLASGGDVEPGLPVEVVRGNSGAFYKGFVKDVHEDSVTIFFENNWQSERQIPFGDVRLPPPADYNKEIT
EGDEVEVYSRANEQEPGWWLARVRMMKGDFFYIEYAACDATYNEIVTLERLRPNPNPLATKGSFFKVT
MAVPEDLREACSNENVHKEFKKALGANCIFLNITNSELFILSTTEAPVKRASLLGDMHFRSLRKLKLLMS
RNEEATKHLETSKQLAAAFQEEFTVREDLMGLAIGTHGANIQQARKVPGVTAIELGEETCTFRIYGETPE
ACRQARSYLEFSEDSVQVPRNLVGKVIKNGKVIQEIYDKSGVVRVVEGDNDKKNPREEGMVPFIFVGT
RENISNAQALLEYHLSYLQEVQLRLRLRQIDEQLRQIGLGRPPGSGRSGSGSDKAGYSTDESSSSSLH
ATRITYGGSYGGRGRRTGGPAYGPSSDVSTASETESEKREEPNRAGPGDRDPPTRGEESRRRPTGGRGR
GPPAPRPTSRYNSSSISSVLKDPDSNPYSLLDTSEPEPPVDSEPPASARRRRRRTDDETRTM
DGGLESDGPNMTEGLEDESRPQRNRNRNRNRNRNRNRNRNRNRNRNRNRNRNRNRNRNRNRNRNRNRNR
TKPSEDSLGGQKGDVSKLPGPSENGELSAPELGSVMNGVS
    
```

TRTRPLE - GFP Tag - V

Restriction Sites: SgfI-MluI

Cloning Scheme:

Cloning sites used for ORF Shuttling:



ACCN: NM_004860

ORF Size: 2019 bp

OTI Disclaimer: The molecular sequence of this clone aligns with the gene accession number as a point of reference only. However, individual transcript sequences of the same gene can differ through naturally occurring variations (e.g. polymorphisms), each with its own valid existence. This clone is substantially in agreement with the reference, but a complete review of all prevailing variants is recommended prior to use. [More info](#)

OTI Annotation: This clone was engineered to express the complete ORF with an expression tag. Expression varies depending on the nature of the gene.

Components: The ORF clone is ion-exchange column purified and shipped in a 2D barcoded Matrix tube containing 10ug of transfection-ready, dried plasmid DNA (reconstitute with 100 ul of water).

Reconstitution Method:

1. Centrifuge at 5,000xg for 5min.
2. Carefully open the tube and add 100ul of sterile water to dissolve the DNA.
3. Close the tube and incubate for 10 minutes at room temperature.
4. Briefly vortex the tube and then do a quick spin (less than 5000xg) to concentrate the liquid at the bottom.
5. Store the suspended plasmid at -20°C. The DNA is stable for at least one year from date of shipping when stored at -20°C.

RefSeq: [NM_004860.4](#)

RefSeq Size: 2895 bp

RefSeq ORF: 2022 bp

Locus ID: 9513

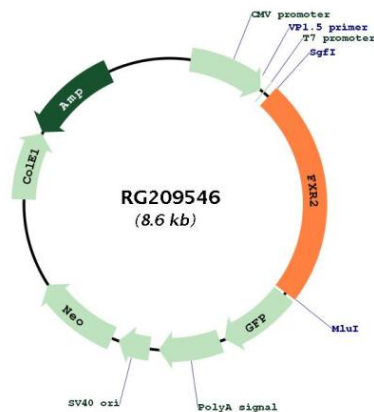
UniProt ID: [P51116](#)

Cytogenetics: 17p13.1

Domains: KH

Gene Summary: The protein encoded by this gene is a RNA binding protein containing two KH domains and one RCG box, which is similar to FMRP and FXR1. It associates with polyribosomes, predominantly with 60S large ribosomal subunits. This encoded protein may self-associate or interact with FMRP and FXR1. It may have a role in the development of fragile X cognitive disability syndrome. [provided by RefSeq, Jul 2008]

Product images:



Circular map for RG209546