

Product datasheet for **RG209542**

CD24 (NM_013230) Human Tagged ORF Clone

Product data:

Product Type: Expression Plasmids
Product Name: CD24 (NM_013230) Human Tagged ORF Clone
Tag: TurboGFP
Symbol: CD24
Synonyms: CD24A
Mammalian Cell Selection: Neomycin
Vector: pCMV6-AC-GFP (PS100010)
E. coli Selection: Ampicillin (100 ug/mL)
ORF Nucleotide Sequence: >RG209542 representing NM_013230
 Red=Cloning site Blue=ORF Green=Tags(s)

TTTTGTAAATACGACTCACTATAGGGCGGCCGGAATTCGTCGACTGGATCCGGTACCGAGGAGATCTGCC
 GCC**CGATCGCC**

ATGGGCAGAGCAATGGTGGCCAGGCTCGGGCTGGGGCTGCTGCTGCTGGCACTGCTCCTACCCACGCAGA
 TTTATTCCAGTGAAACAACAACCTGGAACCTCAAGTAACCTCCAGAGTACTTCCAACCTCTGGGTTGGC
 CCCAAATCCAATAATGCCACCACCAAGCGGCTGGTGGTGGCCCTGCAGTCAACAGCCAGTCTCTTCGTG
 GTCTCACTCTCTTCTGCATCTCTACTCT

ACGCGTACGCGGCCGCTCGAG - GFP Tag - GTTTAA

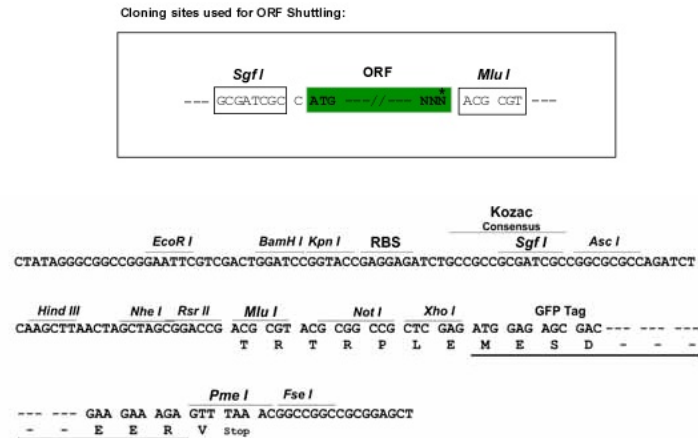
Protein Sequence: >RG209542 representing NM_013230
 Red=Cloning site Green=Tags(s)
 MGRAMVARLGLLLLLALLLPTQIYSSETTTGTSSNSSQSTSNSGLAPNPTNATTKAAGGALQSTASLFV
 VSLSLHLHLYS

TRTRPLE - GFP Tag - V

Restriction Sites: SgfI-MluI


[View online »](#)

Cloning Scheme:



ACCN: NM_013230

ORF Size: 240 bp

OTI Disclaimer: The molecular sequence of this clone aligns with the gene accession number as a point of reference only. However, individual transcript sequences of the same gene can differ through naturally occurring variations (e.g. polymorphisms), each with its own valid existence. This clone is substantially in agreement with the reference, but a complete review of all prevailing variants is recommended prior to use. [More info](#)

OTI Annotation: This clone was engineered to express the complete ORF with an expression tag. Expression varies depending on the nature of the gene.

Components: The ORF clone is ion-exchange column purified and shipped in a 2D barcoded Matrix tube containing 10ug of transfection-ready, dried plasmid DNA (reconstitute with 100 ul of water).

Reconstitution Method:

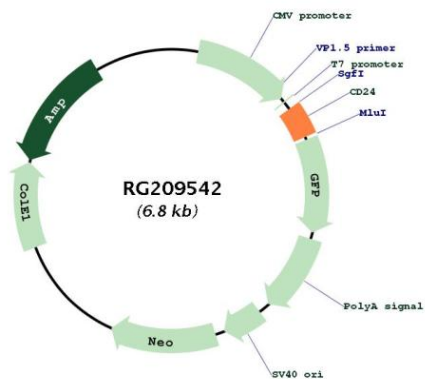
1. Centrifuge at 5,000xg for 5min.
2. Carefully open the tube and add 100ul of sterile water to dissolve the DNA.
3. Close the tube and incubate for 10 minutes at room temperature.
4. Briefly vortex the tube and then do a quick spin (less than 5000xg) to concentrate the liquid at the bottom.
5. Store the suspended plasmid at -20°C. The DNA is stable for at least one year from date of shipping when stored at -20°C.

Note: Plasmids are not sterile. For experiments where strict sterility is required, filtration with 0.22um filter is required.

RefSeq: [NM_013230.3](#)
 RefSeq Size: 2194 bp
 RefSeq ORF: 243 bp
 Locus ID: 100133941
 UniProt ID: [P25063](#)
 Cytogenetics: 6q21

Gene Summary: This gene encodes a sialoglycoprotein that is expressed on mature granulocytes and B cells and modulates growth and differentiation signals to these cells. The precursor protein is cleaved to a short 32 amino acid mature peptide which is anchored via a glycosyl phosphatidylinositol (GPI) link to the cell surface. This gene was missing from previous genome assemblies, but is properly located on chromosome 6. Non-transcribed pseudogenes have been designated on chromosomes 1, 15, 20, and Y. Alternative splicing results in multiple transcript variants. [provided by RefSeq, Apr 2014]

Product images:



Circular map for RG209542