

Product datasheet for **RG209529**

WWP2 (NM_199424) Human Tagged ORF Clone

Product data:

Product Type:	Expression Plasmids
Product Name:	WWP2 (NM_199424) Human Tagged ORF Clone
Tag:	TurboGFP
Symbol:	WWP2
Synonyms:	AIP2; WWp2-like
Mammalian Cell Selection:	Neomycin
Vector:	pCMV6-AC-GFP (PS100010)
E. coli Selection:	Ampicillin (100 ug/mL)



[View online »](#)

**ORF Nucleotide
Sequence:**

>RG209529 representing NM_199424
 Red=Cloning site Blue=ORF Green=Tags(s)

TTTTGTAATACGACTCACTATAGGGCGGCCGGGAATTCGTCGACTGGATCCGGTACCGAGGAGATCTGCC
 GCC**CGCATCGCC**

ATGGCATCTGCCAGCTCTAGCCGGCAGGAGTGGCCCTGCCTTTTGAGAAGTCTCAGCTCACTTTGAAAG
 TGGTGTCCGCAAAGCCCAAGGTGATAATCGTCAACCTCGAATTAACCTACGTGGAGGTGGCGGTGGA
 TGGACTCCCCAGTGAGACCAAGAAGACTGGGAAGCGCATTGGGAGCTCTGAGCTTCTCTGGAATGAGATC
 ATCATTTTGAATGTCACGGCACAGAGTCATTTAGATTTAAAGGTCTGGAGCTGCCATACCTTGAGAAATG
 AACTGCTAGGCACCGCATCTGTCAACCTCTCCAACGTCTTGAAGAACAATGGGGGCAAAATGGAGAACAT
 GCAGCTGACCCTGAACCTGCAGACGGAGAACAAGGCAGCGTTGTCTCAGGCGGAGAGCTGACAATTTTC
 CTGGACGGGCCAACTGTTGATCTGGGAAATGTGCCTAATGGCAGTGCCCTGACAGATGGATCACAGCTGC
 CTTGAGAGACTCCAGTGAACAGCAGTAGCTCCAGAGAACCAGCCAGCCCCAGCACAACTGCTT
 TGGTGGAAAGATCCCGGACGCACAGACATTCGGGTGCTTCAGCCAGAACAACCCAGCAACCGGCGAGCAA
 AGCCCCGGTGTCTCGGAGCCGGCACCGCCAGCCCGTCAAGAACTCAGGCCACAGTGCTTGGCCAATGGCA
 CAGTGAATGATGAACCCACAACAGCCACTGATCCCGAAGAACCTTCCGTTGTTGGTGTGACGTCCCCACC
 TGCTGCACCCTTGAGTGTGACCCCGAATCCCAACAGCACTTCTCTCCCTGCCACAGCCACCCGGCTGAA
 GGAGAGGAACCCAGCACTTCGGGTACACAGCAGCTCCCAGCGGTGCCAGGCCCGCCGACGCTCTGCCTG
 CTGGATGGGAACAGCGAGAGCTGCCCAACGGACGTGTCTATTATGTTGACCACAATACCAAGACCACCAC
 CTGGGAGCGGCCCTTCTCCAGGCTGGGAAAAACGCACAGATCCCCGAGGCAGGTTTTACTATGTGGAT
 CACAATACTCGGACCACCCTGGCAGCGTCCGACCGGAGTACGTGCGCAACTATGAGCAGTGGCAGT
 CGCAGCGGAATCAGCTCCAGGGGCCATGCAGCACTTCAGCCAAAGATTCTCTACCAGTCTTCGAGTGC
 TTCGACTGACCATGATCCCTGGGCCCTCCCTCCTGGCTGGGAGAAAAGACAGGACAATGGACGGGTG
 TATTACGTGAACCATAACACTCGCACGACCCAGTGGGAGGATCCCGGACCCAGGGGATGATCCAGGAAC
 CAGCTCTGCCCCAGGATGGGAGATGAAATACACCAGCGAGGGGGTGCATACTTTGTGGACCACAATAC
 CCGCACCACCACCTTTAAGGATCCTCGCCGGGTTTGTGAGTGGGGACGAAGCAAGGTTCCCTGTTGCT
 TATGACCCGAGTTTTCGGTGGAAGTATCACCAGTTCGTTTCTCTGCCATTCAAATGCCCTACCTAGCC
 ACGTGAAGATCAGCGTTTCCAGGCAGACGCTTTTCAAGATTCTTCCAACAGATCATGAACATGAAACC
 CTATGACCTGCGCCGCCGCTCTACATCATCATGCGTGGCGAGGAGGGCCTGGACTATGGGGGCATCGCC
 AGAGAGTGGTTTTCTCTGTCTCACGAGGTGCTCAACCCTATGTATTGTTTATTTGAATATGCCGGAA
 AGAACAATTACTGCCTGCAGATCAACCCCGCTCCTCCATCAACCCGGACCACCTCACCTACTTTGCTT
 TATAGGCAGATTCATCGCCATGGCGCTGTACCATGGAAAGTTCATCGACACGGGCTTACCCCTCCCTTTC
 TACAAGCGGATGCTCAATAAGAGACCAACCCTGAAAGACCTGGAGTCCATTGACCCTGAGTTCTACAAC
 CCATTGTCTGGATCAAAGAGAACAACCTGGAAGAATGTGGCTGGAGCTGTACTTCATCCAGGACATGGA
 GATACTGGGAAGGTGACGACCCACGAGCTGAAGGAGGGCGGCGAGAGCATCCGGGTACCGGAGGAGAAC
 AAGGAAGAGTACATCATGCTGCTGACTGACTGGCGTTTACCCGAGGCGTGAAGAGCAGACCAAGCCT
 TCCTGGATGGCTTCAACGAGGTGGCCCCGCTGGAGTGGCTGCGCTACTTTGACGAGAAAGAGCTGGAGCT
 GATGCTGTGCGGCATGCAGGAGATAGACATGAGCGACTGGCAGAAGAGCACCATCTACCGCACTACACC
 AAGAACAGCAAGCAGATCCAGTGGTTCTGGCAGTGGTGAAGGAGATGGACAACGAGAAGAGGATCCGGC
 TGCTGCAGTTTGTACCCGTACCTGCCGCTGCCGTCGGGGATTGCGCAACTCATCGGTAGCAACGG
 ACCACAGAAGTTTTGCATTGACAAAGTTGGCAAGGAAACCTGGCTGCCAGAAGCCACACCTGCTTCAAC
 CGTCTGGATCTTCCACCCTACAAGAGCTACGAACAGCTGAGAGAGAAGCTGCTGTATGCCATTGAGGAGA
 CCGAAGGCTTTGGACAGGAG

ACGCGTACGCGGCCGCTCGAG - GFP Tag - GTTTAA

Protein Sequence: >RG209529 representing NM_199424
 Red=Cloning site Green=Tags(s)

MASASSSRAGVALPFEKSQLTLKVVSAKPKVHNRQPRINSYVEVAVDGLPSETKKTGKRIGSELLWNEI
 IILNVTAQSHLDLKVWSCHTLRNELLGTASVNL SNVLKNNGGKMEMNQLTLNLQ TENKGSVVSGGELTIF
 LDGPTVDLGNVPNGSAL TDGSQ LPSRDSSGTAVAPENRHQPPSTNCFGGRSRTHRHSGASARTTPATGEQ
 SPGARSRHRQPVKNSGHSGLANGTVNDEPTTATDPEEPSVVGVTSPPAAPLSVTPNPNTTSLPAPATPAE
 GEEPSTSGTQQLPAAAQAPDALPAGWEQREL PNGRVYYVDHNTKTTTWERPLPPGW EKRTDPRGRFYVD
 HNTRTTTWRPTAEYVRNYEQWQSQRNQLQGAMQHFSQRFLYQSSSASTDHDPLGPLPPGW EKRDNGRV
 YYVNHNTRTTQWEDPRTQGMIEPALPPGWEMKYTSEGVRYFVDHNTRTTTFKDP RP GFESGTKQGSPGA
 YDRSFRWKYHQFRFLCHSNALPSHVKISVSRQTLFEDSFQQIMNMKPYDLRRRLYIIMRGE EGLDYGGIA
 REWFFLLSHEVLNPMYCLFEYAGKNNYCLQINPASSINPDHLYFRFIGRFIAMALYHGKFI DTGFTLPF
 YKRLNKRPTLKDLESIDPEFYNSIVWIKENNEECGLELYFIQDMEILGKVTTHELKEGGESIRVTEEN
 KEEYIMLLTDWRFTRGVEEQTKAFLDGFNEVAPLEWLR YFDEKELEMLCGMQEIDMSD WQKSTIYRHYT
 KNSKQIQWFVQVKEMDNEKRIRLLQFVTGT CRLPVGGFAELIGSNGPQKFCIDKVGKETWLP RSHTCFN
 RLDLPPYKSYEQLREKLLYAIEETEFGGQE

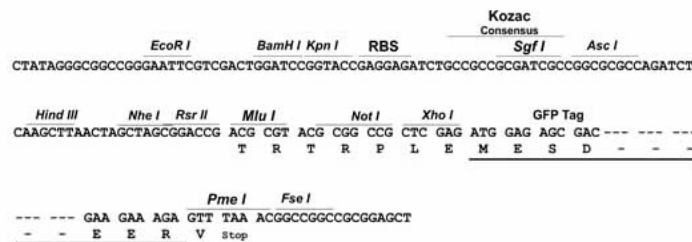
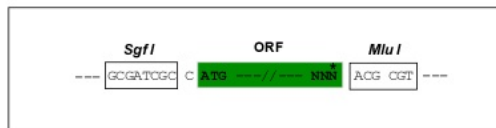
TRTRPLE - GFP Tag - V

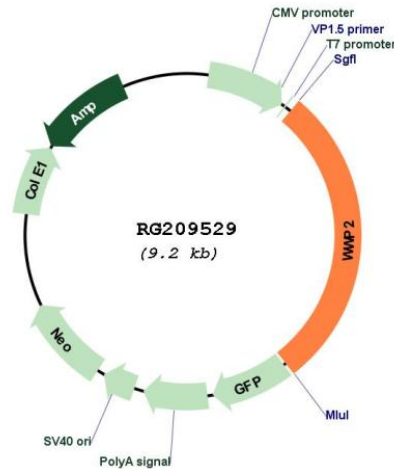
Restriction Sites:

SgfI-MluI

Cloning Scheme:

Cloning sites used for ORF Shuttling:



Plasmid Map:


ACCN: NM_199424

ORF Size: 1293 bp

OTI Disclaimer: The molecular sequence of this clone aligns with the gene accession number as a point of reference only. However, individual transcript sequences of the same gene can differ through naturally occurring variations (e.g. polymorphisms), each with its own valid existence. This clone is substantially in agreement with the reference, but a complete review of all prevailing variants is recommended prior to use. [More info](#)

OTI Annotation: This clone was engineered to express the complete ORF with an expression tag. Expression varies depending on the nature of the gene.

Components: The ORF clone is ion-exchange column purified and shipped in a 2D barcoded Matrix tube containing 10ug of transfection-ready, dried plasmid DNA (reconstitute with 100 ul of water).

Reconstitution Method:

1. Centrifuge at 5,000xg for 5min.
2. Carefully open the tube and add 100ul of sterile water to dissolve the DNA.
3. Close the tube and incubate for 10 minutes at room temperature.
4. Briefly vortex the tube and then do a quick spin (less than 5000xg) to concentrate the liquid at the bottom.
5. Store the suspended plasmid at -20°C. The DNA is stable for at least one year from date of shipping when stored at -20°C.

RefSeq: [NM_199424.1](#), [NP_955456.1](#)

RefSeq Size: 3690 bp

RefSeq ORF: 1296 bp

Locus ID: 11060

UniProt ID: [O00308](#)

Cytogenetics: 16q22.1

Protein Families: Druggable Genome

Protein Pathways: Ubiquitin mediated proteolysis

Gene Summary: This gene encodes a member of the Nedd4 family of E3 ligases, which play an important role in protein ubiquitination. The encoded protein contains four WW domains and may play a role in multiple processes including chondrogenesis and the regulation of oncogenic signaling pathways via interactions with Smad proteins and the tumor suppressor PTEN. Alternatively spliced transcript variants encoding multiple isoforms have been observed for this gene, and a pseudogene of this gene is located on the long arm of chromosome 10. [provided by RefSeq, Jul 2012]