

Product datasheet for **RG209524**

C14orf106 (MIS18BP1) (NM_018353) Human Tagged ORF Clone

Product data:

Product Type:	Expression Plasmids
Product Name:	C14orf106 (MIS18BP1) (NM_018353) Human Tagged ORF Clone
Tag:	TurboGFP
Symbol:	MIS18BP1
Synonyms:	C14orf106; HSA242977; KNL2; M18BP1
Mammalian Cell Selection:	Neomycin
Vector:	pCMV6-AC-GFP (PS100010)
E. coli Selection:	Ampicillin (100 ug/mL)
ORF Nucleotide Sequence:	>RG209524 representing NM_018353 Red=Cloning site Blue=ORF Green=Tags(s)

TTTTGTAATACGACTCACTATAGGGCGGCCGGAATTCGTCGACTGGATCCGGTACCGAGGAGATCTGCC
GCC**CGATCGCC**

ATGATTGCAACACCTTTGAAACATTCAAGAATTTACTTACCTCCAGAGGCATCTTCTCAAAGGAGAAATC
TACCCATGGATGCAATCTTTTTGACAGCATTCTTCAGGCACACTTACTCCTGTAAAAGATTTGGTGAA
ATATCAGAACTCCTCCTTAAAAATGAATGACCATAAAAAGAATCAGTTCCTAAAAATGACAACTTTTAAAC
AATAAAAAATATTTCAATCAACTATGCTAACAGAGGCTACTACCTCTAACAGTTCTCTTGATATCAGTG
CTATAAAGCCCAACAAGGATGGATTAATAAATAAAGCAAATATGAATCACCAGGAAAAATTTTCTAAG
AATGAAAGAAAAAGTACTGCGTGACAAGCAAGAACAGCCATCAAGAAACAGTAGTTTGTGGAAACCACAG
AAAAGTGAAATAATGAAACCTTCACTCCTAACAGAGTTGAAAAAAAAAATTGCAGCATACCTACCTAT
GTGAAGAAAAGGAAAACAACAAATCATTCCAGTCAGATGACAGTTCACTAAGAGCCTCAGTCCAAGGAGT
TCCTCTAGAATCATCAAATAATGATATTTCTCCCGGTCAAACAAAAGATTCAGTGCCAGCAGGAAAAAG
AAAGCACCCTGCACAATTTAATTACGAACTTCCAACCTGAACCAAGAACAGGAAAAATTTTTGGCTG
TAGAAGCCCGAAACAAGACATTAAGTACGAGCTCAGTTGGCTAAACAAATTTTCACTCAAAGGAGAGTAT
AGTTGCAACCACTAAATCCAAAAAGGACACGTTTGTGTTTAGAAAGCGTTGATTCTGCTGATGAACAATTT
CAAAATACTAATGCTGAGACTCTCAGTACTAATTGATTTCTTAAATAAATGTCAGCCTGTTAATGGTTT
CTGATAGTGAGAGGACAACAGAAGGACTTCGCAACAGAAAGTTAAGGAAGGAAATGGAAAAACAGTGCC
TGGAGAGACAGGCTTCCAGGTTCCATGAAAGATACATGTAATAATGTACTTGCAACACCAAGACTTCAT
ATAACAATACCTCGGAGGTCAAAGAAATATTTCAAAGCTTTCTCCTCCAAGAATTTTCAAAGCTGTTA
CAAATGGACTTAAAAAAATCAGGTAGTTCAGCTACAGGAATGGATGATTAAGCATCAATAATAATAC
TGCTATATGTGTAGAAGGAAATTTGATAGACGTCCTAACATATATTGGCACAGTAATGTAATTATAGAG
CGGATTGAGCACAACAACTTAGGACTATATCAGGCAACGTTTATATATTAAGGCATGATAGACCAAA
TTCCATGAAAGAAGCAGGATATCCAAATATCTCATAAGGAAATTTATGTTGGATTTCCAGAAAATTG
GAAAGAGCACATTGATAATTTCTGGAACAATTAAGGGCTGGTAAAAGAACAGGAAAAGACCAACAA



[View online »](#)

AAACAGAAAACCTGGAAGATCTGTCCGTGACATAAGGAAATCAATGAAAAATGATGCACGAGAAAACCAAA
 CAGATACTGCTCAAAGAGCCACCACCCTTACGATTTTGATTGTGATAATTTGGAAGTGAAGAGTAATA
 GCACAGTGAGTACCAGGAGCTACAGAATTAACATGTGCCACAGTAATTGCCAAAATAAACCAACATTA
 AGGTTCCAGATGACCAAGTAAATAACTATTCAAAATGGAGGAGGAGATGACTTATCTAATCAGGAAT
 TAATTGAAAAAAGAATATAAAATGTCTTCAAAGAACTAAAAATGGTGAAGAACAATGAAAGGAT
 AATAAAAGTCAGAAGCAAGAGACAACCTGAAGAATTGGATGTATCCATTGATATTCTAACCTCAAGGGAA
 CAGTTTTTCTCAGATGAAGAAAGAAAATACATGGCCATCAATCAGAAGAAAGCTTATATTTTAGTAACAC
 CACTTAAATCTAGAAAAGTGATAGAGCAAAGATGCATGAGGTATAATCTGTCCGCTGGCACCATCAAAGC
 AGTAACAGATTTTGAATACCAGAGTGTCAAAAAAAGTCCCATCAGCAAGTCCATGGGGACTTTAGAA
 AATACATTTGAAGGTCATAAAAGTAAAAACAAGGAAGATTGCGATGAACGTGACTTACTTGTCAACC
 GGAAAAATAAAATATCTAACCTTAAAAGGAACAATGCTCACCTCTGACTTTAAGAAAAATACCAGACT
 ATTACCAAAATGAAGAAAATAGAAAATCAGGTAGCTATGTCATTTTATAAGCATCAGTCTCACCAGAT
 TTGTCAAGTGAAGAAAGTAAACAGAAAAGGAAATTAAGGAAAGCTGAAGTTAAGAAAACCAAGCAG
 GAAACACCAAGAAGCAGTGGTTCACCTGAGAAAGAGCACAAGAAACACAAGTAATTTCCAGTGATTTT
 GGAACCTGAAACTGAAGAAAGTAAAATGAATTTTATATCAAACAAAAGAAAGCTAGACCTCCGTCAAA
 GAAACTCTCAGAAGTCTGGTGTAGGAAAGAGTTTCCAATTACTGAGGCAGTAGGATCTGATAAGACAA
 ATAGGCATCCCTTAGAATGCTTACCTGGTTAATTCAGGATAAGGAATGGAATGAGAAGGAGTTACAGAA
 ACTTCATTGTGCTTTTGCATCTCTTCAAAGCACAAAACCTGGTTTCTGGTCAAGGATAGCTGCGGCTGTA
 GGTTCTCGATCTCCTGAAGAATGCCAGAGGAAATACATGGAAAATCCCAGAGGAAAAGGATCCCAGAAAC
 ATGTCCTAAGAAGAAGCCAGCAATTTCAAAGGCCAAAATGGCAAGAGAGGTGATGCTGATCAGAAACA
 AACTATTAAGATAACTGCCAAAGTGGAACTCTTAAAAGGAAGCAACAGATGAGGGAATTTCTGGAACAG
 TTGCCAAAAGATGACCATGATGATTTTTTTCAGTACAACACCTTTACAGCATCAAAGAATACTGTTGCCAA
 GTTTCCAGGACAGTGAAGATGATGATATTCTGCCAAAATGGACAAAATCCAACAACACTCCATCATC
 AGTTATCTTTCCATTGGTAAAAACTCCTCAATGTGAGCATGTGAGTCTGGCATGCTAGGTTCTATAAAT
 AGGAATGACTGTGATAAATATGTTTTTCGTATGCAAAAATATCATAAAAGTAATGGTGGTATTGTCTGGG
 GCAACATCAAGAAAAAATAGTTGAAACTGATTTCTCAACTCCAACACCAAGAAGAAAACCCCATTTAA
 CACAGACTTAGGAGAAAACCTGGTATTGGAAAACTTTTCACTAATGCTGTGGAATCTTTAGATGAAGAA
 GAGAAAGATTATTATTTTTCGAAGTCTGATTCTGCA

ACGCGTACGCGGCCGCTCGAG – GFP Tag – GTTTAA

Protein Sequence:

>RG209524 representing NM_018353
 Red=Cloning site Green=Tags(s)

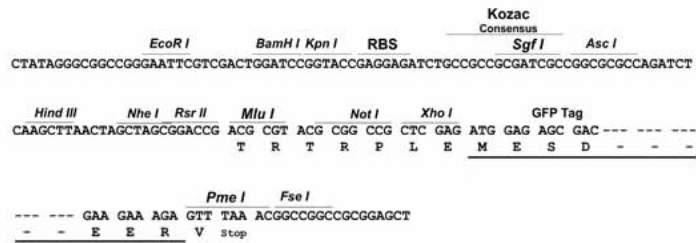
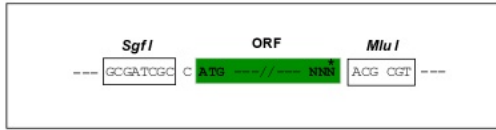
MIATPLKHSRIYLPPEASSQRRNLPMDAIFFDIPSGLTPVKDLVKYQNSSLKLNDHKKNQFLKMTTFN
 NKNIFQSTMLTEATTSNSSLDISAIKPNKDGLKNKANYESPGKIFLRMKEKVLDRDKQEQSPRNSLLEPQ
 KSGNNEFTPNRVEKKLQHTYLCEEKNNKSFQSDSSLRASVQGVPLESSNNDIFLPVKQKIQCQQEK
 KAPLHNLTYELPTLNQEQENFLAVEARNKTLTRAQLAKQIFHKSIESIVATTKSKKDTFVLESVSDAQF
 QNTNAETLSTNCIPIKNGSLLMVSDESERTTEGTSQQKVKENGKTVPGETGLPGSMKDTCKIVLATPRLH
 ITIPRRSKRNISKLSPPRIFQTYVTNGLKKNQVVQLQEWMIKSINNNTAICVEGKIDVNTIYWHNSNVIIE
 RIEHNKLRITISGNVYILKGMIDQISMKEAGYPNYLIRKFMFGFPENWKEHIDNFLEQLRAGEKNREKTKQ
 KQKTGRSVRDIRKSMKNDARENQTDQARATTTDFDCDNLLEKSNKHSESPGATELNMCHSNQNKPTL
 RFPDDQVNNTIQNGGGDDL SNQELIGKKEYKMSKLLKIGERTNERI IKSQKQETTEELDVSIDILTSRE
 QFFSDEERKYMAINQKKAYILVPLKSRKVEQRCMRYNL SAGTIKAVTDFVIPECQKKSPIKSMGTLE
 NTFEGHKSKNKEDCDERDLLTVNRKIKISNLEKEQMLTSDFKNTRLLPKLKKIENQVAMSFYKHQSSPD
 LSSESETEKEIKRKAEVKTKAGNTKEAVVHLRKRSTRNTSNIPVILEPETEESENEFYIKQKARPSVK
 ETLQKSGVRKEFPITEAVGSDKTNRHLECLPGLIQDKEWNEKELQKLHCAFASLPKHKPGFWSEVAAA
 GSRSPPECQRKYMENPRGKGSQKHVTKKPPANSKGQNGKRGDADQKQTIKITAQVGTLLKRRQMMREFLEQ
 LPKDDHDDFFSTPLQHQRILLPSFQDSEDDDDILPNMDKNPTTPSSVIFPLVKTPQCQHVSPGMLGSIN
 RNDCKDYVFRMQKYHKSNGGIVWGNIKKLVETDFSTPTPRRKTPTFNTDLGENSGIGKLFNAVESLDEE
 EKDYFFSNSDSA

TRTRPLE – GFP Tag – V

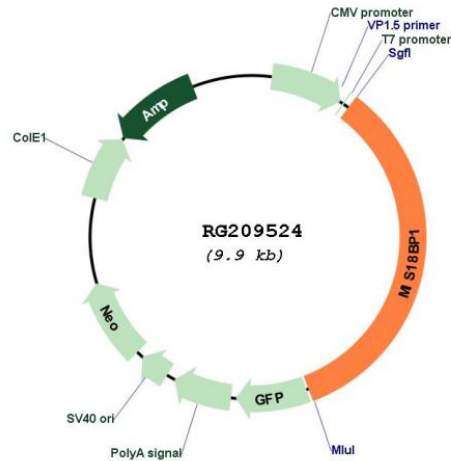
Restriction Sites: SgfI-MluI

Cloning Scheme:

Cloning sites used for ORF Shuttling:



Plasmid Map:



ACCN: NM_018353

ORF Size: 4789 bp

OTI Disclaimer: The molecular sequence of this clone aligns with the gene accession number as a point of reference only. However, individual transcript sequences of the same gene can differ through naturally occurring variations (e.g. polymorphisms), each with its own valid existence. This clone is substantially in agreement with the reference, but a complete review of all prevailing variants is recommended prior to use. [More info](#)

OTI Annotation: This clone was engineered to express the complete ORF with an expression tag. Expression varies depending on the nature of the gene.

Components: The ORF clone is ion-exchange column purified and shipped in a 2D barcoded Matrix tube containing 10ug of transfection-ready, dried plasmid DNA (reconstitute with 100 ul of water).

Reconstitution Method:

1. Centrifuge at 5,000xg for 5min.
2. Carefully open the tube and add 100ul of sterile water to dissolve the DNA.
3. Close the tube and incubate for 10 minutes at room temperature.
4. Briefly vortex the tube and then do a quick spin (less than 5000xg) to concentrate the liquid at the bottom.
5. Store the suspended plasmid at -20°C. The DNA is stable for at least one year from date of shipping when stored at -20°C.

RefSeq: [NM_018353.5](#)

RefSeq Size: 4584 bp

RefSeq ORF: 3399 bp

Locus ID: 55320

UniProt ID: [Q6P0N0](#)

Cytogenetics: 14q21.2

Protein Families: Transcription Factors

Gene Summary: Required for recruitment of CENPA to centromeres and normal chromosome segregation during mitosis.[UniProtKB/Swiss-Prot Function]