

## Product datasheet for **RG209511**

### **RAB22A (NM\_020673) Human Tagged ORF Clone**

#### Product data:

**Product Type:** Expression Plasmids  
**Product Name:** RAB22A (NM\_020673) Human Tagged ORF Clone  
**Tag:** TurboGFP  
**Symbol:** RAB22A  
**Mammalian Cell Selection:** Neomycin  
**Vector:** pCMV6-AC-GFP (PS100010)  
**E. coli Selection:** Ampicillin (100 ug/mL)  
**ORF Nucleotide Sequence:** >RG209511 representing NM\_020673  
**Red**=Cloning site **Blue**=ORF **Green**=Tags(s)

TTTTGTAATACGACTCACTATAGGGCGGCCGGAATTCGTCGACTGGATCCGGTACCGAGGAGATCTGCC  
GCC**CGATCGCC**

ATGGCGCTGAGGGAGCTCAAAGTGTGTCTGCTCGGGGATACAGGTGTAGGTAATCGAGTATTGTGTGGC  
GGTTTGTGGAAGACAGTTTTGATCCAAACATCAACCAACAATAGGGGCATCTTTTATGACCAAGACTGT  
CCAGTACCAAAATGAGCTACATAAATTCCTAATCTGGGATACAGCTGGACAAGAACGATTTTCGTGCCTTA  
GCACCAATGTACTATCGAGGGTGGCTGCAGCTATAATCGTTTATGATATCACAAAAGAAGACATTTT  
CAACATTAAGAATTGGGTGAAAGAGCTTCGACAGCATGGCCACCTAATATTGTAGTTGCCATTGCAGG  
AAATAAATGTGATCTTATCGATGTAAGAGAAGTCATGGAGAGAGATGCAAAGGACTACGCCGACTCTATT  
CATGCAATTTTTGTAGAGACCAGCGCAAAAAACGCGATAAACATAAATGAACTCTTTATAGAAATTAGTC  
GAAGAATTCATCCACTGACGCCAACCTGCCATCTGGCGTAAGGGCTTCAAACCTCCGAGACAGCCTTC  
AGAGCCAAAGCGGAGCTGCTGC

**ACGCGTACGCGGCCGCTCGAG** - GFP Tag - GTTTAA

**Protein Sequence:** >RG209511 representing NM\_020673  
**Red**=Cloning site **Green**=Tags(s)

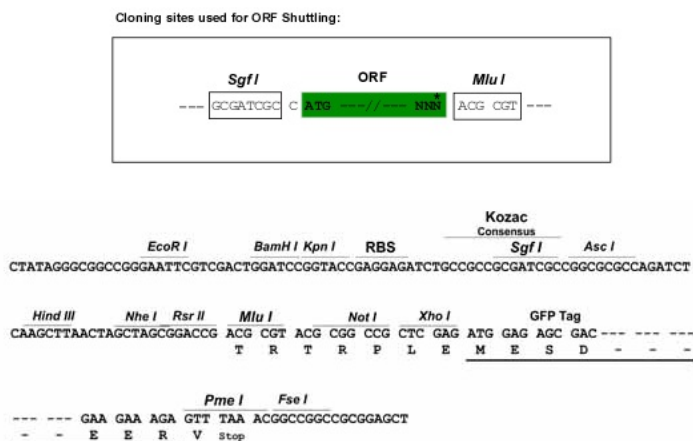
MALRELKVCLLGDTGVGKSSIVWRFVEDSFDPNINPTIGASFMTKTVQYQNELHKFLIWDTAGQERFRAL  
APMYRGSAAAIIVYDITKEETFSTLKNWVKELRQHGPPIVVAIAGNKCDLIDVREVMERDAKDYADSI  
HAIFVETSAKNAINELFIEISRRIPSTDANLPSGGKGFKLRRQPSEPKRSCC

**TRTRPLE** - GFP Tag - V

**Restriction Sites:** Sgfl-MluI



[View online »](#)

**Cloning Scheme:**


**ACCN:** NM\_020673

**ORF Size:** 582 bp

**OTI Disclaimer:** The molecular sequence of this clone aligns with the gene accession number as a point of reference only. However, individual transcript sequences of the same gene can differ through naturally occurring variations (e.g. polymorphisms), each with its own valid existence. This clone is substantially in agreement with the reference, but a complete review of all prevailing variants is recommended prior to use. [More info](#)

**OTI Annotation:** This clone was engineered to express the complete ORF with an expression tag. Expression varies depending on the nature of the gene.

**Components:** The ORF clone is ion-exchange column purified and shipped in a 2D barcoded Matrix tube containing 10ug of transfection-ready, dried plasmid DNA (reconstitute with 100 ul of water).

**Reconstitution Method:**

1. Centrifuge at 5,000xg for 5min.
2. Carefully open the tube and add 100ul of sterile water to dissolve the DNA.
3. Close the tube and incubate for 10 minutes at room temperature.
4. Briefly vortex the tube and then do a quick spin (less than 5000xg) to concentrate the liquid at the bottom.
5. Store the suspended plasmid at -20°C. The DNA is stable for at least one year from date of shipping when stored at -20°C.

**RefSeq:** [NM\\_020673.3](#)

**RefSeq Size:** 8702 bp

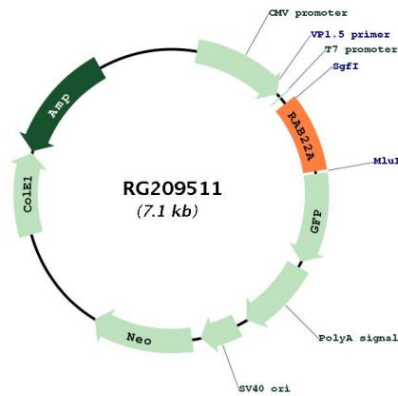
**RefSeq ORF:** 585 bp

**Locus ID:** 57403

**UniProt ID:** [Q9UL26](#)

**Cytogenetics:** 20q13.32  
**Domains:** ras, RAN, RAS, RHO, RAB  
**Protein Families:** Druggable Genome  
  
**Protein Pathways:** Endocytosis  
**Gene Summary:** The protein encoded by this gene is a member of the RAB family of small GTPases. The GTP-bound form of the encoded protein has been shown to interact with early-endosomal antigen 1, and may be involved in the trafficking of and interaction between endosomal compartments. [provided by RefSeq, Jul 2008]

**Product images:**



Circular map for RG209511