

Product datasheet for **RG209508**

TINAGL1 (NM_022164) Human Tagged ORF Clone

Product data:

Product Type:	Expression Plasmids
Product Name:	TINAGL1 (NM_022164) Human Tagged ORF Clone
Tag:	TurboGFP
Symbol:	TINAGL1
Synonyms:	ARG1; LCN7; LIECG3; TINAGRP
Mammalian Cell Selection:	Neomycin
Vector:	pCMV6-AC-GFP (PS100010)
E. coli Selection:	Ampicillin (100 ug/mL)



[View online »](#)

ORF Nucleotide Sequence:

>RG209508 representing NM_022164
 Red=Cloning site Blue=ORF Green=Tags(s)

TTTTGTAATACGACTCACTATAGGGCGGCCGGGAATTCGTCGACTGGATCCGGTACCGAGGAGATCTGCC
 GCC**CGGATCGCC**

ATGTGGCGATGTCCACTGGGGCTACTGCTGTTGCTGCCGCTGGCTGGCCACTTGGCTCTGGGTGCCCAGC
 AGGGTCGTGGGCGCCGGGAGCTAGCACCGGGTCTGCACCTGCGGGGCATCCGGGACGCGGGAGGCCGGTA
 CTGCCAGGAGCAGGACCTGTGCTGCCGCGGCCGTGCCGACGACTGTGCCCTGCCCTACCTGGGCGCCATC
 TGTTACTGTGACCTTTCTGCAACCGCACGGTCTCCGACTGCTGCCCTGACTTCTGGGACTTCTGCCTCG
 GCGTGCCACCCCTTTTCCCGCATCCAAGGATGTATGCATGGAGGTCGTATCTATCCAGCTTTGGGAAC
 GTACTGGGACAACTGTAACCGTTGCACCTGCCAGGAGAACAGGCAGTGGCAGTGTACCAAGAACCATGC
 CTGGTGGATCCAGACATGATCAAAGCCATCAACCAGGGCAACTATGGCTGGCAGGCTGGGAACCACAGCG
 CCTTCTGGGGCATGACCCTGGATGAGGGCATTGCTACCGCTGGGCACCATCCGCCATCTTCTCGGT
 CATGAACATGCATGAAATTTATACAGTGTGAACCCAGGGGAGGTGCTTCCACAGCCTTCGAGGCTCT
 GAGAAGTGGCCCAACCTGATTATGAGCCTCTTGACCAAGGCAACTGTGCAGGCTCTGGGCCTTCTCCA
 CAGCAGCTGTGGCATCCGATCGTGTCTCAATCCATTCTCTGGGACACATGACGCCTGTCTGTGCCCCCA
 GAACCTGCTGTCTGTGACACCCACCAGCAGCAGGGCTGCCGCGGTGGGCGTCTCGATGGTGCCTGGTGG
 TTCTCGCTCGCCGAGGGGTGGTGTCTGACCACTGCTACCCCTTCTCGGGCCGTGAACGAGACGAGGCTG
 GCCCTGCGCCCCCTGTATGATGCACAGCCGAGCCATGGGTGGGGCAAGCGCCAGGCCACTGCCCACTG
 CCCAACAGCTATGTTAATAACAATGACATCTACCAGTCACTCCTGTCTACCGCTCGGCTCCAACGAC
 AAGGAGATCATGAAGGAGCTGATGGAGAATGGCCCTGTCCAAGCCCTCATGGAGGTGCATGAGGACTTCT
 TCCTATACAAGGGAGGCATCTACAGCCACAGCCAGTGAAGCCTTGGGAGGCCAGAGAGATACCGCCGGCA
 TGGGACCACTCAGTCAAGATCACAGGATGGGGAGAGGAGACGCTGCCAGATGGAAGGACGCTCAAATAC
 TGGACTGCGGCCAACTCCTGGGGCCAGCCTGGGGCGAGAGGGGCCACTTCCGCATCGTGCAGCGGCTCA
 ATGAGTGCACATCGAGAGCTTCGTGCTGGGCGTCTGGGGCCGCTGGGCATGGAGGACATGGGTCA
 C

ACGCGTACGCGGCCGCTCGAG - GFP Tag - GTTTAA

Protein Sequence:

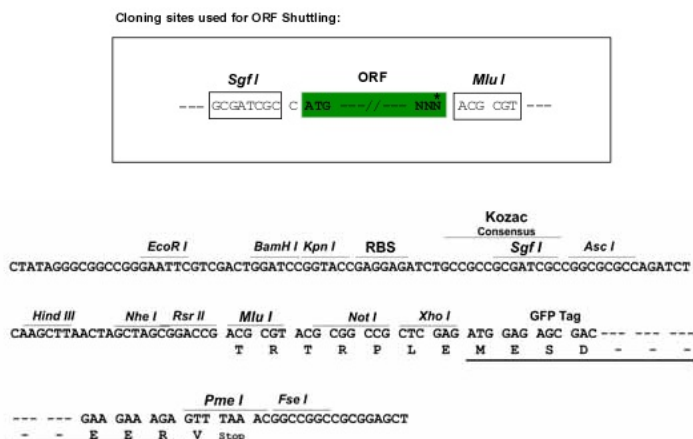
>RG209508 representing NM_022164
 Red=Cloning site Green=Tags(s)

MWRCPLGLLLLLPLAGHLALGAQQGRGRRELAPGLHLRGIIRDAGGRYQEQDLCCRGRADDCALPYLGAI
 CYCDLFCNRTVSDCCPDFWDFCLGVPPFPPIQGCMHGGRIYPVLGTYWDNCNRCTCQENRQWQCDQEP
 LVDPDMIKAINQGNYGWQAGNHSFAFWGMLDEGIRYRLGTRPSSVMMHEIYTVLNPGEVLPFAFEAS
 EKWPNIHEPLDQGNCAWSWAFSTAAVASDRVSIHSLGHMTPVLSQNLSCDTHQQGCRGRLDGAWW
 FLRRRGVSDHCYPFSGRERDEAGPAPPCMMHSRAMGRGRQATAHCPNSYVNNNDIYQVTPVYRLGSND
 KEIMKELMENGVPQALMEVHEDFFLYKGGIYSHTPVSLGRPERYRRHGTHSVKITGWGEETLPDGRTLKY
 WTAANSWGPWGERGHFRIVRGVNECDIESFVLGVWGRVGMEDMGHH

TRTRPLE - GFP Tag - V

Restriction Sites:

Sgfl-MluI

Cloning Scheme:


ACCN: NM_022164

ORF Size: 1401 bp

OTI Disclaimer: The molecular sequence of this clone aligns with the gene accession number as a point of reference only. However, individual transcript sequences of the same gene can differ through naturally occurring variations (e.g. polymorphisms), each with its own valid existence. This clone is substantially in agreement with the reference, but a complete review of all prevailing variants is recommended prior to use. [More info](#)

OTI Annotation: This clone was engineered to express the complete ORF with an expression tag. Expression varies depending on the nature of the gene.

Components: The ORF clone is ion-exchange column purified and shipped in a 2D barcoded Matrix tube containing 10ug of transfection-ready, dried plasmid DNA (reconstitute with 100 ul of water).

Reconstitution Method:

1. Centrifuge at 5,000xg for 5min.
2. Carefully open the tube and add 100ul of sterile water to dissolve the DNA.
3. Close the tube and incubate for 10 minutes at room temperature.
4. Briefly vortex the tube and then do a quick spin (less than 5000xg) to concentrate the liquid at the bottom.
5. Store the suspended plasmid at -20°C. The DNA is stable for at least one year from date of shipping when stored at -20°C.

RefSeq: [NM_022164.3](#)

RefSeq Size: 2177 bp

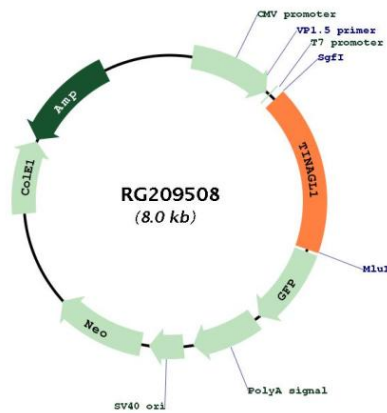
RefSeq ORF: 1404 bp

Locus ID: 64129

UniProt ID: [Q9GZM7](#)

Cytogenetics: 1p35.2
Domains: Pept_C1
Protein Families: Druggable Genome, Protease, Secreted Protein
Gene Summary: The protein encoded by this gene is similar in sequence to tubulointerstitial nephritis antigen, a secreted glycoprotein that is recognized by antibodies in some types of immune-related tubulointerstitial nephritis. Three transcript variants encoding different isoforms have been found for this gene. [provided by RefSeq, Feb 2011]

Product images:



Circular map for RG209508