

## Product datasheet for **RG209491**

### ANKRD32 (SLF1) (NM\_032290) Human Tagged ORF Clone

#### Product data:

Product Type:	Expression Plasmids
Product Name:	ANKRD32 (SLF1) (NM_032290) Human Tagged ORF Clone
Tag:	TurboGFP
Symbol:	ANKRD32
Synonyms:	ANKRD32; BRCTD1; BRCTx
Mammalian Cell Selection:	Neomycin
Vector:	pCMV6-AC-GFP (PS100010)
E. coli Selection:	Ampicillin (100 ug/mL)
ORF Nucleotide Sequence:	>RG209491 representing NM_032290 Red=Cloning site Blue=ORF Green=Tags(s)

TTTTGTAATACGACTCACTATAGGGCGGCCGGAATTCGTCGACTGGATCCGGTACCGAGGAGATCTGCC  
GCC**CGATCGCC**

ATGGGTAGAAATGTGATGCGACACATGTCTGATGACTTAGGAAGTTATGTTTCTCTTTCGTGTGATGACT  
TTTCTTCACAGGAATTAGAGATTTTCATTTGCTCCTTTTCTCCTCCTGGCTTCAAATGTTTGTTCAGAA  
GGCAGTCTTTAAAAGTTGTGTCTACAGAGCTCTGGCAGTGTCTTCTGAGCCACTCTCTTCAGAAA  
ATGGTATATTCTATTTACCAGCCTTGGGAAAACCTGGTGTGCTTGGGTCTGGAAAGATTCAGGTGTCAA  
AGAAAATAGGACAGCGGCCTTGTGTTGACTCTCAGAGAACCTTAATGCTGAATGGTACTAAACAAA  
ACAAGTGAAGGGCTGCCAGAGTTACTAGACCTGAACCTTGCTAAATGTTCTCATCATTAAAAAATTG  
AAAAAGAAGTCAGAAGGAGAATTGTCATGTTCCAAGGAGAATTGCCCTCTGTAGTTAAAAAGATGAATT  
TTCACAAGACTAATCTAAAAGGAGAAACAGCCCTGCATAGAGCTTGATAAATAACCAAGTGAGAAATT  
GATTCTTCTTCTCTTTGCCAGGAATAGACATCAATGTTAAAGACAATGCTGGCTGGACGCCTTTGCAT  
GAAGCCTGTAACATGGCAACACAGTGTGTGCCAGGAAATTTGCAACGTTGTCCAGAGGTAGACTGC  
TCACTCAAGTGGACGGGGTACTCCTTTGCATGATGACTGTCAAACGGACATGTAGAAATTGGCAAGCT  
GCTACTACAGCATGGGGGCCAGTGCTTTTACAACAGAGGAATGCTAAGGGAGAATTGCCCTTGGATTAT  
GTGGTTTACCTCAAATCAAAGAAGAACTGTTTGCTATTACAAAATAGAAGATACAGTGGAGAACTTTC  
ATGCACAAGCAGAGAAACATTTTCAATACCAGCAACTTGAATTTGGCTCCTTTTTACTTAGGATGTT  
GCTAAATTTTTGTTCAATTTTTGATTTATCTTCAGAGTTCATTTAGCTTCCAAAGGGTTAACTCATCTA  
AATGAACTGCTTATGGCTTGAAAAGTCATAAAGAAACCACAGTGTTCATACTGACTGGTTACTGGATC  
TTTATGCTGGAAATATAAGACATTGCAGAACTCCACACATTCTTAAGGAACTGCCTGAGAATTTGAA  
AGTGTGCTCCTGGGTACACTGAGGCCTTGATGATAACATTGGAATGATGTGTCGGTCAGTCATGGAG  
TTTTCA

**ACGCGT**ACGCGGCCGCTCGAG - GFP Tag - GTTTAA



[View online >](#)

**Protein Sequence:** >RG209491 representing NM\_032290  
Red=Cloning site Green=Tags(s)

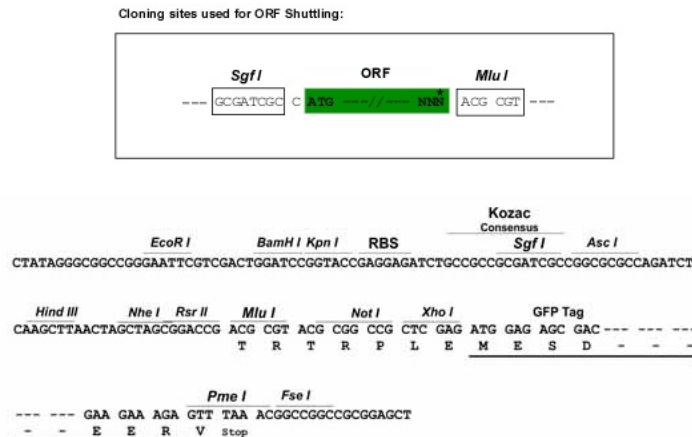
MGRNVMRHMSDDLGSYVSLSCDDFSSQELEIFICSFSSSWLQMFVAEAVFKKLC LQSSGSVSSEPLSLQK  
 MVYSYLPALGKTGVLGSGKIQVSKKIGQRPCFDSQRTLLMLNGTKQKQVEGLPELLDLNLAKSSSLKKL  
 KKKSEGLSCSKENCPSVVKMNFHKTNLKGETALHRACINNQVEKLILLSLPGIDINVKDNAGWTPH  
 EACNYGNTVCVQEILQRCPEVDLLTQVDGVTPLHDALSNHVEIGKLLLQHGGPVLLQQRNAKGELPLDY  
 VVSPQIKEELFAITKIEDTVENFHAQAQEKHFHYQLEFGSFLSRMLLNFCSEIFDLSSEFILASKGLTHL  
 NELLMAKSHKETT SVHTDWLLDLYAGNIKTLQKLP HILKELPENLKVCPGVHTEALMITLEMMCRSVME  
 FS

TRTRPLE – GFP Tag – V

**Restriction Sites:**

SgfI-MluI

**Cloning Scheme:**



**ACCN:** NM\_032290

**ORF Size:** 1266 bp

**OTI Disclaimer:** The molecular sequence of this clone aligns with the gene accession number as a point of reference only. However, individual transcript sequences of the same gene can differ through naturally occurring variations (e.g. polymorphisms), each with its own valid existence. This clone is substantially in agreement with the reference, but a complete review of all prevailing variants is recommended prior to use. [More info](#)

**OTI Annotation:** This clone was engineered to express the complete ORF with an expression tag. Expression varies depending on the nature of the gene.

**Components:** The ORF clone is ion-exchange column purified and shipped in a 2D barcoded Matrix tube containing 10ug of transfection-ready, dried plasmid DNA (reconstitute with 100 ul of water).

**Reconstitution Method:**

1. Centrifuge at 5,000xg for 5min.
2. Carefully open the tube and add 100ul of sterile water to dissolve the DNA.
3. Close the tube and incubate for 10 minutes at room temperature.
4. Briefly vortex the tube and then do a quick spin (less than 5000xg) to concentrate the liquid at the bottom.
5. Store the suspended plasmid at -20°C. The DNA is stable for at least one year from date of shipping when stored at -20°C.

**RefSeq:** [NM\\_032290.2](#), [NP\\_115666.1](#)

**RefSeq Size:** 1870 bp

**RefSeq ORF:** 3177 bp

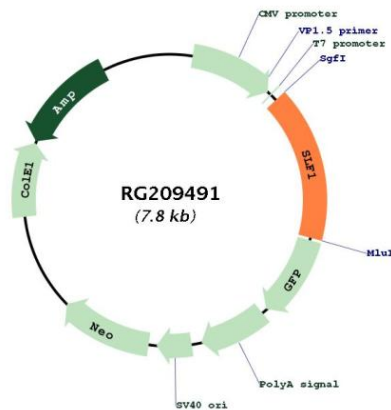
**Locus ID:** 84250

**UniProt ID:** [Q9BQI6](#)

**Cytogenetics:** 5q15

**Gene Summary:** Plays a role in the DNA damage response (DDR) pathway by regulating postreplication repair of UV-damaged DNA and genomic stability maintenance (PubMed:25931565). The SLF1-SLF2 complex acts to link RAD18 with the SMC5-SMC6 complex at replication-coupled interstrand cross-links (ICL) and DNA double-strand breaks (DSBs) sites on chromatin during DNA repair in response to stalled replication forks (PubMed:25931565). Promotes the recruitment of SLF2 and the SMC5-SMC6 complex to DNA lesions (PubMed:25931565).[UniProtKB/Swiss-Prot Function]

### Product images:



Circular map for RG209491