

Product datasheet for **RG209486**

SRPR beta (SRPRB) (NM_021203) Human Tagged ORF Clone

Product data:

Product Type:	Expression Plasmids
Product Name:	SRPR beta (SRPRB) (NM_021203) Human Tagged ORF Clone
Tag:	TurboGFP
Symbol:	SRPR beta
Synonyms:	APMCF1; SR-beta
Mammalian Cell Selection:	Neomycin
Vector:	pCMV6-AC-GFP (PS100010)
E. coli Selection:	Ampicillin (100 ug/mL)
ORF Nucleotide Sequence:	>RG209486 representing NM_021203 Red=Cloning site Blue=ORF Green=Tags(s)

TTTTGTAATACGACTCACTATAGGGCGGCCGGAATTCGTCGACTGGATCCGGTACCGAGGAGATCTGCC
GCC**CGATCGCC**

ATGGCTCCGCGGACTCGCGCCGGCTGGCAGATGGCGCGGTGCCGGGGCACCTTCCAGCCCTACCTAG
ACACCTTGCAGGAGCTGCAGCAGACGGACCAACGCTGTTGTCAGTAGTGGTGGCGTTCTTGCGGT
GCTGCTGACGCTAGTCTTCTGGAAGTTAATCCGGAGCAGAAGGAGCAGTCAGAGAGCTGTTCTTCTGTT
GGCCTTTGTGATCCGGGAAAACGTTGCTCTTTGTCAGGTTGTTAACAGGCCTTTATAGAGACACTCAGA
CGTCCATTACTGACAGCTGTGCTGTATACAGAGTCAACAATAACAGGGGCAATAGTCTGACCTTGATTGA
CCTTCCCGGCCATGAGAGTTGAGGCTTCAGTTCTTAGAGCGGTTAAGTCTTCAGCCAGGCTATTGTG
TTTGTGTGGATAGTGCAGCATTCCAGCGAGAGGTGAAAGATGTGGCTGAGTTTCTGTATCAAGTCTCA
TTGACAGTATGGGTCTGAAGAATACACCATCATTCTTAATAGCCTGCAATAAGCAAGATATTGCAATGGC
AAAATCAGCAAAGTTAATTCAACAGCAGCTGGAGAAAGAACTCAACACCTTACGAGTTACCCGTTCTGCT
GCCCCAGCACTGGACAGTTCAGCACTGCCCTGCTCAGCTGGGGAAGAAAGGCAAAGATTTGAAT
TCTCACAGTTGCCCTCAAAGTGGAGTTCCTGGAGTGCAGTGCCAAGGTTGGAAGAGGGGACGTGGGCTC
TGCTGACATCCAGGACTTGGAGAAATGGCTGGCTAAAATTGCC

AGCGGACCGACGCGTACGCGCCGCTCGAG - GFP Tag - GTTTAA



[View online »](#)

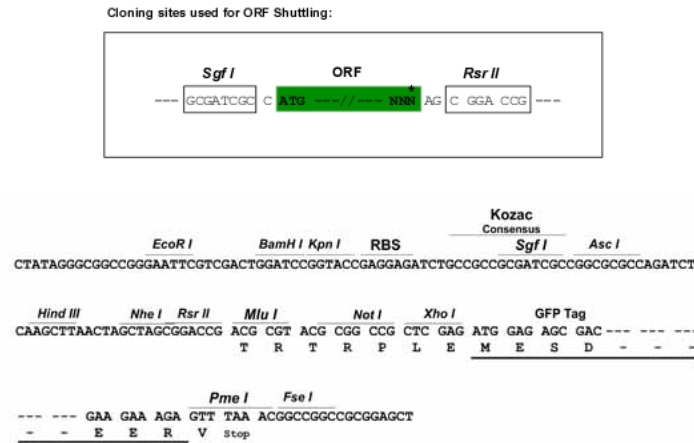
Protein Sequence: >RG209486 representing NM_021203
 Red=Cloning site Green=Tags(s)

MASADSRRLADGGGAGGTFQPYLDTLRQELQQTDPDLLSVVVAVLAVLLTLVFWKLIRSRSSQRAVLLV
 GLCDSGKTLFLVRLLTGLYRDTQTSITDSCAVYRVNRRGNSLTLIDLPGHESLRLQFLERFKSSARAIV
 FVVDSAAFQREVKDVAEFLYQVLIDSMGLKNTPSFLIACNKQDIAMAKSAKLIQQQLEKELNTRLVTRSA
 APSTLSSSTAPAQLGKKGKEFEFSQLPLKVEFLECSAKGGRGDVGSADIQDLEKWLAKIA

SGPTRRRLE - GFP Tag - V

Restriction Sites: SgfI-RsrII

Cloning Scheme:



ACCN: NM_021203

ORF Size: 813 bp

OTI Disclaimer: The molecular sequence of this clone aligns with the gene accession number as a point of reference only. However, individual transcript sequences of the same gene can differ through naturally occurring variations (e.g. polymorphisms), each with its own valid existence. This clone is substantially in agreement with the reference, but a complete review of all prevailing variants is recommended prior to use. [More info](#)

OTI Annotation: This clone was engineered to express the complete ORF with an expression tag. Expression varies depending on the nature of the gene.

Components: The ORF clone is ion-exchange column purified and shipped in a 2D barcoded Matrix tube containing 10ug of transfection-ready, dried plasmid DNA (reconstitute with 100 ul of water).

Reconstitution Method:

1. Centrifuge at 5,000xg for 5min.
2. Carefully open the tube and add 100ul of sterile water to dissolve the DNA.
3. Close the tube and incubate for 10 minutes at room temperature.
4. Briefly vortex the tube and then do a quick spin (less than 5000xg) to concentrate the liquid at the bottom.
5. Store the suspended plasmid at -20°C. The DNA is stable for at least one year from date of shipping when stored at -20°C.

Note: Plasmids are not sterile. For experiments where strict sterility is required, filtration with 0.22um filter is required.

RefSeq: [NM_021203.2](#), [NP_067026.2](#)

RefSeq Size: 1745 bp

RefSeq ORF: 816 bp

Locus ID: 58477

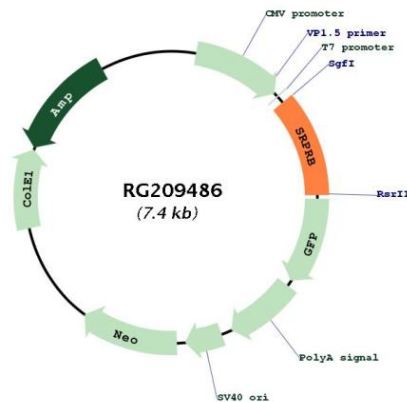
UniProt ID: [Q9Y5M8](#)

Cytogenetics: 3q22.1

Protein Families: Druggable Genome, Transmembrane

Gene Summary: The protein encoded by this gene has similarity to mouse protein which is a subunit of the signal recognition particle receptor (SR). This subunit is a transmembrane GTPase belonging to the GTPase superfamily. It anchors alpha subunit, a peripheral membrane GTPase, to the ER membrane. SR is required for the cotranslational targeting of both secretory and membrane proteins to the ER membrane. [provided by RefSeq, Jul 2008]

Product images:



Circular map for RG209486