

Product datasheet for **RG209480**

RFP2 (TRIM13) (NM_213590) Human Tagged ORF Clone

Product data:

Product Type:	Expression Plasmids
Product Name:	RFP2 (TRIM13) (NM_213590) Human Tagged ORF Clone
Tag:	TurboGFP
Symbol:	RFP2
Synonyms:	CAR; DLEU5; LEU5; RFP2; RNF77
Mammalian Cell Selection:	Neomycin
Vector:	pCMV6-AC-GFP (PS100010)
E. coli Selection:	Ampicillin (100 ug/mL)
ORF Nucleotide Sequence:	>RG209480 representing NM_213590 Red=Cloning site Blue=ORF Green=Tags(s)

TTTTGTAATACGACTCACTATAGGGCGGCCGGAATTCGTCGACTGGATCCGGTACCGAGGAGATCTGCCGCC**CGATCGCC**

ATGGAGCTGCTTGAAGAAGATCTCACATGCCCTATTTGTTGTAGTCTGTTTGATGATCCACGGTTTTGCCTTGCTCCACAACCTTCTGCAAAAAATGCTTAGAAGGTATCTTAGAAGGGAGTGTGCGGAATTCCTTGTGAGACCAGCTCCATTCAAGTGCCTACATGCCGTAAGGAACTTCAGCTACTGGAATTAATAGCCTGCAGTTAATTACTCCCTGAAGGTATTGTGGAAAAGTATAACAAGATCAAGATCTCTCCAAAATGCCAGTATGCAAAGGACACTTGGGGCAGCCTCTCAACATTTCTGCCTGACTGATATGCAGCTGATTTGTGGGATCTGTGCTACTCGTGGGAGCACACCAAACATGTCTTCTGTTCTATTGAAGATGCCTATGCTCAGGAAAGGGATGCCTTTGAGTCCCTCTCCAGAGCTTTGAGACCTGGCGTCGGGGAGATGCTCTTTCTCGCTTGATACCTTGGAACTAGTAAGAGGAAATCCCTACAGTTACTGACTAAAGATTCAGATAAAGTGAAGGAATTTTTTGAAGTTACAACACACACTGGATCAAAGAAGAATGAAATCTGTCTGACTTTGAGACCATGAAACTTGCTGTTATGCAAGCATATGACCCAGAGATCAACAACTCAACACCATCTTGCAGGAGCAACGGATGGCCTTTAACATTGCTGAGGCTTTCAAAGATGTGTGAGAACCATTGTATTTCTGCAACAGATGCAGGAGTTAGAGAGAAAATCAAAGTAATCAAGGAACTCCTTACCTCCCTCTAATTTGCCTGCAAGCCCTTTAATGAAGAATTTGATACCAGTCAGTGGGAAGACATAAACTAGTCGATGTGGATAAACTTTCTTTGCCTCAAGACACTGGCACATTATTAGCAAGATTCCTGGAGCTTTTATAAGTTATTTTGTCTAATCCTTCTGCTTGGCCTTGCATTGTCTTTGGTCTACCATGTTCTAGAAATGGTCATTATTTGATGACCTGGCAACTTGAAAAGGCTGCTTTCAAACCTCAGTTCCCTATCTGACTAAAACAGCCGATTTTCATAGAACAATCAGTTTTTTACTGGGAACAGGTGACAGATGGGTTTTTCATTTTCAATGAAAGATTCAAGAATTTTACTTTGGTGGTACTGAACAATGTGGCAGAATTTGTGTGCAAATATAAACTATTAT

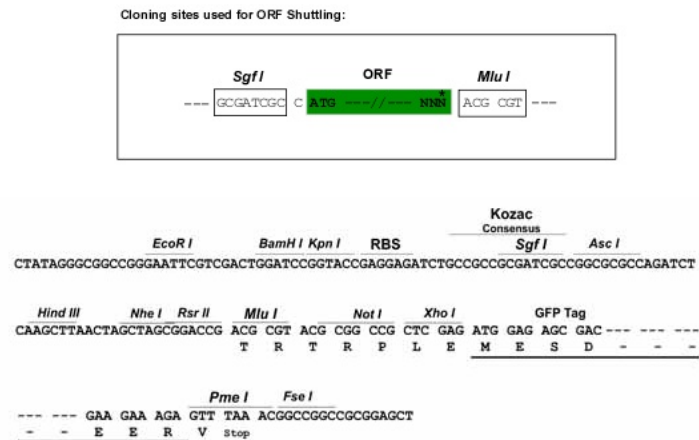
ACGGTACGCGGCCGCTCGAG - GFP Tag - GTTTAA



[View online »](#)

Restriction Sites: SgfI-MluI

Cloning Scheme:



ACCN: NM_213590

ORF Size: 1222 bp

OTI Disclaimer: The molecular sequence of this clone aligns with the gene accession number as a point of reference only. However, individual transcript sequences of the same gene can differ through naturally occurring variations (e.g. polymorphisms), each with its own valid existence. This clone is substantially in agreement with the reference, but a complete review of all prevailing variants is recommended prior to use. [More info](#)

OTI Annotation: This clone was engineered to express the complete ORF with an expression tag. Expression varies depending on the nature of the gene.

Components: The ORF clone is ion-exchange column purified and shipped in a 2D barcoded Matrix tube containing 10ug of transfection-ready, dried plasmid DNA (reconstitute with 100 ul of water).

Reconstitution Method:

1. Centrifuge at 5,000xg for 5min.
2. Carefully open the tube and add 100ul of sterile water to dissolve the DNA.
3. Close the tube and incubate for 10 minutes at room temperature.
4. Briefly vortex the tube and then do a quick spin (less than 5000xg) to concentrate the liquid at the bottom.
5. Store the suspended plasmid at -20°C. The DNA is stable for at least one year from date of shipping when stored at -20°C.

RefSeq: [NM_213590.1](#), [NP_998755.1](#)

RefSeq Size: 7311 bp

RefSeq ORF: 1224 bp

Locus ID: 10206

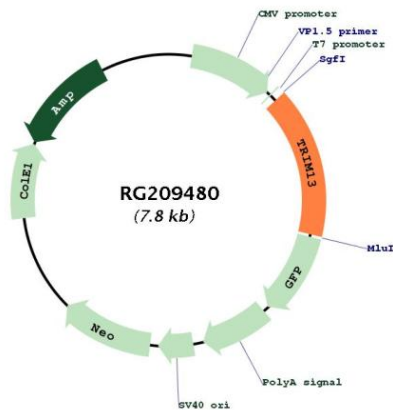
UniProt ID: [O60858](#)

Cytogenetics: 13q14.2

Protein Families: Transmembrane

Gene Summary: This gene encodes a member of the tripartite motif (TRIM) family. The TRIM motif includes three zinc-binding domains, a RING, a B-box type 1 and a B-box type 2, and a coiled-coil region. This gene is located on chromosome 13 within the minimal deletion region for B-cell chronic lymphocytic leukemia. Multiple alternatively spliced transcript variants have been found for this gene. [provided by RefSeq, Jul 2008]

Product images:



Circular map for RG209480