

Product datasheet for **RG209477**

VGF (NM_003378) Human Tagged ORF Clone

Product data:

Product Type:	Expression Plasmids
Product Name:	VGF (NM_003378) Human Tagged ORF Clone
Tag:	TurboGFP
Symbol:	VGF
Synonyms:	SCG7; SgVII
Mammalian Cell Selection:	Neomycin
Vector:	pCMV6-AC-GFP (PS100010)
E. coli Selection:	Ampicillin (100 ug/mL)



[View online »](#)

ORF Nucleotide Sequence:

>RG209477 representing NM_003378
 Red=Cloning site Blue=ORF Green=Tags(s)

TTTTGTAATACGACTCACTATAGGGCGGCCGGAATTCGTCGACTGGATCCGGTACCGAGGAGATCTGCC
 GCC**CGGATCGCC**

ATGAAAGCCCTCAGATTGTCGGCTTCCGCCTCTTCTGCCTTCTGCTGATCAACGGTTAGGGGACGAC
 CCCTGGTCGCCCTGAGGCGCAGCCTCCTCTCAGCTCTGAGCATAAAGAGCCGGTAGCCGGGACGC
 AGTGCCCGGGCCAAAGGATGGCAGCGCCCCAGAGTCCGAGGCGCTCGGAATTCAGGCCGAGGACGAG
 GGAGAGCTTTTCCAGGGCGTGGATCCCCGGGCGCTGGCCGCGGTGCTGCTGACGGCACTCGACCGTCCC
 CCTACCCCCGGCACCAAGCGGCTCCCAGCAGGGGCGGAGGAAGAAGCAGCTGAAGCTCTGCTGACCGA
 GACCGTGCAGCAGCACACAGCCTCCCGGCGCCGAGAGCCCGAGCCCGCGGCTCCGCCTCGCCCT
 CAGACTCCGGAGAATGGGCCGAGGCGAGCGATCCCTCCGAGGAGCTCGAGGCGCTAGCGTCCCTGCTCC
 AGGAACTGCGAGATTTCACTCAAGTAGCGCAAGCGCCAGCAGGAGACGGCGCAGCAGAGACGGAAC
 CCGCACGCACACGCTGACCCGAGTGAATCTGGAGAGCCCGGGCCAGAGCGCGTATGGCGCGCTTCTGG
 GGAGAGTTCCAGGCGCGTGTCCCGAGGCGCGCCCTGCCGCCCCCGGCCCTCTCAATTCAGGCGC
 GTATGCCCGACAGCGGGCCCTTCCCGAAACCCACAAGTTCGGGAAGGAGTGTCTCCCCAAAACACA
 CCTAGGCGAGGCATTGGCACCCCTGTCCAAGGCGTACCAAGGCGTGGCCGCCCGTTCCCAAGGCGCGC
 CGGCCGGAGAGCGCACTCCTGGGCGGCTCCGAGGCGGGCAGCGCCTTCTCCAGCAAGGGCTGGCGCAGG
 TGGAGGCCGGGCGGCGCAGGCGGAGGCCACGCGGCGAGCCCGCGGCGCAGGAAGAGCGGCTGGCCGACCT
 CGCCTCGGACCTGCTGCTCCAGTATTTGCTGCAGGGCGGGGCCCGGCAGCGCGCCTCGGGGTGCGGGG
 CTGCAGGAGGCGCGGAGGAGCAGAGAGTGAAGGGAGGAGGAGGCGGAGCAGGAGAGACCGCGCG
 GGGAGGAGAGGGTGGGGGAAGAGGATGAGGAGGCGCGGCGAGGCGGAGGCGGAGGAGGCGGAGGCGGAGAG
 GCGCGCGCAGAACGCGCTCCTGTTCCGCGAGGAGGAGGAGCGGGGAAGCCGCGCGGAGGACAAGCGCTCC
 CAGGAGGAGACGCGGGCCACCGCGGAAGGAGGCGGAGGGGACAGAGGAGGCGGGGAGGAGGAGGACG
 ACGAGGAGATGGATCCGCAGACGATCGACAGCCTCATTGAGCTGTCCACCAAACCTCCACCTGCCAGCGGA
 CGACGTGGTCAGCATCATCGAGGAGGTGGAGGAGAAGCGGAAGCGGAAGAAGAACGCCCTCCCGAGCCC
 GTGCCGCCCGCGTCCCGCCCCCGCCCCACCCACGTCGCTCCCGCAGCCCCCGCCCCCGCCCCG
 CTCCCGCAGGACGAGCTGCCGACTGGAACGAGGTGCTCCCGCCTGGGATCGGGAGGAGGACGAGGT
 GTACCCGCCAGGCGCGTACCACCCTTCCCAACTACATCCGGCCGCGGACACTGCAGCCGCCCTCGGCC
 TTGCGCCGCCACTACCACCGCCTTCCCGCCTTCCGCGCACTATCCCGCCGGGAGGCCAGCGCGC
 GCGCGCGCAGGAGGAGGCGGAGGCGGAGGAGCGCGGCTGCAGGAGCAGGAGGAGCTGGAGAATTACAT
 CGAGCACGTGCTGCTCCGGCGCCG

AG**CGGACCG**ACGCGTACGCGGCCGCTCGAG - GFP Tag - GTTTAA

Protein Sequence:

>RG209477 representing NM_003378
 Red=Cloning site Green=Tags(s)

MKALRLSASALFCLLLINLGAAPPGRPEAQPPPLSSEHKPEVAGDAVPGPKDGSAPVIRGARNSEPQDE
 GELFQGVDPRALAAVLLQALDRPASPPAPSGSQGPEEEAAEALLTETVRSQTHSLPAPESPEPAAPPRP
 QTPENGPEASDPSELEALASLLQELRDFSPSSAKRQETAAAE TETRHTL TRVNLESPGPERVWRASW
 GEFQARVPERAPLPPAPSQFQARMPDSGPLPETHKFGEGVSSPKTHLGEALAPLSKAYQVAAPFPKAR
 RPE SALLGGSEAGERLLQQGLAQVEAGRRQAEATRQAAAQEERLADLASDLLLQYLLQGGARQRLGGRG
 LQEAAEERESAREEEAEQERRGGEERVGEEDDEAAEAEAEAEERARQNALLFAEEEDGEAGAEDKRS
 QEETPGHRRKEAEGTEEGEEEDDEMDPQTIDSLIELSTKLHLPADDVVSIIIEVEEKRRKKNAPPEP
 VPPRAAPAPTHVRSPQPPPPAPAPARDEL PDWNEVLPWDREDEVYPPGPYHFPNYIRPRTLQPPSA
 LRRRHHYHALPPSRHYPGREAQARRAQEEAEAEERLQEQELENYIEHVLLRRP

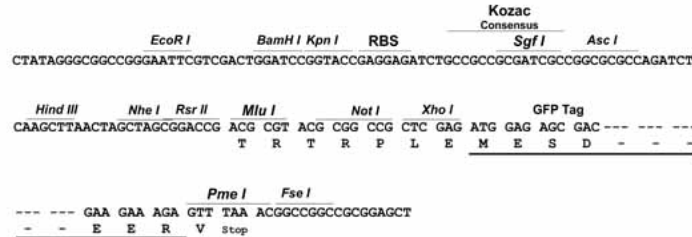
SGPTRRRLE - GFP Tag - V

Restriction Sites:

Sgfl-RsrII

Cloning Scheme:

Cloning sites used for ORF Shuttling:


ACCN: NM_003378

ORF Size: 1845 bp

OTI Disclaimer: The molecular sequence of this clone aligns with the gene accession number as a point of reference only. However, individual transcript sequences of the same gene can differ through naturally occurring variations (e.g. polymorphisms), each with its own valid existence. This clone is substantially in agreement with the reference, but a complete review of all prevailing variants is recommended prior to use. [More info](#)

OTI Annotation: This clone was engineered to express the complete ORF with an expression tag. Expression varies depending on the nature of the gene.

Components: The ORF clone is ion-exchange column purified and shipped in a 2D barcoded Matrix tube containing 10ug of transfection-ready, dried plasmid DNA (reconstitute with 100 ul of water).

Reconstitution Method:

1. Centrifuge at 5,000xg for 5min.
2. Carefully open the tube and add 100ul of sterile water to dissolve the DNA.
3. Close the tube and incubate for 10 minutes at room temperature.
4. Briefly vortex the tube and then do a quick spin (less than 5000xg) to concentrate the liquid at the bottom.
5. Store the suspended plasmid at -20°C. The DNA is stable for at least one year from date of shipping when stored at -20°C.

RefSeq: [NM_003378.4](#)
RefSeq Size: 2545 bp

RefSeq ORF: 1848 bp

Locus ID: 7425

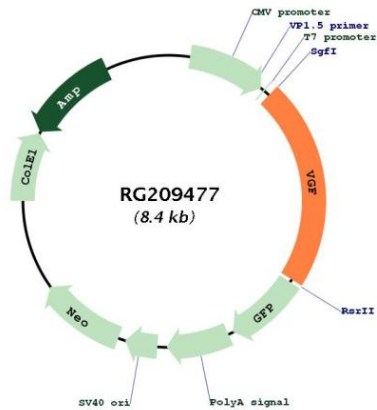
UniProt ID: [O15240](#)

Cytogenetics: 7q22.1

Protein Families: Secreted Protein

Gene Summary: This gene is specifically expressed in a subpopulation of neuroendocrine cells, and is upregulated by nerve growth factor. The structural organization of this gene is similar to that of the rat gene, and both the translated and the untranslated regions show a high degree of sequence similarity to the rat gene. The encoded secretory protein also shares similarities with the secretogranin/chromogranin family, however, its exact function is not known. [provided by RefSeq, Jul 2008]

Product images:



Circular map for RG209477