

## Product datasheet for **RG209457**

### **GTPBP2 (NM\_019096) Human Tagged ORF Clone**

#### **Product data:**

Product Type:	Expression Plasmids
Product Name:	GTPBP2 (NM_019096) Human Tagged ORF Clone
Tag:	TurboGFP
Symbol:	GTPBP2
Synonyms:	JABELS
Mammalian Cell Selection:	Neomycin
Vector:	pCMV6-AC-GFP (PS100010)
E. coli Selection:	Ampicillin (100 ug/mL)



[View online »](#)

**ORF Nucleotide Sequence:**

>RG209457 representing NM\_019096  
 Red=Cloning site Blue=ORF Green=Tags(s)

TTTTGTAATACGACTCACTATAGGGCGGCCGGAATTCGTCGACTGGATCCGGTACCGAGGAGATCTGCC  
 GCC**CGGATCGCC**

ATGGACTCGCGGGTATCGGAGCTGTTGCGCGGCTGCTGCCGGCCCGAGGGGGCCCGGCCGTGGCGGAA  
 CCCTCAAGGCTAGGGGGCCGGCAGCAGCAGCGGCTGCGGGGGCCAAAGGGAAAGAAGAAGAACGGAAG  
 GAACAGAGGGGGCAAAGCCAACAACCCCGTATTTGCCCCCGAGGCTGAAGATGGAAACATTGAATAT  
 AAATTGAAGCTGGTGAATCCATCCAGTACCGCTTTGAGCACCTGGTGACACAAATGAAGTGGCGCTCC  
 AGGAGGGACGTGGTGAAGCCGCTACCAGATTGGGGTAGAGGACAATGGGCTGCTGGTGGGGCTGGCTGA  
 GGAGGAAATGCGAGCTTCGCTCAAGACCCTGCACCGGATGGCAGAGAAGGTTGGGCAGACATAACCGTT  
 CTTGAGAGCGAGAAGTGGATTATGATAGCGACATGCCCCGGAAGATCACCGAGGTGCTAGTACGAAAGG  
 TCCCTGACAACCAACAGTTCCTAGACCTCCGTGTGGCCGTCTGGGGAATGTGGACTCTGGGAAGTCAAC  
 TCTGCTTGGAGTCTGACCCAGGAGAGCTGGACAATGGGCGGGCCGGGCTCGGCTCAACCTTTCCGC  
 CACCTGCATGAGATTAGTCTGGCCGAACCTCCAGCATCAGTTCGAGATCCTGGGCTTTAACAGCAAGG  
 GAGAGGTGGTGAATTACAGCGACTCACGGACAGCAGAAGAGATCTGTGAGAGCAGCTCAAGATGATCAC  
 CTTTCATCGACCTGGCAGGCCACCATAAGTACCTACACACCACCATCTTTGGCCTCACATCACTGCCCC  
 GACTGCGCCCTGCTCCTCGTCAGTGCCAACACTGGGATTGCTGGCACCACAAGGGAACATCTGGGCTGG  
 CCCTGGCCCTGAAAGTGCCTTCTTCATCGTGGTCAGCAAAGATCGACCTATGTGCCAAGACCACAGTGA  
 GAGGACGTACGCCAGCTGGAGCGGGTCTCAAGCAGCTGGCTGCCACAAGTCCCCATGCTGGTCAAC  
 TCTGAGGATGATGCCGTCAGTCTGCCCAGCAGTTTGTCTCAGTACCCCAATGTACCCCCATCTTCACAT  
 TGTCCAGTGTCTGGAGAGAGCTGGACCTCCTCAAAGTCTTTCTGAATATTCTGCCCACTACCAA  
 CAGCAAAGAGCAGGAGGAACATCATGCAGCAGCTGACGGAGTTCAGGTGGATGAAATCTACACAGTACCA  
 GAGGTGGGGACTGTTGTTGGAGGAACACTTTCCAGTGGGATTTGCCGTGAGGGGGACCAGCTGGTGGTGG  
 GCCCCACGGATGATGGCTGCTTCTGGAGCTGAGAGTATGCAGCATCCAGCGCAACCGCTCTGCCTGTCG  
 TGTGCTGCGAGCTGGTCAAGGCTGCTACACTGGCGCTTGGGGACTTTGACCGTGCAGTCTTCCGAAGGGC  
 ATGGTGTGGTGAAGCCGGAGATGAATCCTACCATCTGCTCGGTGTTGAGGCAGAGATAGTCTTACTGT  
 TCCATGCCACCACCTCCGACGAGGATTCAGGTGACAGTACACGTGGGCAACGTACGTACAGCGGCAGT  
 GGTGAAAAGATCCATGCCAAGGACAACTGCGGACAGGGCAGAAAGCAGTGGTACGTTTCCGCTTCTGT  
 AAACCCAGAGTACCTGAAGTGGGCGCCAACTGCTGTCCGGGAGGGTGTACCAAGGGCATCGGCC  
 ATGCTACTGATGTACAAGCCATTACAGCAGGAGAAGCCAGGCCAACATGGGCTT

**ACGCGTACGCGGCCGCTCGAG** – GFP Tag – GTTTAA

**Protein Sequence:**

>RG209457 representing NM\_019096  
 Red=Cloning site Green=Tags(s)

MDSRVSELFGGCCRPGGPVAVGGLTKARGAGSSSGCGGPKGKKKNGRNRGGKANNPPYLPPAEEDGNIEY  
 KLKLVNPSQYRFEHLVTQMKWRLQEGRGEAVYQIGVEDNGLLVGLAEEMRASLKLHRMAEKVGDITV  
 LREREVDYSDMPRKITEVLVRKVPDNQQLDLRVAVLGNVDSGKSTLLGVLQEGELDNRRGRARLNLFR  
 HLHEIQSRTSSISFEILGFNSKGEVVNYSRSTAEIECESSKMITFIDLAGHHKYLHTTIFGLTSYCP  
 DCALLLVSANTGIAGTTREHLGLALAKVPPFIVVSKIDLCAKTTVERTVRQLERVLKQPGCHKVPMPLVT  
 SEDDAVTAQAQFAQSPNVPIFTLSSVSGESLDLLKVFLNLPPLTNSKEQEELMQQLTEFQVDEIYTVP  
 EVGTVVGGTSSGICREGDQLVVGPTDDGCFLELRVCSIQNRNSACRVLRAGQAATLALGDFDRALLRKG  
 MVMVSPENMPTICSVFEAEIVLLFHATTFRRGFQVTVHVGNVQRQAVVEKIHAKDKLRTGEKAVVRFRL  
 KHPEYLKVGAKLLFREGVTKGIGHVTDVQAITAGEAQNMGF

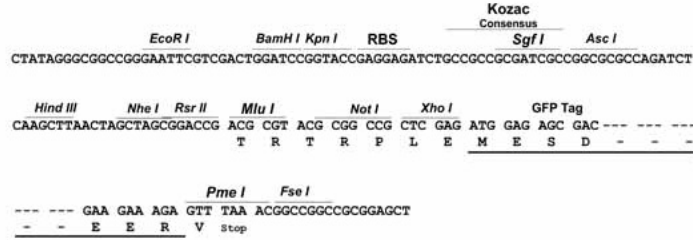
**TRTRPLE** – GFP Tag – V

**Restriction Sites:**

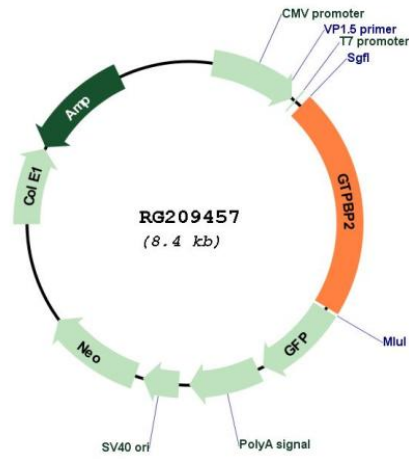
Sgfl-MluI

Cloning Scheme:

Cloning sites used for ORF Shutting:



Plasmid Map:



ACCN: NM\_019096  
 ORF Size: 1806 bp

<b>OTI Disclaimer:</b>	The molecular sequence of this clone aligns with the gene accession number as a point of reference only. However, individual transcript sequences of the same gene can differ through naturally occurring variations (e.g. polymorphisms), each with its own valid existence. This clone is substantially in agreement with the reference, but a complete review of all prevailing variants is recommended prior to use. <a href="#">More info</a>
<b>OTI Annotation:</b>	This clone was engineered to express the complete ORF with an expression tag. Expression varies depending on the nature of the gene.
<b>Components:</b>	The ORF clone is ion-exchange column purified and shipped in a 2D barcoded Matrix tube containing 10ug of transfection-ready, dried plasmid DNA (reconstitute with 100 ul of water).
<b>Reconstitution Method:</b>	<ol style="list-style-type: none"><li>1. Centrifuge at 5,000xg for 5min.</li><li>2. Carefully open the tube and add 100ul of sterile water to dissolve the DNA.</li><li>3. Close the tube and incubate for 10 minutes at room temperature.</li><li>4. Briefly vortex the tube and then do a quick spin (less than 5000xg) to concentrate the liquid at the bottom.</li><li>5. Store the suspended plasmid at -20°C. The DNA is stable for at least one year from date of shipping when stored at -20°C.</li></ol>
<b>RefSeq:</b>	<a href="#">NM_019096.5</a>
<b>RefSeq Size:</b>	2996 bp
<b>RefSeq ORF:</b>	1809 bp
<b>Locus ID:</b>	54676
<b>UniProt ID:</b>	<a href="#">Q9BX10</a>
<b>Cytogenetics:</b>	6p21.1
<b>Domains:</b>	GTP_EFTU, GTP_EFTU_D3, GTP_EFTU_D2
<b>Gene Summary:</b>	GTP-binding proteins, or G proteins, constitute a superfamily capable of binding GTP or GDP. G proteins are activated by binding GTP and are inactivated by hydrolyzing GTP to GDP. This general mechanism enables G proteins to perform a wide range of biologic activities. [supplied by OMIM, Jan 2003]