

Product datasheet for **RG209451**

VEGFC (NM_005429) Human Tagged ORF Clone

Product data:

Product Type:	Expression Plasmids
Product Name:	VEGFC (NM_005429) Human Tagged ORF Clone
Tag:	TurboGFP
Symbol:	VEGFC
Synonyms:	Flt4-L; LMPH1D; LMPHM4; VRP
Mammalian Cell Selection:	Neomycin
Vector:	pCMV6-AC-GFP (PS100010)
E. coli Selection:	Ampicillin (100 ug/mL)
ORF Nucleotide Sequence:	>RG209451 representing NM_005429 Red=Cloning site Blue=ORF Green=Tags(s)

TTTTGTAATACGACTCACTATAGGGCGGCCGGAATTCGTCGACTGGATCCGGTACCGAGGAGATCTGCCGCC**CGATCGCC**

ATGCACTTGCTGGGCTTCTCTCTGTGGCGTGTCTCTGCTCGCCGCTGCGCTGCTCCCGGGTCTCGCGAGGCGCCCGCCGCCCGCCTTCGAGTCCGGACTCGACCTCTCGGACGCGGAGCCCGACGGGCGAGGCCACGGCTTATGCAAGCAAAGATCTGGAGGAGCAGTTACGGTCTGTGCCAGTGTAGTGAACACTCATGACTGTACTCTACCCAGAATATTGAAAAATGTACAAGTGCAGCTAAGGAAAGGAGGCTGGCAACATAACAGAGAACAGGCCAACCTCAACTCAAGGACAGAAGAGACTATAAAATTTGCTGCAGCACATTATAATACAGAGATCTTAAAAAGTATTGATAATGAGTGGAGAAAGACTCAATGCATGCCACGGGAGGTGTGTATAGATGTGGGAAGGAGTTTGGAGTCGCGACAAACACCTTCTTTAAACCTCCATGTGTGTCCGTCTACAGATGTGGGGTTGCTGCAATAGTGAGGGGCTGCAGTGCATGAACACCAGCAGGACTACCTCAGCAAGACGTTATTTGAATTACAGTGCCTCTCTCAAGGCCCAACCAGTAACAATCAGTTTTGCCAATCACACTTCTGCCGATGCATGTCTAACTGGATGTTTACAGACAAGTTCATTCCATTATTAGACGTTCCCTGCCAGCAACTACACAGTGCAGGCAGCGAACAAGACCTGCCCCACCAATTACATGTGGAATAATCACATCTGCAGATGCCTGGCTCAGGAAGATTTTATGTTTTCTCGGATGCTGGAGATGACTCAACAGATGGATTCCATGACATCTGTGGACCAACAAGGAGCTGGATGAAGAGACCTGTCAGTGTGCTGCAGAGCGGGGCTTCGGTCTGCCAGCTGTGGACCCCAACAAGAAGTACAGAAAACCTATGCCAGTGTGTCTGTAAAAACAACCTTCCCCAGCCATGTGGGGCCAACCGAGAATTTGATGAAAAACATGCCAGTGTGTATGTAAAAAGAACCTGCCCCAGAAATCAACCCCTAAATCCTGGAAAATGTGCCTGTGAATGTACAGAAAAGTCCACAGAAATGCTTGTAAAAAGGAAAGAAGTCCACCACCAACATGCAGCTGTTACAGACGGCCATGTACGAACCGCCAGAAGGCTTGTGAGCCAGGATTTTCATATAGTGAAGAAGTGTGCTGTTGTCCCTTCATATTGAAAAAGACCACAAATGAGC

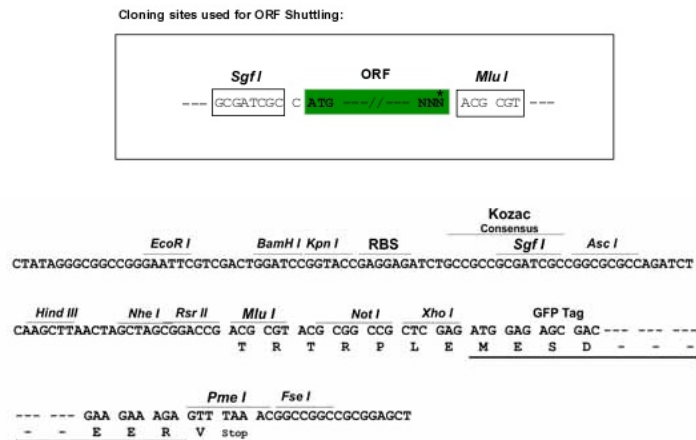
ACGCGTACGCGGCCGCTCGAG - GFP Tag - GTTTAA



[View online »](#)

Restriction Sites: SgfI-MluI

Cloning Scheme:



ACCN: NM_005429

ORF Size: 1257 bp

OTI Disclaimer: Due to the inherent nature of this plasmid, standard methods to replicate additional amounts of DNA in E. coli are highly likely to result in mutations and/or rearrangements. Therefore, OriGene does not guarantee the capability to replicate this plasmid DNA. Additional amounts of DNA can be purchased from OriGene with batch-specific, full-sequence verification at a reduced cost. Please contact our customer care team at custsupport@origene.com or by calling 301.340.3188 option 3 for pricing and delivery.

The molecular sequence of this clone aligns with the gene accession number as a point of reference only. However, individual transcript sequences of the same gene can differ through naturally occurring variations (e.g. polymorphisms), each with its own valid existence. This clone is substantially in agreement with the reference, but a complete review of all prevailing variants is recommended prior to use. [More info](#)

OTI Annotation: This clone was engineered to express the complete ORF with an expression tag. Expression varies depending on the nature of the gene.

Components: The ORF clone is ion-exchange column purified and shipped in a 2D barcoded Matrix tube containing 10ug of transfection-ready, dried plasmid DNA (reconstitute with 100 ul of water).

Reconstitution Method:

1. Centrifuge at 5,000xg for 5min.
2. Carefully open the tube and add 100ul of sterile water to dissolve the DNA.
3. Close the tube and incubate for 10 minutes at room temperature.
4. Briefly vortex the tube and then do a quick spin (less than 5000xg) to concentrate the liquid at the bottom.
5. Store the suspended plasmid at -20°C. The DNA is stable for at least one year from date of shipping when stored at -20°C.

RefSeq: [NM_005429.2](#), [NP_005420.1](#)

RefSeq Size: 2076 bp

RefSeq ORF: 1260 bp

Locus ID: 7424

UniProt ID: [P49767](#)

Cytogenetics: 4q34.3

Domains: PDGF, CXCXC

Protein Families: Druggable Genome, Secreted Protein

Protein Pathways: Bladder cancer, Cytokine-cytokine receptor interaction, Focal adhesion, mTOR signaling pathway, Pancreatic cancer, Pathways in cancer, Renal cell carcinoma

Gene Summary: The protein encoded by this gene is a member of the platelet-derived growth factor/vascular endothelial growth factor (PDGF/VEGF) family. The encoded protein promotes angiogenesis and endothelial cell growth, and can also affect the permeability of blood vessels. The proprotein is further cleaved into a fully processed form that can bind and activate VEGFR-2 and VEGFR-3 receptors. [provided by RefSeq, Apr 2014]

Product images:



Circular map for RG209451