

Product datasheet for **RG209416**

ZNF343 (NM_024325) Human Tagged ORF Clone

Product data:

Product Type:	Expression Plasmids
Product Name:	ZNF343 (NM_024325) Human Tagged ORF Clone
Tag:	TurboGFP
Symbol:	ZNF343
Synonyms:	dj734P14.5
Mammalian Cell Selection:	Neomycin
Vector:	pCMV6-AC-GFP (PS100010)
E. coli Selection:	Ampicillin (100 ug/mL)



[View online »](#)

ORF Nucleotide Sequence:

>RG209416 ORF sequence, **codon optimized**.
Due to the complexity of NM_024325, the ORF clone is codon optimized for mammalian Expression.
The nucleotide sequence differs from the reference sequence, yet the amino acid sequence remains identical.

Red=Cloning site Blue=ORF Green=Tags(s)

TTTTGTAATACGACTCACTATAGGGCGGCCGGAATTCGTGCGACTGGATCCGGTACCGAGGAGATCTGCC
 GCC**CGATCGCC**

ATGATGCTGCCTTATCCGTCTGCTTTGGGGACCAGTACTGGAAGAAATACTGTTGCCTAAGAATGGAG
 AGAATGTGGAGACAATGAAAAACTCACGCAGAATCACAAGGCCAAAGGGCTGCCTTCCAATGATACAGA
 CTGTCCCCAGAAGAAAGAGGGGAAAGCGCAAATTTGGTTCTGTGACATTCGCGATGTGACTGTGATC
 TTTACCGAGGCCGAATGAAAACGCTGTCCCCGAGCAGAGAAATCTGTATAAGGAGTTATGCTGGAGA
 ACTATCGAAACCTCCTCTCCCTTGCCGAGCCAAAGCCTGAAATTTACACCTGCAGCTCATGTCTGTTGGC
 ATTCAGTTGTCAACAGTTCTGAGTCAACATGTACTGCAAAATCTTCTGGGGCTCTGCGCCGAGAACCAT
 TTTTCATCCCGCAATAGCTCTCCTGGCCATTGGAAGCAACAAGGGCAACAGTATTCACATGTGTCTTGCT
 GGTGTTGAAAATGCCGAGGGTCAAGAGCGCGGGGGCTTAAGCCTTGGTCCCGAGAAGTGAAGAAAG
 AGAAACAGTCCGGCTTTCCCTAGTCCGCTCCAACGACAGAGCGCGAGTCCGAGAAAGGGAAACATGGTA
 GTGGAGACTGAACCTCTCAGCACAGCGGCCAATCCCGTTCAGTTGGACAAAGGGCTTAAGAGCTTG
 AGACGTTGAGGTTCCGGCCATCAATTGCAGGGAGTATGAACCCGACCACAACCTGGAAGCAATTTTAT
 TACCAACCCACGCACACTCCTGGGAAAAAGCCATACATCTGCAGCGACTGCGGCAGATCCTTCAAAGAC
 CGCTCTACTCTGATCAGACACCACCGCATCCATTCAATGGAGAAGCCCTATGTGTGACGCGAGTGCGGCC
 GGGGCTTCAGCCAGAAGTCTAACCTGAGCCGGCACAAAGAACTCACTCAGAGGAGAAGCCGTATCTCTG
 TAGAGAATGTGGCCAGAGTTTTCGATCTAAGTCTATCCTTAACAGGCACCAGTGGACCCATTCCGAAGAA
 AAGCCTTACGTATGTTCCGAATGCGGGAGAGGGTCTCAGAAAAAGCTCCTTCATTAGACACCAGCGGA
 CGCATAGTGGTGAGAAGCCATACGTCTGTCTGGAGTGCGGCGAAGTTTCTGCGATAAGTCTACCTTGCG
 CAAGCATCAGCGAATACACTCAGGCGAGAAGCCATACGTGTGTCGCGAGTGTGGCCGCGGCTTTAGCCAG
 AACTCAGACCTTATCAAACATCAGAGAACGCATCTGGACGAAAAACCATACGTCTGCCGCAATGCGGAA
 GAGGCTTTTGTGATAAGAGTACCTTGATAATTCAGAAAGAACACTCAGGGGAAAAGCCCTATGTGTG
 TGGCGAGTGCAGGAGGGTCTCTCGAAAGAGCTTGTGCTGGTGCACCAGAGGACCCATAGCGGAGAA
 AAGCATTACGTGTGCCGAGTGCAGAAGGGGATTTCCAGAAATCTAACCTGATCAGGACCAGCGGA
 CCCACTCCAACGAAAAACCATACATCTGCCGGGAATGCGGTGAGGATTCTGTGACAAGTCCACCCTGAT
 CGTCCATGAGAGGACACTCAGGTGAAAAACCATACGTTTGTTCAGAGTGTGGAAGAGGATTTTCTAGA
 AAATCCCTGCTCCTTGTTCACCAGCGGACCCATTCAGGCGAGAAACACTATGTTTGCCGGGAGTGTGGGC
 GGGGATTTCTCAGAAAGCAACCTTATTCGCCATCAGAGAACACAC

ACGCGTACGCGGCCGCTCGAG - GFP Tag - GTTTAA

Protein Sequence: >RG209416 representing NM_024325
 Red=Cloning site Green=Tags(s)

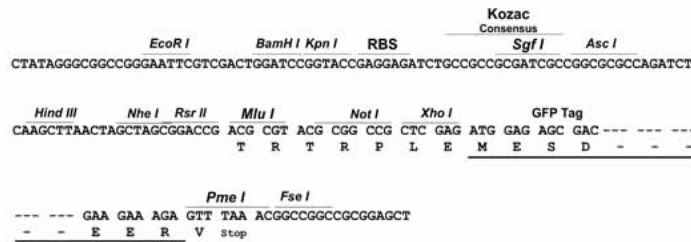
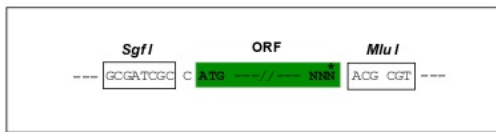
MMLPYPSALGDQYWEEILLPKNGENVETMKKLTONHKAKGLPSNDTDCPQKKEGKAQIVVPVTFRDVTVI
 FTEAEWKRLSPEQRNLYKEVMLENYRNLLSLAEPKPEIYTCSSCLLAFSCQQLSQHVLQIFLGLCAENH
 FHPGNSSPGHWKQQGQQYSHVSCWFENAEGQERGGGSKPWSARTEERETSRAFPSPLQRQSASPRKGNMV
 VETEPSSAQRPNPVQLDKGLKELETLRFGAINCREYEPDHNLESNFITNPRILLGKKPYICSDCGRSFKD
 RSTLIRHHRHISMEKPYVCSECGRGSQKSNLSRHQRTHSEKPYLCRECGQSFRSKSILNRHQWTHSEE
 KPYVCSECGRGSSEKSSFIRHQRTHSGEKPYVCLCEGRSFCDKSTLRKHQRIHSGEKPYVCRECGRGSQ
 NSDLIKHQRTLDEKPYVCRECGRGSFCDKSTLIIHERTHSGEKPYVCGECGRGSFRKSLLLVHQRTHSGE
 KHYYVCRECGRGSQKSNLIRHQRTHSNEKPYICRECGRGSFCDKSTLIVHERTHSGEKPYVCRECGRGS
 KSLLLVHQRTHSGEKHYVCRECGRGSFKSNLIRHQRTH

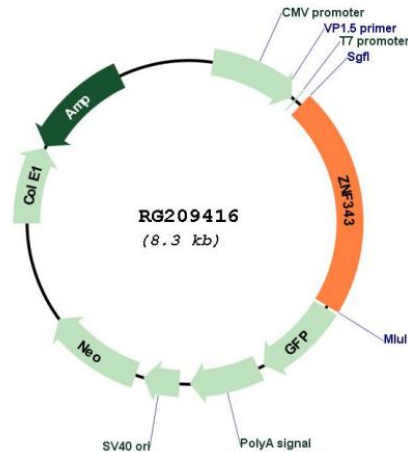
TRTRPLE - GFP Tag - V

Restriction Sites: SgfI-MluI

Cloning Scheme:

Cloning sites used for ORF Shutting:



Plasmid Map:


ACCN: NM_024325

ORF Size: 1797 bp

OTI Disclaimer: The molecular sequence of this clone aligns with the gene accession number as a point of reference only. However, individual transcript sequences of the same gene can differ through naturally occurring variations (e.g. polymorphisms), each with its own valid existence. This clone is substantially in agreement with the reference, but a complete review of all prevailing variants is recommended prior to use. [More info](#)

OTI Annotation: This clone was engineered to express the complete ORF with an expression tag. Expression varies depending on the nature of the gene.

Components: The ORF clone is ion-exchange column purified and shipped in a 2D barcoded Matrix tube containing 10ug of transfection-ready, dried plasmid DNA (reconstitute with 100 ul of water).

Reconstitution Method:

1. Centrifuge at 5,000xg for 5min.
2. Carefully open the tube and add 100ul of sterile water to dissolve the DNA.
3. Close the tube and incubate for 10 minutes at room temperature.
4. Briefly vortex the tube and then do a quick spin (less than 5000xg) to concentrate the liquid at the bottom.
5. Store the suspended plasmid at -20°C. The DNA is stable for at least one year from date of shipping when stored at -20°C.

RefSeq: [NM_024325.4](#), [NP_077301.4](#)

RefSeq Size: 3644 bp

RefSeq ORF:	1800 bp
Locus ID:	79175
UniProt ID:	Q6P1L6
Cytogenetics:	20p13
Domains:	KRAB, zf-C2H2
Protein Families:	Transcription Factors
Gene Summary:	May be involved in transcriptional regulation.[UniProtKB/Swiss-Prot Function]