

Product datasheet for **RG209372**

C6orf58 (NM_001010905) Human Tagged ORF Clone

Product data:

Product Type: Expression Plasmids
Product Name: C6orf58 (NM_001010905) Human Tagged ORF Clone
Tag: TurboGFP
Symbol: C6orf58
Synonyms: LEG1
Mammalian Cell Selection: Neomycin
Vector: pCMV6-AC-GFP (PS100010)
E. coli Selection: Ampicillin (100 ug/mL)
ORF Nucleotide Sequence: >RG209372 representing NM_001010905
 Red=Cloning site Blue=ORF Green=Tags(s)

TTTTGTAATACGACTCACTATAGGGCGGCCGGAATTCGTCGACTGGATCCGGTACCGAGGAGATCTGCC
 GCC**CGATCGCC**

ATGGCTTTTCTTCCTCCTGGGTTTGTGTACTAGTTGGTTCCTTTCTGCTTCCTTAGCAGGGACTTCCA
 ATCTCTCAGAGACAGAGCCCCCTCTGTGGAAGGAGAGTCTGGTCAGCTCAGTGACTACAGGGTGGAGAA
 CAGCATGTACATTATTAATCCCTGGGTATACCTTGAGAGAATGGGGATGTATAAAATCATATTGAATCAG
 ACAGCCAGGTATTTGCAAATTTGCACCAGATAATGAACAGAATATTTATGGGGTTCCTCTGCAGT
 ATGGCTGGCAATATAGGACAGGCAGATTAGCTGATCCAACCCGAAGGACAACTGTGGCTATGAATCTGG
 AGATCATATGTGCATCTCTGTGGACAGTTGGTGGGCTGATTTGAATTATTTCTGTCTTCATTACCCTTT
 CTTGCTGCGGTTGATTCTGGTGAATGGGGATATCATCAGACCAAGTCAGGCTTTTGCCCCACCCAAGA
 ATGAGAGGAAGTTTTGTTATGATGTTTCTAGCTGTCTGTCATCCTTCCCTGAGACAATGAACAAGTGGAA
 CACCTTTTACCAGTATTTGCAGTCACCTTTTAGTAAGTTTGTATGATCTGTTGAAGTACTTATGGGCTGCA
 CACTTCAACCTTGGCAGATAATATCAAAAGTTTGAAGACAGATATGATTATTATTCTAAAGCAGAAG
 CGCATTTTGAGAGAAGTTGGGTACTGGCTGTGGATCATTTAGCTGCAGTCCTCTTCTACAACCTTGAT
 TAGATCATATAAGTTCCAGAAGGGCATGCCACCACGAATCTTCTTAATACTGATGTAGCCCTTTTCATC
 AGTGACTTTACTGCTTTTTCAGAATGTAGTCCTGGTCTTCTAAATATGCTTGACAATGTGGATAAATCTA
 TAGGTTATCTTTGTACAGAAAAATCTAATGTATATAGAGATCATTCCGGAATCTAGCTCTAGAAGTTATGG
 AAATAACTCC

ACGCGTACGCGGCCGCTCGAG - GFP Tag - GTTTAA



[View online »](#)

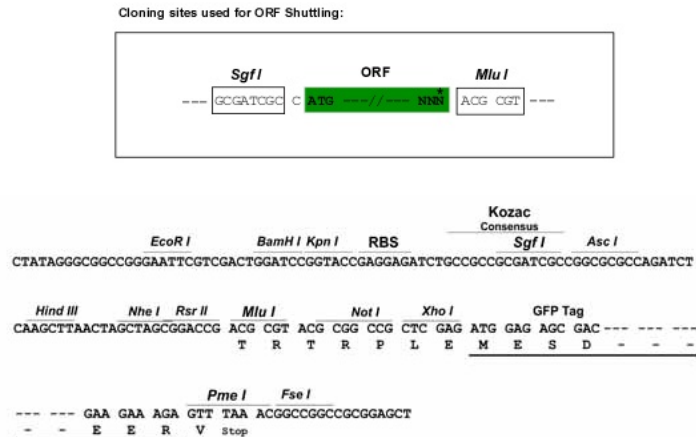
Protein Sequence: >RG209372 representing NM_001010905
 Red=Cloning site Green=Tags(s)

MAFLPSWVCVLVGSFSASLAGTSNLSETEPPLWKESPGQLSDYRVENSMYIINPWVYLERMGMYKIILNQ
 TARYFAKFPADNEQNILWGLPLQYGWQYRTGRLADPTRRNCGYESGDHMCISVDSWWADLNYFLSSLPF
 LAAVDSGVMGISSDQVRLPPPKNERKFCYDVSSCRSSFPETMNKWNFTFYQLQSPFSKFDDLLKYLWAA
 HTSTLADNIKSFEDRYDYYSKAEAHFERSWVLAVDHLAAVLFPTTLIRSYKFKQGMPPRILLNTDVAPFI
 SDFTAFAQNVVLVLLNMLDNVDKISGYLCTEKSINVYRDHSESSRSYGNNS

TRTRPLE - GFP Tag - V

Restriction Sites: SgfI-MluI

Cloning Scheme:



ACCN: NM_001010905

ORF Size: 990 bp

OTI Disclaimer: The molecular sequence of this clone aligns with the gene accession number as a point of reference only. However, individual transcript sequences of the same gene can differ through naturally occurring variations (e.g. polymorphisms), each with its own valid existence. This clone is substantially in agreement with the reference, but a complete review of all prevailing variants is recommended prior to use. [More info](#)

OTI Annotation: This clone was engineered to express the complete ORF with an expression tag. Expression varies depending on the nature of the gene.

Components: The ORF clone is ion-exchange column purified and shipped in a 2D barcoded Matrix tube containing 10ug of transfection-ready, dried plasmid DNA (reconstitute with 100 ul of water).

Reconstitution Method:

1. Centrifuge at 5,000xg for 5min.
2. Carefully open the tube and add 100ul of sterile water to dissolve the DNA.
3. Close the tube and incubate for 10 minutes at room temperature.
4. Briefly vortex the tube and then do a quick spin (less than 5000xg) to concentrate the liquid at the bottom.
5. Store the suspended plasmid at -20°C. The DNA is stable for at least one year from date of shipping when stored at -20°C.

RefSeq: [NM_001010905.3](#)

RefSeq Size: 1200 bp

RefSeq ORF: 993 bp

Locus ID: 352999

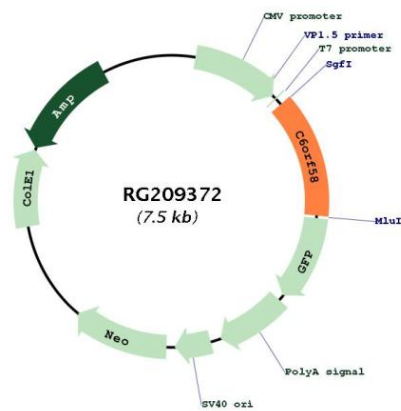
UniProt ID: [Q6P5S2](#)

Cytogenetics: 6q22.33

Protein Families: Secreted Protein

Gene Summary: May be involved in early liver development.[UniProtKB/Swiss-Prot Function]

Product images:



Circular map for RG209372