

## Product datasheet for **RG209368**

### **ARL8B (NM\_018184) Human Tagged ORF Clone**

#### Product data:

**Product Type:** Expression Plasmids  
**Product Name:** ARL8B (NM\_018184) Human Tagged ORF Clone  
**Tag:** TurboGFP  
**Symbol:** ARL8B  
**Synonyms:** ARL10C; Gie1  
**Mammalian Cell Selection:** Neomycin  
**Vector:** pCMV6-AC-GFP (PS100010)  
**E. coli Selection:** Ampicillin (100 ug/mL)  
**ORF Nucleotide Sequence:** >RG209368 representing NM\_018184  
**Red**=Cloning site **Blue**=ORF **Green**=Tags(s)

TTTTGTAATACGACTCACTATAGGGCGGCCGGAATTCGTCGACTGGATCCGGTACCGAGGAGATCTGCC  
GCC**CGATCGCC**

ATGCTGGCGTCACTCTCCCGCTGCTGGACTGGTTCGGTTCGCTCTTCTGGAAGGAAGAGATGGAGCTGA  
CGCTCGTGGGGCTGCAGTACTCGGGCAAGACCACCTTCGTCATGTCATCGCGTCAGGTCAATTCAGTGA  
AGATATGATACCCACAGTGGCTTCAACATGAGGAAGGTAAGTAAAGGTAACGTCACAATAAAGATCTGG  
GACATAGGAGGACAACCCGATTCGAAGCATGTGGGAGCGGTATTGCAGAGGAGTCAATGCTATTGTTT  
ACATGATAGATGCTGCAGATCGTAAAAGATAGAAGCTTCCCGAAATGAGCTACATAATCTCTAGATAA  
ACCACAGTTACAAGGAATTCAGTGTAGTGTGGAAACAAGAGAGATCTTCTAATGCCTGGATGAG  
AAACAGCTAATTGAAAAAATGAATCTGTCTGCTATTTCAGGATAGAGAAATTTGCTGCTATTCAATTTCTT  
GCAAAGAAAAGGATAATATAGATATCACACTTCAGTGGCTTATTCAGCATTCAAATCTAGAAGAAGC

**ACGCGT**ACGCGGCCGCTCGAG - GFP Tag - GTTTAA

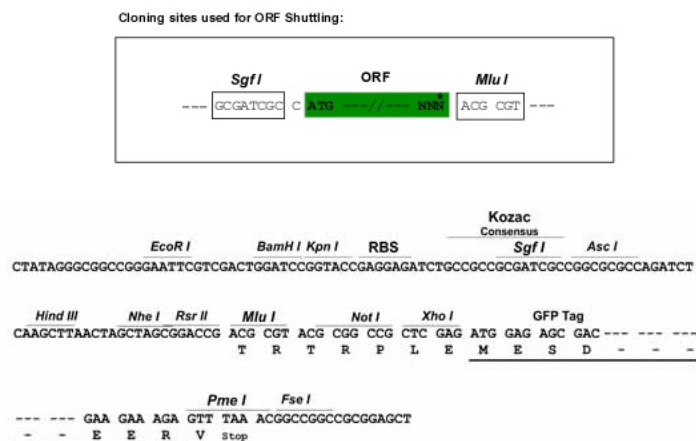
**Protein Sequence:** >RG209368 representing NM\_018184  
**Red**=Cloning site **Green**=Tags(s)

MLALISRLLDWFRSLFWKEEMELTLVGLQYSGKTFVNVIASGQFSEDMIPTVGFNMRKVTGNVTIKIW  
DIGGQPRFRSMWERYCRGVNAIVYMIDAADREKIEASRNELHNLDPQLQGIPVLVLGNKRDLPNALDE  
KQLIEKMNLSAIQDREICCYISCKEKNIDITLQWLIQHKSRRS

**TRTRPLE** - GFP Tag - V

**Restriction Sites:** Sgfl-MluI



**Cloning Scheme:**


**ACCN:** NM\_018184

**ORF Size:** 558 bp

**OTI Disclaimer:** The molecular sequence of this clone aligns with the gene accession number as a point of reference only. However, individual transcript sequences of the same gene can differ through naturally occurring variations (e.g. polymorphisms), each with its own valid existence. This clone is substantially in agreement with the reference, but a complete review of all prevailing variants is recommended prior to use. [More info](#)

**OTI Annotation:** This clone was engineered to express the complete ORF with an expression tag. Expression varies depending on the nature of the gene.

**Components:** The ORF clone is ion-exchange column purified and shipped in a 2D barcoded Matrix tube containing 10ug of transfection-ready, dried plasmid DNA (reconstitute with 100 ul of water).

**Reconstitution Method:**

1. Centrifuge at 5,000xg for 5min.
2. Carefully open the tube and add 100ul of sterile water to dissolve the DNA.
3. Close the tube and incubate for 10 minutes at room temperature.
4. Briefly vortex the tube and then do a quick spin (less than 5000xg) to concentrate the liquid at the bottom.
5. Store the suspended plasmid at -20°C. The DNA is stable for at least one year from date of shipping when stored at -20°C.

**RefSeq:** [NM\\_018184.3](#)

**RefSeq Size:** 3008 bp

**RefSeq ORF:** 561 bp

**Locus ID:** 55207

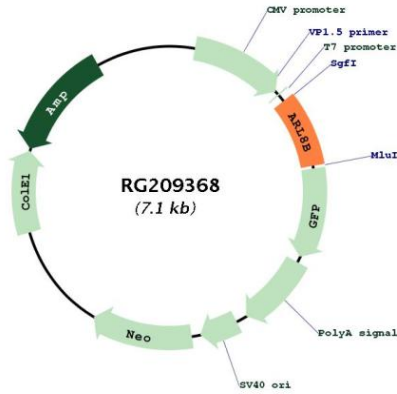
**UniProt ID:** [Q9NVJ2](#)

**Cytogenetics:** 3p26.1

**Domains:** RAB, SAR, ARF, arf

**Gene Summary:** Plays a role in lysosome motility (PubMed:16537643, PubMed:25898167). In neurons, mediates the anterograde axonal long-range transport of presynaptic lysosome-related vesicles required for presynaptic biogenesis and synaptic function (By similarity). May play a role in chromosome segregation (PubMed:15331635).[UniProtKB/Swiss-Prot Function]

**Product images:**



Circular map for RG209368