

Product datasheet for **RG209351**

XAGE3 (NM_130776) Human Tagged ORF Clone

Product data:

Product Type: Expression Plasmids
Product Name: XAGE3 (NM_130776) Human Tagged ORF Clone
Tag: TurboGFP
Symbol: XAGE3
Synonyms: CT12.3a; CT12.3b; GAGED4; PLAC6; pp9012; XAGE-3
Mammalian Cell Selection: Neomycin
Vector: pCMV6-AC-GFP (PS100010)
E. coli Selection: Ampicillin (100 ug/mL)
ORF Nucleotide Sequence: >RG209351 representing NM_130776
 Red=Cloning site Blue=ORF Green=Tags(s)

TTTTGTAATACGACTCACTATAGGGCGGCCGGAATTCGTCGACTGGATCCGGTACCGAGGAGATCTGCC
 GCC**CGATCGCC**

ATGATTTGGCGAGGAAGATCAACATATAGGCCTAGGCCGAGGAGAAGTGTACCACCTCCTGAGCTGATTG
 GGCCTATGCTGGAGCCCGGTGATGAGGAGCCTCAGCAAGAGGAACCACCAACTGAAAGTCGGGATCCTGC
 ACCTGGTCAGGAGAGAGAAGAAGATCAGGGTGCAGCTGAGACTCAAGTGCCTGACCTGGAAGCTGATCTC
 CAGGAGCTGTCTCAGTCAAAGACTGGGGTGAATGTGAAATGGTCCTGATGACCAGGGGAAGATTCTGC
 CAAAATCAGAACAATTTAAAATGCCAGAAGGAGGTGACAGGCAACCACAGTT

ACGCGTACGCGGCCGCTCGAG - GFP Tag - GTTTAA

Protein Sequence: >RG209351 representing NM_130776
 Red=Cloning site Green=Tags(s)
 MIWRGRSTYRPRRRSVPPPELIGPMLPEGDDEEPQEEPPTESRDPAPGQEREEDQGAETQVPDLEADL
 QELSQSKTGGECGNGPDDQGKILPKSEQFKMPEGGDRQPQV

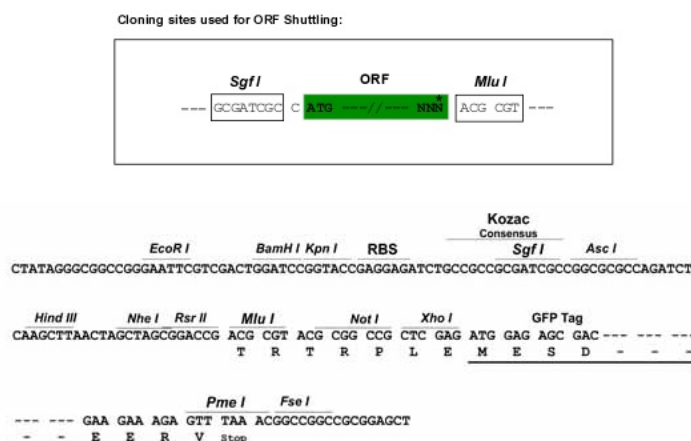
TRTRPLE - GFP Tag - V

Restriction Sites: Sgfl-MluI

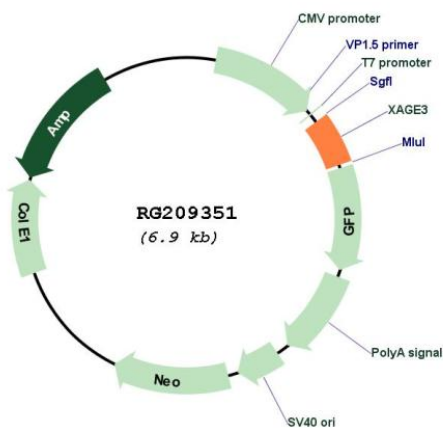


[View online »](#)

Cloning Scheme:



Plasmid Map:



ACCN: NM_130776

ORF Size: 333 bp

OTI Disclaimer: The molecular sequence of this clone aligns with the gene accession number as a point of reference only. However, individual transcript sequences of the same gene can differ through naturally occurring variations (e.g. polymorphisms), each with its own valid existence. This clone is substantially in agreement with the reference, but a complete review of all prevailing variants is recommended prior to use. [More info](#)

OTI Annotation:	This clone was engineered to express the complete ORF with an expression tag. Expression varies depending on the nature of the gene.
Components:	The ORF clone is ion-exchange column purified and shipped in a 2D barcoded Matrix tube containing 10ug of transfection-ready, dried plasmid DNA (reconstitute with 100 ul of water).
Reconstitution Method:	<ol style="list-style-type: none">1. Centrifuge at 5,000xg for 5min.2. Carefully open the tube and add 100ul of sterile water to dissolve the DNA.3. Close the tube and incubate for 10 minutes at room temperature.4. Briefly vortex the tube and then do a quick spin (less than 5000xg) to concentrate the liquid at the bottom.5. Store the suspended plasmid at -20°C. The DNA is stable for at least one year from date of shipping when stored at -20°C.
RefSeq:	<u>NM_130776.1</u> , <u>NP_570132.1</u>
RefSeq Size:	493 bp
RefSeq ORF:	336 bp
Locus ID:	170626
UniProt ID:	<u>Q8WTP9</u>
Cytogenetics:	Xp11.22
Gene Summary:	This gene is a member of the XAGE subfamily, which belongs to the GAGE family. The GAGE genes are expressed in a variety of tumors and in some fetal and reproductive tissues. This gene is expressed in placenta and fetal liver/spleen, and may function in inhibiting cancer cell growth. The protein encoded by this gene shares a sequence similarity with other GAGE/PAGE proteins. Because of the expression pattern and the sequence similarity, this protein also belongs to a family of CT (cancer-testis) antigens. Alternative splicing of this gene generates 2 transcript variants differing in the 5' UTR. [provided by RefSeq, Jul 2008]