

Product datasheet for **RG209333**

AER61 (EOGT) (NM_173654) Human Tagged ORF Clone

Product data:

Product Type:	Expression Plasmids
Product Name:	AER61 (EOGT) (NM_173654) Human Tagged ORF Clone
Tag:	TurboGFP
Symbol:	AER61
Synonyms:	AER61; AOS4; C3orf64; EOGT1
Mammalian Cell Selection:	Neomycin
Vector:	pCMV6-AC-GFP (PS100010)
E. coli Selection:	Ampicillin (100 ug/mL)
ORF Nucleotide Sequence:	>RG209333 representing NM_173654 Red=Cloning site Blue=ORF Green=Tags(s)

TTTTGTAATACGACTCACTATAGGGCGGCCGGAATTCGTCGACTGGATCCGGTACCGAGGAGATCTGCC
GCC**CGATCGCC**

ATGTTAATGTTGTTTGTCTTTGGAGTCTTACTTCATGAAGTCTCACTGAGTGGTCAGAATGAAGCTCCTC
CTAATACTCACAGCATTCCAGGCGAACCTCTGTAACTATGCCAGCATCCGTTGCCAGAGGAGCACAT
TCCCTTCTTTTGCACAACAATAGGCATATTGCCACTGTCTGTAGGAAAGACTCTCTTTGCCATATAAG
AAACACCTAGAGAAGCTAAAGTACTGCTGGGTTATGAGAAATCTGCAAACCAGAGTTCAGGTTTGGTT
ACCCAGTTTGCAGCTATGTCGACATGGGATGGACGGACTCTTGAGTCAGCTGAGGACATATTTTGGAA
ACAAGCTGACTTTGGATATGCCAGAGAGAGGCTGGAGGAGATGCATGTGCTCTGTGAGCCTAAGGAAACG
AGTGACTCAAGTCTGGTGTGTTCCCGTTATCTTCAGTACTGCAGGGCAACCAATCTCTATCTTGATTTAA
GAAACATCAAGAGAAATCATGACAGATTTAAGGAGGACTTTTTCCAGAGTGGTGAATTTGGAGGGCACTG
TAAACTTGACATCCGTACATTGACGTCTGAAGTCTCAGCGCAAAGCCCTCTGCAGTCATGGTTTGTCTGAG
CTACAAAGCTATACTCAGCTCAACTTCAAGCTATAGAAGATGCTAAATGTGACATTGTCAATGAAAAAC
CAACATATTTTATGAAATAGATGCAGGTGTTAACATGTATCACCCTTCTGTGATTTTCAATCTTTA
TATTACTCAGCAGTAAATAACTCATTCACTGACGTGTACATCGTGTGTTGGACACCGATGGAAAA
ATTCGAGTCACCATTCTTGACGGAGCACAGAATACCGGAAAATCCTTAACCAAAATGAGCTTGTAAATG
CACTGAAAACAGTATCTACATTTGAAGTCCAGATTGTTGATTACAAGTATAGAGAAGTGGGTTTTTAGA
TCAACTAAGGATCACACACAACACGGACATATTTATTGGAATGCATGGAGCTGGTCTGACCCATTTACTT
TTCTTCCAGACTGGGCTGCTGTATTTGAACTGTACAAGTGTGAAGATGAACGCTTTACTTAGACTTGG
CCAGGCTGAGAGGCGTTCACTACATCACTTGGCGACGGCAGAACAAGTCTTTCTCAGGATAAGGGCCA
CCATCCAACCCTGGGGAGCACCCGAAGTTCACCAACTACTCTTTCGATGTAGAAGAAATTTATGTATCTT
GTCCTTCAGGCTGCAGACCAGTATTGCAACACCCAAAGTGGCCATTTAAGAAGAAACATGATGAGCTA

ACGCGTACGCGGCCGCTCGAG - GFP Tag - GTTTAA



[View online »](#)

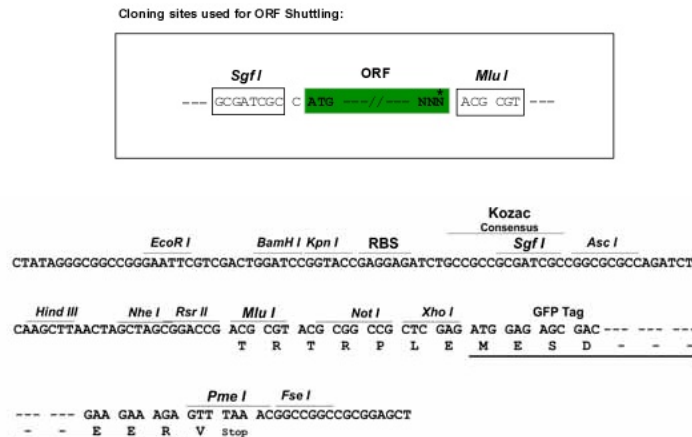
Protein Sequence: >RG209333 representing NM_173654
Red=Cloning site Green=Tags(s)

MLMLFVFGVLLHEVSLSGQNEAPPNTHSIPGEPLYNYASIRLPEEHIPFFLHNNRHIATVCRKDSLCPYK
 KHLEKLYCWGYEKSCKPEFRFGYPVCSYVDMGWTDTLESAEDIFWKQADFGYARERLEEMHVLQCPKET
 SDSSLVCSRYLQYCRATNLYDLRNIKRNHDRFKEDFFQSGEIGGHCKLDIRTLTSEGQRKSPQLQSWFAE
 LQSYTQLNFRPIEDAKCDIVIEKPTYFMKLDAGVNMYYHHFCDFINLYITQHVNSFSTDVYIVMWDTDGK
 IRVTILARSTEYRKILNQNELVNALKTVSTFEVQIVDYKYRELGFLDQLRITHNTDIFIGMHGAGLTHLL
 FLPDWAAVFELYNCEDERCYLDLARLRGVHYITWRRQNKVFPQDKGHPTLGEHPKFTNYSFDVEEFMYL
 VLQAADHVLQHPKWPFKKKHDEL

TRTRPLE - GFP Tag - V

Restriction Sites: SgfI-MluI

Cloning Scheme:



ACCN: NM_173654

ORF Size: 1329 bp

OTI Disclaimer: The molecular sequence of this clone aligns with the gene accession number as a point of reference only. However, individual transcript sequences of the same gene can differ through naturally occurring variations (e.g. polymorphisms), each with its own valid existence. This clone is substantially in agreement with the reference, but a complete review of all prevailing variants is recommended prior to use. [More info](#)

OTI Annotation: This clone was engineered to express the complete ORF with an expression tag. Expression varies depending on the nature of the gene.

Components: The ORF clone is ion-exchange column purified and shipped in a 2D barcoded Matrix tube containing 10ug of transfection-ready, dried plasmid DNA (reconstitute with 100 ul of water).

Reconstitution Method:

1. Centrifuge at 5,000xg for 5min.
2. Carefully open the tube and add 100ul of sterile water to dissolve the DNA.
3. Close the tube and incubate for 10 minutes at room temperature.
4. Briefly vortex the tube and then do a quick spin (less than 5000xg) to concentrate the liquid at the bottom.
5. Store the suspended plasmid at -20°C. The DNA is stable for at least one year from date of shipping when stored at -20°C.

RefSeq: [NM_173654.1](#), [NP_775925.1](#)

RefSeq Size: 4152 bp

RefSeq ORF: 1332 bp

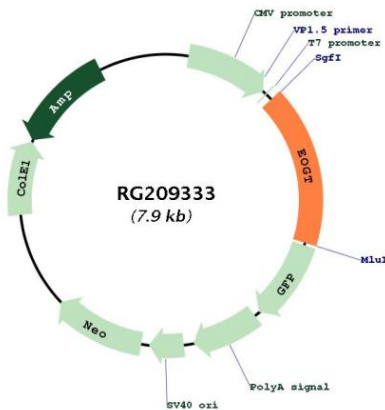
Locus ID: 285203

UniProt ID: [Q5NDL2](#)

Cytogenetics: 3p14.1

Gene Summary: This gene encodes an enzyme that acts in the lumen of the endoplasmic reticulum to catalyze the transfer of N-acetylglucosamine to serine or threonine residues of extracellular-targeted proteins. This enzyme modifies proteins containing eukaryotic growth factor (EGF)-like domains, including the Notch receptor, thereby regulating developmental signalling. Mutations in this gene have been observed in individuals with Adams-Oliver syndrome 4. Alternative splicing results in multiple transcript variants. [provided by RefSeq, Aug 2015]

Product images:



Circular map for RG209333