

## Product datasheet for **RG209327**

### **TMEM144 (NM\_018342) Human Tagged ORF Clone**

#### Product data:

Product Type:	Expression Plasmids
Product Name:	TMEM144 (NM_018342) Human Tagged ORF Clone
Tag:	TurboGFP
Symbol:	TMEM144
Mammalian Cell Selection:	Neomycin
Vector:	pCMV6-AC-GFP (PS100010)
E. coli Selection:	Ampicillin (100 ug/mL)
ORF Nucleotide Sequence:	>RG209327 representing NM_018342 Red=Cloning site Blue=ORF Green=Tags(s)

TTTTGTAATACGACTCACTATAGGGCGGCCGGAATTCGTCGACTGGATCCGGTACCGAGGAGATCTGCC  
GCC**CGATCGCC**

ATGAGCAACAATGGAGCAGACCTAACCTTTGGTTACATTTCTGTTTTGTAGCTATCCTTTTGGTTGGCT  
CAAATTTGTGCCACTTAAAAATTTGATACTGGTGATGGAATGTTTCTCCAGTGGGTTCTTTGTGCTGC  
CATATGGTTGGTTGCCTTGGTTGTCAATCTGATATTACATTGTCCAAAGTTTTGGCCTTTTGCATGCTT  
GGGGCTGCATTTGGGCAACAGGGAACATTGCTGTTGTCCAATTATCAAACCATTGGTTTAGCCCTTG  
GAATCTTAATCTGGGATCATTAAATGCCTTAACCTGGCTGGGCAAGCTCAAGGTTTGGCTGTTTGGATT  
GGATGCAGAAGAAGTATCAAATCCGCTGCTAAATTACATTGGAGCTGGGCTATCAGTAGTAAGTGCCTTC  
ATATTTTGTTCATCAAAGTGAATACCAAATAACACGTGTTCCATGGATACCACTCCATTAATAACAG  
AGCATGTGATCAACACAACCAAGACCCCTGTTCTGGTGGATAAACTTTCTACAGTACACCACCGCAT  
AGTGGGCTGCAGTCTTGCAGTGATATCTGGAGTACTCTATGGATCTACATTTGTGCCAATCATCTACATC  
AAGGACCACAGCAAAGAAATGATAGTATATGCAGGGGCAAGCCAATATGATTTAGACTATGTGTTT  
CGCACTCAGTGGCATCTTCTTACAAGTACTGTCTACTTTCTGGCTACTGCATAGCCATGAAAAATAG  
TCCTAAACTATATCCTGAAGCAGTCTACCAGGATTCCTGTGAGGACTTTGGGCTATAGCTACCTGC  
TGTTGGTTCATAGCAAATCACTCTGAGTGTGTTGGTCAGTTTTCCAATAACTGCTGCTGGTCCGGGAT  
TTATAGCTGCAATGTGGGTATCTTCATGTTTAAAGAAATAAAGGTCTACAAAACCTACCTATTAATGAT  
ACTTGCATTTTGCATCATCTTGACTGGAGCCTTATGCACTGCTTTTTCTAAAATC

**ACGCGT**ACGCGGCCGCTCGAG - GFP Tag - GTTTAA



[View online »](#)

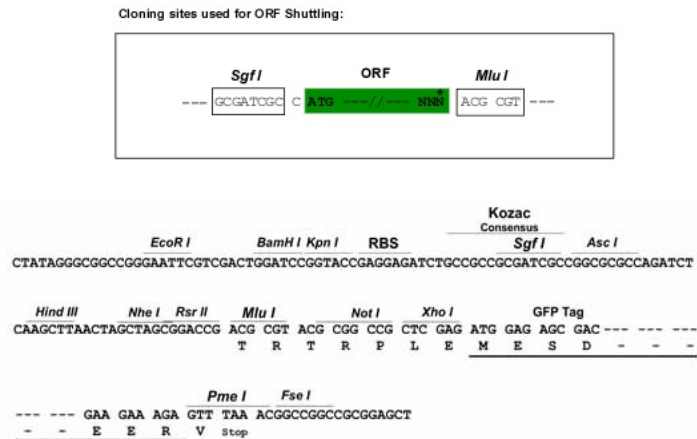
**Protein Sequence:** >RG209327 representing NM\_018342  
Red=Cloning site Green=Tags(s)

MSNNGADLTFGYISCFVAILLFGSNFVPLKKFDTGDMFLQWVLC AAIWLVALV VNLILHCPKFWPFAML  
 GGCIWATGNI AVVPIIKTIGLGLGILIWGSFNAL TGWASSRFGWFGLD AEEVSNPLLN YIGAGLSVVS AF  
 IFLFIKSEIPNNTCSMDT TPLITEHVINTTQDPCS WVDKLVSTVHHRIVGCSLAVISGVL YGSTFVPIIYI  
 KDHSKRND SIYAGASQYDLDYVFAHFSGIFL TSTVYFLAYCIAMKNSPKLYPEAVLPGFLSGVLWAIATC  
 CWFIA NHLSAVVSFPIITAGPGFIAAMWGI FFMFKEIKGLQNYLLMILAF CII LTGALCTAFSKI

TRTRPLE - GFP Tag - V

**Restriction Sites:** SgfI-MluI

**Cloning Scheme:**



**ACCN:** NM\_018342

**ORF Size:** 1035 bp

**OTI Disclaimer:** The molecular sequence of this clone aligns with the gene accession number as a point of reference only. However, individual transcript sequences of the same gene can differ through naturally occurring variations (e.g. polymorphisms), each with its own valid existence. This clone is substantially in agreement with the reference, but a complete review of all prevailing variants is recommended prior to use. [More info](#)

**OTI Annotation:** This clone was engineered to express the complete ORF with an expression tag. Expression varies depending on the nature of the gene.

**Components:** The ORF clone is ion-exchange column purified and shipped in a 2D barcoded Matrix tube containing 10ug of transfection-ready, dried plasmid DNA (reconstitute with 100 ul of water).

**Reconstitution Method:**

1. Centrifuge at 5,000xg for 5min.
2. Carefully open the tube and add 100ul of sterile water to dissolve the DNA.
3. Close the tube and incubate for 10 minutes at room temperature.
4. Briefly vortex the tube and then do a quick spin (less than 5000xg) to concentrate the liquid at the bottom.
5. Store the suspended plasmid at -20°C. The DNA is stable for at least one year from date of shipping when stored at -20°C.

**Note:** Plasmids are not sterile. For experiments where strict sterility is required, filtration with 0.22um filter is required.

**RefSeq:** [NM\\_018342.3](#)

**RefSeq Size:** 3055 bp

**RefSeq ORF:** 1038 bp

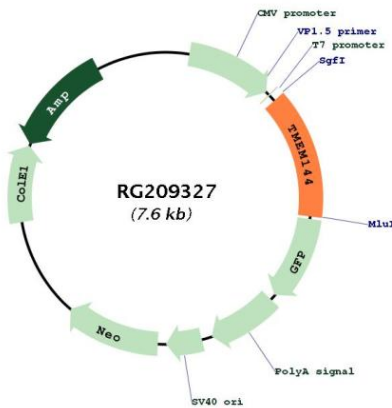
**Locus ID:** 55314

**UniProt ID:** [Q7Z5S9](#)

**Cytogenetics:** 4q32.1

**Protein Families:** Transmembrane

**Product images:**



Circular map for RG209327