

Product datasheet for **RG209322**

PDXDC1 (NM_015027) Human Tagged ORF Clone

Product data:

| | |
|---------------------------|---|
| Product Type: | Expression Plasmids |
| Product Name: | PDXDC1 (NM_015027) Human Tagged ORF Clone |
| Tag: | TurboGFP |
| Symbol: | PDXDC1 |
| Synonyms: | LP8165 |
| Mammalian Cell Selection: | Neomycin |
| Vector: | pCMV6-AC-GFP (PS100010) |
| E. coli Selection: | Ampicillin (100 ug/mL) |



[View online »](#)

ORF Nucleotide Sequence:

>RG209322 representing NM_015027
 Red=Cloning site Blue=ORF Green=Tags(s)

TTTTGTAATACGACTCACTATAGGGCGGCCGGGAATTCGTCGACTGGATCCGGTACCGAGGAGATCTGCC
 GCC**CGGATCGCC**

ATGGACGCGTCCCTGGAGAAGATAGCAGACCCACGTTAGCTGAAATGGGAAAAAATTGAAGGAGGCAG
 TGAAGATGCTGGAGGACAGTCAGAGAAGAACAGAAAGGAAAATGGAAAGAAGCTCATATCCGGAGATAT
 TCCAGGCCCACTCCAGGGCAGTGGGCAAGATATGGTGAGCATCCTCCAGTTAGTTCAGAATCTCATGCAT
 GGAGATGAAGATGAGGAGCCCCAGAGCCCCAGAATCCAAAATATTGGAGAACAAGGTCATATGGCTTTGT
 TGGGACATAGTCTGGGAGCTTATTTCAACTCTGGACAAAGAGAAGCTGAGAAAATTACAAGTAGGAT
 ACTTTAGATACACCTTATGGCTATGCAGAAATTTTTCAGATATGAAAATGGGTGTGCTTATTTCCACGAA
 GAGGAAAGAGAAGGACTTGCAAAGATATGTAGGCTTGCCATTCTTCGATATGAAGACTTCGTAGTGG
 ATGGCTTCAATGTGTTATATAACAAGAAGCCTGCATATATCTTAGTGTCTGTAGACCTGGCCTGGG
 CCAATACCTTTGTAATCAGCTCGGCTTGCCCTTCCCCTGCTTGTGCCGTGTACCCTGTAACACTGTGTTT
 GGATCCCAGCATCAGATGGATGTTGCCCTTCTGGAGAAAATGATTAAGATGATATAGAGCGAGGAAGAC
 TGCCCCCTGTTGCTTGTCCGAAATGCAGGAACGGCAGCAGTAGGACACACAGACAAGATTGGGAGATTGAA
 AGAACTCTGTGAGCAGTATGGCATATGGCTTATGTGGAGGGTGTGAATCTGGCAACATTGGCTCTGGGT
 TATGTCTCCTCATCAGTGTGGCTGCAGCCAAATGTGATAGCATGACGATGACTCCTGGCCCGTGGCTGG
 GTTTGCCAGCTGTTCTCGCGTGACACTGTATAAACACGATGACCCTGCCTTGACTTTAGTTGCTGGTCT
 TACATCAAATAAGCCACAGACAACTCCGTGCCCTGCCTCTGTGGTTATCTTTACAATACTTGGGACTT
 GATGGGTTTGTGGAGAGGATCAAGCATGCCTGTCAACTGAGTCAACGGTTCAGGAAAAGTTGAAGGAAG
 TGAATTACATCAAATCTTGGTGAAGATGAGCTCAGCTCCCCAGTGGTGGTGTTCAGATTTTTCCAGGA
 ATTACCAGGCTCAGATCCGGTGTAAAGCCGTCCCAGTGCCCAACATGACACCTTCAGGAGTCGGCCGG
 GAGAGGCACTCGTGTGACGCGCTGAATCGCTGGCTGGGAGAACAGCTGAAGCAGCTGGTGCCTGCAAGCG
 GCCTCACAGTCATGGATCTGGAAGCTGAGGGCACGTGTTTGCAGTTCAGCCCTTTGATGACCGCAGCAGT
 TTTAGGAACTCGGGGAGAGGATGTGGATCAGCTCGTAGCCTGCATAGAAAGCAAATGCCAGTGTGTGC
 TGTACGCTCCAGTTGCGTGAAGAGTTCAAGCAGGAAGTGAAGCAACAGCAGGTCTCCTATATGTTGATG
 ACCCTAACTGGTCTGGAATAGGGGTTGTCAGGTATGAACATGCTAATGATGATAAGAGCAGTTTGAATC
 AGATCCCAGGGGAAAACATCCATGCTGGACTCCTGAAGAAGTTAAATGAACTGGAATCTGACCTAACC
 TTTAAAATAGGCCCTGAGTATAAGAGCATGAAGAGCTGCCTTTATGTCCGCATGGCGAGCGACAACGTCG
 ATGCTGCTGAGCTCGTGGAGACCATTGCGGCCACAGCCCGGAGATAGAGGAGAAGCTCGAGGCTTCTGGA
 AAACATGACAGAAGTGGTTCGGAAGGCATTTCAGGAAGCTCAAGTGGAGCTGCAGAAGGCAAGTGAAGAA
 CGGCTTCTGGAAGAGGGGTTGTCGGCAGATCCCTGTAGTGGGCTCCGTGCTGAATTTGTTTCTCCGG
 TCCAGGCTTTACAGAAGGGAAGAACTTTAACTTGACAGCAGGCTCTCTGGAGTCCACAGAACCCATATA
 TGTCTACAAAGCACAAAGTGCAGGAGTCACGCTGCCTCCAACGCCTCGGGCAGTCGCACCAAGCAGAGG
 CTTCCAGGCCAGAAGCCTTTTAAAGGTCCCTGCGAGGTTTCAGATGCTTTGAGTGAGACCAGCTCAGTCA
 GTCACATTGAAGACTTAGAAAAGGTGGAGCGCCTATCCAGTGGCCGGAGCAGATCACCTCGAGGCCAG
 CAGCACTGAGGGACACCCAGGGGCTCCCAGCCCTCAGCACACCGACCAGCCGAGGCCCTCCAGAAAAGGG
 GTCCCACACCCAGAAGATGACCACTCACAGGTAGAAGGACCGGAGAGCTTAAGA

AG**CGGACCG**ACGCGTACGCGGCCGCTCGAG - GFP Tag - GTTTAA

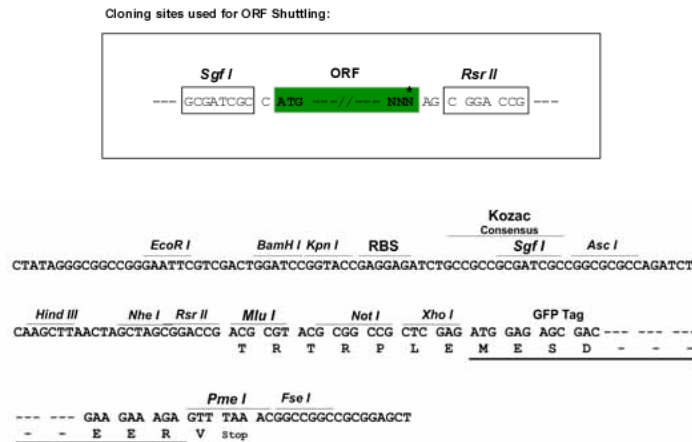
Protein Sequence: >RG209322 representing NM_015027
 Red=Cloning site Green=Tags(s)

MDASLEKIADPTLAEMGKNLKEAVKMLEDSQRRTTEEENGGKLLISGDIPGPLQSGSQDMVSILQLVQNLMMH
 GDEDEEPQSPRIQNIQEQQHMALLGHSLGAYISTLDKEKLRKLTTRILSDTTLWLCRIFRYENGCCAYFHE
 EEREGLAKICRLAIHSRYEDFVVDGFNVLNKKPVIYLSAAARPLGQYLCNQLGLPFPCLCRVPCNTVF
 GSQHQMDVAFLEKLIKDDIERGRLLPLLVANAGTAAVGHGTDKIGRLKELCEQYGIWLHVEGVNLTALG
 YVSSSVLAAAKCDSMTMPGPWLGPAVPAVTLYKHDDPALTLVAGLTSNKPTDKLRALPLWLSLQYLGL
 DGFVERIKHACQLSQRLQESLKEVNYIKILVEDELSSPVVFRFFQELPGSDPVFKAVPVNMTSPGVGR
 ERHSCDALNRWLGELKQLVPASGLTVMDEAEGTCLRF SPLMTAAVLGTRGEDVDQLVACIESKLPVLC
 CTLQLREEFKQEVEATAGLLYVDDPNWSGIGVVRYEHANDKSSLKSDPEGENIHAGLLKKLNELES
 DLTKFKIGPEYKSMKSCLYVGMASDNVDAEELVETIAATAREIEENSRLLENMTEVVRKGIQEAQVELQKASEE
 RLLLEGLRQIPVVGSLNWFSPVQALQKGRFTNLTAGSLESTEPYVYKAQAGVTLPTPSGSRKQQR
 LPGQKPFKRSLRGS DALSETSSVSHIEDLEKVERLSSGPEQITLEASSTEGHPGAPSPQHTDQTEAFQKG
 VPHPEDDHSQVEGPESLR

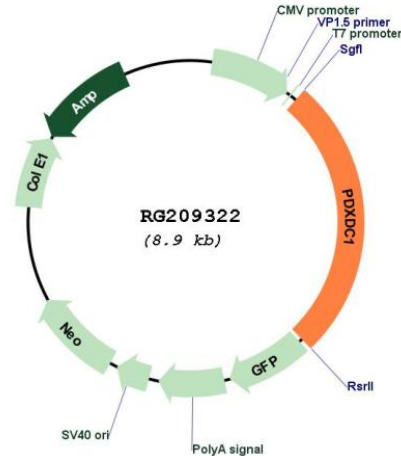
SGPTRRRLE - GFP Tag - V

Restriction Sites: SgfI-RsrII

Cloning Scheme:



Plasmid Map:



ACCN: NM_015027

ORF Size: 2364 bp

OTI Disclaimer: The molecular sequence of this clone aligns with the gene accession number as a point of reference only. However, individual transcript sequences of the same gene can differ through naturally occurring variations (e.g. polymorphisms), each with its own valid existence. This clone is substantially in agreement with the reference, but a complete review of all prevailing variants is recommended prior to use. [More info](#)

OTI Annotation: This clone was engineered to express the complete ORF with an expression tag. Expression varies depending on the nature of the gene.

Components: The ORF clone is ion-exchange column purified and shipped in a 2D barcoded Matrix tube containing 10ug of transfection-ready, dried plasmid DNA (reconstitute with 100 ul of water).

Reconstitution Method:

1. Centrifuge at 5,000xg for 5min.
2. Carefully open the tube and add 100ul of sterile water to dissolve the DNA.
3. Close the tube and incubate for 10 minutes at room temperature.
4. Briefly vortex the tube and then do a quick spin (less than 5000xg) to concentrate the liquid at the bottom.
5. Store the suspended plasmid at -20°C. The DNA is stable for at least one year from date of shipping when stored at -20°C.

RefSeq: [NM_015027.1](#), [NP_055842.1](#)

RefSeq Size: 4512 bp

RefSeq ORF: 2367 bp

Locus ID: 23042

UniProt ID: [Q6P996](#)

Cytogenetics: 16p13.11