

Product datasheet for **RG209316**

OVOL1 (NM_004561) Human Tagged ORF Clone

Product data:

Product Type: Expression Plasmids
Product Name: OVOL1 (NM_004561) Human Tagged ORF Clone
Tag: TurboGFP
Symbol: OVOL1
Synonyms: HOVO1
Mammalian Cell Selection: Neomycin
Vector: pCMV6-AC-GFP (PS100010)
E. coli Selection: Ampicillin (100 ug/mL)
ORF Nucleotide Sequence: >RG209316 representing NM_004561
 Red=Cloning site Blue=ORF Green=Tags(s)

TTTTGTAATACGACTCACTATAGGGCGGCCGGAATTCGTCGACTGGATCCGGTACCGAGGAGATCTGCC
 GCC**CGATCGCC**

ATGCCCGCGCGTTCTCTGGTGAAGAAGCCGTGCGTCTCCACGTGCAAGAGGAACTGGAGCGAGCTCCCCG
 ACGAGGAGCGGGCGAGATCTACGTGCCAGTCAGCCTGGGCTTCTGCCACCACAGCCCTACCGGGAGCC
 GGAACCCTCTGTGGCCGAACCCCTTCTGCCCGCTGGCTTTGAACATGAGCCTTCGAGACTCTAGCTAC
 AGCATGGCCCCCGGCCCTGTGTGGTGGCCAGCTGCCCTCTGAAGACATGGGCCACTTGACAGACCCCC
 AGAGCAGAGACCATGGCTTCTGCGCACCAAGATGAAGGTGACCCTTGGGGACAGTCCCAGTGGAGACCT
 GTTCACCTGCCGTGTCTGCCAGAAGGCCTTACCTACCAGCGCATGCTGAACCGCCACATGAAGTGTAC
 AACGACGTCAAGAGGCACCTCTGCACGTACTGCGGAAGGGCTTCAATGACACCTTCGACCTCAAGAGAC
 ACGTCCGAACTCACACTGGCGTGCAGCCCTACAAGTGCAGCCTGTGTGACAAGGCCTTCACGCAGCGCTG
 CTCTCTGGAGTCTCACCTCAAGAAGATCCATGGTGTGCAGCAGAAGTACGCGTACAAGGAGCGGGCGGCC
 AAGCTGTACGTGTGTGAGGAGTGCAGCTGCACATCTGAGAGCCAGGAGGGCCACGTCCTGCACCTGAAGG
 AGCACCACCTGACAGCCCGTCTGCGCAAGACCTCCAAGAAGGTGGCCGTGGCCACTACAGAACACTGT
 CACTTCCCTGCTGCAGGGCAGCCCCACCTG

AGCGGACCGACGCGTACGCGGCCGCTCGAG - GFP Tag - GTTTAA



[View online »](#)

Protein Sequence: >RG209316 representing NM_004561
 Red=Cloning site Green=Tags(s)

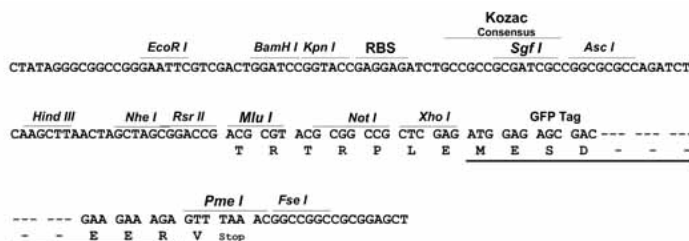
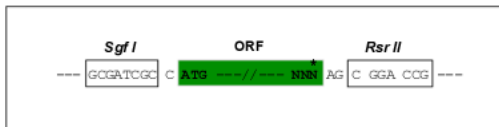
MPRAFLVKKPCVSTCKRNWSELPEERGEIYVPVSLGFCPPQPYREPEPSVAEPPSCPLALNMSLRDSSY
 SMAPGPCVVAQLPSEDMGHLDTPQSRDHGFLRTKMKVTLGDSPSGDLFTCRVCQKAFTYQRMLNRHMKCH
 NDVKRHLCTYCGKGFNDTFDLKRHVTRHTGVRPYKCSLCKAFTQRCSLSEHLKKIHGVQQKYAYKERRA
 KLYVCEECCGCTSESQEGHVLHLKEHHPDSPLLRKTSKKVAVALQNTVTSLQLQGSPLH

SGPTRRRLE - GFP Tag - V

Restriction Sites: SgfI-RsrII

Cloning Scheme:

Cloning sites used for ORF Shutting:



ACCN: NM_004561

ORF Size: 801 bp

OTI Disclaimer: The molecular sequence of this clone aligns with the gene accession number as a point of reference only. However, individual transcript sequences of the same gene can differ through naturally occurring variations (e.g. polymorphisms), each with its own valid existence. This clone is substantially in agreement with the reference, but a complete review of all prevailing variants is recommended prior to use. [More info](#)

OTI Annotation: This clone was engineered to express the complete ORF with an expression tag. Expression varies depending on the nature of the gene.

Components: The ORF clone is ion-exchange column purified and shipped in a 2D barcoded Matrix tube containing 10ug of transfection-ready, dried plasmid DNA (reconstitute with 100 ul of water).

Reconstitution Method:

1. Centrifuge at 5,000xg for 5min.
2. Carefully open the tube and add 100ul of sterile water to dissolve the DNA.
3. Close the tube and incubate for 10 minutes at room temperature.
4. Briefly vortex the tube and then do a quick spin (less than 5000xg) to concentrate the liquid at the bottom.
5. Store the suspended plasmid at -20°C. The DNA is stable for at least one year from date of shipping when stored at -20°C.

Note: Plasmids are not sterile. For experiments where strict sterility is required, filtration with 0.22um filter is required.

RefSeq: [NM_004561.4](#)

RefSeq Size: 3007 bp

RefSeq ORF: 804 bp

Locus ID: 5017

UniProt ID: [O14753](#)

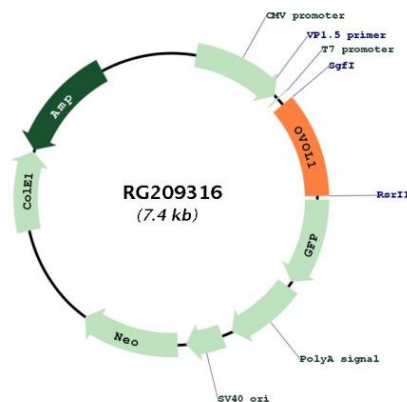
Cytogenetics: 11q13.1

Domains: zf-C2H2

Protein Families: Druggable Genome, Transcription Factors

Gene Summary: This gene encodes a putative zinc finger containing transcription factor that is highly similar to homologous protein in Drosophila and mouse. Based on known functions in these species, this protein is likely involved in hair formation and spermatogenesis in human as well. [provided by RefSeq, Aug 2011]

Product images:



Circular map for RG209316