

## Product datasheet for **RG209313**

### ZDHHC18 (NM\_032283) Human Tagged ORF Clone

#### Product data:

Product Type:	Expression Plasmids
Product Name:	ZDHHC18 (NM_032283) Human Tagged ORF Clone
Tag:	TurboGFP
Symbol:	ZDHHC18
Synonyms:	DHHC-18; DHHC18
Mammalian Cell Selection:	Neomycin
Vector:	pCMV6-AC-GFP (PS100010)
E. coli Selection:	Ampicillin (100 ug/mL)
ORF Nucleotide Sequence:	>RG209313 representing NM_032283 Red=Cloning site Blue=ORF Green=Tags(s)

TTTTGTAATACGACTCACTATAGGGCGGCCGGAATTCGTCGACTGGATCCGGTACCGAGGAGATCTGCC  
GCC**CGATCGCC**

ATGAAGGACTGCGAGTACCAGCAGATCAGCCCCGGGGCCGCCCGCTGCCCGCTCCCCGGGGGCGCGCC  
GTCCCGCCCCCGCGCGTCCCCGACTCCGGGCCCGGGCCCGCGCCCGCCCGCCCCCGCCCCGCGCG  
CTGGAGCAGCAGCGGCAGCGGCAGCGGCAGCGGGAGCGGGAGCCTCGGCCCGCCACGGCGCAAGTGG  
GAGGTGTTCCCGGTGCAATCGCTTCTACTGCGGCGCCGCCTCATGCTGGCCGGCCACGGCGCGTCT  
TCGCGCTCAGCTGCTGCTCATCTCACCACCACCGCCCTTCTTCGTCTTTGACTGTCCCTACCTGGC  
TCGCAAGCTGACCTTGCCATCCCCATCATCGCTGCCATCCTCTTCTTTCGTGATGAGCTGCCTGCTG  
CAGACAAGCTTACCGACCTGGGATCCTGCCCGGGCCACTGTCTGTGAAGCAGCCGCCCTGGAGAAAC  
AGATCGACAACACAGGCAGTTCTACATACCGGCCACCCCTCGGACCCGGGAGGTGCTGATCAACGGGCA  
GATGGTGAAGCTGAAGTACTGCTTACCTGCAAGATGTTCCGGCCACCCCGAACCTCACACTGCAGTGTG  
TGCGACAAGTGTGTGGAACGATTTGACCATCACTGCCCTGGGTGGGCAACTGTGTGGGGAGACGGAACT  
ATCGCTTCTTCTACGCGTTTATTCTCTCCCTCTCATTCTGACGGCCTTCATCTTCGCTGTGTGGTAC  
CCACCTGACGTTGCGCGCTCAGGAAGCAACTTCTCTCACTCTGAAGGAGACACCAGCAAGCGTGTGCTG  
GAGTTGGTGATCTGTTCTTCTCCATCTGGTCCATTCTGGGCCTCTCAGGTTTTCACAGTACCTCGTGC  
CCTCCAACCTGACTACTAATGAAGACATCAAAGGCTCGTGGTCCAGCAAGAGGGGCGGTGAGGCCTCTGT  
CAACCCCTACAGCCATAAAAGTATTATACCAACTGCTGTGCTGTGCTCTGTGGCCCCCTACCTCCAGC  
CTAATTGACCGGAGGGGATTTGTGCAGTCCGACACCGTGTGCCCTACCCATCAGAAGCGATGAGCCAG  
CCTGCAGAGCCAAGCCTGATGCCAGCATGGTAGGAGGCCACCC

AGCGGACCGACGCGTACGCGGCCGCTCGAG - GFP Tag - GTTTAA



[View online »](#)

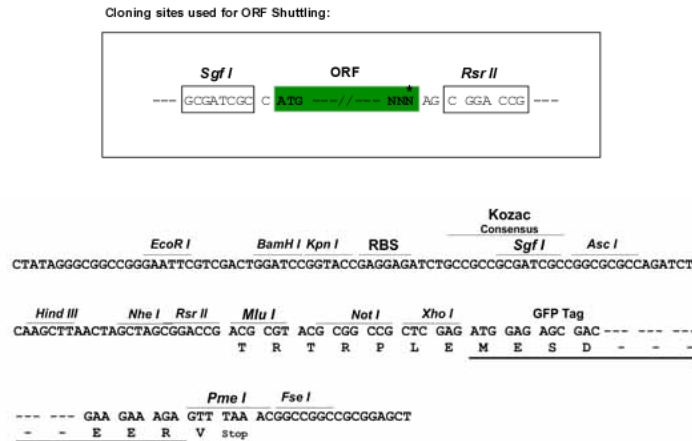
**Protein Sequence:** >RG209313 representing NM\_032283  
 Red=Cloning site Green=Tags(s)

MKDCEYQQISPGAAPLPASPGARRPGPAASPTPGPGPAPPAAPAPPRWSSSGSGSGSGSLGRRPRRW  
 EVFPGRRNFYCGRLMLAGHGGVFALLLLLILTTTGLFFVDCPYLARKLTLAIPIIAAIILFFVMSCLL  
 QTSFTDPGILPRATVCEAAALEKQIDNTGSSTYRPPRTREVLINGQMVKLKYCFCKMFRPRTSHCSV  
 CDNCVERFDHHCWPVWGNCVGRNRYRFFYAFILSLSFLTAFIFACVVTHLTLRAQGSNFLSTLKETPASVL  
 ELVICFFSIWSILGLSGFHTYLVASNLTTNEDIKGSWSSKRGGEASVNPYSHKSIITNCCAVALCGPLPPS  
 LIDRRGFVQSDTVLPSPIRSDEPACRAKPDASMVGHP

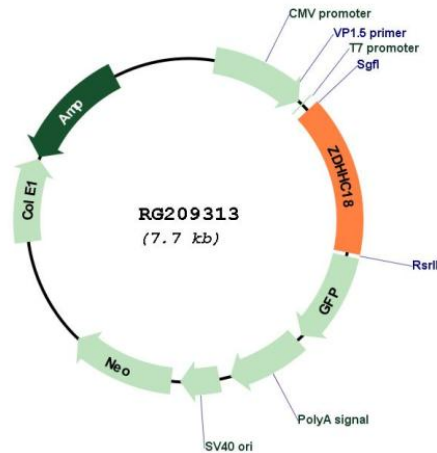
SGPTRRRLE - GFP Tag - V

**Restriction Sites:** SgfI-RsrII

**Cloning Scheme:**



**Plasmid Map:**



**ACCN:** NM\_032283

<b>ORF Size:</b>	1164 bp
<b>OTI Disclaimer:</b>	<p>Due to the inherent nature of this plasmid, standard methods to replicate additional amounts of DNA in E. coli are highly likely to result in mutations and/or rearrangements. Therefore, OriGene does not guarantee the capability to replicate this plasmid DNA. Additional amounts of DNA can be purchased from OriGene with batch-specific, full-sequence verification at a reduced cost. Please contact our customer care team at <a href="mailto:custsupport@origene.com">custsupport@origene.com</a> or by calling 301.340.3188 option 3 for pricing and delivery.</p> <p>The molecular sequence of this clone aligns with the gene accession number as a point of reference only. However, individual transcript sequences of the same gene can differ through naturally occurring variations (e.g. polymorphisms), each with its own valid existence. This clone is substantially in agreement with the reference, but a complete review of all prevailing variants is recommended prior to use. <a href="#">More info</a></p>
<b>OTI Annotation:</b>	This clone was engineered to express the complete ORF with an expression tag. Expression varies depending on the nature of the gene.
<b>Components:</b>	The ORF clone is ion-exchange column purified and shipped in a 2D barcoded Matrix tube containing 10ug of transfection-ready, dried plasmid DNA (reconstitute with 100 ul of water).
<b>Reconstitution Method:</b>	<ol style="list-style-type: none"> <li>1. Centrifuge at 5,000xg for 5min.</li> <li>2. Carefully open the tube and add 100ul of sterile water to dissolve the DNA.</li> <li>3. Close the tube and incubate for 10 minutes at room temperature.</li> <li>4. Briefly vortex the tube and then do a quick spin (less than 5000xg) to concentrate the liquid at the bottom.</li> <li>5. Store the suspended plasmid at -20°C. The DNA is stable for at least one year from date of shipping when stored at -20°C.</li> </ol>
<b>RefSeq:</b>	<a href="#">NM_032283.3</a>
<b>RefSeq Size:</b>	3163 bp
<b>RefSeq ORF:</b>	1167 bp
<b>Locus ID:</b>	84243
<b>UniProt ID:</b>	<a href="#">Q9NUE0</a>
<b>Cytogenetics:</b>	1p36.11
<b>Protein Families:</b>	Transcription Factors, Transmembrane
<b>Gene Summary:</b>	Has palmitoyltransferase activity towards HRAS and LCK.[UniProtKB/Swiss-Prot Function]