

Product datasheet for **RG209311**

GALNTL4 (GALNT18) (NM_198516) Human Tagged ORF Clone

Product data:

Product Type:	Expression Plasmids
Product Name:	GALNTL4 (GALNT18) (NM_198516) Human Tagged ORF Clone
Tag:	TurboGFP
Symbol:	GALNT18
Synonyms:	GalNAc-T15; GalNAc-T18; GALNACT18; GALNT15; GALNTL4
Mammalian Cell Selection:	Neomycin
Vector:	pCMV6-AC-GFP (PS100010)
E. coli Selection:	Ampicillin (100 ug/mL)



[View online »](#)

ORF Nucleotide Sequence:

>RG209311 representing NM_198516
 Red=Cloning site Blue=ORF Green=Tags(s)

TTTTGTAATACGACTCACTATAGGGCGGCCGGAATTCGTCGACTGGATCCGGTACCGAGGAGATCTGCC
 GCCGCGATCGCC

ATGGTGTGCACCAGGAAGACAAAACCTTTGGTGTCCACTTGCCTGATCCTGAGCGGCATGACTAACATCA
 TCTGCCTGCTCTACGTGGGCTGGGTCAACCACTACATCGCCAGCGTGTATGTGCGGGGAGGAGCCGGC
 GCCCGACAAGAAGCTGGAGGAAGACAAAGGGGACACTCTGAAGATTATTGAGCGGCTGGACCACCTGGAG
 AATGTCATCAAGCAGCACATTCAAGAGGCTCTGCCAAGCCTGAGGAGGCAGAGGCCGAGCCCTTACAG
 ACTCCTCTCTGTTTGCACACTGGGGCCAGGAGCTCAGCCCCGAAGGCCGGCGCTGGCCCTGAAGCAATT
 CCAGTACTACGGCTACAACGCCTACCTCAGCGACCGCCTGCCCTGGACCGGCCCTGCCTGACCTCAGA
 CCCAGTGGGTGCCGTAACTCTCATTCTCAGAGCCTGCCAGAGGTGAGCATCGTGTTCATCTTCGTCA
 ATGAAGCGCTTTCAGTGTGCTGCGCTCCATCCACTCGGCCATGGAACGCACGCCCCACATCTGCTCAA
 GGAGATCATTCTGGTGGATGACAACAGCAGTAACGAGGAACTGAAGGAGAAGCTGACCGAATATGTGGAC
 AAGGTGAACAGCCAGAAGCCAGGCTTCATCAAAGTCGTGCGTCACAGCAAGCAGGAAGGCCCTCATCCGCT
 CCAGGGTCAGTGGCTGGAGGGCGGCCACTGCCCTGTGGTGGCACTCTTTGATGCCACGTGGAGTTCAA
 TGTGGGCTGGGCTGAACCTGTAACCCGCATCAAGGAGAACCAGGAGCGGATCATCTCGCCATCCTTT
 GATAACATCAAATATGACAACCTTGGAGTAGAAGAGTACCCGCTGGCTGCCAGGGCTTTGACTGGGAGC
 TGTGGTGGCGCTACCTAAATCCCCCAAGGCTGGTGGAAAGTGGAGAATCCACAGCGCAATCAGGAG
 CCCTGCCCTCATTGGCTGCTTATTGTGGACCGGCAGTACTTCCAGGAGATCGGCTGCTGGACGAAGGC
 ATGGAAGTCTACGGGGGCGAGAATGTGGAGCTGGGATCAGGGTGTGGCAGTGTGGCGGGAGTGGGAGG
 TCCTGCCCTGCTACGGATTGCCACATTGAGCGAGCCACAAGCCCTACACAGAGGACCTACCGCCCA
 TGTCGCGAGGAACGCTCTCAGGGTGGCTGAAGTCTGGATGGATGAATTTAAAAGCCACGCTACATGGCA
 TGAACATACCGCAGGAGGACTCAGGAATTGACATTGGGGACATCACTGCAAGGAAGGCTCTCAGAAAC
 AGCTGCAGTGCAAGACCTTCCGGTGGTACCTGGTCAAGCAGTGTACCCAGAGATGAGGATGACTCCGACAT
 CATTGCCATGGAGTGTGCAGAATTCTCTGAAGACTGATTTGTGCTTGACCAGGGGCCAGATACAGAG
 AATGTCCCATCATGTACATCTGCCATGGGATGACGCCTCAGAACGTGTACTACACGAGCAGTCAAGAGA
 TCCATGTGGGCATTCTGAGCCCCACCGTGGATGATGATGACAACCGATGCCTGGTGGACGTAACAGCCG
 GCCCGGCTCATCGAATGCAGCTACGCCAAAGCCAAGAGGATGAAGCTTCACTGGCAGTTCTCTCAGGGA
 GGACCCATCCAGAACCGAAGTCTAAGCGCTGTCTGGAGCTGCAGGAGAATAGCGACCTGGAGTTCCGCT
 TCCAGCTGGTGTGCAGAAGTCTCGGGCCAGCACTGGAGCATACCAACGTCCTGAGGAGCCTCGCGTC
 C

ACGCGTACGCGGCCGCTCGAG – GFP Tag – GTTTAA

Protein Sequence:

>RG209311 representing NM_198516
 Red=Cloning site Green=Tags(s)

MVCTRKTKLVSTCVILSGMTNIIICLLYVGVWNTYIASVYVRGQEPAPDKKLEEDKGDTLKIIERLDHLE
 NVIKQHIQEAPAKPEEAEAEPTDSSLFAHWGQEL SPEGRRVALKQFQYYGYNAYLSDRLPLDRPLDLR
 PSGCRNLSFPDSLPEVSIVFIFVNEALSVLLRSIHSAMERTPPHLLKEIILVDDNSSNEELKEKLEYVD
 KVNQKPGFIKVRHRSKQEGLI RSRVSGWRAATAPVVALFDAHVEFNVGWAEPVL TRIKENRKRIISPSF
 DNIKYDNFEIEEYPLAAQFDWELWCRYLNPPKAWWKLNSTAPIRSPALIGCFIVDRQYFQEIGLLDEG
 MEVYGGENVELGIRVWQCGGSVEVLPCSRIAHIERAHKPYTEDLTAHVRNALRVAEVMDEFKSHVYMA
 WNIPQEDSGIDIGDITARKALRKQLQCKTFRWYLVSVYPEMRMYSIIAYGVLQNSLKTDLCLDQGPDE
 NVPIMYICHGMTPNVYITSSQIHWGILSPTVDDDDNRLVDVNSRPRLIECSYAKAKRMKLHWQFSQ
 GPIQNRKSKRCLLQENSDFEFGFLVLQKCSGQHSITNVLRLSLAS

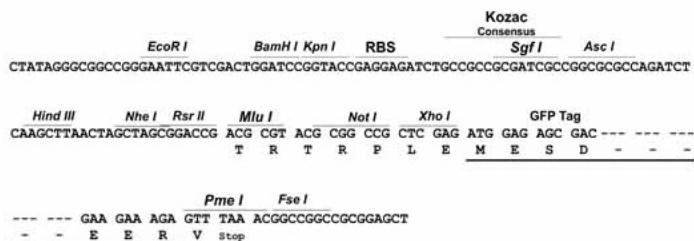
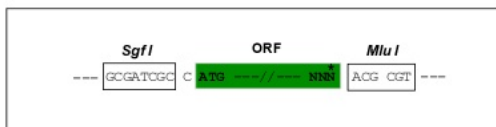
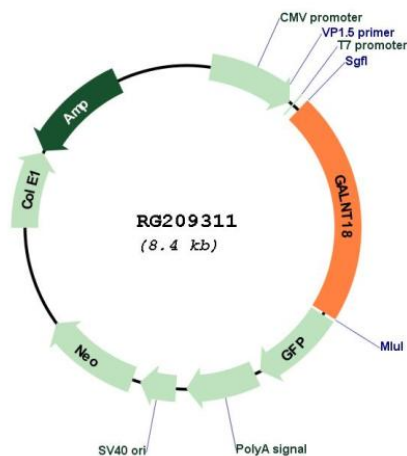
TRTRPLE – GFP Tag – V

Restriction Sites:

Sgfl-MluI

Cloning Scheme:

Cloning sites used for ORF Shutting:


Plasmid Map:


ACCN: NM_198516
 ORF Size: 1821 bp

OTI Disclaimer:	The molecular sequence of this clone aligns with the gene accession number as a point of reference only. However, individual transcript sequences of the same gene can differ through naturally occurring variations (e.g. polymorphisms), each with its own valid existence. This clone is substantially in agreement with the reference, but a complete review of all prevailing variants is recommended prior to use. More info
OTI Annotation:	This clone was engineered to express the complete ORF with an expression tag. Expression varies depending on the nature of the gene.
Components:	The ORF clone is ion-exchange column purified and shipped in a 2D barcoded Matrix tube containing 10ug of transfection-ready, dried plasmid DNA (reconstitute with 100 ul of water).
Reconstitution Method:	<ol style="list-style-type: none">1. Centrifuge at 5,000xg for 5min.2. Carefully open the tube and add 100ul of sterile water to dissolve the DNA.3. Close the tube and incubate for 10 minutes at room temperature.4. Briefly vortex the tube and then do a quick spin (less than 5000xg) to concentrate the liquid at the bottom.5. Store the suspended plasmid at -20°C. The DNA is stable for at least one year from date of shipping when stored at -20°C.
RefSeq:	NM_198516.3
RefSeq Size:	2531 bp
RefSeq ORF:	1824 bp
Locus ID:	374378
UniProt ID:	Q6P9A2
Cytogenetics:	11p15.4
Protein Families:	Transmembrane
Protein Pathways:	Metabolic pathways, O-Glycan biosynthesis
Gene Summary:	Catalyzes the initial reaction in O-linked oligosaccharide biosynthesis, the transfer of an N-acetyl-D-galactosamine residue to a serine or threonine residue on the protein receptor. [UniProtKB/Swiss-Prot Function]