

## Product datasheet for **RG209310**

### DERL3 (NM\_001002862) Human Tagged ORF Clone

#### Product data:

Product Type:	Expression Plasmids
Product Name:	DERL3 (NM_001002862) Human Tagged ORF Clone
Tag:	TurboGFP
Symbol:	DERL3
Synonyms:	C22orf14; derlin-3; IZP6; LLN2
Mammalian Cell Selection:	Neomycin
Vector:	pCMV6-AC-GFP (PS100010)
E. coli Selection:	Ampicillin (100 ug/mL)
ORF Nucleotide Sequence:	>RG209310 representing NM_001002862 Red=Cloning site Blue=ORF Green=Tags(s)

TTTTGTAATACGACTCACTATAGGGCGCCGGGAATTCGTCGACTGGATCCGGTACCGAGGAGATCTGCC  
GCC**CGATCGCC**

ATGGCGTGGCAGGGACTAGCGGCCGAGTTCCTGCAGGTGCCGGGTGACGCGGGCTTACACCGCAGCCT  
GTGTCCTCACCACCGCCGCGGTGCAGCTGGAGCTCCTCAGCCCTTTCAACTCTACTTCAACCCGACCT  
TGTGTTCCGGAAGTTCAGGTCTGGAGGCTCGTACCAACTTCTCTTCTCGGGCCCTGGGATTCAGC  
TTCTTCTCAACATGCTTTCGTGTTCCGCTACTGCCGATGCTGGAAGAGGGCTCCTCCGCGGCCGCA  
CGGCCGACTTCGTCTTCATGTTTCTCTCGGGGCGTCTTATGACCCTGCTGGGACTCCTGGGCAGCCT  
GTTCTTCTGGCCAGGCCCTCATGGCCATGCTGGTGTACGTGTGGAGCCGCCGAGCCCTCGGGTGAGG  
GTCAACTTCTTCGGCCTGCTCACTTCCAGGCACCGTTCTGCCTTGGGCGCTCATGGGCTTCTCGTGC  
TGCTGGGCAACTCCATCCTCGTGGACCTGCTGGGATTGCGGTGGGCCATATCTACTACTTCTGGAGGA  
CGTCTTCCCAACCAGCCTGGAGGCAAGAGGCTCCTGCAGACCCCTGGCTTCTAAAGCTGCTCCTGGAT  
GCCCTGCAGAAGACCCCAATTACCTGCCCTCCCTGAGGAACAGCCAGGACCCCATCTGCCACCCCGC  
AGCAG

**ACGCGT**ACGCGGCCGCTCGAG - GFP Tag - GTTTAA



[View online »](#)

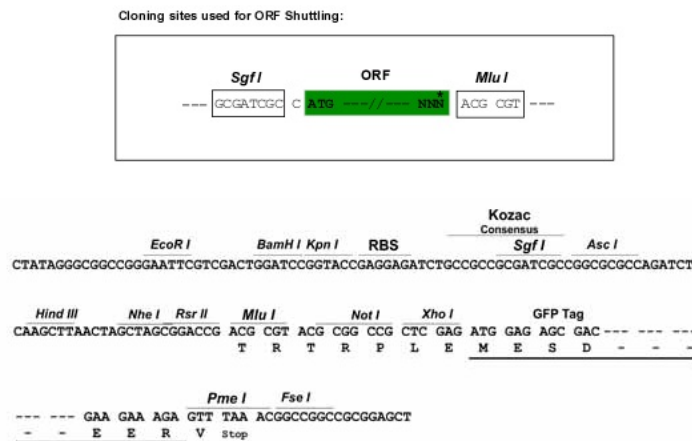
**Protein Sequence:** >RG209310 representing NM\_001002862  
 Red=Cloning site Green=Tags(s)

MAWQGLAAEFLQVPAVTRAYTAACVLTTAAVQLELLSPFQLYFNPHLVFRKFQVWRLVTNFLFFGPLGFS  
 FFFNMLFVFRYCRMLEEGSFRGRTADFVFMFLFGGVLMTLLGLLGSLFFLGQALMAMLVYWSRRSPRVR  
 VNFFGLLTFQAPFLPWALMGFSLLLGNSILVDLLGIAVGHIYYFLEDVFPNQPGGKRLQTPGFLKLLLD  
 APAEDPNYLPLPEEQPGPHLPPPQQ

TRTRPLE - GFP Tag - V

**Restriction Sites:** SgfI-MluI

**Cloning Scheme:**



**ACCN:** NM\_001002862

**ORF Size:** 705 bp

**OTI Disclaimer:** The molecular sequence of this clone aligns with the gene accession number as a point of reference only. However, individual transcript sequences of the same gene can differ through naturally occurring variations (e.g. polymorphisms), each with its own valid existence. This clone is substantially in agreement with the reference, but a complete review of all prevailing variants is recommended prior to use. [More info](#)

**OTI Annotation:** This clone was engineered to express the complete ORF with an expression tag. Expression varies depending on the nature of the gene.

**Components:** The ORF clone is ion-exchange column purified and shipped in a 2D barcoded Matrix tube containing 10ug of transfection-ready, dried plasmid DNA (reconstitute with 100 ul of water).

**Reconstitution Method:**

1. Centrifuge at 5,000xg for 5min.
2. Carefully open the tube and add 100ul of sterile water to dissolve the DNA.
3. Close the tube and incubate for 10 minutes at room temperature.
4. Briefly vortex the tube and then do a quick spin (less than 5000xg) to concentrate the liquid at the bottom.
5. Store the suspended plasmid at -20°C. The DNA is stable for at least one year from date of shipping when stored at -20°C.

**RefSeq:** [NM\\_001002862.3](#)

**RefSeq Size:** 3116 bp

**RefSeq ORF:** 708 bp

**Locus ID:** 91319

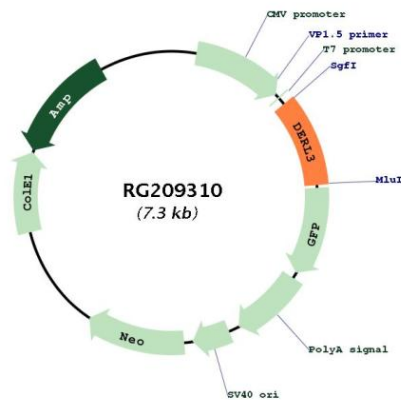
**UniProt ID:** [Q96Q80](#)

**Cytogenetics:** 22q11.23

**Protein Families:** Transmembrane

**Gene Summary:** The protein encoded by this gene belongs to the derlin family, and resides in the endoplasmic reticulum (ER). Proteins that are unfolded or misfolded in the ER must be refolded or degraded to maintain the homeostasis of the ER. This protein appears to be involved in the degradation of misfolded glycoproteins in the ER. Several alternatively spliced transcript variants encoding different isoforms have been identified for this gene. [provided by RefSeq, Oct 2008]

**Product images:**



Circular map for RG209310