

Product datasheet for **RG209307**

C3orf39 (POMGNT2) (NM_032806) Human Tagged ORF Clone

Product data:

Product Type:	Expression Plasmids
Product Name:	C3orf39 (POMGNT2) (NM_032806) Human Tagged ORF Clone
Tag:	TurboGFP
Symbol:	C3orf39
Synonyms:	AGO61; C3orf39; GTDC2; MDDGA8; MDDGC8
Mammalian Cell Selection:	Neomycin
Vector:	pCMV6-AC-GFP (PS100010)
E. coli Selection:	Ampicillin (100 ug/mL)



[View online »](#)

ORF Nucleotide Sequence:

>RG209307 representing NM_032806
 Red=Cloning site Blue=ORF Green=Tags(s)

TTTTGTAATACGACTCACTATAGGGCGGCCGGAATTCGTCGACTGGATCCGGTACCGAGGAGATCTGCC
 GCC**CGCATCGCC**

ATGCACCTCTCGCGGTGTTCAACGCCCTCTGGTGTGCTGGCAGCGGTCTGTGGAAGCATGTGC
 GGCTGCGTGAGCATGCAGCCACACTGGAGGAGGAGCTGGCCCTCAGCCGACAGGCCACAGAGCCAGCCCC
 AGCACTGAGGATCGACTACCCGAAGGCACTGCAGATCCTGATGGAGGGCGGCACACACATGGTGTGCACG
 GGCCGCACGCACAGACCCGATCTGCCGCTTCAAGTGGCTCTGCTACTCCAACGAGGCTGAGGAGTTCA
 TCTTCTTCCATGGCAACACCTCTGTCTGCTGCCAACCTGGGCTCCCGCGCTTCCAGCCAGCCCTGCT
 CGACCTATCCACCGTGGAGGACCACAACACTCAGTACTTCAACTTCGTGGAGCTGCCTGCTGCTGCCCTG
 CGTTCATGCCAAGCCGGTGTTCGTGCCAGACGTGGCCCTCATCGCAACCGCTTCAACCCCGACAACC
 TCATGCACGTCTTTCATGACGACCTGCTGCCACTTCTACACCTCGCGCAGTTTCCCGCCTGGCCCA
 CGAGGCACGGCTCTTCTCATGGAGGGTGGGGCGAGGGTGCACACTTCGACCTTACAAGCTGCTCAGC
 CCCAAGCAGCCTCTCTCGCGGCACAGCTGAAGACCTGGGCCGGCTGCTGTGCTTCTCCATGCTTTTG
 TGGCCTCTCAAGATCACTACCTGGTACCAGTATGGCTTTGTGCAGCCCCAGGGCCCGAAGGCCAACAT
 CCTCGTCTCAGGCAATGAGATCCGGCAGTTTGCACGGTTCATGACAGAAAAGCTGAACGTGAGCCACACA
 GGAGTCCCCCTAGGCGAGGAGTACATTTGGTCTTTAGCCGAACCCAGAACAGACTCATTCTGAATGAGG
 CAGAGTGTCTGCTGGCACTGGCCAGGAGTCCAGATGAAGACAGTGACAGTGTCCCTGGAGGACCACAC
 CTTTGTGATGTCTGCGGCTGGTCAGCAATGCCTCCATGCTGGTTCAGCATGCATGGGGCCAGCTGGTC
 ACCACCTCTTCTGCCCCGTGGGGCAACTGTGGTAGAGCTTCCCATATGCTGTCAATCCCGACCACT
 ACACCTTATAAGACGCTGGCCATGCTGCCTGGCATGGACCTCCAGTATGTAGCCTGGCGAATGATGAT
 GCCAGAGAACACAGTCAACACCCCTGAGCGGCCCTGGGATCAGGGGGGCATCACCCATCTGGACCGGCT
 GAGCAAGCCCGTATCTGCAAAGCCGTGAGGTCCACGGCATCTCTGTTGCCGGAACCCGAGTGGCTCT
 TCCGAATCTACCAGGACACCAAGGTGGACATCCCATCCCTCATTCAAACCATACGGCGCGTGGTGAAGGG
 CCGGCCAGGACCAGGAAGCAGAAGTGGACAGTCCGCTATATCCAGGCAAGGTGCGGGAGGACCGGTGC
 CAGGGCTCAGTGCATGGCGCTCCGAGGCCCGCTCACTGTCTCCTGGCAGATCCCATGGAACCTTAAAT
 ACCTGAAGGTGAGGGAGGTGAAGTACGAGGTGTGGCTGCAGGAGCAGGGGGAGAACCTACGTGCCTTA
 CATCTGGCTCTGCAGAACCACCTTCACTGAGAATCAAGCCCTTACCACCTACCTGGTGTGGGTC
 CGTGCATCTTCAACAAGATCCTCTGGGACCCCTTGCAGATGTGCTGGTGTGCAACACG

ACGCGTACGCGGCCGCTCGAG - GFP Tag - GTTTAA

Protein Sequence:

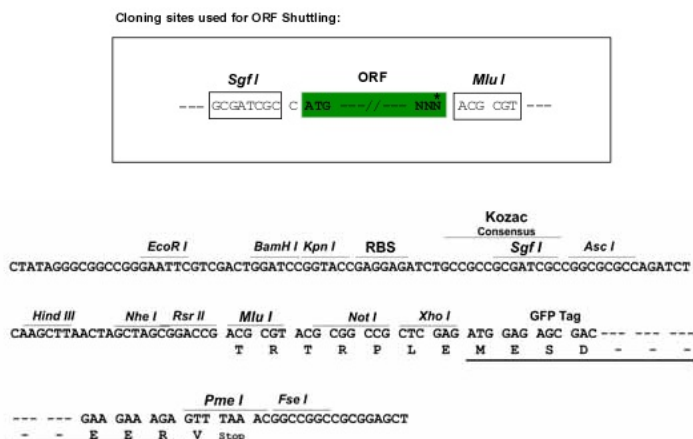
>RG209307 representing NM_032806
 Red=Cloning site Green=Tags(s)

MHLSAVFNALLVSVLAAVLWKHVRLREHAATLEEELALSRQATEPAPALRIDYPKALQILMEGGTHMVCT
 GRTHTDRICRFKWL CYSNEAEFFIFFHGNTSVMLPNLGSRRFPALLDLSTVEDHNTQYFNFVELPAAAL
 RFMPKPVFVPDVALIANRFNPDNLMHVFHDDLPLFYTLRQFPGLAHEARLFFMEGWGEGAHFDLYKLLS
 PKQPLLRAQLKTLGRLLCFSHAFVGLSKITTWYQYGFVQPQGPKANILVSGNEIRQFARFMTEKLNVSHT
 GVPLGEEYILVFSRTQNRLILNEAELLLAQEFQMKTVTVSLEDHTFADVVRVLSNASMLVSMHGAQLV
 TTLFLPRGATVVELFPYAVNPDHYTPYKTLAMLPGMDLQYVAWRNMPENTVTHPERPWDQGGITHLDRA
 EQARILQSREVPRLCCRNPEWLFRIYQDTKVDIPSLIQTIRRVVKGRPGPRKQKWTVGLYPGKVREARC
 QASVHGASEARLTVSWQIPWNLKYLKVREVKYEVWLQEQGENTYVPYILALQNHTFTENIKPFTTYLVVW
 RCIFNKILLGPFADVLVCNT

TRTRPLE - GFP Tag - V

Restriction Sites:

Sgfl-MluI

Cloning Scheme:


ACCN: NM_032806

ORF Size: 1740 bp

OTI Disclaimer: The molecular sequence of this clone aligns with the gene accession number as a point of reference only. However, individual transcript sequences of the same gene can differ through naturally occurring variations (e.g. polymorphisms), each with its own valid existence. This clone is substantially in agreement with the reference, but a complete review of all prevailing variants is recommended prior to use. [More info](#)

OTI Annotation: This clone was engineered to express the complete ORF with an expression tag. Expression varies depending on the nature of the gene.

Components: The ORF clone is ion-exchange column purified and shipped in a 2D barcoded Matrix tube containing 10ug of transfection-ready, dried plasmid DNA (reconstitute with 100 ul of water).

Reconstitution Method:

1. Centrifuge at 5,000xg for 5min.
2. Carefully open the tube and add 100ul of sterile water to dissolve the DNA.
3. Close the tube and incubate for 10 minutes at room temperature.
4. Briefly vortex the tube and then do a quick spin (less than 5000xg) to concentrate the liquid at the bottom.
5. Store the suspended plasmid at -20°C. The DNA is stable for at least one year from date of shipping when stored at -20°C.

Note: Plasmids are not sterile. For experiments where strict sterility is required, filtration with 0.22um filter is required.

RefSeq: [NM_032806.4](#), [NP_116195.2](#)

RefSeq Size: 2556 bp

RefSeq ORF: 1743 bp

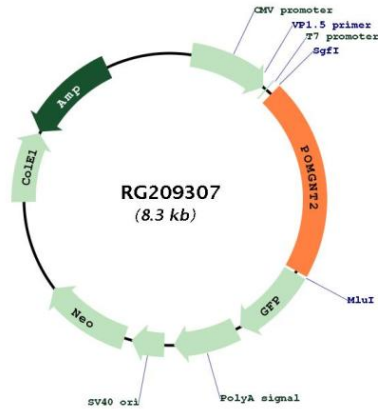
Locus ID: 84892

UniProt ID: [Q8NAT1](#)

Cytogenetics: 3p22.1

Gene Summary: This gene encodes a protein with glycosyltransferase activity although its function is not currently known. [provided by RefSeq, Sep 2012]

Product images:



Circular map for RG209307