

Product datasheet for **RG209275**

BACH1 (NM_001186) Human Tagged ORF Clone

Product data:

Product Type:	Expression Plasmids
Product Name:	BACH1 (NM_001186) Human Tagged ORF Clone
Tag:	TurboGFP
Symbol:	BACH1
Synonyms:	BACH-1; BTBD24
Mammalian Cell Selection:	Neomycin
Vector:	pCMV6-AC-GFP (PS100010)
E. coli Selection:	Ampicillin (100 ug/mL)



[View online »](#)

ORF Nucleotide Sequence:

>RG209275 representing NM_001186
 Red=Cloning site Blue=ORF Green=Tags(s)

TTTTGTAATACGACTCACTATAGGGCGGCCGGAATTCGTGCGACTGGATCCGGTACCGAGGAGATCTGCC
 GCC**CGCATCGCC**

ATGTCTCTGAGTGAGAACTCGGTTTTTGCCTATGAATCTTCTGTGCATAGCACCAATGTTTTACTCAGCC
 TTAATGACCAGCGGAAGAAAGATGTGCTGTGCGATGTCACCATCTTTGTGGAGGGACAGCGGTTCCGCGC
 TCACCGGTCCGTGCTGGCGGCATGCAGCAGTTACTTCCAATCAAGAATCGTAGGCCAGGCTGATGGAGAG
 CTGAACATTACTTTCCAGAAGAGGTGACAGTTAAAGGATTTGAACCTTTAATTCAGTTTGCCTACACTG
 CTAAACTGATTTAAGTAAAGAGAATGTGGATGAAGTGTGCAAAATGTGTGGAGTTTTAAGTGTACATAA
 TATTGAGGAATCTGCTTTCAGTTTCTGAAATTTAAGTTTTGGACTCCACTGCAGACCAGCAAGAATGC
 CCAAGAAAAAATGCTTTTCATCACACTGTCAGAAAACAGACCTAAACTTTCACTTTTGGACCAGAGGG
 ATCTAGAACTGATGAAGTGGAGGAATTTCTGGAAAATAAAAATGTTTCAGACTCCTCAGTGTAACTCCG
 CAGGTATCAAGGAAATGCAAAAGCCTCACCTCTACAAGACAGTGCCAGTCAGACATATGAGTCCATG
 TGCTTAGAGAAGGATGCTGCTCTGGCCTTGCTTCTTTATGCCCAAATACAGAAAATCCAAAAAGCAT
 TTGAACTGCAGAGTCCGTAAGTGGGAAATCTAGTGTCAAAGACATTCATGCTTCTGTTACGCCAAATGA
 AAGGTCTGAAAATGAATGCCTGGGAGGAGTCCCGGAGTGTAGAGATTTGCAGGTGATGTTAAAATGTGAC
 GAAAGTAAATTAGCAATGGAACCTGAAGAAACGAAGAAAGATCCTGCTTCTCAGTGCCCAACTGAAAAAT
 CAGAAGTGACTCCTTTCCCCACAATTTCTCCATAGACCTCATGGACTTTATTTCTTTGTCTTTTTACA
 CACATATGACCAATATGGTGACTTGAATTTTGTGGTATGCAAAACACAACAGTGTAAACAGAAAAGCCT
 TTGTCAGGTACAGACGTCCAAGAAAAACATTTGGTAAAAGTCAAGATTTACCTTTGAAATCCGACTTGG
 GCACCAGGAAGATAGTAGTGTTCATCTAGTGATAGGAGTAGTGTGGAGCGAGAAGTGGCAGAACACCT
 AGCAAAAAGGCTTCTGGAGTGACATTTGCAGCACGGACACTCCTTGCCAAATGCAGTTATCACCTGCTGTG
 GCCAAAGATGGCTCAGAACAGATCTCACAGAAACGGTCTGAGTGTCCGTGGTTAGGTATCAGGATTAGTG
 AGAGCCCAGAACCAGGTCAAAGGACTTTCAACAATTAAGTTCTGTCAACTGCCCTTTTATAAGTACTCT
 GAGTACTGAAGGCTGTTCAAGCAATTTGGAAATTTGAAACGATGATTATGTTTCAGAACCCAGCAAGAA
 CCTTGCCCATATGCTTGTGTCATTAGCTTGGGAGACGACTCTGAGACGGACACCGAAGGAGACAGTGAAT
 CCTGTTACGCCAGAGAACAAGAATGTGAGGTAAAAGTCCATTCATGCACAACGGATAATTTCACTGTC
 TCGAAATGATTTTCAGTCTTGTGAAATGCACAAGCTTACTCCAGAACAGCTGGATTGTATCCATGAT
 ATTCGAAGAAGAAGTAAAACAGAATTGCTGCACAGCGCTGTGCAAGAGAAAATTGACTGTATACAGA
 ATCTTGAATCAGAAATTGAGAAGCTGCAAAGTAAAAGGAGAGCTTGTGAAAGGAAAGAGATCACATTTT
 GTCAACTCTGGGTGAGACAAAGCAGAACCTAACTGGACTTTGCCAGAAAGTTTGTAAAGAAGCAGCTCTG
 AGTCAAGAACAAATACAGATACTCGCAAGTACTCAGCTGCAGATTGCCCACTTTCAATTTTAAATTTCTG
 AAAAAGATAAAAGTACTCCTGATGGTGAAGTGGCGTTACCATCAATTTTCAGTTTATCTGACCGGCTCC
 AGCAGTGTGCTCCCTGTGCCAGAGGAAACAGTGAAGCTGGCTACGCGCGAGGGCAGGAGTCCCAGCAG
 ATGTCCACAGCCACCTCTGAGCAAGCTGGGCTGCGGAACAGTGTGTCAGAGTGGTGGGATCTCAGATT
 TCTGTCAGCAGATGACTGATAAATGTAAGTACTACTGATGAG

ACGCGTACGCGGCCGCTCGAG – GFP Tag – GTTTAA

Protein Sequence: >RG209275 representing NM_001186
 Red=Cloning site Green=Tags(s)

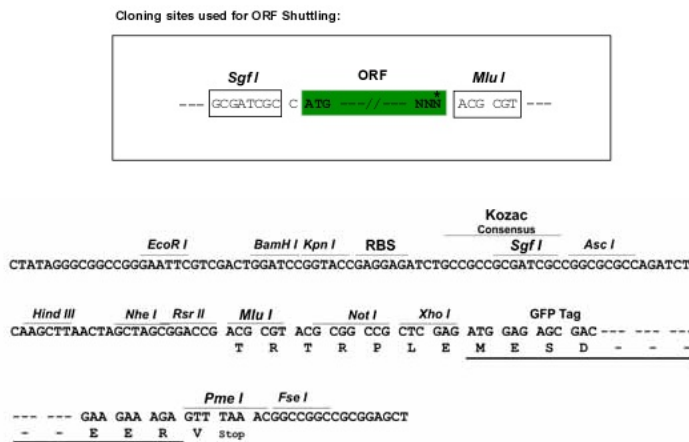
```

MSLSENSVFAYESSVHSTNVLLSLNDQRKKDVLCDVTIFVEGQRFRAHRSVLAACSSYFHSRIVGQADGE
LNITLPEEVTVKGFEP LIQFAYTAKLILSKENVDEVCKCVEFLSVHNIIEESCFQLKFKFLDSTADQQEC
PRKKCFSSHQCQKTDLKL SLLDQRDLETDEVEEFLENKNVQTPQCKLRRYQGNAKASPLQDSASQTYESM
CLEKDAALALPSLCPKYRKFQKAFGTDRTGESSVKDIHASVQPNERSENECLGGVPECRDLQVMLKCD
ESKLAMEPEETKKDPASQCPTKESEVTPFPHNSSIDPHGLYSLLSLLHTYDQYGD LNFAGMQNTTVL TEKP
LSGTDVQEKTFGESQDLPLKSDLGTREDSVASSDRSSVEREVAEHLAKGFWSDICSTDTPCQMQLSPAV
AKDGSEQISQKRSECPWLGIRISESPEPGQRTFTLSSVNCPISTLSTEGCSSNLEIGNDDYVSEPQQE
PCPYACVISLGDSETDTEGDSESCSAREQECEVKLPFNAQRIISL SRNDFQSL LKMHKL TPEQLDCIHD
IRRRSKNRIAAQRCRKRKLD CIQNL ESEIEKLQSEKESLLKERD HILSTLGETKQNL TGLCQKVCKEAAAL
SQEQIQILAKYSAADCPLSFLISEKDKSTPDGELALPSIFSLSDRPPAVLPPCARGNSEPGYARGQESQQ
MSTATSEQAGPAEQCRQSGGISDFCQQMTDKCTTDE
  
```

TRTRPLE - GFP Tag - V

Restriction Sites: SgfI-MluI

Cloning Scheme:



ACCN: NM_001186

ORF Size: 2208 bp

OTI Disclaimer: The molecular sequence of this clone aligns with the gene accession number as a point of reference only. However, individual transcript sequences of the same gene can differ through naturally occurring variations (e.g. polymorphisms), each with its own valid existence. This clone is substantially in agreement with the reference, but a complete review of all prevailing variants is recommended prior to use. [More info](#)

OTI Annotation: This clone was engineered to express the complete ORF with an expression tag. Expression varies depending on the nature of the gene.

Components: The ORF clone is ion-exchange column purified and shipped in a 2D barcoded Matrix tube containing 10ug of transfection-ready, dried plasmid DNA (reconstitute with 100 ul of water).

Reconstitution Method:

1. Centrifuge at 5,000xg for 5min.
2. Carefully open the tube and add 100ul of sterile water to dissolve the DNA.
3. Close the tube and incubate for 10 minutes at room temperature.
4. Briefly vortex the tube and then do a quick spin (less than 5000xg) to concentrate the liquid at the bottom.
5. Store the suspended plasmid at -20°C. The DNA is stable for at least one year from date of shipping when stored at -20°C.

RefSeq: [NM_001186.4](#)

RefSeq Size: 5642 bp

RefSeq ORF: 2211 bp

Locus ID: 571

UniProt ID: [O14867](#)

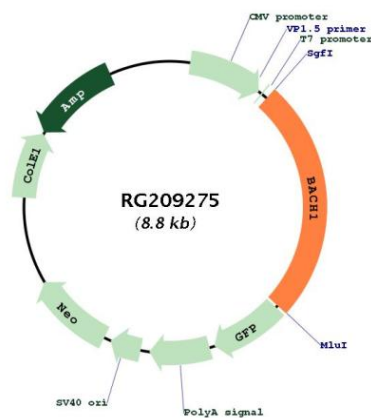
Cytogenetics: 21q21.3

Domains: BTB, BRLZ

Protein Families: Transcription Factors

Gene Summary: This gene encodes a transcription factor that belongs to the cap'n'collar type of basic region leucine zipper factor family (CNC-bZip). The encoded protein contains broad complex, tramtrack, bric-a-brac/poxvirus and zinc finger (BTB/POZ) domains, which is atypical of CNC-bZip family members. These BTB/POZ domains facilitate protein-protein interactions and formation of homo- and/or hetero-oligomers. When this encoded protein forms a heterodimer with MafK, it functions as a repressor of Maf recognition element (MARE) and transcription is repressed. Multiple alternatively spliced transcript variants have been identified for this gene. [provided by RefSeq, May 2009]

Product images:



Circular map for RG209275