

## Product datasheet for **RG209273**

### Cullin 5 (CUL5) (NM\_003478) Human Tagged ORF Clone

#### Product data:

Product Type:	Expression Plasmids
Product Name:	Cullin 5 (CUL5) (NM_003478) Human Tagged ORF Clone
Tag:	TurboGFP
Symbol:	Cullin 5
Synonyms:	CUL-5; VACM-1; VACM1
Mammalian Cell Selection:	Neomycin
Vector:	pCMV6-AC-GFP (PS100010)
E. coli Selection:	Ampicillin (100 ug/mL)



[View online »](#)

**ORF Nucleotide  
Sequence:**

>RG209273 representing NM\_003478  
 Red=Cloning site Blue=ORF Green=Tags(s)

TTTTGTAATACGACTCACTATAGGGCGGCCGGGAATTCGTCGACTGGATCCGGTACCGAGGAGATCTGCC  
 GCC**CGGATCGCC**

ATGGCGACGTCTAATCTGTTAAAGAATAAAGGTTCTCTCAGTTTGAAGACAAATGGGATTTTATGCGCC  
 CGATTGTTTTGAAGCTTTTACGCCAGGAATCTGTTACAAAACAGCAGTGGTTTGATCTGTTTTCCGATGT  
 GCATGCAGTCTGTCTTTGGGATGATAAAGGCCAGCAAAAATTCATCAGGCTTTAAAAGAAGATATTCTT  
 GAGTTTATTAAGCAGGCACAGGCACGAGTACTGAGCCATCAAGATGATACGGCTTTGCTAAAAGCATATA  
 TTGTTGAATGGCGAAAGTTCTTTACACAATGTGATATTTTACAAAACCTTTTTGTCAACTAGAGATTAC  
 TTTAATGGGTAACAGGGCAGCAATAAAAAATCAAAATGTGGAAGACAGTATTGTTGAAAGCTTATGCTT  
 GATACATGGAATGAGTCAATCTTTCAAACATAAAAAACAGACTCCAAGATAGTGAATGAAGCTGGTAC  
 ATGCTGAGAGATTGGGAGAAGCTTTTGATTCTCAGCTGGTTATTGGAGTAAGAGAATCCTATGTTAACT  
 TTGTTCTAATCCTGAGGATAAACTTCAAATTTATAGGGACAATTTGAGAAGGCATACTTGGATTCAACA  
 GAGAGATTTTATAGAACAAGCACCCCTCGTATTTACAACAAAATGGTGTACAGAATTATATGAAATATG  
 CAGATGCTAAATTAAGAAGAAGAAGAAAACGAGCACTACGTTATTTAGAAAACAAGACGAGAATGTA  
 ACTC  
 CGTTGAAGCACTCATGGAATGCTGTGTAATGCCTGGTGACATCATTTAAAGAGACTATCTTAGCTGAG  
 TGCCAAGGCATGATCAAGAGAAATGAACTGAAAAATTACATTTAATGTTTTCAATGATGGACAAAGTTC  
 CTAATGGTATAGAGCCAATGTTGAAAGACTTGGAGGAACATATCATTAGTCTGGCCTGGCAGATATGGT  
 AGCAGCTGCTGAACTATTACTACTGACTCTGAGAAATACGTTGAGCAGTTACTTACACTATTTAATAGA  
 TTTAGTAACTCGTCAAAGAAGCTTTTCAAGATGATCCACGATTTCTACTGCAAGAGATAAGGCGTATA  
 AAGCAGTTGTTAATGATGCTACCATATTTAACTTGAATTACCTTTGAAGCAGAAGGGGGTGGATTA  
 AA  
 AACTCAGCTGAATCAAATGCCCTGAGCTGCTTGCCAATTA  
 CTGTGACATGTTGCTAAGAAAAACCA  
 TTAAGCAAAAACTAACCTCTGAAGAGATTGAAGCAAAAGCTTAAAGAAGTCTCTTGGTACTTAAGTATG  
 TACAGAACAAAGATGTTTTTATGAGGTATCATAAAGCTCATTTGACACGACGCTTATATAGACATCTC  
 TGCCGATAGTGAATTAAGAAAAACATGGTAGAGTGGCTAAGAGAAGTTGGTATGCCAGCGGATTATGTA  
 AACAAAGCTTGCTAGAATGTTTCAGGACATAAAAAGTATCTGAAGATTTGAACCAAGCTTTAAGGAAATGC  
 ACAAAAAATAAATTTGGCATTACCAGCTGATTCAAGTAAATATAAAAAATCTGAATGCTGGCGCCTGGTC  
 AAGAAGTTCTGAGAAAGTCTTTGTCTCACTTCTACTGAACTGGAGGACTTGATACCGGAAGTAGAAGAA  
 TTCTACAAAAAATCATAGTGGTAGAAAATTACATTGGCATCATCTCATGTCAAATGGAATTATAACAT  
 TTAAGAATGAAGTTGGTCAATATGATTTGGAGGTAACCACGTTTCAGCTCGCTGTATTGTTTGCATGGAA  
 CCAAAGACCCAGAGAGAAAATCAGCTTTGAAAATCTTAAGCTTGAACCTGAACTCCCTGATGCTGAACTT  
 AGGAGGACTTTATGGTCTTTAGTAGCTTTCCCAAAACTCAAACGGCAAGTTTTGTTGATGAACCTCAAG  
 TCAACTCACCCAAAGACTTTACAGAAGGTACCCTCTTCTCAGTGAACCGAGGATTCAGTTTAAATAAAAA  
 TGCAAAGGTTTCAGAAAAGGGTAAAAATCAACTTGATTGGACGTTTGCAGCTCACTACAGAAAGGATGAGA  
 GAAGAAGAGAATGAAGGAATAGTTCAACTACGAATACTAAGAACCAGGAAGCTATCATACAAATAATGA  
 AAATGAGAAAGAAAATAGTAAATGCTCAGCTGCAGACTGAATTAGTAGAAATTTGAAAAACATGTTCTT  
 GCCAAAAAGAAAATGATAAAAGAGCAAAATAGAGTGGCTAATAGAGCACAAATACATCAGAAGAGATGAA  
 TCTGATATCAACACTTTTCATATATATGGCA

**ACGCGT**ACGCGGCCGCTCGAG – GFP Tag – GTTTAA

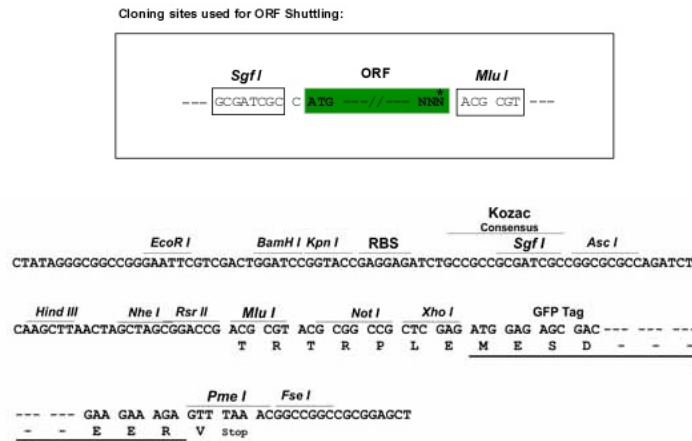
**Protein Sequence:** >RG209273 representing NM\_003478  
 Red=Cloning site Green=Tags(s)

MATSNLLKNKGSQFEDKWFMRPIVLKLLRQESVTKQQWFDLFSVHVAVCLWDDKGPAPIHQALKEDIL  
 EFIKQAQARVLSHQDDTALLKAYIVEWRKFFTQCDILPKPFCQLEITLMGKQGSNKKSNVEDSIVRKLML  
 DTWNESIFSNIKNRLQDSAMKLVHAERLGEAFDSQLVIGVRESYVNLCSNPEDKLQIYRDNFEKAYLDST  
 ERFYRTQAPSYLQQNGVQNYMKYADAKLKEEEKRALRYLETTRRECNVVEALMECCVNALVTSFKETILAE  
 CQGMIKRNETEKLHLMFSLMDKVPNGIEPMLKDLEEHIIISAGLADMVAAAETITDSEKYVEQLLTLFNR  
 FSKLVKEAFQDDPRFLTARDKAYKAVVNDATIFKLELPLKQKGVGLKTQPESKPELLANYCDMLLRKTP  
 LSKKLTSEEIEAKLKEVLLVLKYVQNKDVMRYHKAHLTRRLILDISADSEIEENMVEWLREVGMPADYV  
 NKLARMFQDIKVEDLNQAFKEMHKNNKALPADSVNIKILNAGAWSRSSEKVFVSLPTELEDLIPVEVEE  
 FYKKNHSGRKLHWHHLSNGIITFKNEVGQYDLEVTTFLAVLFAWNQRPREKISFENLKLATELPDAEL  
 RRTLWSLVAFPKLKRQVLLYEPQVNSPKDFTEGTLFSVNQEFSLIKNAKVQKRGKINLIGRLQLTTERMR  
 EEENEGIVQLRILRTQEAIQIMKMRKKISNAQLQTELVEILKNMFLPQKKMIKEQIEWLIEHKYIRRDE  
 SDINTFIYMA

TRTRPLE - GFP Tag - V

**Restriction Sites:** SgfI-MluI

**Cloning Scheme:**



**ACCN:** NM\_003478

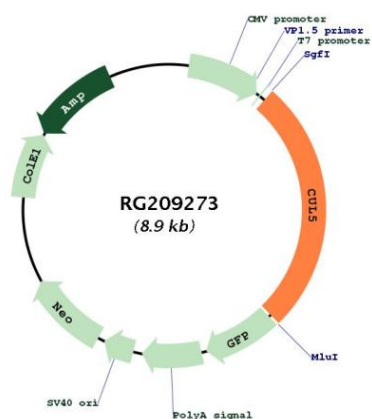
**ORF Size:** 2340 bp

**OTI Disclaimer:** The molecular sequence of this clone aligns with the gene accession number as a point of reference only. However, individual transcript sequences of the same gene can differ through naturally occurring variations (e.g. polymorphisms), each with its own valid existence. This clone is substantially in agreement with the reference, but a complete review of all prevailing variants is recommended prior to use. [More info](#)

**OTI Annotation:** This clone was engineered to express the complete ORF with an expression tag. Expression varies depending on the nature of the gene.

<b>Components:</b>	The ORF clone is ion-exchange column purified and shipped in a 2D barcoded Matrix tube containing 10ug of transfection-ready, dried plasmid DNA (reconstitute with 100 ul of water).
<b>Reconstitution Method:</b>	<ol style="list-style-type: none"><li>1. Centrifuge at 5,000xg for 5min.</li><li>2. Carefully open the tube and add 100ul of sterile water to dissolve the DNA.</li><li>3. Close the tube and incubate for 10 minutes at room temperature.</li><li>4. Briefly vortex the tube and then do a quick spin (less than 5000xg) to concentrate the liquid at the bottom.</li><li>5. Store the suspended plasmid at -20°C. The DNA is stable for at least one year from date of shipping when stored at -20°C.</li></ol>
<b>RefSeq:</b>	<a href="#">NM_003478.2</a>
<b>RefSeq Size:</b>	6408 bp
<b>RefSeq ORF:</b>	2343 bp
<b>Locus ID:</b>	8065
<b>UniProt ID:</b>	<a href="#">Q93034</a>
<b>Cytogenetics:</b>	11q22.3
<b>Domains:</b>	CULLIN
<b>Protein Families:</b>	Druggable Genome
<b>Protein Pathways:</b>	Ubiquitin mediated proteolysis
<b>Gene Summary:</b>	Core component of multiple SCF-like ECS (Elongin-Cullin 2/5-SOCS-box protein) E3 ubiquitin-protein ligase complexes, which mediate the ubiquitination and subsequent proteasomal degradation of target proteins. As a scaffold protein may contribute to catalysis through positioning of the substrate and the ubiquitin-conjugating enzyme. The functional specificity of the E3 ubiquitin-protein ligase complex depends on the variable substrate recognition component. ECS(SOCS1) seems to direct ubiquitination of JAK2. Seems to be involved in proteasomal degradation of p53/TP53 stimulated by adenovirus E1B-55 kDa protein. May form a cell surface vasopressin receptor.[UniProtKB/Swiss-Prot Function]

Product images:



Circular map for RG209273