

Product datasheet for **RG209261**

SLC26A2 (NM_000112) Human Tagged ORF Clone

Product data:

Product Type:	Expression Plasmids
Product Name:	SLC26A2 (NM_000112) Human Tagged ORF Clone
Tag:	TurboGFP
Symbol:	SLC26A2
Synonyms:	D5S1708; DTD; DTDST; EDM4; MST153; MSTP157
Mammalian Cell Selection:	Neomycin
Vector:	pCMV6-AC-GFP (PS100010)
E. coli Selection:	Ampicillin (100 ug/mL)



[View online »](#)

ORF Nucleotide Sequence:

>RG209261 representing NM_000112
 Red=Cloning site Blue=ORF Green=Tags(s)

TTTTGTAATACGACTCACTATAGGGCGGCCGGAATTCGTCGACTGGATCCGGTACCGAGGAGATCTGCC
 GCC**GCGATCGCC**

ATGTCTTCAGAAAGTAAAGAGCAACATAACGTTTCACCCAGAGACTCAGCTGAAGGAAATGACAGTTATC
 CATCTGGGATCCATCTGGAACCTCAAAGGGAATCAAGTACTGACTTCAAGCAATTTGAGACCAATGATCA
 ATGCAGACCTTATCATAGGATCCTTATTGAGCGTCAAGAGAAATCAGATACAAACTTCAAGGAGTTTGT
 ATTA AAAAGCTGCAGAAGAATTGCCAGTGCAGTCCAGCCAAAGCCAAAAATATGATTTTAGGTTTCCTTC
 CTGTTTTGCAGTGGCTCCAAAAACGACCTAAAGAAAAACATTTTAGGGGATGTGATGTCAGGCTTGAT
 TGTGGGCATATTATTGGTCCCCAGTCCATTGCTTATCCCTGCTGGCTGGCCAAGAACCTGTCTATGGT
 CTGTACACATCTTTTTTGGCAGCATCATTTATTTCTCTTGGGTACCTCCCGTCACATCTCTGTGGCA
 TTTTTGGAGTACTGTGCCTTATGATTGGTGAGACAGTTGACCGAGA ACTACAGAAAGCTGGCTATGACAA
 TGCCCATAGTGCCTTCTTAGGAATGGTTTCAAATGGGAGCACATTATTAATCATACATCAGACAGG
 ATATGTGACAAAAGTTGCTATGCAATTATGGTTGGCAGCACTGTAACTTTATAGCTGGAGTTTATCAGG
 TAGCGATGGGCTTCTTCAAGTGGGTTTTGTTTCTGTCTACCTCTCAGATGCCTTGTGAGTGGATTTGT
 CACTGGTGCTCCTTCACTATTCTTACATCTCAGGCCAAGTATCTTCTGGGCTCAACCTTCTCGGACT
 AATGGTGTGGGCTCACTCATCACTACCTGGATACATGTCTTCAGAAACATCCATAAGACCAATCTCTGTG
 ATCTTATCACCAGCCTTTTGTGCCTTTTGGTCTTTTGGCAACCAAGAAGTCAATGAACACTTCAAATC
 CAAGCTTAAGGCACCGATTCTATTGAACCTTGTGTTGTTGTAGCAGCCACATTAGCCTCTATTTTGG
 AAACATGATGAAAATTATAATTCTAGTATTGCTGGACATATCCCACTGGGTTTATGCCACCAAGTAC
 CAGAATGGAACCTAATTCCTAGTGTGGCTGTAGATGCAATAGCTATTTCCATCATTGGTTTTGCTATCAC
 TGTATCACTTTCTGAGATGTTTTGCCAAGAAACATGGTTACACAGTCAAAGCAAACCAAGGAAATGTATGCC
 ATTGGCTTTTGAATATCATCCCTTCTTCTTCCACTGTTTTACTACTAGTGCAGCTCTTGCAAAGACAT
 TGGTTAAAGAATCAACAGGCTGCCATACTCAGCTTTCTGGTGTGGTAACAGCCCTGGTCTTTTGTGGT
 CCTCTAGTAATAGTCCCTTTGTTCTATCCCTTCAAAAAGTGTCTTGGTGTGATCACAATTGTAAT
 CTACGGGGAGCCCTTCGTAATTTAGGGATCTTCCCAAAATGTGGAGTATTAGTAGAATGGATACAGTTA
 TCTGGTTTGTACTATGCTGTCTCTGCACTGCTAAGTACTGAAATAGGCCTACTTGTGGGGTTTGT
 TTCTATATTTGTGTCATCCTCCGCACTCAGAAGCCAAAGAGTTCAGTCTTGGCTTGGTGAAGAGTCT
 GAGGTCTTTGAATCTGTGTCTGCTTACAAGAACCTTCAAGTAAAGCCAGGCATCAAGATTTCCGCTTTG
 TAGCCCTCTCTACTACATAAACAAAGAATGCTTTAAATCTGCTTTATACAAACAACTGTCAACCCAAT
 CTTAATAAAGGTGGCTTGAAGAAGGCAGCAAAGAGAAAGATCAAAGAAAAAGTGTGACTCTTGGTGG
 ATCCAGGATGAAATGTCAGTGAACCTTTCCCATGATCCCTTGGAGCTGCATACTATAGTATTGACTGCA
 GTGCAATTCATTTTTAGATACAGCAGGGATCCACACACTGAAAGAAGTTCGCAGAGATTATGAAGCCAT
 TGGAAATCCAGGTTCTGCTGGCTCAGTGCATCCCACTGTGAGGGATTCCCTAACCAACGGAGAATATTGC
 AAAAAGGAAGAAGAAAACCTTCTCTTCTATAGTGTGTATGAAGCGATGGCTTTTGCAGAAGTATCTAAAA
 ATCAGAAAGGAGTATGTGTTCCCAATGGTCTGAGTCTTAGTAGTGAT

AG**CGGACCG**ACGCGTACGCGGCCGCTCGAG – GFP Tag – GTTTAA

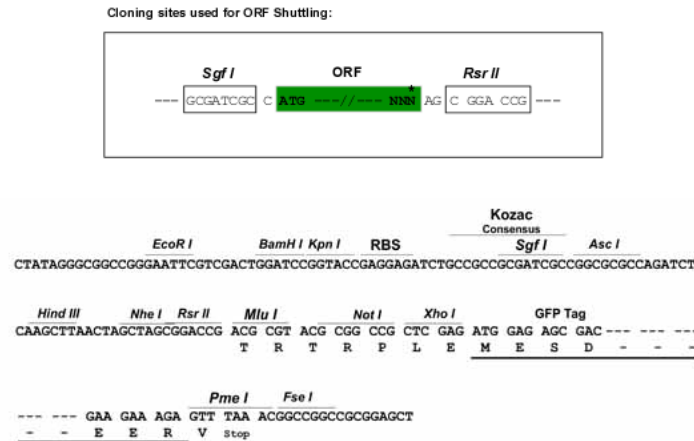
Protein Sequence: >RG209261 representing NM_000112
 Red=Cloning site Green=Tags(s)

MSESEKEQHNVSPRDSAEGNDSYPSGIHLELQRESSTDFKQFETNDQCRPYHRILIERQEKSDTNFKEFV
 IKKLQKNCQCSPAKAKNMILGFLPVLQWLPKYDLKKNILGDVMSGLIVGILLVPQSIAYSLLAQEPVYG
 LYTSFFASIIYFLLGTSRHISVGIFGVLCMIGETVDRELQKAGYDNAHSAPSLGMVSNSTLLNHTSDR
 IC DKSCYAIMVGSTVTFIAGVYQVAMGFFQVGFVSVYLS DALLSGFVTGASFTILTSQAKYLLGLNLPR
 NGVGS LITTWIHVFRNIHKTNLCDLITSL LCLLVLLPTKELNEHFKSKLKAPIELV VVVAATLASHFG
 KLHENYNSSIAGHIPTGFMPKVPENLIPSVAVDAIAISIIIGFAITVSLSEMF AKKHGYTVKANQEMYA
 IGFCNIIPSFFHCFTTSAALAKTLVKESTGCHTQLSGVVTALVLLVLLVIAPLFYSLQKSVLGVITIVN
 LRGALRKRFDLPKMWSISRMDTVIWFV TMLSSALLSTEIGLLVGVCFSIFCVILRTQKPKSLLGLVEES
 EVFESVSAYKNLQTKPGIKIFRFVAPLYINKECFKSALYKQTVNPILIKVAVKKAARKRIKEKVVTLGG
 IQDEM SVQLSHDPLELHTIVIDCSAIQFLDTAGIHTLKEVRRDYEATIGIQVLLAQCNPTVRDSL NGEYC
 KKEEENLLFYSVYEAMAF AEVSKNQKGVCPNGLSLSSD

SGP TRRRLE - GFP Tag - V

Restriction Sites: SgfI-RsrII

Cloning Scheme:



ACCN: NM_000112

ORF Size: 2217 bp

OTI Disclaimer: The molecular sequence of this clone aligns with the gene accession number as a point of reference only. However, individual transcript sequences of the same gene can differ through naturally occurring variations (e.g. polymorphisms), each with its own valid existence. This clone is substantially in agreement with the reference, but a complete review of all prevailing variants is recommended prior to use. [More info](#)

OTI Annotation: This clone was engineered to express the complete ORF with an expression tag. Expression varies depending on the nature of the gene.

Components: The ORF clone is ion-exchange column purified and shipped in a 2D barcoded Matrix tube containing 10ug of transfection-ready, dried plasmid DNA (reconstitute with 100 ul of water).

Reconstitution Method:

1. Centrifuge at 5,000xg for 5min.
2. Carefully open the tube and add 100ul of sterile water to dissolve the DNA.
3. Close the tube and incubate for 10 minutes at room temperature.
4. Briefly vortex the tube and then do a quick spin (less than 5000xg) to concentrate the liquid at the bottom.
5. Store the suspended plasmid at -20°C. The DNA is stable for at least one year from date of shipping when stored at -20°C.

RefSeq: [NM_000112.2](#), [NP_000103.1](#)

RefSeq Size: 8082 bp

RefSeq ORF: 2220 bp

Locus ID: 1836

UniProt ID: [P50443](#)

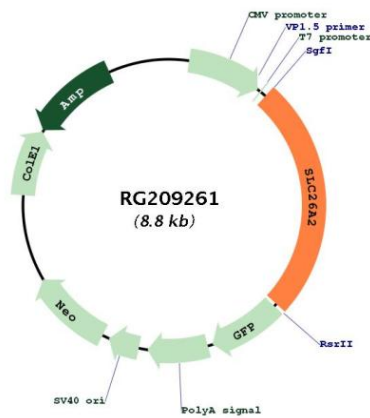
Cytogenetics: 5q32

Domains: Sulfate_transp, STAS

Protein Families: Druggable Genome, Transmembrane

Gene Summary: The diastrophic dysplasia sulfate transporter is a transmembrane glycoprotein implicated in the pathogenesis of several human chondrodysplasias. It apparently is critical in cartilage for sulfation of proteoglycans and matrix organization. [provided by RefSeq, Jul 2008]

Product images:



Circular map for RG209261