

Product datasheet for **RG209255**

PP4R1 (PPP4R1) (NM_005134) Human Tagged ORF Clone

Product data:

Product Type:	Expression Plasmids
Product Name:	PP4R1 (PPP4R1) (NM_005134) Human Tagged ORF Clone
Tag:	TurboGFP
Symbol:	PP4R1
Synonyms:	MEG1; PP4(Rmeg); PP4R1
Mammalian Cell Selection:	Neomycin
Vector:	pCMV6-AC-GFP (PS100010)
E. coli Selection:	Ampicillin (100 ug/mL)



[View online »](#)

ORF Nucleotide Sequence:

>RG209255 representing NM_005134
 Red=Cloning site Blue=ORF Green=Tags(s)

TTTTGTAATACGACTCACTATAGGGCGGCCGGGAATTCGTCGACTGGATCCGGTACCGAGGAGATCTGCC
 GCC**CGGATCGCC**

ATGGCGGACCTCTCGCTGCTTCAGGAGGACCTGCAGGAGGACGCAGACGGATCCCTGGACTTTGTCTCAC
 AAGATGAAATGTTGACGCCCTGGGAGATTGGACAAGTATGCTGCAAGTGAGAACATATTTAACAGACA
 AATGGTGGCCCGGAGTTTCTCGATACCTTGAGGGAAGTCTGCGATGATGAAAGAGATTGTATTGCTGTT
 TTGAAAGAATTAGCAGATTGGCCGATGATTCAGAACCAACTGTGAGAGCGGAGCTGATGGAACAGGTGC
 CTCACATCGCACTGTTTTGTCAAGAAAACCGCCCTTCAATACCATATGCTTTTTCAAATTTCTACTACC
 TATTGTGGTTAGATACCTTGAGATCAGAATAATCAGGTGAGGAAAACAAGTCAAGCAGCTTTGCTGGCT
 CTGTTGGAGCAGGAGCTCATTGAACGATTTGATGTGGAGACCAAGTGTGCCCTGTCTCATAGAGCTGA
 CAGCCCCAGATAGCAATGATGATGTGAAAACAGAAGCTGTGGCTATAATGTGCAAAATGGCTCCCATGGT
 TGGGAAGGATATTACAGAGCGTCTTATCCTCCCTAGGTTTTGTGAGATGTCTGCGATTGCAGAATGTTT
 CAGGTTGAAAAGTCTGTGCTGCCAATTTTGGAGATATTTGCAGTGTAGTTGGCCAGCAAGCTACTGAAG
 AAATGTTGCTGCCAGATTTTTCCAGCTTTGTTCTGATAATGTATGGGGAGTCCGAAAGGCTTGTGCTGA
 ATGCTTCATGGCGGTTTCATGTGCAACATGTCAAGAAATCCGACGGACCAAAATTATCAGCACTTTTTATT
 AATTTGATCAGTGATCCTTCAGTTGGGTTTCGCCAAGCAGCTTTTCAGTCTCTGGGACCTTTTCATATCTA
 CTTTTGCTAATCCATCTAGCTCAGGCCAGTATTTTAAAGAAGAAAAGCAAAAGTTCAGAAGAGATGTCAGT
 AGAAAACAAAAATAGGACCAGAGATCAAGAAGCCCCAGAGGATGTACAAGTCAGGCCAGAGGATACTCCT
 TCAGATCTCAGTGTTAGTAATCCAGTGCATACTGGAAAACACGATGGAAGACCATGCTGCTGAGGCAT
 CCGGGAAGCCTCTAGGTGAAATTAGTGTCCACTGGACAGCTTTTACTTTGTACTTTGCTCCTCAGATC
 TCACCAGGAAGCAGCTAGTAATGAGAATGATAAAAAACCTGGTAACTACAATCTATGTTACGACCAGAG
 GTTGGCACCACTTCAAGATTAGCTCTCTTAGATCAGGAATTGTATAACTCCTTCCATTTCTGGAGGA
 CTCCTCTCTGAAATAGATCTAGACATAGAGCTTGAACAGAACTCTGGGGGAAAACCCAGCCAGAGGG
 ACCAGAGGAAGAATCTGAGGGCCCTGTGCCAGTTCTCCAACATCACCATGGCCACCAGAAAGGAACTG
 GAAGAAATGATAGAAAATCTAGAGCCCCACATTGATGATCCAGATGTTAAAGCACAAGTGGAAAGTGTGT
 CCGCTGCACTACGTGCTCCAGCCTGGATGCACATGAAGAGACCATCAGTATAGAAAAGAGAAGTGATTT
 GCAAGATGAAGTGGATATAAATGAGCTACCAAATTTGAAAATAAATCAAGAAGATTCTGTGCCTTTAATC
 AGCGATGCTGTTGAGAATATGGACTCCACTCTTCACTATATTCACAGCGATTCAGACTTGAGCAACAATA
 GCAGTTTTAGCCCTGATGAGGAAAGGAGAACTAAAGTACAAGATGTTGTACCTCAGGCGTTGTTAGATCA
 GTATTTATCTATGACTGACCCTTCTCGTGACAGACGGTTGACACTGAAATTTGCTAAGCACTGTGCATAT
 AGCCTCCCTGGTGTGGCCTTGACACTCGGAAGACAGAATTGGCACTGCCTGAGAGAGACGTATGAGACTC
 TGGCCTCAGACATGCAGTGGAAAGTTCGACGAACCTTAGCATTCTCCATCCAGGACTTGCAGTTATTCT
 TGGAGATCAATTGACAGCTGCAGATCTGGTTCCAATTTTTAATGGATTTTTAAAAGACCTCGATGAAGTC
 AGGATAGGTGTTCTTAAACACTTGCATGATTTTCTGAAGCTTCTCATATTGACAAAAGAAGAGAATATC
 TTTATCAACTTCAGGAGTTTTTGGTGACAGATAATAGTAGAAAATGGCGGTTTCGAGCTGAACTGGCTGA
 ACAGCTGATTTTACTTCTAGAGTTATATAGTCCCAGAGATGTTTATGACTATTTACGTCCCATTGCTCTG
 AATCTGTGTGCAGACAAAGTTTCTTCTGTTGTTGATTTCCTACAAGTTGGTCAGCGAGATGGTGAAGA
 AGCTGCACGCGGCAACACCACCAACGTTTCGGAGTGGACCTCATCAATGAGCTTGTGGAGAAGTTTGGCAG
 ATGTCCCAAGTGGTCTGGTTCGGCAAGCCTTTGTCTTTGTCTGCCAGACTGTCATTGAGGATGACTGCCTT
 CCCATGGACCAGTTTGTGTGCATCTCATGCCGCATCTGCTAACCTTAGCAAAATGACAGGGTTTCTAACG
 TGGCAGTGTGCTTGCAAAAGACATTAAGACAACTCTACTAGAAAAGACTATTTCTTGGCCTCTGCCAG
 CTGCCACCAGGAGGCTGTGGAGCAGACCATCATGGCTCTCAGATGGACCGTGACAGCGATGTCAAGTAT
 TTTGCAAGCATCCACCCTGCCAGTACCAAATCTCCGAAGATGCCATGAGCACAGCGTCTCAACCTAC

ACGCGTACGCGGCCGCTCGAG – GFP Tag – GTTTAA

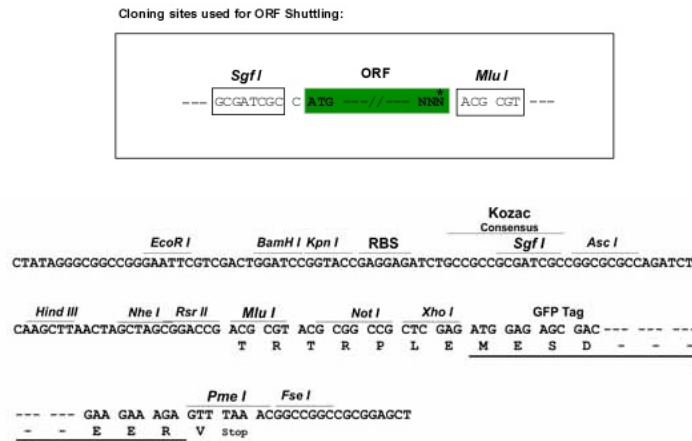
Protein Sequence: >RG209255 representing NM_005134
 Red=Cloning site Green=Tags(s)

MADLSLLQEDLQEDADGSLDFVSDQDEMLTPLGRLDKYAASENIFNRQMVARSLLDRTLREVCDDERDCIAV
 LERISRLADDSEPTVRAELMEQVPHIALFCQENRPSIPYAFSKFLLPIVVRYLADQNNQVRKTSQAALLA
 LLEQELIERFDVETKVCVPLIELTAPDSNDDVKTEAVAIMCKMAPMVGKDITERLILPRFCMCCDCRMF
 HVRKVCANFGDICSVVGQQATEEMLLPRFFQLCSDNVWGVKACAECFMAVSCATCQEIRRTKLSALFI
 NLI SDPSRWVRQAAFQSLGPFISTFANPSSSGQYFKEESKSSEEMSVENKNRTRDQEAPEDEVQVRPEDTP
 SDL SVSNSSVILENTMEDHAAEASGKPLGEISVPLDSSLLCTLSSESHQEAAASNENDKKPGNYKSMRLPE
 VGTTSQDSALLDQELYN SFHFWRTPLPEIDLIELEQNSGGKPSPEGPEEESEGPVSPSPNITMATRKEL
 EEMIENLEPHIDDPDKA QVEVLSAALRASSLDAHEETISIEKRSDLQDELINELPNCKINQEDSVPLI
 SDAVENMDSTLHYIHSDSL SNNSFSPEEERTKVQDVVPQALLDQYLSMTDPSRAQTVDTETIAKHCA
 YSLPGVALTLGRQNWHLRETYETLADSMQWKVRRTLAFSHELAVILGDQLTAADLVPIFNGFLKDLDEV
 RIGVLKHLHDFLKLHIDKRRELYQLQEFVLT DNSRNWRFRAELAEQLIL LLELYSPRDVYDYL RPIAL
 NLCADKVVSVRWISYKLVSEMVKKLHAATPPTFGVDLINELVENFGRCPKWSGRQAFVFCQTVIEDDCL
 PMDQFAVHLMPHLLTLANDRVPNVRVLLAKTLRQTLLEKDYFLASASCHQEAVEQTIMALQMDRDSVVKY
 FASIH PASTKISEDAMSTASSTY

TRTRPLE - GFP Tag - V

Restriction Sites: SgfI-MluI

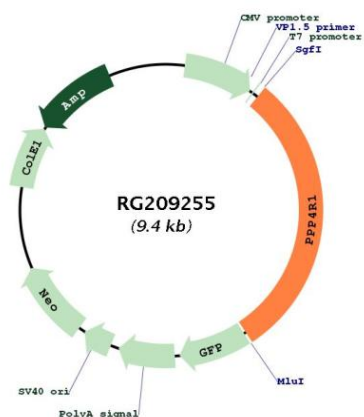
Cloning Scheme:



ACCN: NM_005134

ORF Size:	2799 bp
OTI Disclaimer:	The molecular sequence of this clone aligns with the gene accession number as a point of reference only. However, individual transcript sequences of the same gene can differ through naturally occurring variations (e.g. polymorphisms), each with its own valid existence. This clone is substantially in agreement with the reference, but a complete review of all prevailing variants is recommended prior to use. More info
OTI Annotation:	This clone was engineered to express the complete ORF with an expression tag. Expression varies depending on the nature of the gene.
Components:	The ORF clone is ion-exchange column purified and shipped in a 2D barcoded Matrix tube containing 10ug of transfection-ready, dried plasmid DNA (reconstitute with 100 ul of water).
Reconstitution Method:	<ol style="list-style-type: none">1. Centrifuge at 5,000xg for 5min.2. Carefully open the tube and add 100ul of sterile water to dissolve the DNA.3. Close the tube and incubate for 10 minutes at room temperature.4. Briefly vortex the tube and then do a quick spin (less than 5000xg) to concentrate the liquid at the bottom.5. Store the suspended plasmid at -20°C. The DNA is stable for at least one year from date of shipping when stored at -20°C.
RefSeq:	NM_005134.4
RefSeq Size:	3878 bp
RefSeq ORF:	2802 bp
Locus ID:	9989
UniProt ID:	Q8TF05
Cytogenetics:	18p11.22
Domains:	HEAT
Protein Families:	Druggable Genome, Phosphatase
Gene Summary:	This gene encodes one of several alternate regulatory subunits of serine/threonine protein phosphatase 4 (PP4). The protein features multiple HEAT repeats. This protein forms a complex with PP4RC. This complex may have a distinct role from other PP4 complexes, including regulation of HDAC3 (Zhang et al., PMID: 15805470). There is also a transcribed pseudogene on chromosome 20. Alternative splicing results in multiple transcript variants. [provided by RefSeq, Jun 2012]

Product images:



Circular map for RG209255