

Product datasheet for **RG209250**

ASCL2 (NM_005170) Human Tagged ORF Clone

Product data:

Product Type: Expression Plasmids
Product Name: ASCL2 (NM_005170) Human Tagged ORF Clone
Tag: TurboGFP
Symbol: ASCL2
Synonyms: ASH2; bHLHa45; HASH2; MASH2
Mammalian Cell Selection: Neomycin
Vector: pCMV6-AC-GFP (PS100010)
E. coli Selection: Ampicillin (100 ug/mL)
ORF Nucleotide Sequence: >RG209250 representing NM_005170
 Red=Cloning site Blue=ORF Green=Tags(s)

TTTTGTAATACGACTCACTATAGGGCGGCCGGAATTCGTCGACTGGATCCGGTACCGAGGAGATCTGCC
 GCC**CGATCGCC**

ATGGACGGCGGCACACTGCCAGGTCCGCGCCCCCTGCGCCCCCGTCCCTGTCCGGTGCCTGCCCGGC
 GGAGACCCCGCTCCCGAACTGTTGCGCTGCAGCCGGCGGGCGACCGCCACCGCAGAGACCGGAGG
 CGGCGCAGCGCCGTAGCGCGGCGCAATGAGCGCGAGCGCAACCGCTGAAGCTGGTGAACCTGGGCTTC
 CAGGCGCTGCGGCAGCACGTGCCGACGGCGGCCAGCAAGAAGCTGAGCAAGGTGGAGACGCTGCGCT
 CAGCCGTGGAGTACATCCGCGCGCTGCAGCGCCTGCTGGCCGAGCACGACGCCGTGCGCAACGCGCTGGC
 GGGAGGGCTGAGGCCGACGGCCGTGCGGCCGTCTGCGCCCCGCGGGCCGCCAGGGACACCCCGGTCCGC
 GCCTCGCCCTCCCGCGCTTCTTCGTCGCCGGGCGCGGGGCGAGCTCGGAGCCCGCTCCCGCGTTCCG
 CCTACTCGTCGGACGACAGCGGCTGCGAAGGCGCGCTGAGTCTCGGGAGCGCGAGCTACTCGACTTCTC
 CAGCTGGTTAGGGGGCTAC

AG**CGGACCG**ACGCGTACGCGGCCGCTCGAG - GFP Tag - GTTTAA

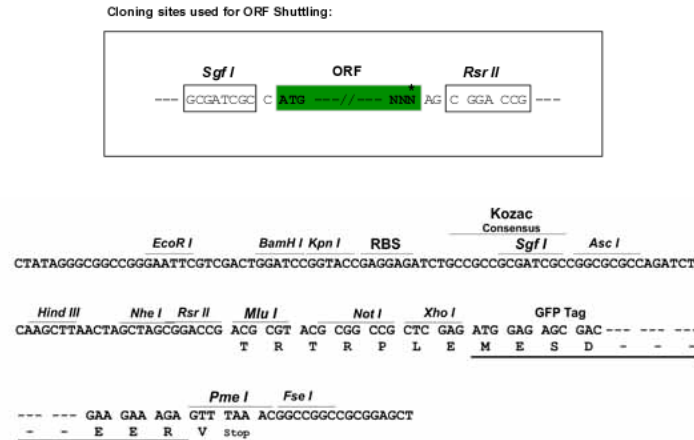
Protein Sequence: >RG209250 representing NM_005170
 Red=Cloning site Green=Tags(s)

MDGGTLPRSAPPAPPVPGCAARRRPASPELLRCSRRRRPATAETGGGAAAVARRNERERNRVKLVNLGF
 QALRQHVPHGGASKKLSKVETLRSAYEYIRALQRLLAEHDAVRNALAGGLRPQAVRPSAPRPPGTPVA
 ASPSRASSPGRGGSSEPGSPRSAYSSDDSGEGALSPAERELLDFFSSWLGYY

SGP**TRRRLE** - GFP Tag - V

Restriction Sites: Sgfl-RsrII



Cloning Scheme:


ACCN: NM_005170

ORF Size: 579 bp

OTI Disclaimer: Due to the inherent nature of this plasmid, standard methods to replicate additional amounts of DNA in E. coli are highly likely to result in mutations and/or rearrangements. Therefore, OriGene does not guarantee the capability to replicate this plasmid DNA. Additional amounts of DNA can be purchased from OriGene with batch-specific, full-sequence verification at a reduced cost. Please contact our customer care team at custsupport@origene.com or by calling 301.340.3188 option 3 for pricing and delivery.

The molecular sequence of this clone aligns with the gene accession number as a point of reference only. However, individual transcript sequences of the same gene can differ through naturally occurring variations (e.g. polymorphisms), each with its own valid existence. This clone is substantially in agreement with the reference, but a complete review of all prevailing variants is recommended prior to use. [More info](#)

OTI Annotation: This clone was engineered to express the complete ORF with an expression tag. Expression varies depending on the nature of the gene.

Components: The ORF clone is ion-exchange column purified and shipped in a 2D barcoded Matrix tube containing 10ug of transfection-ready, dried plasmid DNA (reconstitute with 100 ul of water).

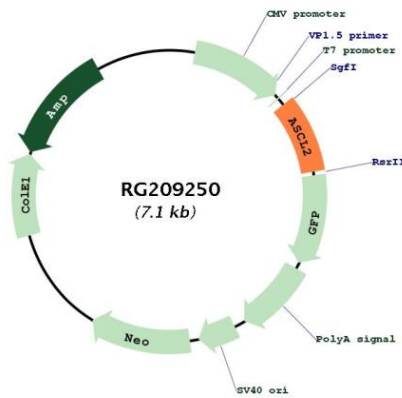
- Reconstitution Method:**
1. Centrifuge at 5,000xg for 5min.
 2. Carefully open the tube and add 100ul of sterile water to dissolve the DNA.
 3. Close the tube and incubate for 10 minutes at room temperature.
 4. Briefly vortex the tube and then do a quick spin (less than 5000xg) to concentrate the liquid at the bottom.
 5. Store the suspended plasmid at -20°C. The DNA is stable for at least one year from date of shipping when stored at -20°C.

RefSeq: [NM_005170.2](#), [NP_005161.1](#)

RefSeq Size: 1864 bp
RefSeq ORF: 582 bp
Locus ID: 430
UniProt ID: [Q99929](#)
Cytogenetics: 11p15.5
Protein Families: Druggable Genome, Transcription Factors
Gene Summary:

This gene is a member of the basic helix-loop-helix (BHLH) family of transcription factors. It activates transcription by binding to the E box (5'-CANNTG-3'). Dimerization with other BHLH proteins is required for efficient DNA binding. Involved in the determination of the neuronal precursors in the peripheral nervous system and the central nervous system. [provided by RefSeq, Jul 2008]

Product images:



Circular map for RG209250