

Product datasheet for **RG209247**

c Maf (MAF) (NM_001031804) Human Tagged ORF Clone

Product data:

Product Type:	Expression Plasmids
Product Name:	c Maf (MAF) (NM_001031804) Human Tagged ORF Clone
Tag:	TurboGFP
Symbol:	c Maf
Synonyms:	AYGRP; c-MAF; CCA4; CTRCT21
Mammalian Cell Selection:	Neomycin
Vector:	pCMV6-AC-GFP (PS100010)
E. coli Selection:	Ampicillin (100 ug/mL)
ORF Nucleotide Sequence:	>RG209247 representing NM_001031804 Red=Cloning site Blue=ORF Green=Tags(s)

TTTTGTAATACGACTCACTATAGGGCGGCCGGAATTCGTCGACTGGATCCGGTACCGAGGAGATCTGCC
GCC**CGATCGCC**

ATGGCATCAGAAGTGGCAATGAGCAACTCCGACCTGCCACCAGTCCCCTGGCCATGGAATATGTTAATG
ACTTCGATCTGATGAAGTTTGAAGTAAAAAGGAACCGGTGGAGACCGACCGCATCATCAGCCAGTGC
CCGTCTCATCGCCGGGGCTCGCTGTCTCCACCCCATGAGCACGCGTGCAGCTCGGTGCCCTTCC
CCCAGCTTCTCGGCGCCAGCCGGGCTCGGCGAGCAGCAGAAGGCGCACCTGGAAGACTACTACTGGA
TGACCGGTACCCGAGCAGCTGAACCCGAGGCGCTGGGCTTACGCCCCGAGGACGCGGTGAGGCGCT
CATCAGCAACAGCCACCAGCTCCAGGGCGCTTCGATGGCTACGCGCGCGGGGCGCAGCAGCTGGCCGCG
GCGGCCGGGGCCGGTGCCTGGCGCCTCTTGGGCGCAGCGCGGAGGAGATGGGCCCGCCGCGCGGTGG
TGTCCGCGTGATCGCCGCGCCGCGCAGAGCGCGCGGGCCGCACTACCACCACCACCACCACCA
CGCCGCGGCCACCACCACCACCCGACGCGCGCGCGCCGCGCGCGGGCAGCGCGGCCGCTCGGCC
GGTGGCGTGGGGCGCGGGCGGGTGGCCGCGCAGCCTGGGGCGCGGGCGCGCGCGCGCGCGGCG
GAGGCGCGGGGGCGCGGGGGCGGGGGCGCCCTGCACCCGACACGCGCCGCGCGCGCTGCACCT
CGACGACCGCTTCTCCGACGAGCAGCTGGTGACCATGTCTGTGCGGAGCTGAACCGCAGCTGCGCGG
GTCAGCAAGGAGGAGTATCCGGCTGAAGCAGAAGAGGCGGACCCTGAAAAACCGGGTATGCCAGT
CCTGCCGCTTCAAGAGGTGCAGCAGAGACAGTCTGGAGTCGGAGAAGAACCAGCTGCTGCAGCAAGT
CGACCACCTCAAGCAGGAGATCTCCAGGCTGGTGCAGGAGGACGCGTACAAGGAGAAATACGAGAAG
TTGGTGAGCAGCGCTTCCGAGAAAACGGCTCGAGCAGCACAACCCGCTCTCCCGAGTTTTTTCATG

AG**CGGACCG**ACGCGTACGCGCCGCTCGAG - GFP Tag - GTTTAA



[View online »](#)

Protein Sequence: >RG209247 representing NM_001031804
Red=Cloning site Green=Tags(s)

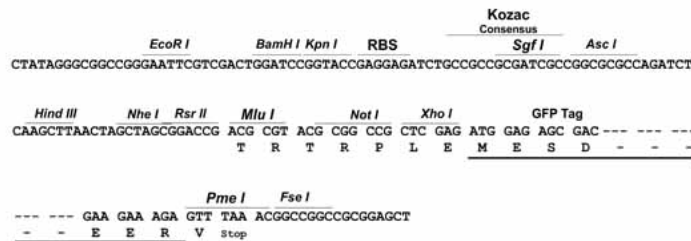
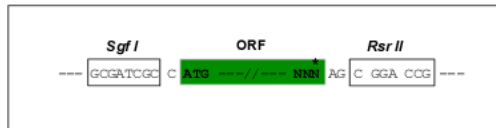
MASELAMNSDLPTSPLAMEYVNDFDLMKFEVKKEPVETDRIISQCGRLIAGGSLSSTPMSTPCSSVPPS
 PSFSAPSPGSGSEQKAHLEDYYWMTGYPPQLNPEALGFSPEDAVALISNSHQLQGGFDGYARGAQLAA
 AAGAGAGASLGGSGEEMGPAAAVVS AVIAAAAAQSGAGPHYHHHHHHAAGHHHPTAGAPGAAGSAAASA
 GGAGAGGGGPASAGGGGGGGGGGGAAGAGGALHPHHAAGGLHFDDRFSDEQLVTMSVRELNRQLRG
 VSKEEVIRLQKRRRTLKNRGYAQSCRFKRVQRHVLESEKNQLLQQVDHLKQEI SRLVRERDAYKEKEYE
 LVSSGFRENGSSSDNPSSPEFFM

SGPTRRRLE - GFP Tag - V

Restriction Sites: SgfI-RsrII

Cloning Scheme:

Cloning sites used for ORF Shuttling:



ACCN: NM_001031804

ORF Size: 1119 bp

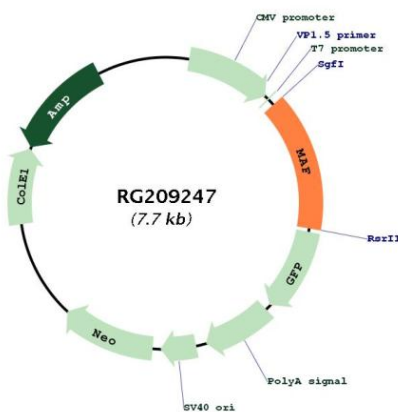
OTI Disclaimer: Due to the inherent nature of this plasmid, standard methods to replicate additional amounts of DNA in E. coli are highly likely to result in mutations and/or rearrangements. Therefore, OriGene does not guarantee the capability to replicate this plasmid DNA. Additional amounts of DNA can be purchased from OriGene with batch-specific, full-sequence verification at a reduced cost. Please contact our customer care team at custsupport@origene.com or by calling 301.340.3188 option 3 for pricing and delivery.

The molecular sequence of this clone aligns with the gene accession number as a point of reference only. However, individual transcript sequences of the same gene can differ through naturally occurring variations (e.g. polymorphisms), each with its own valid existence. This clone is substantially in agreement with the reference, but a complete review of all prevailing variants is recommended prior to use. [More info](#)

OTI Annotation: This clone was engineered to express the complete ORF with an expression tag. Expression varies depending on the nature of the gene.

- Components:** The ORF clone is ion-exchange column purified and shipped in a 2D barcoded Matrix tube containing 10ug of transfection-ready, dried plasmid DNA (reconstitute with 100 ul of water).
- Reconstitution Method:**
1. Centrifuge at 5,000xg for 5min.
 2. Carefully open the tube and add 100ul of sterile water to dissolve the DNA.
 3. Close the tube and incubate for 10 minutes at room temperature.
 4. Briefly vortex the tube and then do a quick spin (less than 5000xg) to concentrate the liquid at the bottom.
 5. Store the suspended plasmid at -20°C. The DNA is stable for at least one year from date of shipping when stored at -20°C.
- RefSeq:** [NM_001031804.3](#)
- RefSeq Size:** 6887 bp
- RefSeq ORF:** 1122 bp
- Locus ID:** 4094
- UniProt ID:** [O75444](#)
- Cytogenetics:** 16q23.2
- Protein Families:** Druggable Genome, Transcription Factors
- Gene Summary:** The protein encoded by this gene is a DNA-binding, leucine zipper-containing transcription factor that acts as a homodimer or as a heterodimer. Depending on the binding site and binding partner, the encoded protein can be a transcriptional activator or repressor. This protein plays a role in the regulation of several cellular processes, including embryonic lens fiber cell development, increased T-cell susceptibility to apoptosis, and chondrocyte terminal differentiation. Defects in this gene are a cause of juvenile-onset pulverulent cataract as well as congenital cerulean cataract 4 (CCA4). Two transcript variants encoding different isoforms have been found for this gene. [provided by RefSeq, Jan 2010]

Product images:



Circular map for RG209247