

Product datasheet for **RG209239**

EPM2AIP1 (NM_014805) Human Tagged ORF Clone

Product data:

Product Type:	Expression Plasmids
Product Name:	EPM2AIP1 (NM_014805) Human Tagged ORF Clone
Tag:	TurboGFP
Symbol:	EPM2AIP1
Mammalian Cell Selection:	Neomycin
Vector:	pCMV6-AC-GFP (PS100010)
E. coli Selection:	Ampicillin (100 ug/mL)



[View online »](#)

ORF Nucleotide Sequence:

>RG209239 representing NM_014805
 Red=Cloning site Blue=ORF Green=Tags(s)

TTTTGTAATACGACTCACTATAGGGCGGCCGGAATTCGTCGACTGGATCCGGTACCGAGGAGATCTGCC
 GCC**CGCATCGCC**

ATGTGGATGACGCCAAAAGAAGCAAGATGGAAGTCGACGAGGCTCTAGTTTTCCGGCCGAGTGGACCC
 AGCGTTATTTGGTGGTGGAGCCTCCGGAGGGCGATGGGGCCCTGTGCCTGGTCTGTGCGCCCTCATCGT
 AGCTACCCGGAACGCGACGTCAGGCGCCACTACGAGGCTGAGCACGAATACTACGAGCGGTATGTGGCG
 GACGGCGAGCGCGGCCCTGGTGGAGCGTCTGCGTCAGGGCGACTTGCCCGTGGCTCCTTCACTCCTG
 AAGAGAGAGCTGCTCGTGCAGGCCTCGGGCTCTGCCGCTTGGCCCTGAAGGGTCGCGGCTGGGGTGA
 GGGGGACTTTGTATACCAGTGCATGGAGGTGTTGCTGAGAGAGGTAAGGCGAGCATGTAAGCGTCTG
 CAAGGCGTTGACTTATCTCCAGATATCACAAAGGCAGAGGATCCTGAGCATTGACAGGAATCTACGCAACC
 AGCTTTTTAACCGAGCCAGGGACTTTAAAGCCTATTCTCTTGCCTGGACGACCAGGCTTTTGTGGCCTA
 TGAGAACTACCTCTGGTCTTTATCCGCGGTGTAGGCCCTGAGTTGGAGGTGCAAGAAGATCTTCTGACC
 ATAATCAACCTGACTCATATTTAGTGTGGTGCCTCATGTCGCAATCCTAGAGTCCCTGCAGACAG
 CAGGGCTTAGCTTGCAGAGAATGGTTGGACTGACCACGACCCATACTTTGAGGATGATTGGTGAGAACTC
 AGGACTCGTCTCATACATGAGAGAAAAGGCCGTAAGCCCCAACTGTTGGAATGTCATTATTATTCAGGA
 TTTCTTCACTTGGAACTGTTGAGCTCCTATGATGTAGATGTTAATCAGATCATAAATACCATATCCGAAT
 GGATAGTTTTGATTAAGACCAGAGGCGTTAGGCGACCTGAATTTAGACTTTACTAACGGAATCTGAATC
 AGAGCATGGTAAAGGGTTAATGGACGATGTCTGAACAATTGGCTTAGGAGAGGGAAAACTTTAAACTA
 ATATTCTCTAAGAAAAGAAAATGGAAGCGTTCTTGGTTTCAGTAGGGCAACAACAGTCCACTTCTCAG
 ACAACCAATGGCTTTGTGACTTTGGCTTCTTGGTGGACATTATGGAACACCTTCGAGAACTCAGTGAAGA
 ATTACGAGTTAGTAAAGTCTTTGCTGCTGCCTTTGACCATATTTGTACTTTTGAAGTTAAGCTGAAT
 TTATTTCAAAGACATATTGAGGAAAAAATCTAACAGACTTTCCTGCCCTCAGAGAAGTTGTTGATGAGC
 TAAAACAGCAAAAATAGGAAGATGAAAAAATTTGATCCTGATAGGTATCAAATGGTGTCTGTCGTCT
 CAAAAAAGAAATTTGAGAGACATTTAAGGACCTCAGGTTCAATAAAAAGGACTTAGAACTTTTTTCAAAT
 CCATTTAACTTTAACTGAATATGCACCTATTTAGTGGGTTGGAGCTAACAAAACCTCAGGCAAAACA
 CTAATCTTTGGAATGAATACAGAATCAAAGACTGGGGCAGTTTTATGCTGGATTGTCTGCTGAATCCTA
 CCCAATTATCAAAGGGTTGCCGTAAAGGTGGCATCCTTGTGTTGATAGTAAACCAATCTGTGAAAAGGCT
 TTTTCATATTTGACTCGAAACCAACACTTTGAGTCAGCCATTAAACAGATGAGCATCTCCAAGCCCTGT
 TTCGGGTTGCCACAACCTGAAATGGAGCCGGTTGGGATGACCTTGTGAGAGAAAGAAATGAATCTAATCC
 A

ACGCGTACGCGGCCGCTCGAG - GFP Tag - GTTTAA

Protein Sequence:

>RG209239 representing NM_014805
 Red=Cloning site Green=Tags(s)

MWMTPKRSKMEVDEALVFRPEWTQRYLVPEPEGDGALCLVCRRLIVATRERDVRHRYEAEHEYERYVA
 DGERAALVERLRQGLPVASFTPEERAARAGLGLCRLLALKGRGWEGDFVYQCMVLLREVLPEHVSVL
 QGVDLSPDITRQILSIDRNLRNQLFNRRDFKAYSLALDDQAFVAYENYLLVIRGVGPELEVQEDLLT
 IINLTHHFSVGMALMSAILESQTAGLSLQRMVGLTTHTLRMIGENSGLSYMRKAVSPNCWNVIIHYS
 FLHLELLSSYDQVQIINTISEWIVLIKTRGVRPEFQTLTTESESEHGERVNGRCLNNWLRGKTLKL
 IFSLRKEMEAFLVSVGATTVHFSDKQWLCDFGLVDIMEHLRELSEELRVSKVFAAAAFDHICTFEVKLN
 LFQRHIEEKNLTDFPALREVVDLQKQNKEDKIFDPDRYQMVICRLQKEFERHFKDLRFIKKDLELFSN
 PFNFKPEYAPISVRVELTKLQANTNLWNEYRIKDLGQFYAGLSAESYPIIKGVACKVASLFDNSQICEKA
 FSYLTRNQHTLSQPLTDEHLQALFRVATTEMPEGWDDLVRERNESNP

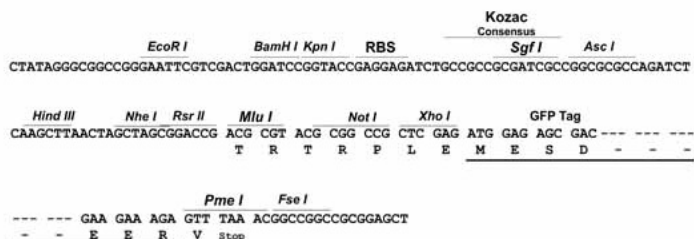
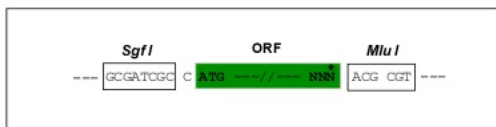
TRTRPLE - GFP Tag - V

Restriction Sites:

SgfI-MluI

Cloning Scheme:

Cloning sites used for ORF Shutting:


ACCN: NM_014805

ORF Size: 1821 bp

OTI Disclaimer: The molecular sequence of this clone aligns with the gene accession number as a point of reference only. However, individual transcript sequences of the same gene can differ through naturally occurring variations (e.g. polymorphisms), each with its own valid existence. This clone is substantially in agreement with the reference, but a complete review of all prevailing variants is recommended prior to use. [More info](#)

OTI Annotation: This clone was engineered to express the complete ORF with an expression tag. Expression varies depending on the nature of the gene.

Components: The ORF clone is ion-exchange column purified and shipped in a 2D barcoded Matrix tube containing 10ug of transfection-ready, dried plasmid DNA (reconstitute with 100 ul of water).

Reconstitution Method:

1. Centrifuge at 5,000xg for 5min.
2. Carefully open the tube and add 100ul of sterile water to dissolve the DNA.
3. Close the tube and incubate for 10 minutes at room temperature.
4. Briefly vortex the tube and then do a quick spin (less than 5000xg) to concentrate the liquid at the bottom.
5. Store the suspended plasmid at -20°C. The DNA is stable for at least one year from date of shipping when stored at -20°C.

RefSeq: [NM_014805.4](#)
RefSeq Size: 5567 bp

RefSeq ORF: 1824 bp

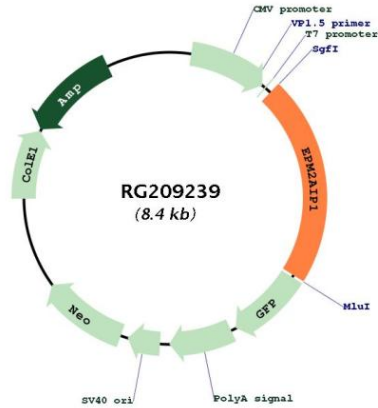
Locus ID: 9852

UniProt ID: [Q7L775](#)
Cytogenetics: 3p22.2

Gene Summary:

The EPM2A gene, which encodes laforin, is mutated in an autosomal recessive form of adolescent progressive myoclonus epilepsy. The protein encoded by this gene binds to laforin, but its function is not known. This gene is intronless. [provided by RefSeq, Oct 2008]

Product images:



Circular map for RG209239