

Product datasheet for **RG209231**

CNNM4 (NM_020184) Human Tagged ORF Clone

Product data:

| | |
|---------------------------|--|
| Product Type: | Expression Plasmids |
| Product Name: | CNNM4 (NM_020184) Human Tagged ORF Clone |
| Tag: | TurboGFP |
| Symbol: | CNNM4 |
| Synonyms: | ACDP4 |
| Mammalian Cell Selection: | Neomycin |
| Vector: | pCMV6-AC-GFP (PS100010) |
| E. coli Selection: | Ampicillin (100 ug/mL) |



[View online »](#)

ORF Nucleotide Sequence:

>RG209231 representing NM_020184
 Red=Cloning site Blue=ORF Green=Tags(s)

TTTTGTAATACGACTCACTATAGGGCGGCCGGGAATTCGTCGACTGGATCCGGTACCGAGGAGATCTGCC
 GCC**CGGATCGCC**

ATGGCGCCGGTGGGCGGGGGCGGGCCCGGTCGGCGGACCGGCCCGGGCGCCTCCTCTGGCGGCGC
 CGGTGCTGCTGGTGTCTGTGGGCGCTGGGGCCCGGGCCAGGGCAGCCCCAGCAGGGCAGCATCGT
 GGGCATGAGGCTGGCGAGCTGCAACAAGTCGTGTGGGACGAACCCGGATGGCATCATCTTCGTGTCCGAG
 GGCAGCACCGTGAACCTGAGGCTGTACGGCTACAGCTGGGCAACATCTCCAGCAACCTGATCTCCTTCA
 CCGAGGTGGACGATGCCGAGACCCTCCACAAGTCCACCAGCTGCCTCGAGCTACCAAGGACCTGGTCGT
 CCAGCAGCTGGTCAACGTGAGCCGAGGAACACGTCCGGCGTGTGGTGGTGTCTACCAAGTTCTCCGG
 AGGAGCGAGAGCATGAAGCTGTATGCACGTGTGACCCGGGCCAGCCGACGGGCCCTGGCTGAAGTGA
 CGGACAAGGACTCACTGCTTTCATGGTGGAGGAGCTGGGAGGTTCTGCCTCTCTGGTCACATTCT
 CCTAATTACGGTGTCTGGTGTCTGGGCATATTTTCTGGCCTCAACCTCGGGCTTATGGCCCTGGAC
 CCCATGGAGCTGCGCATCGTGCAGAAGTGTGGCACCGAGAAGGAGAGGGCGCTATGCCCGCAAGATTGAGC
 CCATCCGGCGCAAGGGCAACTACCTTCTGCTCGTTGCTCCTAGGGAACGTGCTGGTCAACACCTCCCT
 CACAATCCTTCTAGACAACCTCATCGGGTCCGGCCTCATGGCGGTGGCCTCCTCCACCATGGCATTGTC
 ATCTTTGGGGAGATCCTACCTCAGGCCCTGTGCTCCCGACATGGGCTGGCTGTGGGTGCCAACACCATCC
 TTCTCACCAAATCTTTATGCTACTCACCTTCCCCTCAGTTTTCCCATAGCAAGCTCTGGACTTTTT
 TCTGGGCCAGGAGATTCGCACTGTTTACAACCGGGAAGCTGATGGAGATGTTGAAGGTGACGGAGCCC
 TATAATGACCTCGTGAAGAGGAGCTCAATATGATCCAGGGTCCCTGGAACACGGACCAAACTGTAG
 AGGATATCATGACCCAGCTCCAGGACTGCTTCATGATCCGACGATGCCATCCTGGACTCAACACCAT
 GTCGGAGATAATGGAAAGCGGCTATACTCGCATCCCGGTGTTTGAAGACGAGCAGTCCAATATTGTAGAT
 ATTCTCTACGTCAAAGACTTGGCCTTTGTGGACCCGATGACTGCACCCCTCAAGACTATCACTCGCT
 TCTATAACCACCCGGTGCACCTTTGTCTTCCATGACACCAAGTTGGATGCCATGCTGGAGGAGTTCAAGAA
 GGGGAAGTCCCACCTGGCCATCGTGCAGAAGGTAACAACGAGGGTGGGGTGGCCCTTCTACGAGGTC
 CTGGGCTGGTCAACCCTGGAGGACGTGATCGAGGAGATCATCAAGTCGGAGATCCTGGACGAGTCCGACA
 TGTACTGACAACCGAAGCCGGAAGCGGGTGTCTGAGAAGAACAAGCGTACTTCTCTGCCTTCAAGGA
 TGCGGACAATGAGCTCAAAGTAAAATCTCCCCGAGCTCCTCCTGGCCGCTCATCGCTTCTAGCCACA
 GAGGTCTCTCAGTTTAGCCCTCCTGATATCAGAGAAGATCCTGCTGCGGCTACTCAAGTACCCAGATG
 TCATTCAGGAACCAAGTTTACGAGCACAATAAGTACTACGCCGCCATTACCTGTACACCCGAAATAA
 GCCGGCCGACTACTTCATCCTCATCCTGCAAGGGAAAGGTGGAGGTGGAGGAGGGAAGGAGAATGAAAG
 TTTGAGACGGGCGCCTTCTCCTACTATGGGACTATGGCCCTGACCTCGGTCCCCTCCGACCGTTCCCAG
 CACACCCACCCACTCAGCCGCTCAGCCTCCCTCAGTTACCCAGACCGCACAGAGCTCTCAACTGCAGC
 AACCTTGGCAGGCAGCAGCAACCAAGTTTGGCAGCTCTGTCTGGCCAGTACATCTCTGACTTACAGCGTC
 CGGGCACTCGTGGACTTGCAGTACATCAAGTCACTCGGCAGCAGTACCAGAACGGGCTGCTGGCTTCTC
 GCATGGAGAACAGCCCTCAGTTTCCATAGACGGGTGCACCCACATGGAGAAGTTGGCCGAGAAGTC
 TGAGCTGCCTGTGGTGGACGAGACCACAACCTTCTCAACGAGCGTAACCTTCTGCTGCACAAAGCCTCC
 CACGAGAATGCCATC

ACGCGTACGCGGCCGCTCGAG - GFP Tag - GTTTAA

Protein Sequence: >RG209231 representing NM_020184
 Red=Cloning site Green=Tags(s)

```

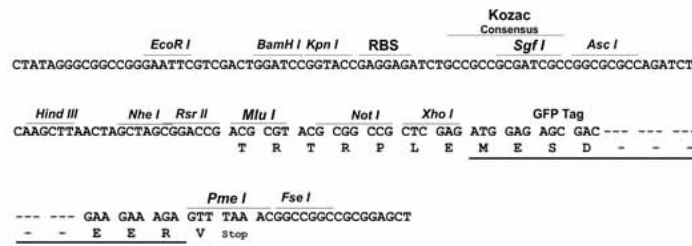
MAPVGGGGRPVGGPARGRLLLAAPVLLVLLWALGARGQGSPQQGTIVGMRLASCNKSCGTNPDGII FVSE
GSTVNLRLYGYSLGNISSNLISFTEVDDAETLHKSTSLELTKDLVVQQLVNVSRRTSGVLVVLTKFLR
RSESMKLYALCTRAQPDGPWLKWTDKDLSLLFMVEEPGRFLPLWLHILLITVLLVLSGIFSGNLGLMAMD
PMELRIVQNCGTEKERRYARKIEPIRRKGNLYLLCSLLLGNVLVNTSLTILLDNLIGSGLMAVASSTIGIV
IFGEILPQALCSRHLAVGANTILLTKFFMLLTFPLSFPISKLLDFFLGQEIRTVYNREKLMEMMLKVTEP
YNDLVKEELNMIQGALELRKTVEIMTQLQDCFMIRSDAILDFNTMSEIMESGYTRIPVFEDEQSNIVD
ILYVKDLAFVDPDDCTPLKTITRFYNHPVHFVFDTKLDAMLEEFKKGKSHLAIVQKVNNEGEGDPFYEY
LGLVTLEDVIEEIIKSEILDESDMYTDNRSRKRVSEKNRDFSAFKDADNELKVKISPQLLLAAHRFLAT
EVSQFSPSLISEKILLRLLKYPDVIQELKFDEHNKYYARHYLYTRNKPADYFILILQGKVEVEAGKENMK
FETGAFSYYGTMALTSVPSDRSPAHTPLSRSASLSYPDRTDVSTAATLAGSSNQFGSSVLQOYISDFSV
RALVDLQYIKITRQQYQNGLLASRMENSPQFPIDGCTTHMENLAEKSELPVVDETTTLLNERNLLHKAS
HENAI
  
```

TRTRPLE - GFP Tag - V

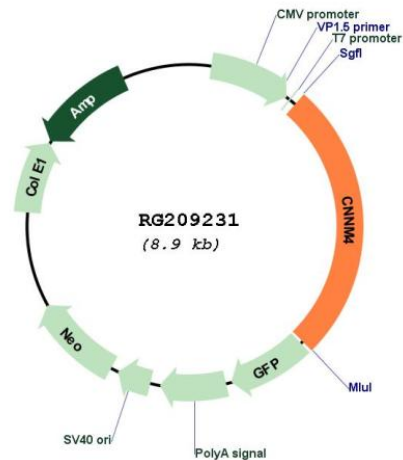
Restriction Sites: SgfI-MluI

Cloning Scheme:

Cloning sites used for ORF Shuttling:



Plasmid Map:



ACCN: NM_020184

ORF Size: 2325 bp

OTI Disclaimer: The molecular sequence of this clone aligns with the gene accession number as a point of reference only. However, individual transcript sequences of the same gene can differ through naturally occurring variations (e.g. polymorphisms), each with its own valid existence. This clone is substantially in agreement with the reference, but a complete review of all prevailing variants is recommended prior to use. [More info](#)

OTI Annotation: This clone was engineered to express the complete ORF with an expression tag. Expression varies depending on the nature of the gene.

Components: The ORF clone is ion-exchange column purified and shipped in a 2D barcoded Matrix tube containing 10ug of transfection-ready, dried plasmid DNA (reconstitute with 100 ul of water).

Reconstitution Method:

1. Centrifuge at 5,000xg for 5min.
2. Carefully open the tube and add 100ul of sterile water to dissolve the DNA.
3. Close the tube and incubate for 10 minutes at room temperature.
4. Briefly vortex the tube and then do a quick spin (less than 5000xg) to concentrate the liquid at the bottom.
5. Store the suspended plasmid at -20°C. The DNA is stable for at least one year from date of shipping when stored at -20°C.

RefSeq: [NM_020184.3](#), [NP_064569.3](#)

RefSeq Size: 4814 bp

RefSeq ORF: 2328 bp

Locus ID: 26504

UniProt ID: [Q6P4Q7](#)

Cytogenetics: 2q11.2

Domains: CBS, DUF21

Protein Families: Transmembrane

Gene Summary: This gene encodes a member of the ancient conserved domain containing protein family. Members of this protein family contain a cyclin box motif and have structural similarity to the cyclins. The encoded protein may play a role in metal ion transport. Mutations in this gene are associated with Jalili syndrome which consists of cone-rod dystrophy and amelogenesis imperfecta. [provided by RefSeq, Feb 2010]