

Product datasheet for **RG209224**

PARP12 (NM_022750) Human Tagged ORF Clone

Product data:

Product Type:	Expression Plasmids
Product Name:	PARP12 (NM_022750) Human Tagged ORF Clone
Tag:	TurboGFP
Symbol:	PARP12
Synonyms:	ARTD12; MST109; MSTP109; ZC3H1; ZC3HDC1
Mammalian Cell Selection:	Neomycin
Vector:	pCMV6-AC-GFP (PS100010)
E. coli Selection:	Ampicillin (100 ug/mL)



[View online »](#)

ORF Nucleotide
Sequence:

>RG209224 representing NM_022750
Red=Cloning site Blue=ORF Green=Tags(s)

TTTTGTAATACGACTCACTATAGGGCGGCCGGGAATTCGTCGACTGGATCCGGTACCGAGGAGATCTGCC
GCCCGCATCGCC

ATGGCCCAGGCCGGCGTCTGTCGGTGTGAGGTACCCAGGTGCTGTGCGCGGCCGGGGCGCCCTGGAGTTGC
CCGAGCTGCGGCCCGCTTTCGGATGGGCTTGTAGCGCCGACGCGCTGGAGCGGCTGCTGCGGCAGCGTGG
GCGCTTCGTGGTGGCGGTGCGGGCGGGCGCGCAGCCGCGGCCCGGAGCGCGTGGTGTGCGCGCCTCG
CCGCTGCGCCTGTGTCGCGCGCACCCAGGGCTCCAAGCCGGGCTGCGTGGGGCTCTGCGCGCAGCTCCACC
TCTGCAGGTTTATGGTCTACGGCGCTGCAAGTTCCTGAGAGCCGGAAGAAGTGTAGGAATAGTCACAG
CTTGACAACCGAACACAACCTGAGTGTGCTGAGAACTCATGGCGTTGACCACCTGAGCTATAATGAGCTA
TGCCAACCTTTGTTTTCAGAACGACCCCTGGCTTTTCCAGAAAATTTGCCAACATTACAACAAAGGAGATG
GACCCACGGCTCTTGTGCCTTTCAAAGCAGTGCATCAAGCTCCATATCTGCCAGTATTTTTTACAGGG
GGATGCAAGTTTGGCACTAGCTGTAAGAGATCCCATGATTTCTCTAATTCTGAGAACTGGAAGAAATTG
GAGAAGTTGGGTATGAGCTCAGACCTGGTGTGAGCAGGCTGCTACCATTTATAGAAATGCACATGACATCA
AGAATAAGAGCTCTGCCCCAGCAGAGTGCCTCCTCTTTTTGTCACAGGGGACTTCTGAAAGAAAAGA
CAGTTCAGGTTCTGTGTCCCAAACTCTTAGCCAGGAGGAGGGTATCAGATCTGTTGTACCATATC
CGGAAAAGTTGTAGCTTTCAAGATAAGTGCCATAGAGTTCATTTCCATTTGCCGTATCGATGGCAATTCT
TGGATAGAGGCAAATGGGAGGATTTGGACAACATGGAACCTATTGAAGAGGCATATTGCAATCCCAAAAT
AGAAAGGATCCTGTGCTCTGAGTCAGCCAGTACCTTTCACTCTCATTGTCTGAACTTTAACGCCATGACT
TACGGTGTACCCAGGCTCGCCGCTCTCCACGGCCTCCTGTACCAAACTCCACACTTCATCCTCA
CCACTGACTGGATTTGGTACTGGAGTGTGAGTTTGGTTCTTGGCAGGAATATGGAAGACAGGGCAGCGT
GCACCCTGTGACCACTGTGAGCAGTAGCGACGTGGAGAAGGCCTACCTGGCCTACTGTACACCGGGGTCT
GACGGCCAGGCAGCCACCTTGAAGTTCAGGCCGAAAGCACAACCTACGAGTTAGATTTCAAAGCCTTCG
TTCAGAAAACTGGTCTATGGCACAACAAAAAGGTTTCCCGCAGACCCAAATACGTGTCTCCCGAGGA
TGTGACGACCATGCAAACCTGCAATACCAAGTTTCCAGGCCGAAAGAGCATCCCAGACTATTGGGACTCC
TCTGCCCTGCCAGACCCAGGCTTTCAGAAATCACCCCTAGTTCTTCTCGGAAGAGTATCAGAAGGTCT
GGAACCTCTTTAACCGCACGCTGCCTTTCTACTTTGTTTTCAGAAAGATTGAGCGAGTACAGAACCTGGCCCT
CTGGGAAGTCTACCAAGTGGCAAAAAGGACAGATGCAGAAGCAGAATGGAGGGAAGGCCGTGGACGAGCGG
CAGCTGTTCCACGGCACCAGCGCCTTTTGTGGACGCCATCTGCCAGCAGAACTTTGACTGGCGGGTCT
GTGGTGTTCATGGCACTTCTACGGCAAGGGGAGCTACTTTGCCCGAGATGCTGCATATCCACCCACTA
CAGCAATCCGACACGCAGACCCACACGATGTTCTGGCCCGGGTGTGTTGGGGGAGTTCGTCAGGGGC
AATGCGTCCTTTGTCCGTCCGCCGGCAAGGAGGGCTGGAGCAACGCCTTCTATGATAGCTGCGTGAACA
GTGTGTCCGACCCCTCCATCTTTGTGATCTTTGAGAAACACCAGGTCTACCCAGAGTATGTCATCCAGTA
CACCACCTCTCAAGCCCTCGGTACACCCTCCATCTGCTGGCCTTGGGCTCCTGTTTACGACGCCGA
CAG

ACGCGTACGCGGCCGCTCGAG - GFP Tag - GTTTAA

Protein Sequence: >RG209224 representing NM_022750
 Red=Cloning site Green=Tags(s)

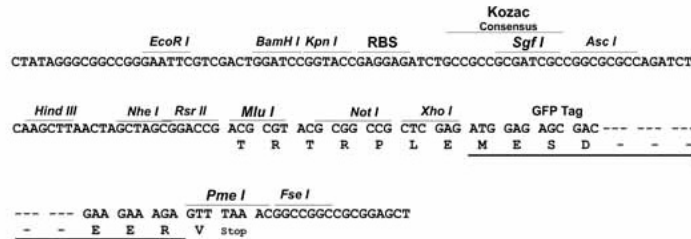
MAQAGVVEVTQVLC AAGGALELPELRRRLRMGLSADALERLLRQRGRFVAVRAGGAAAAPERVVLAAS
 PLRLCRAHQGSKPGCVGLCAQLHLCRFMVYGACKFLRAGKNCRNSHSLTTEHNLVLRTHGVDHLSYNEL
 CQLLFQNDPWLLEICQHYNKGDGPHGSCAFQKQCICKLHCQYFLQGECKFGTSCKRSHDFNSSENLEKL
 EKLGMSSDLVSRLPITYRNAHDIKNKSSAPSRVPPPLFVPQGT SERKDSSGVSVPNTLSQEEGDQICLYHI
 RKSCSFQDKCHR VFHLPYRWQFLDRGWEDLDNMELIEEAYCNPKIERILCSESASTFHSHCLNFNAMT
 YGATQARRLSTASSVTKPPHFILTTDWIYWWSDEFGSWQEYGRQGT VHPVTTVSSSDVEKAYLAYCTPGS
 DGQAATLKFQAGKHNYELDFKAFVQKNLVYGTTKKVCRRPKYVSPQDVTM QTCNTKFPGPKSIPDYWDS
 SALPDPGFQKITLSSSSEYQKVWNLFNRTL PFYFVQKIERVQNLALWEVYQWQKQMQKQNGGKAVDER
 QLFHGTS AIFVDAICQQNFDWRVCGVHGTSYGGKSYFARDAAYSHHYSKSDTQTHMFLARLVGGEFVRG
 NASFVRPPAKEGWSNAFYDSCVNSVSDPSIFVIFEKHQVPEYVIQYTTSSKPSVTPSILLALGSLFSSR
 Q

TRTRPLE - GFP Tag - V

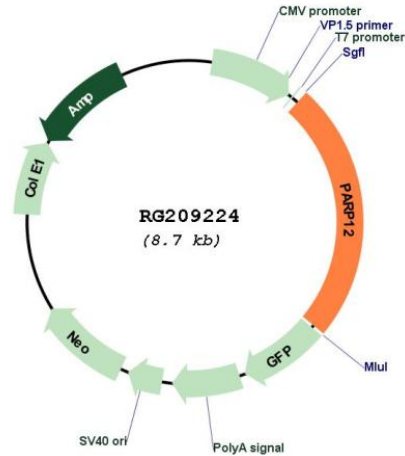
Restriction Sites: SgfI-MluI

Cloning Scheme:

Cloning sites used for ORF Shutting:



Plasmid Map:



ACCN: NM_022750

ORF Size: 2103 bp

OTI Disclaimer: Due to the inherent nature of this plasmid, standard methods to replicate additional amounts of DNA in E. coli are highly likely to result in mutations and/or rearrangements. Therefore, OriGene does not guarantee the capability to replicate this plasmid DNA. Additional amounts of DNA can be purchased from OriGene with batch-specific, full-sequence verification at a reduced cost. Please contact our customer care team at custsupport@origene.com or by calling 301.340.3188 option 3 for pricing and delivery.

The molecular sequence of this clone aligns with the gene accession number as a point of reference only. However, individual transcript sequences of the same gene can differ through naturally occurring variations (e.g. polymorphisms), each with its own valid existence. This clone is substantially in agreement with the reference, but a complete review of all prevailing variants is recommended prior to use. [More info](#)

OTI Annotation: This clone was engineered to express the complete ORF with an expression tag. Expression varies depending on the nature of the gene.

Components: The ORF clone is ion-exchange column purified and shipped in a 2D barcoded Matrix tube containing 10ug of transfection-ready, dried plasmid DNA (reconstitute with 100 ul of water).

Reconstitution Method:

1. Centrifuge at 5,000xg for 5min.
2. Carefully open the tube and add 100ul of sterile water to dissolve the DNA.
3. Close the tube and incubate for 10 minutes at room temperature.
4. Briefly vortex the tube and then do a quick spin (less than 5000xg) to concentrate the liquid at the bottom.
5. Store the suspended plasmid at -20°C. The DNA is stable for at least one year from date of shipping when stored at -20°C.

RefSeq: [NM_022750.2](#), [NP_073587.1](#)

RefSeq Size: 3805 bp

RefSeq ORF: 2106 bp

Locus ID: 64761

UniProt ID: [Q9H0J9](#)

Cytogenetics: 7q34

Domains: zf-CCCH

Gene Summary: Mono-ADP-ribosyltransferase that mediates mono-ADP-ribosylation of target proteins. [UniProtKB/Swiss-Prot Function]