

Product datasheet for **RG209210**

STK31 (NM_031414) Human Tagged ORF Clone

Product data:

Product Type:	Expression Plasmids
Product Name:	STK31 (NM_031414) Human Tagged ORF Clone
Tag:	TurboGFP
Symbol:	STK31
Synonyms:	SGK396; TDRD8
Mammalian Cell Selection:	Neomycin
Vector:	pCMV6-AC-GFP (PS100010)
E. coli Selection:	Ampicillin (100 ug/mL)
ORF Nucleotide Sequence:	>RG209210 representing NM_031414 Red=Cloning site Blue=ORF Green=Tags(s)

TTTTGTAATACGACTCACTATAGGGCGGCCGGAATTCGTCGACTGGATCCGGTACCGAGGAGATCTGCC
GCC**CGATCGCC**

ATGTGGGTCCAGGGTCACTCTTCTAGAGCTTCCGCAACGGAAAGTGTGAGTTTTTCAGGAATTGTTCAA
TGGATGAAGATACACATTACGATAAAGTGAAGATGTGGTTGGAAGTACATAGAAGATGCAGTAACATT
TTGGGCCAGAGTATCAATAGAAATAAGGATATCATGAAGATTGGTTGCTCACTGTCTGAAGTTTGGCCC
CACGCCAGTTCAGTTTTGGGGAATCTTGACCCAAACAAGATTTATGGTGGATTATTTCTGAAGATCAGT
GTTGGTACAGATGCAAAGTACTGAAATCATCAGCGTTGAAAAGTGTCTGGTGGAGTACATTGACTATGG
AAATACTGAAATCTAAATCGATCTGATATAGTTGAAATTCCTTTGGAGCTGCAGTTTTCTAGTGTGCC
AAAAAGTATAAACTTTGGGGACTACACATTCCTTCTGATCAAGAAGTTACCCAGTTTGATCAGGGCACAA
CCTTTTTGGGGAGCTTGATTTTTGAAAAGGAAATAAAAATGAGAAATTAAGCAACCTCTGAAGATGGAAC
AGTTATTGCTCAGGCTGAGTATGGCAGTGTGGATATAGGGGAAGAGGTGCTTAAGAAAGGATTTGCAGAG
AAATGCAGACTTGCTTCCAGAAGTACATCTGTGAGGAAAAAATTGGATCCTGGTCAACTTGTCTCA
GGAACCTCAAAGCCCCATTCTTTGTGGGGCATAGATCAAACAGTCAACCTTCAGCAGGCCAAAGGG
GCACCTTAAGTGAGAAAATGACTCTTGAAGTGAAGGATGAAAATGATGCAGGCAATCTATAACATTTCCA
AAGGAAAGTTTGGCTGTTGGTGACTTTAATTTAGGGTCTAACGTGAGCCTGGAAAAAATTAAAGCAGGACC
AGAAACTGATTGAAGAAAATGAAAACTTAAACAGAGAAGGACGCTCTTCTTGAAGTTATAAGGCGTT
AGAATTGAAAGTAGAGCAGATTGCCAGGAGCTGCAGCAAGAGAAGGCAGCTGCTGTGGATTTGACTAAC
CACTTAGAATACACTCTGAAGACCTATATAGATACCAGAATGAAAAATCTGGCAGCTAAGATGGAATAC
TGAAAGAAATGAGGCATGTCGACATCAGTGTCCGTTTCGGAAAAGACCTTCAGATGCTATAACAAGTGT
GGATGAAGGGTGTCTTACTACTCCAGTCTTTGAATGGATTAGAGATAATATGGCAGAATACAGTCTG
GCTCAGGAGAATATTAACCTTGTGAATATGTGAGTGAAGGGAATTTTTGATTGCCAAAGAAATGAA
TGCAGCAGAAGCTGTACATGTCAGTAGAAGATTTATTCTGGAAGTTGATGAGTCATCTTAATAAACG
CTTAACAAACATTGCAGGATTTGTCAGTCTTTAGAAGCAGTGTATGGACAAGCCAAAGAAGGAGCAAAT



[View online »](#)

TCTGATGAAATACTTAAAAATTTTATGACTGGAAGTGTGATAAAAAGAGAGGAGTTCACCAAGTGTAGAA
 GTGAAACAGACGCTTCTCTGCACCGTCTTGTAGCATGGTTCAAAAGAACCTTAAAGGTTTTTGACCTATC
 TGTGGAAGGATCACTGATTTTCAAGAGACGCAATGGATAATATTGATGAAATCCTAGAGAAGACTGAGTCA
 AGTGTCTGCAAAGAGCTGGAGATAGCTCTGGTTGATCAAGGTGATGCAGACAAGGAGATAATTTCAAATA
 CATATAGTCAAGTACTGCAAAGATTTCATTAGAGGAAAGGCTCATTGCCACAGTACAAGCTAAGTACAA
 GGACAGTATTGAGTTTAAAAAGCAGCTTATTGAATATTTAAATAAGAGTCCCAGTGTGGATCACTTGCTA
 TCCATTAAGAAGACATTGAAAAGCTTAAAAGCTTAACTACTCAGATGGAAATGGTTGAAAAGAGTAATTTGG
 AAGAGTCAGATGATCCTGATGGCTCTCAAATTGAGAAAAAAAAGAAATAAAGTCAAGCTGCGCAATAA
 TGTCTTTTCAAGAAATTTATCATGAGAGAGAGGAATATGAGATGCTAACTAGTTTGGCACAGAAATGGTTC
 CCTGAGCTGCCTCTGCTTCATCCTGAAATAGGATTACTCAAATACATGAACTCTGGTGGTCTCCTTACAA
 TGAGCTTGAACGAGATCTTCTGATGCTGAGCCATGAAGGAAGTTCAGCAGCAAGCGTCTTTGGTACG
 TTCTGAGGTTAATGGGCAGATAATTCTGTTAAAGGGCTATTCTGTGGATGTTGACACAGAAGCCAAGGTG
 ATTGAGAGAGCAGCCACCTACCATAGAGCTTGGAGAGAAGCTGAAGGAGACTCAGGGTACTGCCATTGA
 TATTCCTGTTTTATGTAAGTCTGATCCTATGGCTTATCTGATGGTCCCATACTACCTAGGGCAAACCT
 GAATGCTGTTCAAGCCAACATGCCTTTAAATTCAGAAGAACTTTAAAGGTCATGAAAGGTGTTGCCAG
 GGCTCTGCATACATTGCATAAGGCTGACATAATTCATGGATCACTTCATCAGAACAATGTATTTGCTTTAA
 ACCGTGAACAAGGAATTGTTGGAGATTTGACTTCACCAATCTGTGAGTCAAGCAGCCTCGGTGAACAT
 GATGGTTGGTGAAGTGTGATGTCACCTGAGTTGAAAATGGGAAAACCTGCTTCTCCAGGTTGAGAC
 TTATATGCTTATGGCTGCCTCTTATTATGGCTTCTGTTCAAATCAGGAGTTTGGAGATAAATAAAGATG
 GAATCCCCAAAGTGGATCAGTTTCATCTGGATGATAAAGTCAAATCCCTCCTCTGTAGCTTGATATGTTA
 TAGAAGTTCAATGACTGCTGAACAAGTTTTAAATGCTGAATGTTTCTGATGCCAAGGAGCAATCAGTT
 CCAAACCCAGAAAAGATACTGAATACACCCTATATAAAAAGGAAGAAGAAATAAAGACGGGAGAAGTTGG
 ATAAATGTATGGAGAAGACAAGAAATGGTGAAGCCAACCTTGTATTGT

ACGCGTACGCGGCCGCTCGAG – GFP Tag – GTTTAA

Protein Sequence:

>RG209210 representing NM_031414
 Red=Cloning site Green=Tags(s)

MWVQGHSSRASATESVSFSGIVQMEDDTHYDKVEDVVGSHIEDAVTFWAQSIINRNDIMKIGCSLSEVCP
 HASSVLGNLDPNKIYGLFSEDQCWYRCKVLKIIISVEKCLVRYIDYGNTEILNRS DIVEIPLLELQFSSVA
 KKYKWLGLHIPSDQEVTFDQGTFLGSLIFEKEIKMRKATSEDTGVIQAQAYGSVDIGEEVLKGF AE
 KCRLASRTDICEEKLDPGQLVLRNLKSPIPLWGHRSNQSTFSRPKGHLSEKMTLDLKDENDAGNLITFP
 KESLAVGDFNLGSNVSLEKIKQDQKLEENEKLTTEKDALLESYKALELQVEQIAQELQQEKAAAVDLTN
 HLEYTLKTYIDTRMKNLAAKMEILKEMRHVDISVRF GKDLSDAIQVLDEGCF TTPASLNGLEIIWAEYSL
 AQENIKTCEYVSEGNILIAQRNEMQQKLYMSVEDF ILEVDESSLNKRKLTQLDLSVSLEAVYQAKEGAN
 SDEILKKFYDWKCDKREEFTSVRSETDASLHRLVAWFQRTLKVFDSLVEGSLISEDAMDNIIDEILEKTES
 SVCKELEIALVDQGDADKEIISNTYSQVLQKIHSEERLIATVQAKYKDSIEFKKQLIEYLNKSPSVDHLL
 SIKKTLKSLKALLRWKLVEKSNLEE SDDPDGSQIEKIKEEITQLRNNVFQEIYHEREEYEMLTSLAQKWF
 PELPLLHPEIGLLKYMNSGGLLTMSLERDLLDAEPMKELSSKRPLVRSEVNGQIILLKGYSDVDTEAKV
 IERAATYHRAWREAEGDSGLLPLIFLFLCKSDPMAYLMPYYPANLNAVQANMPLNSEETLKVMKGVAQ
 GLHTLHKADIHGS LHQNNVFALNREQIGVDFDFTKSVSQRASVNMVGDLSLMSPELKMKGKSPASPGSD
 LYAYGCLLLWLSVQNQEF EINKDGI PKVDQFHLLDDKVKSL L CSLICYRSSMTAEQVLNAECFLMPKEQSV
 PNPEKDTEYTLYKKEEIKTENLDKCMKTRNGEANFDC

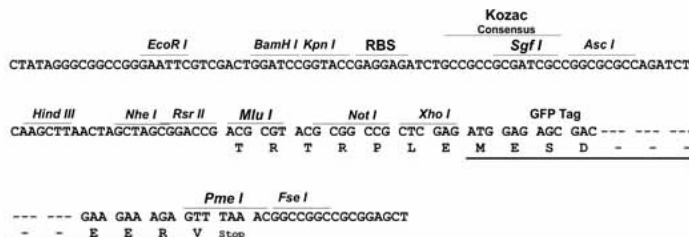
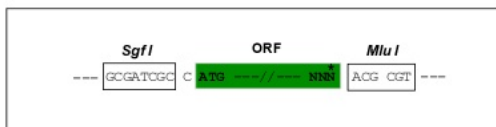
TRTRPLE – GFP Tag – V

Restriction Sites:

Sgfl-MluI

Cloning Scheme:

Cloning sites used for ORF Shutting:


ACCN: NM_031414

ORF Size: 3057 bp

OTI Disclaimer: The molecular sequence of this clone aligns with the gene accession number as a point of reference only. However, individual transcript sequences of the same gene can differ through naturally occurring variations (e.g. polymorphisms), each with its own valid existence. This clone is substantially in agreement with the reference, but a complete review of all prevailing variants is recommended prior to use. [More info](#)
OTI Annotation: This clone was engineered to express the complete ORF with an expression tag. Expression varies depending on the nature of the gene.

Components: The ORF clone is ion-exchange column purified and shipped in a 2D barcoded Matrix tube containing 10ug of transfection-ready, dried plasmid DNA (reconstitute with 100 ul of water).

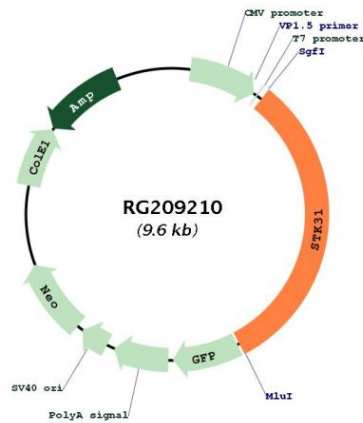
Reconstitution Method:

1. Centrifuge at 5,000xg for 5min.
2. Carefully open the tube and add 100ul of sterile water to dissolve the DNA.
3. Close the tube and incubate for 10 minutes at room temperature.
4. Briefly vortex the tube and then do a quick spin (less than 5000xg) to concentrate the liquid at the bottom.
5. Store the suspended plasmid at -20°C. The DNA is stable for at least one year from date of shipping when stored at -20°C.

RefSeq: [NM_031414.2](#), [NP_113602.2](#)
RefSeq Size: 3244 bp

RefSeq ORF:	3060 bp
Locus ID:	56164
UniProt ID:	<u>Q9BXU1</u>
Cytogenetics:	7p15.3
Protein Families:	Druggable Genome, Protein Kinase
Gene Summary:	This gene is similar to a mouse gene that encodes a putative protein kinase with a tudor domain, and shows testis-specific expression. Alternative splicing results in multiple transcript variants encoding different isoforms. [provided by RefSeq, Jul 2008]

Product images:



Circular map for RG209210