

Product datasheet for **RG209193**

CASD1 (NM_022900) Human Tagged ORF Clone

Product data:

Product Type:	Expression Plasmids
Product Name:	CASD1 (NM_022900) Human Tagged ORF Clone
Tag:	TurboGFP
Symbol:	CASD1
Synonyms:	C7orf12; NBLA04196; SOAT
Mammalian Cell Selection:	Neomycin
Vector:	pCMV6-AC-GFP (PS100010)
E. coli Selection:	Ampicillin (100 ug/mL)



[View online »](#)

ORF Nucleotide Sequence:

>RG209193 representing NM_022900
 Red=Cloning site Blue=ORF Green=Tags(s)

TTTTGTAATACGACTCACTATAGGGCGGCCGGAATTCGTCGACTGGATCCGGTACCGAGGAGATCTGCC
 GCC**CGCATCGCC**

ATGGCGGCTCTGGCCTACAACCTGGCAAGCGGGAGATCAACCACTACTTCAGCGTGAGGAGCGCCAAGG
 TGCTGGCGCTGGTGGCCGTGCTGCTGCTCGCAGGTGCCACCTCGCCTCCGCGCTACCGAGGCAATGA
 TTCGTGTGAATACCTTCTCAAGTGGCAGATTTCTGGAGAGAAAGTTGGCAACCTCACAGTTGTATG
 ATGCATAAATACAAAATCAGTGAAGCAAAGAACTGCCTGTAGATAAACATATTGCATTTATTGGAGATT
 CCAGAATTCGTC AATTGTTTTATTCTTTTGTAAAAATAATTAATCCCAATTCAAAGAAGAAGGAAATAA
 GCATGAAAACATTCCTTTTGAAGACAAGACTGCATCAGTTAAAGTGGATTTTCTGTGGCATCCTGAAGTT
 AATGGTCTATGAAACAGTGTATCAAAGTGTGGACTGAGGATTCATTGCAAAGCCACATGTGATTGTAG
 CAGGAGCTGCCACATGGTCCATCAAGATTCACAATGGTAGCAGTGAAGCGCTTTCTCAATATAAAATGAA
 CATCACCTCCATAGCACCACTTTTGA AAAAATTGGCAAAGACTAGTGATGTTTATTGGGTCTTACAAGAT
 CCTGTTTATGAAGATCTATTAAGTGAAAATAGGAAGATGATCACTAATGAGAAGATAGATGCTTACAATG
 AAGCTGCAGTCAGTATTTTGAATAGTAGCACCAGAAAATCTAAATCAAATGTTAAGATGTTCAAGTGTTC
 CAAATTAATTGCTCAAGAAACCATCATGGAATCTTTGGATGGCTTACATCTTCTGAATCGAGCAGAGAA
 ACTACTGCAATGATTCTTATGAATGTGTATTGCAATAAGATTTTGAAGCCTGTAGATGGGTCCTGTTGTC
 AACCTCGGCCCTCTGTTACTCTCATACAGAAGCTAGCTGCTTGTTTTTCACTTTATCTATTATCGGATA
 TTTAATTTTTTACATAATTCATCGTAATGCTCATCGGAAGAATAAGCCGTGACTGATTTGGAAAGTGGAA
 GAGGAAAAGAAAAATATTATCAATACCCTGTGTCTTATTAGAAATACTTTTACAATCTTTCTGCAAAAC
 TTGGCCTGATTATGGCATATTTCTATATGTGTGACAGTGC AAATCTGTTTCATGAAGGAAAACAAAATTTTA
 TACACATTCATCTTTCTTTATTCCAATTATCTACATTTTGGTTTTGGGAGTATTTTATAATGAAAATACT
 AAAGAGACTAAAGTATTAATAGAGAACAACAGACGAATGGAAGGCTGGATGCAACTGTGATTTTGA
 TTTATCACATTTCTGGAGCAAGTACATTTTGCCTGTATACATGCACATTCGAGTTCTGGTTGCTGCATA
 TTTATTTTACAGACAGGTATGGGCATTTCTCATACTTTTGGATAAAAAGGAGATTTTGGAACTACAGAGTA
 TGTCAGGTTTTATTTCTGCTCAATTTCTGGTAGTGGTGTATGTATAGTAATGGATCGACCTTATCAAT
 TCTATTACTTTGCCCCCTGGTCACTGTATGGTTCATGGTCATATATGTTACTTTAGCACTATGGCCACA
 AATAATCCAAAAAAGCAAACGGAAATGTTTCTGGCATTGGCTTACTGTTGAAACTAGGCTTTTTTG
 CTGTTATTCATATGTTTTTGGCATATTCTCAGGGTGCATTTGAGAAGATCTTTTCTTTGGCCATTGT
 CCAAGTGTTTTGAAGTGAAGGGGAATGTATATGAATGGTGGTTCAGATGGAGGTTAGACCGTTATGTAGT
 TTTCCACGGAATGCTGTTTGCTTTTATTATCTGGCCTTGCAAGAAGCGTCAAATACTTTCTGAAGGAAAG
 GGTGAACCTCTTTTTTCAAACAAAATTTCAAATTTCTGTTGTTATTTTCAAGTAGTTTCTTTCTTGACCT
 ATTCATCTGGGCTAGCAGTTGTAAAAACAAAGCAGAGTGCAATGAACTCCATCCGTCTGTTTCTGTGGT
 ACAGATTTTAGCCTTCATCTAATAAGAAAACATCCCTGGATATGCCCGTTCAGTTTACAGTTTCAATTTTT
 GCTTGGTTTGGAAAAATTCATTAGAGCTATTTATTTGCCAGTATCACATATGGCTGGCAGCGGACACAA
 GGGGTATCTTGGTACTGATACCTGGAAACCCTATGCTCAACATCATTGTCAGCACTTTTCAATTTGTTTG
 TGTGGCACATGAAATTTCTCAGATCACTAATGATCTTGCACAGATTATTATTCTAAAGATAAAGTCACTCT
 CTCTTGAAGGTTGGCATGTATAGCTGCATTTTTTTGTGGACTCCTCATCTTATCATCCATTCAAGATA
 AATCAAAACAT

ACGCGTACGCGGCCGCTCGAG – GFP Tag – GTTTAA

Protein Sequence: >RG209193 representing NM_022900
Red=Cloning site Green=Tags(s)

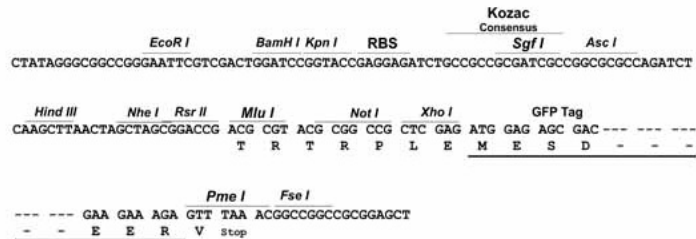
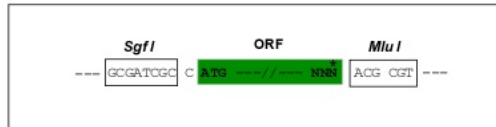
MAALAYNLGKREINHYFSVRSKVLALVAVLLLAACHLASRRYRGNDSCHEYLLSSGRFLGEKVVWQPHSCM
MHKYKISEAKNCLVDKHIAFIGDSRIRQLFYFVKIINPQFKEEGNKHENIPFEDKTASVKVDLWHPEV
NGSMKQCIKVVWTEDESIKPHVIVAGAATWSIKIHNGSSEALSQYKMNITSIAPLLEKLAKTSDVYVWLQD
PVYEDLLSENRMITNEKIDAYNEAAVSILNSSTRNSKSNVKMFSVSKLIAQETIMESLDGLHLPESRE
TTAMILMNVCNKILKPVDSGCCQPRPPVTLIQKLAACFFTLIIIGYLIFYIIHRNAHRKNKPCDLESG
EEKNIINTPVSSLEILLQSFKLGLIMAYFYMCDSANLFMKENKFYTHSSFFIPIIYILVLGVFYNT
KETKVLNREQTDEWKGMQLVILYHISGASTFLPVYMHIRVLAAYLFQTGYGHFSYFWIKGDFGIYRV
CQVLFRLNFLVVVLCIVMDRPFYFYFVPLVTWFMVIYVTLALWPQIIQKKANGNCFWHFGLLLKLGFL
LLFICFLAYSQGAFEKIFSLWPLSKCFELKGNVYEWFRWRLDRYVVFHGMFAFIYLALQKRQILSEGK
GEPLFSNKISNLLFISVVSFLTYSIWASSCKNKAECNELHPSVSVVQILAFILIRNIPGYARSVYSSFF
AWFGKISLELFICQYHIWLAADTRGILVLIIPGNPMLNIIIVSTFIFVCAHEISQITNDLAQIIIPKDSS
LLKRLACIAAFFCGLLILSSIQDKSKH

TRTRPLE - GFP Tag - V

Restriction Sites: Sgfl-MluI

Cloning Scheme:

Cloning sites used for ORF Shutting:



- ACCN:** NM_022900
- ORF Size:** 2391 bp
- OTI Disclaimer:** The molecular sequence of this clone aligns with the gene accession number as a point of reference only. However, individual transcript sequences of the same gene can differ through naturally occurring variations (e.g. polymorphisms), each with its own valid existence. This clone is substantially in agreement with the reference, but a complete review of all prevailing variants is recommended prior to use. [More info](#)
- OTI Annotation:** This clone was engineered to express the complete ORF with an expression tag. Expression varies depending on the nature of the gene.
- Components:** The ORF clone is ion-exchange column purified and shipped in a 2D barcoded Matrix tube containing 10ug of transfection-ready, dried plasmid DNA (reconstitute with 100 ul of water).

Reconstitution Method:

1. Centrifuge at 5,000xg for 5min.
2. Carefully open the tube and add 100ul of sterile water to dissolve the DNA.
3. Close the tube and incubate for 10 minutes at room temperature.
4. Briefly vortex the tube and then do a quick spin (less than 5000xg) to concentrate the liquid at the bottom.
5. Store the suspended plasmid at -20°C. The DNA is stable for at least one year from date of shipping when stored at -20°C.

RefSeq: [NM_022900.3](#), [NP_075051.3](#)

RefSeq Size: 3883 bp

RefSeq ORF: 2394 bp

Locus ID: 64921

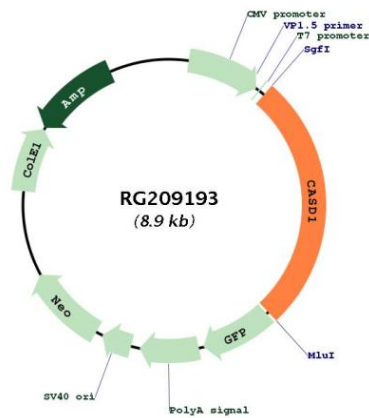
UniProt ID: [Q96PB1](#)

Cytogenetics: 7q21.3

Protein Families: Transmembrane

Gene Summary: O-acetyltransferase that catalyzes 9-O-acetylation of sialic acids (PubMed:20947662, PubMed:26169044). Sialic acids are sugars at the reducing end of glycoproteins and glycolipids, and are involved in various processes such as cell-cell interactions, host-pathogen recognition (PubMed:20947662, PubMed:26169044).[UniProtKB/Swiss-Prot Function]

Product images:



Circular map for RG209193