

Product datasheet for **RG209179**

FAM133B (NM_001040057) Human Tagged ORF Clone

Product data:

Product Type: Expression Plasmids
Product Name: FAM133B (NM_001040057) Human Tagged ORF Clone
Tag: TurboGFP
Symbol: FAM133B
Mammalian Cell Selection: Neomycin
Vector: pCMV6-AC-GFP (PS100010)
E. coli Selection: Ampicillin (100 ug/mL)
ORF Nucleotide Sequence: >RG209179 representing NM_001040057
 Red=Cloning site Blue=ORF Green=Tags(s)

TTTTGTAATACGACTCACTATAGGGCGGCCGGAATTCGTCGACTGGATCCGGTACCGAGGAGATCTGCC
 GCC**CGATCGCC**

ATGAACCCAATAGCAATGGCGAGATCAAGGGTCCAATCCAGTCTTCAGGGCCAACAATACAGGATTATC
 TGAATCGACCAAGGCCTACCTGGGAAGAAGTAAAAGAGCAACTAGAAAAGAAAAGAAAGGCTCCAAGGC
 TTTGGCTGAATTTGAAGAAAAATGAATGAGAAGTGAAGAAAGAACTGGAAAAACACAGGGAGAAATTG
 TTAAGTGAAGTGAGAGCTCATCAAAAAAGACAGAGAAAGAAAAGAAAAGAAAGAAATCTGGTAGGT
 ATTCATCTTCTTCTCATCAAGCTCTGATTCTTCCAGCAGTCTTCTGATTCTGAAGATGAGGATAAGAA
 ACCAAGGAAAACGGAGAAAAGAAAAGAAAGAACCGTTCACATAAATCTTCTGAAAGCTCCATGTCAGAACT
 GAATCAGACAGTAAGGATAGTTTAAAAAGAAAAGAAAGTCAAAAAGATGGAAGTGAAGAAAAGGATA
 TTAAGGACTCAGCAAAAAGAGAAAGATGTATTCTGAAGATAAACCTTTATCATCTGAGTCTTGTGAGA
 ATCAGAGTATATTGAGGAGGTGCGAGCAAAAAGAAAGAAAGCAGTGAAGAACGAGAAAAGCAACAGAA
 AAAACAAAAGAAAAGAAAGCATAAGAAACACAGTAAGAAGAAGAAAAGAAAGGCTGCTAGTTCAGTCT
 CTGACTCACCA

ACGCGTACGCGGCCGCTCGAG - GFP Tag - GTTTAA

Protein Sequence: >RG209179 representing NM_001040057
 Red=Cloning site Green=Tags(s)

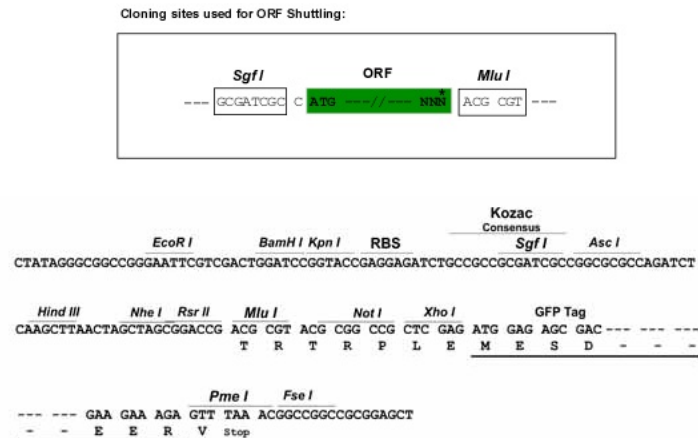
MNPIAMARSRGPIQSSGPTIQDYLNRPRTWEEVKEQLEKKKKGSKALAEFEKMNENWKKELEKHREKL
 LSGSESSKKRQRKKKKEKSSGRYSSSSSSSDSSSSSDSEDEDKKQKRRKKKKNRSHKSSSESSMSET
 ESDSKDSLKKKSKDGTEKEKDIKGLSKRKMYSSEDKPLSSESLSESEYIEEVRAKSKKSEEREKATE
 KTKKKKHKHSHKSKKKAASSPDSP

TRTRPLE - GFP Tag - V



Restriction Sites: SgfI-MluI

Cloning Scheme:



ACCN: NM_001040057

ORF Size: 711 bp

OTI Disclaimer: The molecular sequence of this clone aligns with the gene accession number as a point of reference only. However, individual transcript sequences of the same gene can differ through naturally occurring variations (e.g. polymorphisms), each with its own valid existence. This clone is substantially in agreement with the reference, but a complete review of all prevailing variants is recommended prior to use. [More info](#)

OTI Annotation: This clone was engineered to express the complete ORF with an expression tag. Expression varies depending on the nature of the gene.

Components: The ORF clone is ion-exchange column purified and shipped in a 2D barcoded Matrix tube containing 10ug of transfection-ready, dried plasmid DNA (reconstitute with 100 ul of water).

Reconstitution Method:

1. Centrifuge at 5,000xg for 5min.
2. Carefully open the tube and add 100ul of sterile water to dissolve the DNA.
3. Close the tube and incubate for 10 minutes at room temperature.
4. Briefly vortex the tube and then do a quick spin (less than 5000xg) to concentrate the liquid at the bottom.
5. Store the suspended plasmid at -20°C. The DNA is stable for at least one year from date of shipping when stored at -20°C.

RefSeq: [NM_001040057.3](#)

RefSeq Size: 2468 bp

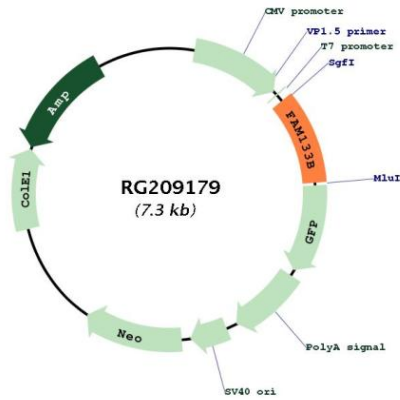
RefSeq ORF: 714 bp

Locus ID: 257415

UniProt ID: [Q5BKY9](#)

Cytogenetics: 7q21.2

Product images:



Circular map for RG209179