

## Product datasheet for **RG209168**

### **PGM2L1 (NM\_173582) Human Tagged ORF Clone**

#### **Product data:**

Product Type:	Expression Plasmids
Product Name:	PGM2L1 (NM_173582) Human Tagged ORF Clone
Tag:	TurboGFP
Symbol:	PGM2L1
Synonyms:	BM32A; PMMLP
Mammalian Cell Selection:	Neomycin
Vector:	pCMV6-AC-GFP (PS100010)
E. coli Selection:	Ampicillin (100 ug/mL)



[View online »](#)

**ORF Nucleotide Sequence:**

>RG209168 representing NM\_173582  
 Red=Cloning site Blue=ORF Green=Tags(s)

TTTTGTAATACGACTCACTATAGGGCGGCCGGAATTCGTCGACTGGATCCGGTACCGAGGAGATCTGCC  
 GCC**CGGATCGCC**

ATGGCTGAAAACACAGAGGGGATCTGAACTCCAACCTGCCCCACGCCCCCTACCACACCGGGGACCTC  
 AGCTGGACACGGCCATCGGGCAGTGGCTCCGCTGGGATAAGAATCCCAAAACAAAAGAGCAGATTGAAAA  
 CCTGTTACGGAATGGGATGAACAAGGAGCTGCGAGATCGTCTTTGTTGCCGAATGACTTTTGGGACTGCA  
 GGACTTCGTTCTGCCATGGGGCAGGGTTTTGCTATATTAATGACCTTACAGTAATACAGTCAACACAGG  
 GGATGTACAAATACCTTGAGAGATGTTTCTCAGACTTCAAGCAGAGAGGCTTTGTGGTTGGGATGACAC  
 TCGGGGTCAAGTAACTAGCAGCTGCAGCAGCCAGAGGCTTGCTAACTACTGCTGCAGTCTTGCTGGCC  
 AAAGATGTTCTGTACCTTTTTCAAGATATGTTCTACACCTTTGTACCATATGCAGTTCAGAAGC  
 TCAAAGCAGTTGCAGGTGTGATGATTACTGCCTCTCACAACCGCAAGGAACAATGGATACAAGGTTTA  
 CTGGGAACTGGTCTCAGATCACATCTCCTCATGATAAAGAAATCTAAAATGTATAGAAGAATGTGTG  
 GAACCCTGGAATGGTTCCTGGAATGATAATTTAGTGGATACCAGCCCGCTGAAGAGAGACCTCTGCAGG  
 ACATTTGCAGGAGATACATGGAAGATCTGAAAAAGATCTGTTTTTACAGGGAGTTAAACTCGAAGACCAC  
 CTTGAAATTTGTGCACACATCTTTTCATGGGGTCCGACATGACTATGTGCAGTTGGCTTTTAAAGTGTTT  
 GGTTTTAAAGCCTCCAATTCAGTACCAGAACAAAAAGATCCTGATCCAGACTTTTCTACCGTTAAATGTC  
 CAAATCCTGAAGAAGGAGAATCTGTGCTGGAACTTTCTTGAGACTGGCAGAGAAAAGAAATGCCCGGGT  
 AGTGCTAGCCACAGATCCTGATGCAGACAGACTGGCAGCAGCAGAACTCAGGAGAATGGTTGTTGAAA  
 GTTTTACAGGGAATGAGTTGGCAGCTTTGTTGGATGGTGGATGTTGATTGCTGGAAGAAAAATAAT  
 CAAGAAATGCTGATGTGAAGAACGTTTATATGTTAGCCACCAGTCTCTTCTAAAATTCGAAGGCAAT  
 TGCACTTAAAGAAGGATTTCAATTTTGAAGAAACATTACCAGTTTTTAAATGGATTGGAAGTAGGATAATA  
 GACCTCTGGAATAAGGAAAGAGTCTTTTTGCATTTGAAGAGTCTATTGGTTTTCTCTGTGGAACCT  
 CAGTTTTGGATAAAGATGGGGTGAAGTGCAGCTGTTGTGTTGCTGAGATGGCATCTTACCTGAAACCAT  
 GAATATAACATTGAAACAGCAACTGGTTAAGGTTTATGAAAAATATGGTTATCATATTTCAAAAACCTCC  
 TATTTCTGTGTTATGAACCACCTACCATCAAAAGTATATTTGAAAGGCTTCGTAATTTTGATTCTCCAA  
 AAGAATATCCAAAATTTGTGGAACATTTGCTATATTGCATGTACGGACATTACCCTGGATATGACAG  
 TAGCCAGCCTAATAAGAAATCAGTGTGCTGTGAGTAAAAACAGCCAAATGATTACATTTACTTTTCAA  
 AATGGCTGTGTTGCTACCCTTCGACAAGCGGAACAGAACCAAGATAAAGTATTATGCAGAGATGTGTG  
 CGTCACCTGACCAGAGTGACACTGCTTTACTGGAGGAAGAACTGAAGAAACTCATTGATGCTCTGATAGA  
 GAATTTCTTCAGCCTAGTAAGAATGGACTGATCTGGCGTTCTGTT

**ACGCGT**ACGCGGCCGCTCGAG – GFP Tag – GTTTAA

**Protein Sequence:**

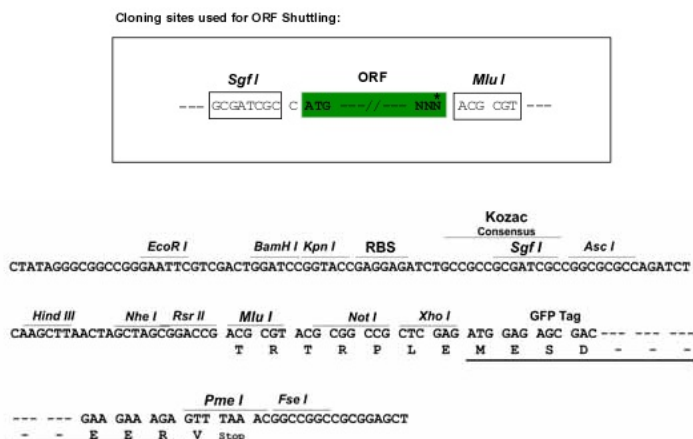
>RG209168 representing NM\_173582  
 Red=Cloning site Green=Tags(s)

MAENTEGDLNSLPHAPYHTGDPQLDTAIGQWLRWDKNPKTKEQIENLLRNGMKNELRDRLCCRMTFGTA  
 GLRSAMGAGFCYINDLTVIQSTQGMKYLERCFSDFKQRGFVVGVDTRGQVTSSCSSQLAKLTAAVLLA  
 KDVPVYLFSTRYVPTFPVYAVQKLKAVAGVMITASHNRKEDNGYKVVYETGAQITSPHDKEILKCIIECV  
 EPWNGSWNDNLVDTSPDKRDPLQDICRRYMEDLKKICFYRELNSKTTLKFVHTSFHGVGHYVQLAFKVF  
 GFKPPIPVPEQKDPDPDFSTVKCPNPEEGESVLELSLRLAEKENARVVLATDPDADRLAAAEQENGCKW  
 VFTGNELAAALFGWWMFDCWKKNSRNADVKNVYMLATTVSSKILKAIKALKEGFHFEETLPGFKWIGSRII  
 DLLENGKEVLF AFEESI GFLCGTSVLDKDGVSAAVVAEMASYLETMNITLQQLVKVYKYGHYHISKTS  
 YFLCYEPTIKSIFERLRNFDSPEYKFCGTFAILHVRDITTYDSSQPNNKSVLPVSKNSQMITFTFQ  
 NGCVATLRTSGTEPKIKYYAEMCASPDQSDTALLEEELKKLIDALIENFLQPSKNGLIWRSV

**TRTRPLE** – GFP Tag – V

**Restriction Sites:**

SgfI-MluI

**Cloning Scheme:**


**ACCN:** NM\_173582

**ORF Size:** 1866 bp

**OTI Disclaimer:** The molecular sequence of this clone aligns with the gene accession number as a point of reference only. However, individual transcript sequences of the same gene can differ through naturally occurring variations (e.g. polymorphisms), each with its own valid existence. This clone is substantially in agreement with the reference, but a complete review of all prevailing variants is recommended prior to use. [More info](#)

**OTI Annotation:** This clone was engineered to express the complete ORF with an expression tag. Expression varies depending on the nature of the gene.

**Components:** The ORF clone is ion-exchange column purified and shipped in a 2D barcoded Matrix tube containing 10ug of transfection-ready, dried plasmid DNA (reconstitute with 100 ul of water).

**Reconstitution Method:**

1. Centrifuge at 5,000xg for 5min.
2. Carefully open the tube and add 100ul of sterile water to dissolve the DNA.
3. Close the tube and incubate for 10 minutes at room temperature.
4. Briefly vortex the tube and then do a quick spin (less than 5000xg) to concentrate the liquid at the bottom.
5. Store the suspended plasmid at -20°C. The DNA is stable for at least one year from date of shipping when stored at -20°C.

**RefSeq:** [NM\\_173582.3](#), [NP\\_775853.2](#)

**RefSeq Size:** 8519 bp

**RefSeq ORF:** 1869 bp

**Locus ID:** 283209

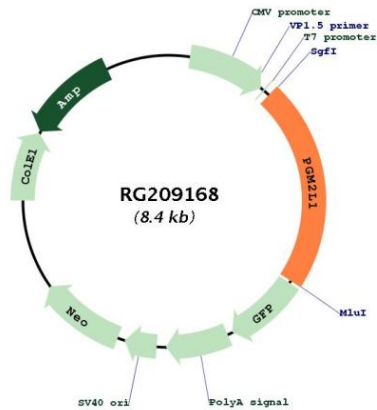
**UniProt ID:** [Q6PCE3](#)

**Cytogenetics:** 11q13.4

**Protein Pathways:** Starch and sucrose metabolism

**Gene Summary:** Glucose 1,6-bisphosphate synthase using 1,3-bisphosphoglycerate as a phosphate donor and a series of 1-phosphate sugars as acceptors, including glucose 1-phosphate, mannose 1-phosphate, ribose 1-phosphate and deoxyribose 1-phosphate. 5 or 6-phosphosugars are bad substrates, with the exception of glucose 6-phosphate. Also synthesizes ribose 1,5-bisphosphate. Has only low phosphopentomutase and phosphoglucomutase activities. [UniProtKB/Swiss-Prot Function]

**Product images:**



Circular map for RG209168