

Product datasheet for **RG209167**

CNKSR3 (NM_173515) Human Tagged ORF Clone

Product data:

Product Type:	Expression Plasmids
Product Name:	CNKSR3 (NM_173515) Human Tagged ORF Clone
Tag:	TurboGFP
Symbol:	CNKSR3
Synonyms:	CNK3; CNK3/IPCEF1; MAGI1
Mammalian Cell Selection:	Neomycin
Vector:	pCMV6-AC-GFP (PS100010)
E. coli Selection:	Ampicillin (100 ug/mL)



[View online »](#)

ORF Nucleotide Sequence:

>RG209167 representing NM_173515
 Red=Cloning site Blue=ORF Green=Tags(s)

TTTTGTAATACGACTCACTATAGGGCGGCCGGAATTCGTCGACTGGATCCGGTACCGAGGAGATCTGCC
 GCC**CGCATCGCC**

ATGGAACCCGTGACCAAGTGGAGCCCCAACAAAGTGGTGGACTGGACTAGAGGGTTGGATGACTGCCTGC
 AACAAATATGTCCACAAGTTTGAACGAGAGAAGATCAACGGCGAGCAGCTGCTGCAGATTTCCCATCAGGA
 CCTGGAGGAGCTGGGGTACACGGATCGACACCCAGGAGCTTGTGTTGGAGGCTGTGGACCTTCTCTGT
 GCACTGAATTATGGCCTCGAAACTGATAACATGAAGAAGTGGTCTGAAACTGAGAGCATCTTCCACACA
 ATTTACAGAATTACATAAGTAGCCGACGGAAAAGTCCCGCTTACGATGGCAACACCTCCCGCAAGGCCCC
 CAATGAGTTCCTGACCTCGGTGGTGGAGCTCATCGGCGCCGCCAAGGCCCTGCTGGCGTGGCTGGACCGG
 GCTCCGTTTACAGGGATCACTGATTTCTCAGTCACGAAGAACAAAATTATCCAGCTTTGCTTGGACCTGA
 CCACTACAGTCCAGAAGGATTGCTTTGTAGCGGAAATGGAGGATAAAGTTTTAACTGTGGTCAAGGTTTT
 AAATGGCATCTGTGACAAAACAATCCGATCTACCACAGATCCTGTGATGAGCCAGTGTGCATGTCTGGAG
 GAAGTTCACTTACCAAACATTAACCTGGGGAAGGCTGGGCATGTACATCAAATCAACCTATGATGGGT
 TACACGTGATTACTGGAACCACAGAAAATTCTCCTGCAGACAGATCTCAGAAGATTTCATGCTGGTACGA
 AGTCATTCAAGTTAATCAGCAAAGTGTGGTGGGATGGCAGCTGAAAAATCTGGTGAAGAAATGAGAGAG
 AATCCCACCGAGTTGTGTTACTGCTTAAGAAGCGCCCCACCGGGTCTTCAACTTTACTCCTGCTCCCC
 TGAAAAACCTACGGTGAAGCCACCTCTGTACAGACCTCACCTCCACCCGCGACAACCCAGTCCCTGA
 AAGCACTATGGATACCTCACTGAAGAAGGAGAAGTCAAGCATCCTGGATCTTTATATTCTCCTCCGCT
 GCTGTTCCCTACTCTCCCGGGATGAGAATGGCAGTTTTGTTTATGGAGGGTCCAGTAAGTGAACAAC
 CATTGCTGGTCTAAGGGTTCAGAGTCCCCGAATTCCTTCTTGGACCAGGAAAGCCGAGACGAAGATT
 CACCATTGCAGACTCGGATCAGTTGCCTGGTACTCGGTGGAAACCAACATTCTGCCACAAAAATGAGA
 GAGAAAACACCATCTTATGGCAAGCCACGGCTTTGTCCATGCCTGCTGATGGAACTGGATGGGGATTG
 TGGACCCTTTTGCAGACCTCGAGGTCATGGCAGGAAAGGGGAGGATGCCCTTTGCCGGTATTTTCAGTAA
 CGAGCGGATTCTCCGATCATTGAAGAGAGCTCCTCTCCCCATACCGGTTCTCCAGACCCACGACCGAG
 CGGCATCTGGTCCGGGTGCGGACTACATCCGAGGAAGCAGGTGCTACATCAACTCAGATCTCCACAGCA
 GCGCCACGATTCCATTCCAGGAGGAAGGGACAAAAAGAAATCTGGCTCCTCAGTACGAAGTCTCGTC
 CACAGAACCGTCCCTCCTGGTCACTGGTTTACGCGCCTCAAAGTGTGACTCAC

ACGCGTACGCGGCCGCTCGAG - GFP Tag - GTTTAA

Protein Sequence:

>RG209167 representing NM_173515
 Red=Cloning site Green=Tags(s)

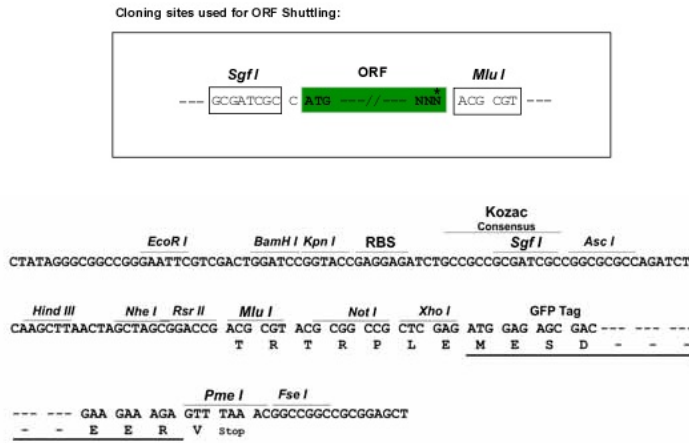
MEPVTKWSPKQVVDWTRGLDDCLQYVHKFEREKINGEQLLQISHQDLEELGVTRIGHQELVLEAVDLLC
 ALNYGLETDNMKNLVLKLRASSHNLQNYISSRRKSPAYDGNTRKAPNEFLT SVVELIGAAKALLAWLDR
 APFTGITDFSVTKNKIIQLCLDLTTTVQKDCFVAEMEDKVLTVVKVLNGICDKTIRSTTDPVMSQACLE
 EVHLPNIKPGELGMYIKSTYDGLHVITGTTENSPADRSQKIHAGDEVIQVNNQTVVWQLKNLVKLLRE
 NPTGVVLLKKRPTGSFNFTAPLKNLRWKPLVQTSPPPATTQSPESTMDTSLKKEKSAILDLYIPPPP
 AVPYSPRDENG SFVYGGSSKCKQPLPGPKGSESPNSFLDQESRRRRFTIADSDQLPGYSVETNILPTKMR
 EKTPSYGKPRPLSMPADGNWGMIVDPFARPRGHGRKGEDALCRYFSNERIPPIIESSSPYRFSRPTTE
 RHLVRGADYIRGSRCYINSDLHSSATIPFQEETKKKSGSSATKSSSTEPSSLVSWFTRLKLLTH

TRTRPLE - GFP Tag - V

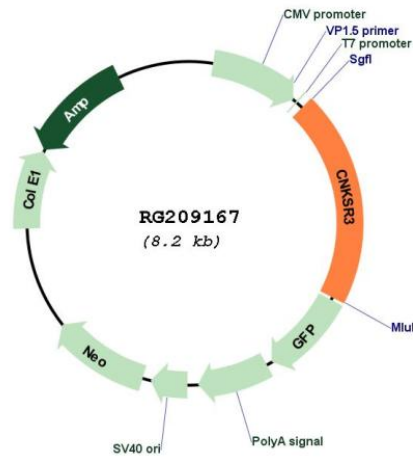
Restriction Sites:

Sgfl-Mlul

Cloning Scheme:



Plasmid Map:



ACCN:	NM_173515
ORF Size:	1665 bp
OTI Disclaimer:	The molecular sequence of this clone aligns with the gene accession number as a point of reference only. However, individual transcript sequences of the same gene can differ through naturally occurring variations (e.g. polymorphisms), each with its own valid existence. This clone is substantially in agreement with the reference, but a complete review of all prevailing variants is recommended prior to use. More info
OTI Annotation:	This clone was engineered to express the complete ORF with an expression tag. Expression varies depending on the nature of the gene.
Components:	The ORF clone is ion-exchange column purified and shipped in a 2D barcoded Matrix tube containing 10ug of transfection-ready, dried plasmid DNA (reconstitute with 100 ul of water).
Reconstitution Method:	<ol style="list-style-type: none">1. Centrifuge at 5,000xg for 5min.2. Carefully open the tube and add 100ul of sterile water to dissolve the DNA.3. Close the tube and incubate for 10 minutes at room temperature.4. Briefly vortex the tube and then do a quick spin (less than 5000xg) to concentrate the liquid at the bottom.5. Store the suspended plasmid at -20°C. The DNA is stable for at least one year from date of shipping when stored at -20°C.
RefSeq:	NM_173515.2 , NP_775786.2
RefSeq Size:	3277 bp
RefSeq ORF:	1668 bp
Locus ID:	154043
UniProt ID:	Q6P9H4
Cytogenetics:	6q25.2
Protein Families:	Druggable Genome
Gene Summary:	Involved in transepithelial sodium transport. Regulates aldosterone-induced and epithelial sodium channel (ENaC)-mediated sodium transport through regulation of ENaC cell surface expression. Acts as a scaffold protein coordinating the assembly of an ENaC-regulatory complex (ERC).[UniProtKB/Swiss-Prot Function]