

Product datasheet for **RG209156**

ARMCX5 (NM_022838) Human Tagged ORF Clone

Product data:

| | |
|---------------------------|---|
| Product Type: | Expression Plasmids |
| Product Name: | ARMCX5 (NM_022838) Human Tagged ORF Clone |
| Tag: | TurboGFP |
| Symbol: | ARMCX5 |
| Synonyms: | GASP5 |
| Mammalian Cell Selection: | Neomycin |
| Vector: | pCMV6-AC-GFP (PS100010) |
| E. coli Selection: | Ampicillin (100 ug/mL) |



[View online »](#)

ORF Nucleotide Sequence:

>RG209156 representing NM_022838
 Red=Cloning site Blue=ORF Green=Tags(s)

TTTTGTAATACGACTCACTATAGGGCGGCCGGGAATTCGTCGACTGGATCCGGTACCGAGGAGATCTGCC
 GCC**GCGATCGCC**

ATGGTTGACTCTGGGACAGAAGCAAGGGCTAGAGGAAAGGCTGAGGCTGGCCTGCAAGATGGAATCAGTG
 GCCTGCCACTGTAGAGTGAATGGTAAAACCCAGGCCGAGGCAGTGGCTGAGGCAGAAGCTGAAAACAGA
 ATCAGTGACCCAGGCCAAAGCTGGTGATGGAGCAATGACCAGGACACATACAGTGACCTACAGGGAGGCT
 ATGGCTGTGACAAGGGAAGTGATCAAGGTGGAAGATACAATAAGACTAGAGTCATGGTTGAGACTAAGA
 CAAAACCCCTGGCAGAACGCAGTATAGTGCCACAAACCAAGTCAAAGGCCATGCCATGTCTAGGGTCAG
 TACTGTAACCAAGTCTGAAGTCAAGGTTGTTGCTGTCATTGAGGCAAATATTAGTCTATGCCAAGTCA
 CATGATAAGGCCAATACTGGGTCCAGACCTGACAGAAGGGAAGAGACCAGCATTGGGATGAAATCCAGTG
 ATGAGGATGAAGAAAATATATGCTCCTGGTTCTGGACTGGAGAAGAGCCTAGTGTAGGGTCTGGTTCTG
 GCCTGAAGAAGAGACCTCTCTTCAAGTTTATAAGCCCCTACCTAAGATCCAGGAAAAGCCCAAGCCACA
 CACAAACCCACACTTACTATAAAACAAAAGGTAATAGCATGGTCAAGGGCCAGGTATATTGCTCCTAGTTC
 CAGTTGAAGGAGGGGAGCAATCCTTGCCTCCAGAAGGAAACTGGACCCTGGTTGAGACCTTGATTGAAAC
 TCCTCTGGGGATTGACCTTTGACCAAGATCCCACCTTATCATGGGCCTTATTACCAGACCTTAGCTGAG
 ATCAAAAAACAGATTAGGCAAAGGGAAAAGTATGGGCCTAATCCGAAGGCCTGCCACTGCAATCACGTG
 GCTTTAGTTTAGAGCCTAAAGAGTTTGATAAACTTGTGGCCCTCCTTAAGTTAACTAAGGATCCTTTTCA
 TCGAATAAGCTACAATGATAATGGGCATCAGTCTGCTTATCCATTTACTCAAGATATAATTCATGAT
 GTAGGTATTACTGTTATGATTGAAAACCTGGTCAATAATCCCAATGTTAAAGAACCCTGGAGCTTTAA
 GTATGGTGGATGACAGCTCTGAGTCTCCGAAGAACCAAAATCAGGGGAGTCATATATACATCAAGTTTG
 TAAAGGCATAATCTCTTGCCCTTGAACCTCCCTGTGCAGCTGGCTGGACTGAAATTAAGGGCACTTG
 AGTATAAAATTTGAAGATCACTATGTGATTACCAGTTATATTCCAGATTTCTCACCTTGTTAAACAAGG
 GAAGTGTCAAACCAAGTTTTATGTTTTAAAAGTGTTCGTGTTTGTCTAAAAATCACGCCAATACAAG
 AGAATTGATCAGTGCCAAAGTACTGTCATCATTGGTTGCACCCTTAAACAAGAATGAGTCAAAGGCCAAT
 ATTCTTAATATTATTGAAATATTTGAGAATATAAATTTTCAGTTCAAACAAAGGCAAAGCTATTTACCA
 AGGAAAAGTTCACTAAATCTGAGCTTATTTCAATATTCCAGGAAGCAAACAGTTTGGTCAGAAACTCCA
 AGACTTAGCAGAGCACAGTGATCCCGAAGTGAGAGATAAAGTCATACGATTAATACTAAAACCTC

ACGCGTACGCGGCCGCTCGAG – GFP Tag – GTTTAA

Protein Sequence:

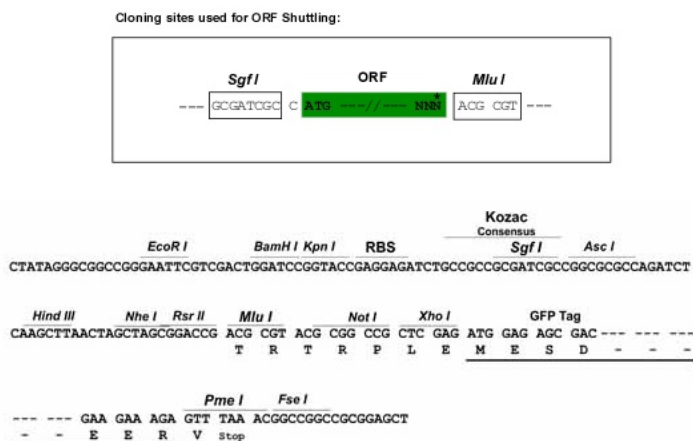
>RG209156 representing NM_022838
 Red=Cloning site Green=Tags(s)

MVDSGTEARARGKAEAGLQDGISGPATARVNGKTQAEAVAEAEELKTESVTQAKAGDGAMTRTHTVTYREA
 MAVTREVIVKVEDTTKTRVMVETKTKPLAERSIVPQTKSKAMPMSRVSTVTKSEVKVVAVIEANIRSYAKS
 HDKANTGSRPDRREETSIGMKSSDEDEENICSWFWTGEEPSVGSWFWPEEETSLQVYKPLPKIQEKPKPT
 HKPTLTIKQKVIAWSRARIYVLVPEVGEQSLPPEGNWTLVETL IETPLGIRPLTKIPPYHGPYYQTLAE
 IKKQIRQREKYGNPKACHCKSRGFSLEPKFDKLVALLKLTDPFIHEIATMIMGISPAYPFTQDI IHD
 VGITVMIENLVNPNVKEHPGALSMVDDSESSEEPKSGESYIHQVCKGIISCPNLSVPQLAGLKLGLHL
 SIKFEDHYVITSYIPDFLTLNKGSVKTKFYVLKVFVSLSKNHANTRELISAKVLSLVAPFNKNESKAN
 ILNIIEIFENINFQFKTKAKLFTKEKFTKSELISIFQEAKQFGQKLQDLAEHSDPEVRDKVIRLILKL

TRTRPLE – GFP Tag – V

Restriction Sites:

Sgfl-MluI

Cloning Scheme:


ACCN: NM_022838

ORF Size: 1674 bp

OTI Disclaimer: The molecular sequence of this clone aligns with the gene accession number as a point of reference only. However, individual transcript sequences of the same gene can differ through naturally occurring variations (e.g. polymorphisms), each with its own valid existence. This clone is substantially in agreement with the reference, but a complete review of all prevailing variants is recommended prior to use. [More info](#)

OTI Annotation: This clone was engineered to express the complete ORF with an expression tag. Expression varies depending on the nature of the gene.

Components: The ORF clone is ion-exchange column purified and shipped in a 2D barcoded Matrix tube containing 10ug of transfection-ready, dried plasmid DNA (reconstitute with 100 ul of water).

Reconstitution Method:

1. Centrifuge at 5,000xg for 5min.
2. Carefully open the tube and add 100ul of sterile water to dissolve the DNA.
3. Close the tube and incubate for 10 minutes at room temperature.
4. Briefly vortex the tube and then do a quick spin (less than 5000xg) to concentrate the liquid at the bottom.
5. Store the suspended plasmid at -20°C. The DNA is stable for at least one year from date of shipping when stored at -20°C.

RefSeq: [NM_022838.4](#)

RefSeq Size: 3004 bp

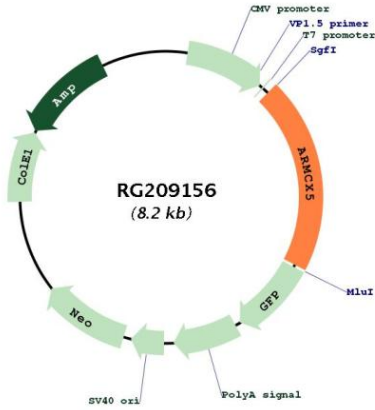
RefSeq ORF: 1677 bp

Locus ID: 64860

UniProt ID: [Q6P1M9](#)

Cytogenetics: Xq22.1
 Domains: DUF634

Product images:



Circular map for RG209156