

Product datasheet for **RG209127**

FOXL2 (NM_023067) Human Tagged ORF Clone

Product data:

Product Type:	Expression Plasmids
Product Name:	FOXL2 (NM_023067) Human Tagged ORF Clone
Tag:	TurboGFP
Symbol:	FOXL2
Synonyms:	BPES; BPES1; PFRK; PINTO; POF3
Mammalian Cell Selection:	Neomycin
Vector:	pCMV6-AC-GFP (PS100010)
E. coli Selection:	Ampicillin (100 ug/mL)
ORF Nucleotide Sequence:	>RG209127 representing NM_023067 Red=Cloning site Blue=ORF Green=Tags(s)

TTTTGTAATACGACTCACTATAGGGCGGCCGGAATTCGTCGACTGGATCCGGTACCGAGGAGATCTGCCGCCGCGATCGCC

ATGATGGCCAGCTACCCGAGCCCGAGGACGCGGGGGGCCCTGCTGGCCCCAGAGACCGGTGCGACAG
TCAAGGAGCCAGAAGGGCCGCCCGAGCCAGGCAAGGGCGGTGGGGTGGCGGGGACAGCCCCGGA
GAAGCCGACCCGGCGCAGAAGCCCCGTACTCGTACGTGGCGCTCATCGCCATGGCGATCCGCGAGAGC
GCGGAGAAGAGGCTCACGCTGTCCGGCATCTACCAGTACATCATCGGAAGTTCCCGTTCTACGAGAAGA
ATAAGAAGGGCTGGCAAATAGCATCCGCCACAACCTCAGCCTCAACGAGTGCTTCATCAAGGTGCCGCG
CGAGGGCGGGCGGAGCGCAAGGGCAACTACTGGACGCTGGACCCGGCCTGCGAAGACATGTTTCGAGAAG
GGCAACTACCGGCGCGCCCGCCGATGAAGAGGCCCTTCCGGCCCGCCCGCGCACTTCCAGCCCGGCA
AGGGGCTCTTCGGGGCCGGAGGGCGCCGAGGCGGGTGC GGCGTGGCGGGCGCCGGGGCCGACGGCTACGG
CTACCTGGCGCCCCCAAGTACCTGCAGTCTGGCTTCCTCAACAACCTCGTGGCCGCTACCGCAGCCTCCC
TCACCCATGCCCTATGCCTCCTGCCAGATGGCGGACGCCGAGCGGCTGCAGCAGCTGCGGCTGCAGCCG
CGGGCCCCGTAGCCCTGGCGCGCCGCTGTGGTCAAGGGGCTGGCGGGCCCGCCGCTCGTACGGGCC
GTACACACGCGTGCAGAGCATGGCGTGCCTCCCGGCGTAGTGAACCTCGTACAATGGCCTGGGAGGCCCG
CAGGCGCCGCTGCCCCACCGCACCGGGGCCGCGCGCCGCGGGCCAGCTCAGCCCTGCCAGCCC
AGCCACCGCCGCCCGCCCGCGCCCGCCGCGCCACAGTGCGCCGGGCTGCAGTTCGCTTGTGCCCGCAG
CCCGAGCTCGCCATGATGCATTGCTCTTACTGGGACCACGACAGCAAGACCGGCGCGCTGCATTCCGGCC
TCGATCTCAGCGG[AT]CCG

AGCGGACCGACGCGTACGCGGCCGCTCGAG - GFP Tag - GTTTAA



Protein Sequence: >RG209127 representing NM_023067
Red=Cloning site Green=Tags(s)

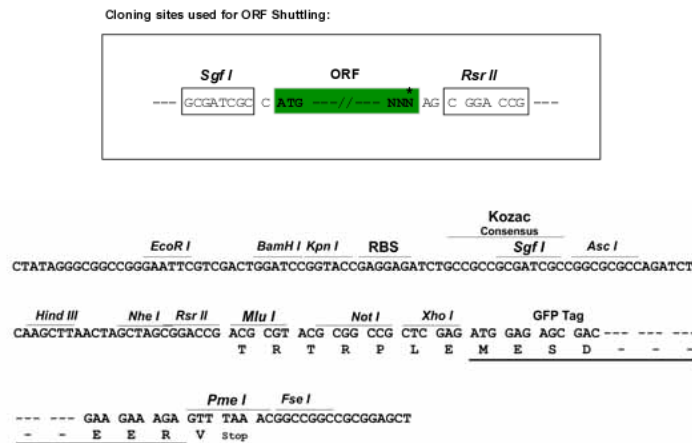
MMASYPEPEDAAGALLAPETGRTVKEPEGPPSPGKGGGGGGTAPEKPDPAQKPPYSYVALIAMAIRES
 AEKRLTSLGIYQYIIAKFPFYEKNNKKGWQNSIRHNLNLNECFIKVPREGGGERKGNWTLDPACEDMFEK
 GNYRRRRMRKRPFRPPP AHFQPGKGLFGAGGAAGCGVAGAGADGYGLAPPKYLQSGFLNNSWPLPQP
 SPMPYASCQMAAAAAAAAAAAAAAGPGSGAAA VVKLAGPAASYGPYTRVQSMALPPGVVNSYNGLG
 PAAPPPPHPHPHAHHLHAAAAPPPAPPHGAAAPPGQLSPASPATAAPPAPAPTSAPGLQFACARQ
 PELAMMHCSYWDHDSKTGALHSRLDLSXXP

SGPTRRRLE - GFP Tag - V

Chromatograms: https://cdn.origene.com/chromatograms/ja2201_b06.zip

Restriction Sites: SgfI-RsrII

Cloning Scheme:



ACCN: NM_023067

ORF Size: 1140 bp

OTI Disclaimer: Due to the inherent nature of this plasmid, standard methods to replicate additional amounts of DNA in E. coli are highly likely to result in mutations and/or rearrangements. Therefore, OriGene does not guarantee the capability to replicate this plasmid DNA. Additional amounts of DNA can be purchased from OriGene with batch-specific, full-sequence verification at a reduced cost. Please contact our customer care team at custsupport@origene.com or by calling 301.340.3188 option 3 for pricing and delivery.

The molecular sequence of this clone aligns with the gene accession number as a point of reference only. However, individual transcript sequences of the same gene can differ through naturally occurring variations (e.g. polymorphisms), each with its own valid existence. This clone is substantially in agreement with the reference, but a complete review of all prevailing variants is recommended prior to use. [More info](#)

OTI Annotation: This clone was engineered to express the complete ORF with an expression tag. Expression varies depending on the nature of the gene.

Components: The ORF clone is ion-exchange column purified and shipped in a 2D barcoded Matrix tube containing 10ug of transfection-ready, dried plasmid DNA (reconstitute with 100 ul of water).

Reconstitution Method:

1. Centrifuge at 5,000xg for 5min.
2. Carefully open the tube and add 100ul of sterile water to dissolve the DNA.
3. Close the tube and incubate for 10 minutes at room temperature.
4. Briefly vortex the tube and then do a quick spin (less than 5000xg) to concentrate the liquid at the bottom.
5. Store the suspended plasmid at -20°C. The DNA is stable for at least one year from date of shipping when stored at -20°C.

RefSeq: [NM_023067.2](#), [NP_075555.1](#)

RefSeq Size: 2744 bp

RefSeq ORF: 1131 bp

Locus ID: 668

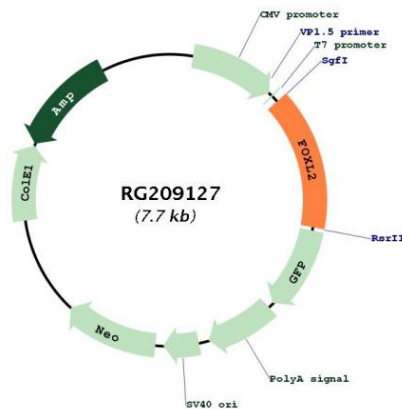
UniProt ID: [P58012](#)

Cytogenetics: 3q22.3

Protein Families: Druggable Genome, Transcription Factors

Gene Summary: This gene encodes a forkhead transcription factor. The protein contains a fork-head DNA-binding domain and may play a role in ovarian development and function. Expansion of a polyalanine repeat region and other mutations in this gene are a cause of blepharophimosis syndrome and premature ovarian failure 3. [provided by RefSeq, Jul 2016]

Product images:



Circular map for RG209127