

Product datasheet for **RG209120**

PLC delta 3 (PLCD3) (NM_133373) Human Tagged ORF Clone

Product data:

Product Type:	Expression Plasmids
Product Name:	PLC delta 3 (PLCD3) (NM_133373) Human Tagged ORF Clone
Tag:	TurboGFP
Symbol:	PLCD3
Synonyms:	PLC-delta-3
Mammalian Cell Selection:	Neomycin
Vector:	pCMV6-AC-GFP (PS100010)
E. coli Selection:	Ampicillin (100 ug/mL)



[View online »](#)

ORF Nucleotide
Sequence:

>RG209120 representing NM_133373
Red=Cloning site Blue=ORF Green=Tags(s)

TTTTGTAATACGACTCACTATAGGGCGGCCGGGAATTCGTCGACTGGATCCGGTACCGAGGAGATCTGCC
GCCGCGATCGCC

ATGCTGTGCGGCCGCTGGAGGCGTTGCCGCCGCCCGCCGAGGAGCCCCGGTGGCCGCCAGGTGCGCAG
CCCAAGTCGCGGGCGCGGTGCTCTCCCGTCCCGGCCACTCCCTCCGATGGCGGCACCAAGAGGCCCGG
GCTGCGGGCGCTGAAGAAGATGGGCTGACGGAGGACGAGGACGTGCGGCCATGCTGCGGGCTCCCGG
CTCCGCAAGATCCGCTCGCGCACGTGGCACAAGGAGCGGCTGTACCGGCTGCAGGAGGACGGCTGAGCG
TGTGGTTCCAGCGGCGCATCCCGCTGCGCCATCGCAGCACATCTTCTCGTGCAGCACATCGAGGCGGT
CCGCGAGGGCCACCAGTCCGAGGGCTGCGGGCTTCGGGGTGCCTTCGCGCCAGCGCGCTGCCTCACC
ATCGCTTCAAGGGCCCGCAAGAACCTGGACCTGGCGGCGCCACGGCTGAGGAAGCGCAGCGCTGGG
TGCGGGTCTGACCAAGCTCCGCGCGCGCTGGACGCCATGAGCCAGCGGAGCGGCTAGACCCTGGAT
CCACTCTATCTGCACCGGGCTGACTCCAACCAGGACAGCAAGATGAGCTTCAAGGAGATCAAGAGCCTG
CTGAGAATGGTCAACGTGGACATGAACGACATGTACGCCTACCTCCTTCAAGGAGTGTGACCCTCCA
ACAACGACCGTCTAGAGGGGGCTGAGATCGAGGAGTTCCTGCGGGCGCTGCTGAAGCGGCCGGAGCTGGA
GGAGATCTTCCATCAGTACTCGGGCGAGGACCGGTGCTGAGTGCCCTGAGCTGCTGGAGTTCTGGAG
GACCAGGGCGAGGAGGGCGCCACTGGCCCGCGCCAGCAGCTCATTGAGCCTATGAGCTCAACGAGA
CAGCCAAGCAGCATGAGCTGATGACACTGGATGGCTTCATGATGTACCTGTTGTCGCCGGAGGGGCTGC
CTTGACAACACCCACACGTGTGTGTTCCAGGACATGAACCAGCCCTTGCCACTACTTCATCTCTTCC
TCCCACAACACCTATCTGACTGACTCCCAGATCGGGGGGCCAGCAGCACCAGGGCCTATGTTAGGGCT
TTGCCAGGGATGCCGCTGCGTGGAGCTGGACTGCTGGAGGGGCCAGGAGGGGAGCCGTCATCTCA
TGGCCATACCCTCACCTCCAAGATTCTTCCGGGACGTGGTCCAAGCCGTGCGCGACCATGCCTTCACG
CTGTCCCCTTACCCTGTATCCTATCCCTGGAGAACCCTGCGGGCTGGAGCAGCAGGCTGCCATGGCCC
GCCACCTCTGCACCATCCTGGGGACATGCTGGTACACAGGCGCTGGACTCCCCAAATCCCGAGGAGCT
GCCATCCCAGAGCAGCTGAAGGGCCGGTCTGGTGAAGGAAAGAAGCTGCCCGCTGCTCGGAGCGAG
GATGGCCGGGCTCTGTGGATCGGGAGGAGGAGGAGGATGACGAGGAGGAAGAAGAGGAGGTGGAGG
CTGCAGCGCAGAGGGGCTGGCCAAGCAGATCTCCCGGAGCTGTCGGCCCTGGCTGTGTACTGCCACGC
CACCCGCTGCGGACCCTGCACCCTGCCCAACGCCCCACAACCCTGCCAGTCACTCCCTCAGCGAG
CGCAAAGCCAAGAACTCATTGGGAGGCAGGAAACAGCTTTGTCAGGCACAATGCCCGCCAGCTGACCC
GGTGTACCCGCTGGGGCTGCGGATGAACCTCAGCCAACACAGTCCCCAGGAGATGTGAACTCGGGCTG
TCAGCTGGTGGCCTTGAACCTCCAGACGCCAGGCTACGAGATGGACCTCAATGCCGGGCGCTTCTAGTC
AATGGGACGTGTGGCTACGTCTAAAACCTGCCTGCCTGCGGCAACCTGACTCGACCTTTGACCCGAGT
ACCCAGGACCTCCAGAACCCTCTCAGCATCCAGGTGCTGACTGCACAGCAGCTGCCAAAGCTGAATGC
CGAGAAGCCACTCCATTGTGGACCCCTGGTGCATTTAGATCCATGGGGTGCCTGCAGACTGTGCC
CGGCAGGAGACTGACTACGTGCTCAACAATGGCTTCAACCCCGCTGGGGGAGACCCCTGCAGTTCCAGC
TGCGGGCTCCGGAGCTGGCACTGGTCCGGTTTGTGGTGAAGATTATGACGCCACCTCCCCAATGACTT
TGTGGCCAGTTTACTGCTCTTAGCAGCCTAAAGCAAGGTTACCGCCACATACACCTGCTTTCCAAG
GACGGGGCTCACTGTACCAGCCAGCTCTTCATCCAATCCGATCCAGCGCTCC

ACGCGTACGCGGCCGCTCGAG – GFP Tag – GTTTAA

Protein Sequence: >RG209120 representing NM_133373
 Red=Cloning site Green=Tags(s)

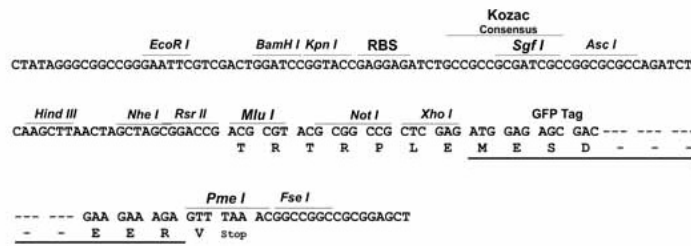
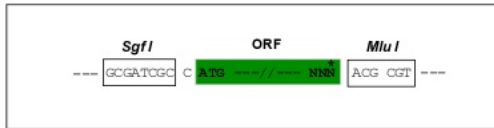
MLCGRWRRCRPPEEPPVAAQVAAQVAAPVALPSPTSDGGTKRPLRALKKMGLEDEDVRAMLRGSRLRKIRSRTWKRLRYRLQEDGLSVWFQRRIPRAPSQHIFVQVHIEAVREGHQSEGLRRFGGAFAPARCLTIAFKGRRKNLDLAAPTAEEAQRWVRGLTKLRARLDAMSQRERLDHWIHSYLHRADSNQDSKMSFKEIKSLRMVNVDNMNDMYAYLLFKECDHSNDRLEGAIEEFLLRLLKRPELEEIFHQYSGEDRVLSAPELLEFLEDQGEEGATLARAQQLIQTYELNETAKQHELMTLDFGMMYLLSPEGAALDNTHTCVFQDMNQPLAHYFISSSHNTYL TDSQIGGPSSTEAYVRAFAQGCRVCLDCWEGPGGEPVIYHGHTLTSKILFRDVVQAVRDHAFTLSPYPVILSLENHCGLEQQAAMARHLCTILGDMLVTQALDSPNPEELPSPEQLKGRVLVKGKKLPAARSE DGRALSDREEEEEDEEEEEVEAAAQRRLAKQISPELSALAVYCHATRLRTHLPAPNAPQPCQVSSLSE RKAKKLIREAGNSFVRHNARQLTRVYPLGLRMNSANYSPEMWNSSGCQLVALNFQTPGYEMDLNAGRFLV NGQCGYVLKPACLRQPDSTFDPEYPPRRTLSIQVLTAAQLPKLNAEKPHSIVDPLVRIEIHGVPADCA RQETDYVLNNGFNPRWGQTLQFQLRAPELALVRFVVEDYDATSPNDFVGFQFTLPLSSLKQGYRHIHLLSK DGASLSPATLFIQIRIQR

TRTRPLE - GFP Tag - V

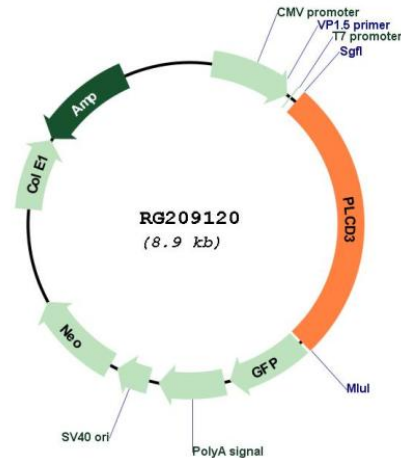
Restriction Sites: SgfI-MluI

Cloning Scheme:

Cloning sites used for ORF Shuttling:



Plasmid Map:



ACCN: NM_133373

ORF Size: 2367 bp

OTI Disclaimer: Due to the inherent nature of this plasmid, standard methods to replicate additional amounts of DNA in *E. coli* are highly likely to result in mutations and/or rearrangements. Therefore, OriGene does not guarantee the capability to replicate this plasmid DNA. Additional amounts of DNA can be purchased from OriGene with batch-specific, full-sequence verification at a reduced cost. Please contact our customer care team at custsupport@origene.com or by calling 301.340.3188 option 3 for pricing and delivery.

The molecular sequence of this clone aligns with the gene accession number as a point of reference only. However, individual transcript sequences of the same gene can differ through naturally occurring variations (e.g. polymorphisms), each with its own valid existence. This clone is substantially in agreement with the reference, but a complete review of all prevailing variants is recommended prior to use. [More info](#)

OTI Annotation: This clone was engineered to express the complete ORF with an expression tag. Expression varies depending on the nature of the gene.

Components: The ORF clone is ion-exchange column purified and shipped in a 2D barcoded Matrix tube containing 10ug of transfection-ready, dried plasmid DNA (reconstitute with 100 ul of water).

Reconstitution Method:

1. Centrifuge at 5,000xg for 5min.
2. Carefully open the tube and add 100ul of sterile water to dissolve the DNA.
3. Close the tube and incubate for 10 minutes at room temperature.
4. Briefly vortex the tube and then do a quick spin (less than 5000xg) to concentrate the liquid at the bottom.
5. Store the suspended plasmid at -20°C. The DNA is stable for at least one year from date of shipping when stored at -20°C.

RefSeq:	NM_133373.2 , NP_588614.1
RefSeq Size:	3477 bp
RefSeq ORF:	2370 bp
Locus ID:	113026
UniProt ID:	Q8N3E9
Cytogenetics:	17q21.31
Domains:	C2, PI-PLC-X, PI-PLC-Y, PH
Protein Families:	Druggable Genome
Protein Pathways:	Calcium signaling pathway, Inositol phosphate metabolism, Metabolic pathways, Phosphatidylinositol signaling system
Gene Summary:	<p>This gene encodes a member of the phospholipase C family, which catalyze the hydrolysis of phosphatidylinositol 4,5-bisphosphate to generate the second messengers diacylglycerol and inositol 1,4,5-trisphosphate (IP3). Diacylglycerol and IP3 mediate a variety of cellular responses to extracellular stimuli by inducing protein kinase C and increasing cytosolic Ca(2+) concentrations. This enzyme localizes to the plasma membrane and requires calcium for activation. Its activity is inhibited by spermine, sphingosine, and several phospholipids. [provided by RefSeq, Jul 2008]</p>