

Product datasheet for **RG209083**

C8orf82 (NM_001001795) Human Tagged ORF Clone

Product data:

Product Type: Expression Plasmids
Product Name: C8orf82 (NM_001001795) Human Tagged ORF Clone
Tag: TurboGFP
Symbol: C8orf82
Mammalian Cell Selection: Neomycin
Vector: pCMV6-AC-GFP (PS100010)
E. coli Selection: Ampicillin (100 ug/mL)
ORF Nucleotide Sequence: >RG209083 representing NM_001001795
 Red=Cloning site Blue=ORF Green=Tags(s)

TTTTGTAATACGACTCACTATAGGGCGGCCGGGAATTCGTCGACTGGATCCGGTACCGAGGAGATCTGCC
 GCC**CGATCGCC**

ATGTGGCCGCTTGC GGGACGCTCCGGACCCTGGCCTTGGCGGGTGC GGGGAGCCCGGGCCTGCAGCG
 GGGATGGGGCGTTTCTACACGCAGGGCCAGAGTCCGGAGCCGCGGACCCGCGAGTATTTCTACTACGT
 GGACCACAGGGCCAGCTTTTCTGGATGATTCAAAAAAGAATTTTCATCACCTGCTTCAAAGACCCG
 CAGTTCCTGGTCACCTTCTTCTCCGCCCTGAGACCCAACCGCAGCGGGCGCTACGAGGCCGCTTTCCCT
 TCCTCTCGCCCTGC GGCAGAGAGCGCACTTCTGCGCTGCGAGGACCGCCGGTGGTCTTACGCACCT
 GCTGACCGCGGACACGGGCCTCCGCGCCTCTCCTACTGCGGCGGTGGCGAGGCCCTGGCCGTGCCCTT
 GAGCCGGCGCGCCTGCTGCCCTGGCCGCCAACGGGCGCCTGTACCACCGGCGCCGAGCGTGC GGGCG
 GCGTGGGCTGGTGC GCTCCGCCCTGGCCTTCGAGCTCAGCGCCTGCTTCGAGTACGGGCCCGGCGCGCC
 TGCGCTGCCCTCGCACGTGCGCTGGCAGGGCCCGCCGCTCGCCCTACCATGGACCTGGCCCCGCTGCTG
 CTCGCGGCTCGGTCGCC

ACGCGTACGCGGCCGCTCGAG - GFP Tag - GTTTAA

Protein Sequence: >RG209083 representing NM_001001795
 Red=Cloning site Green=Tags(s)

MWPPCGTLRTLALARSRGARACSGDGGVSYTQQQSPEPRTREYFYVDHQQLFLDDSKMKNFITCFKDP
 QFLVTFFSRLRPNRSGRYEAAFPFLSPCGRERNFLRCEDRPVVFTHLLTADHGPPRLSYCGGGEALAVPF
 EPARLLPLAANGRLYHPAPERAGGVGLVRSALAFELSACFEYGPAPALP SHVRWQGRRLALTMDLAPLL
 LAARSP

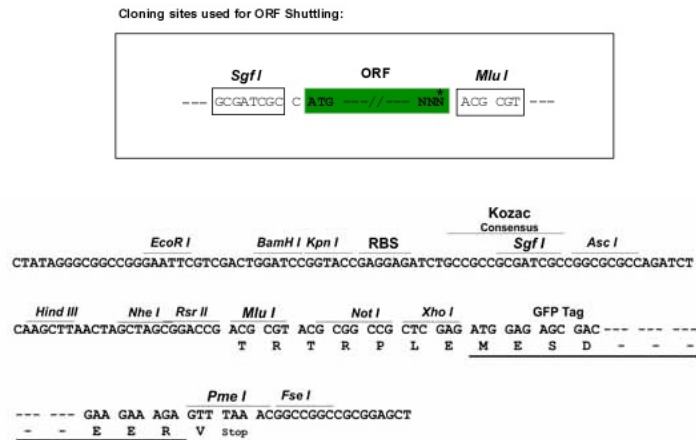
TRTRPLE - GFP Tag - V



[View online »](#)

Restriction Sites: SgfI-MluI

Cloning Scheme:



ACCN: NM_001001795

ORF Size: 648 bp

OTI Disclaimer: Due to the inherent nature of this plasmid, standard methods to replicate additional amounts of DNA in E. coli are highly likely to result in mutations and/or rearrangements. Therefore, OriGene does not guarantee the capability to replicate this plasmid DNA. Additional amounts of DNA can be purchased from OriGene with batch-specific, full-sequence verification at a reduced cost. Please contact our customer care team at custsupport@origene.com or by calling 301.340.3188 option 3 for pricing and delivery.

The molecular sequence of this clone aligns with the gene accession number as a point of reference only. However, individual transcript sequences of the same gene can differ through naturally occurring variations (e.g. polymorphisms), each with its own valid existence. This clone is substantially in agreement with the reference, but a complete review of all prevailing variants is recommended prior to use. [More info](#)

OTI Annotation: This clone was engineered to express the complete ORF with an expression tag. Expression varies depending on the nature of the gene.

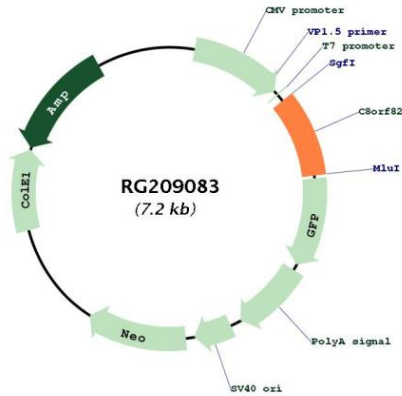
Components: The ORF clone is ion-exchange column purified and shipped in a 2D barcoded Matrix tube containing 10ug of transfection-ready, dried plasmid DNA (reconstitute with 100 ul of water).

Reconstitution Method:

1. Centrifuge at 5,000xg for 5min.
2. Carefully open the tube and add 100ul of sterile water to dissolve the DNA.
3. Close the tube and incubate for 10 minutes at room temperature.
4. Briefly vortex the tube and then do a quick spin (less than 5000xg) to concentrate the liquid at the bottom.
5. Store the suspended plasmid at -20°C. The DNA is stable for at least one year from date of shipping when stored at -20°C.

RefSeq: [NM_001001795.2](#)
 RefSeq Size: 1979 bp
 RefSeq ORF: 651 bp
 Locus ID: 414919
 UniProt ID: [Q6P1X6](#)
 Cytogenetics: 8q24.3

Product images:



Circular map for RG209083