

Product datasheet for **RG209073**

RED1 (ADARB1) (NM_001112) Human Tagged ORF Clone

Product data:

Product Type:	Expression Plasmids
Product Name:	RED1 (ADARB1) (NM_001112) Human Tagged ORF Clone
Tag:	TurboGFP
Symbol:	ADARB1
Synonyms:	ADAR2; DRABA2; DRADA2; NEDHYMS; RED1
Vector:	pCMV6-AC-GFP (PS100010)
E. coli Selection:	Ampicillin (100 ug/mL)
Cell Selection:	Neomycin



[View online »](#)

ORF Nucleotide
Sequence:

>RG209073 representing NM_001112
Red=Cloning site Blue=ORF Green=Tags(s)

TTTTGTAATACGACTCACTATAGGGCGGCCGGAATTCGTCGACTGGATCCGGTACCGAGGAGATCTGCC
GCC**CGGATCGCC**

ATGGATATAGAAGATGAAGAAAACATGAGTTCAGCAGCACTGATGTGAAGGAAAACCGCAATCTGGACA
ACGTGTCCCCAAGGATGGCAGCACACCTGGGCCCTGGCGAGGGCTCTCAGCTCTCCAATGGGGTGGTGG
TGGCCCCGGCAGAAAGCGGCCCTTGAGAGGGGCAAGTGGCCACTCCAAGTACCGCTGAAGAAAAGG
AGGAAAACACCAGGGCCCGTCTCCCAAGAACGCCCTGATGCAGCTGAATGAGATCAAGCCTGGTTTGC
AGTACACACTCTGTCCCAGACTGGGCCGTGCACGCGCCTTTGTTTGTATGTCTGTGGAGGTGAATGG
CCAGGTTTTTGGGGCTCTGGTCCACAAAAGAAAAGGCAAACTCCATGCTGCTGAGAAGGCCCTTGAGG
TCTTTCGTTTCAGTTTCTAATGCCTCTGAGGCCACCTGGCCATGGGAGGACCCTGTCTGTCAACACGG
ACTTCACATCTGACCAGGCCGACTTCCCTGACACGCTCTTCAATGGTTTTGAAACTCCTGACAAGCGGA
GCCTCCCTTTTACGTGGGCTCCAATGGGGATGACTCCTTTCAGTCCAGCGGGGACCTCAGCTTGTCTGT
TCCCCGGTGCCTGCCAGCCTAGCCAGCCTCCTCTCCCTGCCTTACCACCATTCCACCCCGGAGTGGGA
AGAATCCCGTGATGATCTTGAACGAAGTGCGCCAGGACTCAAGTATGACTTCTCTCCGAGAGCGGGGA
GAGCCATGCCAAGAGCTTCGTATGTCTGTGGTGGTGGTGGTGGTGGTGGTGGTGGTGGTGGTGGTGG
AAGAAGCTTGCCAAGGCCGGGCTGCGCAGTCTGCCCTGGCCGCATTTTTAACTTGCACTTGGATCAGA
CGCCATCTCGCCAGCCTATTCAGTGAAGGCTTTCAGCTGCATTTACCGCAGGTTTTAGCTGACGCTGT
CTCAGCCTGGTCTGGGTAAGTTTGGTACCTGACCGACAATCTCTCCCTCACGCTCGCAGAAAA
GTGCTGGCTGGAGTCGTATGACAACAGGCACAGATGTTAAAGATGCCAAGGTGATAAGTGTCTACAG
GAACAAAATGTATTAATGGTGAATACATGATGATCGTGGCCTTGCAATTAATGACTGCCATGCAGAAAT
AATATCTCGGAGATCCTTGCTCAGATTTCTTTATACACAACCTGAGCTTTACTTAAATAACAAGATGAT
CAAAAAAGATCCATCTTTCAGAAATCAGAGCGAGGGGGTTTAGGCTGAAGGAGAATGTCCAGTTTCATC
TGTACATCAGCACCTCTCCCTGTGGAGATGCCAGAATCTTCTCACCACATGAGCCAATCCTGGAAGAACC
AGCAGATAGACACCCAAATCGTAAAGCAAGAGGACAGCTACGGACCAAAATAGAGTCTGGTGAAGGGACG
ATTCCAGTGCCTCCAATGCGAGCATCAAACGTGGGACGGGGTGTGCAAGGGGAGCGGCTGCTCACCA
TGTCTGCAGTGACAAGATTGCACGCTGGAACGTGGTGGGATCCAGGGATCCCTGCTCAGCATTTCGT
GGAGCCATTTACTTCTCGAGCATCATCTGGGACGCTTTACCACGGGGACCACCTTCCAGGGCCATG
TACCAGCGGATCTCCAACATAGAGGACCTGCCACCTCTACACCCTCAACAAGCCTTTGCTCAGTGGCA
TCAGCAATGCAGAAGCAGGCAGCCAGGGAAGGCCCCCAACTTCAAGTGTCAACTGGACGGTAGGCGACTC
CGCTATTGAGGTCAACGCCACGACTGGGAAGGATGAGCTGGGCCGCGCTCCCGCTGTGTAAGCAC
CGGTTGTACTGTCTGGATGCGTGTGCACGGCAAGGTTCCCTCCCACTTACTACGCTCCAAGATTACCA
AACCCAACGTGTACCATGAGTCCAAGCTGGCGGCAAGGAGTACCAGGCCCAAGGCGCGTCTGTTTAC
AGCCTTCATCAAGGCGGGGCTGGGGCCTGGGTGGAGAAGCCACCGAGCAGGACCAGTTCTCACTCAGC
CCC

AG**CGGACCG**ACGCGTACGCGGCCGCTCGAG - GFP Tag - GTTTAA

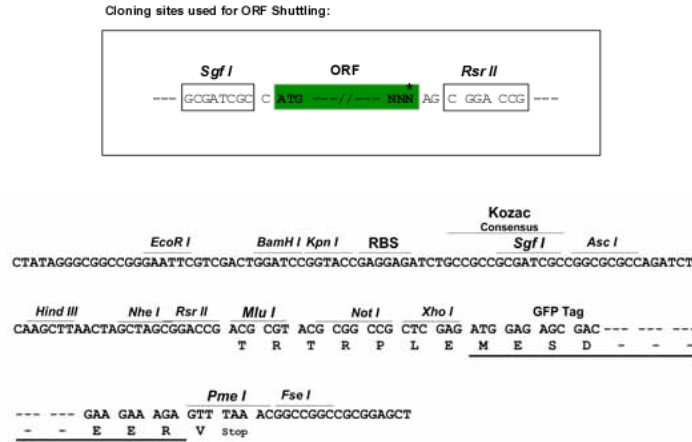
Protein Sequence: >RG209073 representing NM_001112
 Red=Cloning site Green=Tags(s)

MDIEDEENMSSSSTDVKENRNLDNVSPKDGSTPGPEGSQLSNGGGGGPGRKRPLEEGSNHGSKYRLKKR
 RKTPGPVLPKNALMQLNEIKPGLQYTLLSQTGPVHAPLFVMSVEVNGQVFEGSGPTKKKAKLHAAEKALR
 SFVQFPNASEAHLAMGRTL SVNTDFTSDQADFPDTL FNGFETPDKAEPFVYVGSNGDDSFSSSGDLSLSA
 SPVPASLAQPPLPALPPFPSPGKNPVMILNELRPGLKYDFLSESGESHAKSFVMSVVVDGQFEGSGRN
 KKLAKARAAQSALAAIFNLHLDQTPSRQPIPSEGLQLHLPQVLADAVSRLVLGKFGDLTDNFSSPHARRK
 VLAGVVMTTGTDVDAKVISVSTGKTCINGEYMSDRGLALNDCHAEIISRRSLLRFLYTQLELYLNKDD
 QKRSIFQKSERGGFRLKENVQFHLYISTSPCGDARIFSPHEPILEPADRHPRKARGQLRTKIESGEGT
 IPVRSNASIQTDGVLQGERLLTMSCSDKIARWNVVGIQGSLLSIFVEPIYFSSIIILGSLYHGDHL SRAM
 YQRISNIEDLPPLYTLNKPLLSGISNAEARQPGKAPNFSVNWTVGDSAIEVINATTGKDELGRASRLCKH
 ALYCRWMRVHGKVP SHLLRSKITKPNVYHESKLAKEYQAAKARLFTAFIKAGLGAWVEKPTEQDFSLT
 P

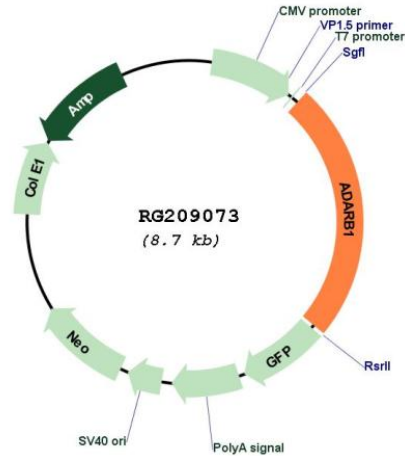
SGP^{TRRRLE} - GFP Tag - V

Restriction Sites: SgfI-RsrII

Cloning Scheme:



Plasmid Map:



ACCN: NM_001112

ORF Size: 2103 bp

OTI Disclaimer: Due to the inherent nature of this plasmid, standard methods to replicate additional amounts of DNA in *E. coli* are highly likely to result in mutations and/or rearrangements. Therefore, OriGene does not guarantee the capability to replicate this plasmid DNA. Additional amounts of DNA can be purchased from OriGene with batch-specific, full-sequence verification at a reduced cost. Please contact our customer care team at custsupport@origene.com or by calling 301.340.3188 option 3 for pricing and delivery.

The molecular sequence of this clone aligns with the gene accession number as a point of reference only. However, individual transcript sequences of the same gene can differ through naturally occurring variations (e.g. polymorphisms), each with its own valid existence. This clone is substantially in agreement with the reference, but a complete review of all prevailing variants is recommended prior to use. [More info](#)

OTI Annotation: This clone was engineered to express the complete ORF with an expression tag. Expression varies depending on the nature of the gene.

Components: The ORF clone is ion-exchange column purified and shipped in a 2D barcoded Matrix tube containing 10ug of transfection-ready, dried plasmid DNA (reconstitute with 100 ul of water).

Reconstitution Method:

1. Centrifuge at 5,000xg for 5min.
2. Carefully open the tube and add 100ul of sterile water to dissolve the DNA.
3. Close the tube and incubate for 10 minutes at room temperature.
4. Briefly vortex the tube and then do a quick spin (less than 5000xg) to concentrate the liquid at the bottom.
5. Store the suspended plasmid at -20°C. The DNA is stable for at least one year from date of shipping when stored at -20°C.

RefSeq: [NM_001112.2](#), [NP_001103.1](#)

RefSeq Size: 6881 bp

RefSeq ORF: 2106 bp

Locus ID: 104

UniProt ID: [P78563](#)

Cytogenetics: 21q22.3

Protein Families: Druggable Genome

Gene Summary: This gene encodes the enzyme responsible for pre-mRNA editing of the glutamate receptor subunit B by site-specific deamination of adenosines. Studies in rat found that this enzyme acted on its own pre-mRNA molecules to convert an AA dinucleotide to an AI dinucleotide which resulted in a new splice site. Alternative splicing of this gene results in several transcript variants, some of which have been characterized by the presence or absence of an ALU cassette insert and a short or long C-terminal region. [provided by RefSeq, Jul 2008]