

Product datasheet for **RG209058**

AFG3L2 (NM_006796) Human Tagged ORF Clone

Product data:

Product Type:	Expression Plasmids
Product Name:	AFG3L2 (NM_006796) Human Tagged ORF Clone
Tag:	TurboGFP
Symbol:	AFG3L2
Synonyms:	OPA12; SCA28; SPAX5
Mammalian Cell Selection:	Neomycin
Vector:	pCMV6-AC-GFP (PS100010)
E. coli Selection:	Ampicillin (100 ug/mL)



[View online »](#)

**ORF Nucleotide
Sequence:**

>RG209058 representing NM_006796
 Red=Cloning site Blue=ORF Green=Tags(s)

TTTTGTAATACGACTCACTATAGGGCGGCCGGGAATTCGTCGACTGGATCCGGTACCGAGGAGATCTGCC
 GCC**CGCATCGCC**

ATGGCGCACCCGCTGTTTTCGGCTGTGGGGCCGGGCGGCTGCTGGCCCCGCGCCTACAGCAGCTCCTCG
 TGCTTGCGGCGTGGGCCGGGCGAGCAGCCCTGCCTCCGGACGCTTTACCGATTTGTTACAACCAAGC
 AAGGGCCAGCAGAAATCTCTTTTGACAGATATAATTGCTGCTTATCAAAGATTCTGTTCTCGACCCCA
 AAAGGATTTGAAAAACTTTCTAATGGAAAAATGGAAAAAGCTAGTGAACCTAAAGAAGTTATGG
 GAGAGAAAAAGAATCAAAGCCAGCTGCTACCACAGCTCTTCTGGAGGAGGAGTGGTGGCGGTGGAAA
 ACGAGGTGGCAAGAAAGATGATTCTCACTGGTGGTCCAGGTTTCAAGGGTGACATTCCATGGGACGAC
 AAGGATTTAGGATGTTCTTCTGACTGCTGTTCTGGGTGGAGTCAATTTACTTCTGCTCA
 AGATCCGGGAGAGAAATCACTTGAAGGACTTTGTCAATAACTATCTTTCAAAGGAGTAGTAGACAG
 ATTGGAAGTCGTAACAAGCGTTTTGTTGAGTGACCTTTACACCAGGAAAACTCTGTTGATGGCAA
 TACGTTTGGTTTAAATATTGGCAGTGTGGACACCTTTGAACGGAATCTGGAACTTACAGCAGGAATTGG
 GCATAGAAGGAGAAAAATCGGGTGCCTGTTGCTACATTGCTGAAAGTGATGGCTCTTTTCTGCTGAGCAT
 GCTGCCTACGGTCTCATCATCGCTTCTTCTACACCATCAGAAGAGGGCCTGCTGGCATTGGCCGG
 ACAGGCCGAGGGATGGCGGACTCTCAGTGTGCGAGAAACCCTGCCAAGGCTTAAAGGATGAAATTG
 ATGTGAAGTTCAAAGATGTGGCTGGCTGTGAGGAGGCCAAGCTAGAGATCATGGAATTTGTGAATTTCTT
 GAAAAACCAAAGCAGTATCAAGACCTAGGAGCAAAAATCCAAAGGGTCCATTCTCACTGGTCTCCA
 GGCCTGGGAAGCAGCTGCTAGCTAAGGCCACAGCCGAGAAGCCAATGTCCCTTCATCACCGTTAGTG
 GATCTGAGTTTTGGAGATGTTCTGTTGGTGGGCCCTGTAGAGTCCGAGACTTATTTGCCCTTGCTCG
 GAAGAATGCCCTTGATCCTCTTCATCGATGAAATCGATGCGGTGGGAAGGAAGAGAGGAAGAGGCAAC
 TTTGGAGGCGAGAGTGAGCAGGAGAACAACAACAACCAGCTGCTGGTGGAGATGGATGGTTTTAATACAA
 CAACAAATGTCGTCATTTTGGCCGGCACCAATCGACCAGATATCCTGGACCCCGCCTACTTAGGCCGGG
 GCGTTTTCGACAGGAGATCTTTATTGGACCACCAGACATAAAAGGAAGAGCTTCTATTTTCAAAGTTCAT
 CTCCGACCGCTAAACTGGACAGTACCCTGGAGAAGGATAAATTGGCAAGAAAACGGCATCTTTAACTC
 CAGGGTTTTAGGTGCTGATGTTGCTAATGTCTGTAATGAAGTGCCTGATTGCTGCAAGGCATCTGTC
 AGATCCATAAAATCAGAAACACTTTGAACAGGCAATTGAGCGAGTGATTGGTGGCTTAGAGAAGAAAACG
 CAGGTTCTGCAGCCTGAGGAGAAGAAGACTGTGGCATAACCACGAAGCAGGCCATGCGGTTGCCGGCTGGT
 ATCTGGAGCACGACACCGCTTTTAAAGGTATCCATCATCCACGTGGCAAAGGACTAGGTTATGCTCA
 GTATTTACAAAAAGAAACAATACCTCTATACCAAAGAGCAGCTCTTGGATAGGATGTGATGACTTTAGGT
 GGTGAGTCTCTGAAGAAATCTTCTTTGGAAGAATTACAACCTGGTCTCAAGATGACTTGAGAAAAGTAA
 CTCAGAGTGATATGCCCAAATTGTTGAGTTGGCATGAATGAAAAGGTTGGGCAATCTCCTTTGACCT
 CCCACGTCAGGGGGACATGGTATTGGAGAAACCTTACAGTGAAGCCACTGCAAGATTGATAGATGATGAA
 GTACGAATACTTATTAATGATGCTTATAAAAGAACAGTAGCTCTTCTCACAGAAAAGAAAGCTGACGTGG
 AGAAGTTGCTCTTCTGTTGTTAGAAAAAGAAGTATTAGATAAGAATGATATGTTGAACTTTTGGGCC
 CAGACCATTTGCGGAAAAATCTACCTATGAAGAATTTGTGGAAGGCACTGGCAGCTTGGATGAGGACACC
 TCACTTCCAGAAGGCCTTAAGGACTGGAACAAGGAGCGGAAAAGGAGAAAGAGGAGCCCGGGTGAGA
 AAGTTGCCAAC

ACGCGTACGCGGCCGCTCGAG - GFP Tag - GTTTAA

Protein Sequence: >RG209058 representing NM_006796
Red=Cloning site Green=Tags(s)

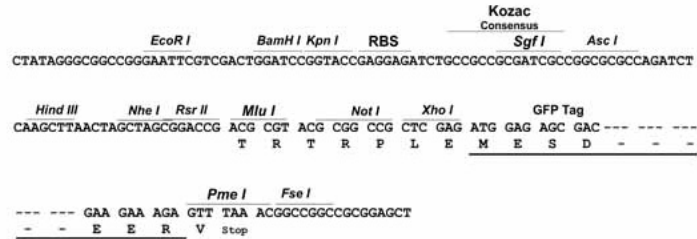
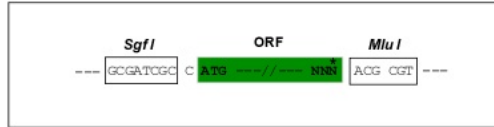
MAHRCLRLWGRGGCWPRGLQQLLVPGGVGPGEQPCLRTLRYRFVTTQARASRNSLLTDIIAAYQRFCSRPP
KGFKEYFPNGKNGKKASEPKEVMGEKKESKPAATTRSSGGGGGGGKRGKKDDSHWWSRFQKGDIPWDD
KDFRMFFLWTALFWGGVMFYLLLRSGREITWKDFVNNYL SKGVVDRLEV VNKRFVRVTFTPGKTPVDGQ
YVWFNIGSVDTFERNLETLQQELGIEGENRVPVVYIAESDGSFLLSMLPTVLIIFLLYTIIRRGPAIGR
TGRMGGLF SVGETTAKVLKDEIDVKFKDVAGCEEAKLEIMFVNFLKNPKQYQDLGAKIPKGAILTGPP
GTGKTL LAKATAGEANVPFITVSGSEFLEMFGVGP ARVRDLFALARKNAPCILFIDEIDAVGRKRGRGN
FGGQSEQENTLNQLLVEMDGFNTTNNVILAGTNRPDILDPALLRPGRFDRQIFIGPPDIKGRASIFKVH
LRPLKLDSTLEKDKLARKLASLTPGFSGADVANCNEAALIAARHLSDSINQKHFEQAIERVIGGLEKKT
QVLQPEEKKT VAYHEAGHAVAGWYLEHADPLLKVSIIIPRGKGLGYAQLPKEQYLTYKEQLLDRMCMTLG
GRVSEEIFFGRIITGAQDDL RKVTQSAYAQIVQFGMNEKVGQISFDLPRQGMVLEKPYSEATARLIDDE
VRILINDAYKRTVALLTEKKADVEKVALLLLLEKEVLDKNDMVELL GPRPFAEKSTYEEFVEGTGSLDEDT
SLPEGLKDWNKEREKEKEEPPGEKVAN

TRTRPLE - GFP Tag - V

Restriction Sites: Sgfl-Mlul

Cloning Scheme:

Cloning sites used for ORF Shutting:



- ACCN:** NM_006796
- ORF Size:** 2391 bp
- OTI Disclaimer:** The molecular sequence of this clone aligns with the gene accession number as a point of reference only. However, individual transcript sequences of the same gene can differ through naturally occurring variations (e.g. polymorphisms), each with its own valid existence. This clone is substantially in agreement with the reference, but a complete review of all prevailing variants is recommended prior to use. [More info](#)
- OTI Annotation:** This clone was engineered to express the complete ORF with an expression tag. Expression varies depending on the nature of the gene.
- Components:** The ORF clone is ion-exchange column purified and shipped in a 2D barcoded Matrix tube containing 10ug of transfection-ready, dried plasmid DNA (reconstitute with 100 ul of water).

Reconstitution Method:

1. Centrifuge at 5,000xg for 5min.
2. Carefully open the tube and add 100ul of sterile water to dissolve the DNA.
3. Close the tube and incubate for 10 minutes at room temperature.
4. Briefly vortex the tube and then do a quick spin (less than 5000xg) to concentrate the liquid at the bottom.
5. Store the suspended plasmid at -20°C. The DNA is stable for at least one year from date of shipping when stored at -20°C.

RefSeq: [NM_006796.1](#), [NP_006787.1](#)

RefSeq Size: 2963 bp

RefSeq ORF: 2394 bp

Locus ID: 10939

UniProt ID: [Q9Y4W6](#)

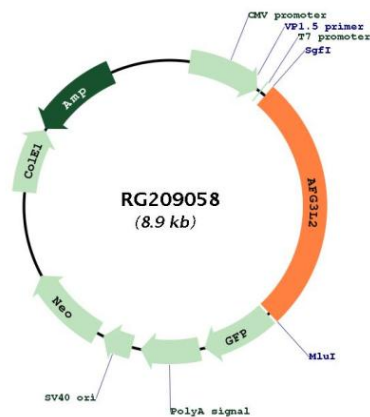
Cytogenetics: 18p11.21

Domains: Peptidase_M41, AAA, AAA

Protein Families: Druggable Genome, Protease, Transmembrane

Gene Summary: This gene encodes a protein localized in mitochondria and closely related to paraplegin. The paraplegin gene is responsible for an autosomal recessive form of hereditary spastic paraplegia. This gene is a candidate gene for other hereditary spastic paraplegias or neurodegenerative disorders. [provided by RefSeq, Jul 2008]

Product images:



Circular map for RG209058