

Product datasheet for **RG209055**

LIS1 (PAFAH1B1) (NM_000430) Human Tagged ORF Clone

Product data:

Product Type: Expression Plasmids
Product Name: LIS1 (PAFAH1B1) (NM_000430) Human Tagged ORF Clone
Tag: TurboGFP
Symbol: LIS1
Synonyms: LIS1; LIS2; MDCR; MDS; NudF; PAFAH
Mammalian Cell Selection: Neomycin
Vector: pCMV6-AC-GFP (PS100010)
E. coli Selection: Ampicillin (100 ug/mL)
ORF Nucleotide Sequence: >RG209055 representing NM_000430
 Red=Cloning site Blue=ORF Green=Tags(s)

TTTTGTAATACGACTCACTATAGGGCGGCCGGAATTCGTCGACTGGATCCGGTACCGAGGAGATCTGCC
 GCC**CGATCGCC**

ATGGTGTGTCCAGAGACAACGAGATGAACTAAATCGAGCTATAGCAGATTATCTTCGTTCAAATGGCT
 ATGAAGAGGCATATTCAGTTTTTAAAAAGGAAGCTGAATTAGATGTGAATGAAGAATTAGATAAAAAAGTA
 TGCTGGTCTTTGGAAAAAATGGACATCTGTTATTAGATTACAAAAGAAGTTATGGAATTAGAATCA
 AAGCTAAATGAAGCAAAGAAGAATTTACGTCAGGTGGACCTCTGGTCAGAAACGAGACCCAAAAGAAT
 GGATCCCGTCCGCCAGAAAAATATGCATTGAGTGGTCACAGGAGTCCAGTCACTCGAGTCATTTTCCA
 TCCTGTGTTCAAGTGTATGGTCTCTGCTTCAGAGGATGCTACAATTAAGGTGTGGGATTATGAGACTGGA
 GATTTTGAACGAACCTCTAAAGGACATACAGACTCTGTACAGGACATTTCAATCGACCACAGCGGAAGC
 TTCTGGCTTCTGTTCTGCAGATATGACCATAAACTATGGGATTTTCAGGGCTTTGAATGCATCAGAAC
 CATGCACGGCCATGACCACAATGTTTCTCAGTAGCCATCATGCCCAATGGAGATCATATAGTGTCTGCC
 TCAAGGGATAAACTATAAAATGTGGGAAGTGCAAACTGGTACTGTGTGAAGACATTCACAGGACACA
 GAGAATGGGTACGTATGGTACGGCCAAATCAAGATGGCACTCTGATAGCCAGCTGTTCCAATGACCAGAC
 TGTGCGTGTATGGTTCGTAGCAACAAAGGAATGCAAGGCTGAGCTCCGAGAGCATGAGCATGTGGTAGAA
 TGCATTTCTGGCTCCAGAAAGCTCATATTCTCCATCTCTGAAGCAACAGGACTCTGAGACTAAAAAAA
 GTGGTAAACCTGGCCATTCTTGCTGTCTGGATCCAGAGACAAGACTATTAAGATGTGGGATGTCAGTAC
 TGGCATGTGCCTTATGACCCTCGTGGGTATGATAAAGTGGTACGTGGAGTTCTGTTCCATTCTGGGGG
 AAGTTTATTTGAGTTGTGCTGATGACAAGACCCTACGCGTATGGGATTACAAGAACAAGCGATGCATGA
 AGACCCTCAATGCGCATGAACACTTTGTTACCTCCTTGGATTTCCACAAGACGGCACCCCTATGTCGTCAC
 TGGCAGCGTAGATCAAACAGTAAAAGTGTGGGAGTGCCGT

AGCGGACCGACGCGTACGCGGCCGCTCGAG - GFP Tag - GTTTAA



[View online »](#)

Protein Sequence: >RG209055 representing NM_000430
 Red=Cloning site Green=Tags(s)

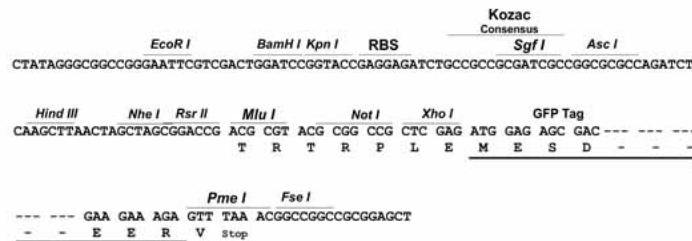
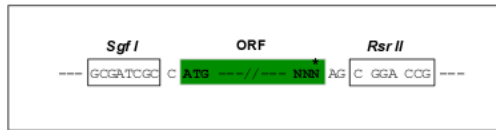
MVLSQRQRDELNRAIADYLRNSNGYEEAYSVFKKEAELDVNEELDKKYAGLLEKKWTSVIRLQKKVMELES
 KLNEAKEEFTSGGPLGQKRDPKIEWIPRPPEKYALSGHRSPVTRVIFHPVFSVMVSASEDATIKVWDYETG
 DFERTLKGHTDSVQDISFDHSGKLLASCADMTIKLWDFQGFECIRTMHGHDHNVSVAIMPNGDHIVSA
 SRDKTIKMWEVQTGYCVKTFTHGREWVRMVRPNQDGLIASCSNDQTVRVWVVATKECKAELREHEHVVE
 CISWAPESSYSSISEATGSETKKSGKPGPFLLSGSRDKTIKMWDVSTGMCLMTLVGHDNWVRGVLFHSGG
 KFILSCADDKTLRWVDYKNKRCMKTLNAHEHFVTSDFHKTAPYVVTGSVDQTVKWECCR

SGPTRRRLE - GFP Tag - V

Restriction Sites: SgfI-RsrII

Cloning Scheme:

Cloning sites used for ORF Shuttling:



ACCN: NM_000430

ORF Size: 1230 bp

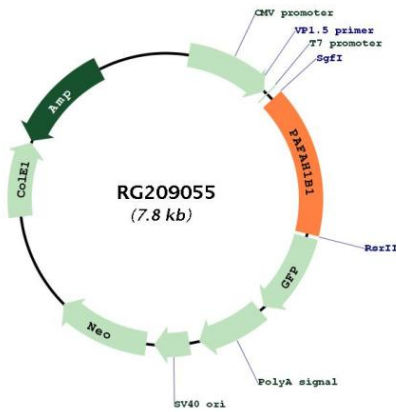
OTI Disclaimer: Due to the inherent nature of this plasmid, standard methods to replicate additional amounts of DNA in E. coli are highly likely to result in mutations and/or rearrangements. Therefore, OriGene does not guarantee the capability to replicate this plasmid DNA. Additional amounts of DNA can be purchased from OriGene with batch-specific, full-sequence verification at a reduced cost. Please contact our customer care team at custsupport@origene.com or by calling 301.340.3188 option 3 for pricing and delivery.

The molecular sequence of this clone aligns with the gene accession number as a point of reference only. However, individual transcript sequences of the same gene can differ through naturally occurring variations (e.g. polymorphisms), each with its own valid existence. This clone is substantially in agreement with the reference, but a complete review of all prevailing variants is recommended prior to use. [More info](#)

OTI Annotation: This clone was engineered to express the complete ORF with an expression tag. Expression varies depending on the nature of the gene.

Components:	The ORF clone is ion-exchange column purified and shipped in a 2D barcoded Matrix tube containing 10ug of transfection-ready, dried plasmid DNA (reconstitute with 100 ul of water).
Reconstitution Method:	<ol style="list-style-type: none">1. Centrifuge at 5,000xg for 5min.2. Carefully open the tube and add 100ul of sterile water to dissolve the DNA.3. Close the tube and incubate for 10 minutes at room temperature.4. Briefly vortex the tube and then do a quick spin (less than 5000xg) to concentrate the liquid at the bottom.5. Store the suspended plasmid at -20°C. The DNA is stable for at least one year from date of shipping when stored at -20°C.
RefSeq:	<u>NM_000430.4</u>
RefSeq Size:	5581 bp
RefSeq ORF:	1233 bp
Locus ID:	5048
UniProt ID:	<u>P43034</u>
Cytogenetics:	17p13.3
Domains:	WD40, LisH
Protein Pathways:	Ether lipid metabolism, Metabolic pathways
Gene Summary:	This locus was identified as encoding a gene that when mutated or lost caused the lissencephaly associated with Miller-Dieker lissencephaly syndrome. This gene encodes the non-catalytic alpha subunit of the intracellular Ib isoform of platelet-activating factor acetylhydrolase, a heterotrimeric enzyme that specifically catalyzes the removal of the acetyl group at the SN-2 position of platelet-activating factor (identified as 1-O-alkyl-2-acetyl-sn-glycerol-3-phosphorylcholine). Two other isoforms of intracellular platelet-activating factor acetylhydrolase exist: one composed of multiple subunits, the other, a single subunit. In addition, a single-subunit isoform of this enzyme is found in serum. [provided by RefSeq, Apr 2009]

Product images:



Circular map for RG209055