

Product datasheet for **RG209051**

SCYL2 (NM_017988) Human Tagged ORF Clone

Product data:

Product Type:	Expression Plasmids
Product Name:	SCYL2 (NM_017988) Human Tagged ORF Clone
Tag:	TurboGFP
Symbol:	SCYL2
Synonyms:	AMC4; AMCNACC; CVAK104
Mammalian Cell Selection:	Neomycin
Vector:	pCMV6-AC-GFP (PS100010)
E. coli Selection:	Ampicillin (100 ug/mL)



[View online »](#)

ORF Nucleotide Sequence:

>RG209051 representing NM_017988
 Red=Cloning site Blue=ORF Green=Tags(s)

TTTTGTAATACGACTCACTATAGGGCGGCCGGAATTCGTGACTGGATCCGGTACCGAGGAGATCTGCC
 GCC**CGGATCGCC**

ATGGAGTCCATGCTTAATAAATTGAAGAGTACTGTTACAAAAGTAACAGCTGATGCTACTAGTGCTGTAA
 TGGGAAATCCTGTCACTAGAGAATTTGATGTTGGTCGACACATTGCCAGTGGTGGCAATGGGCTAGCTTG
 GAAGATTTTTAATGGCACAAAAAGTCAACAAAGCAGGAAGTGGCAGTTTTTGTCTTTGATAAAAAACTG
 ATTGACAAGTATCAAAAATTTGAAAAGGATCAAAATCATTGATTCTCTAAAACGAGGAGTCCAACAGTTAA
 CTCGGCTTCGACACCCTCGACTTCTACTGTCCAGCATCCTTTAGAAGAATCCAGGGATTGCTTGGCATT
 TTGTACAGAACCAAGTTTTGCCAGTTTAGCCAATGTTCTTGGTAACTGGGAAAATCTACCTTCCCCTATA
 TCTCCAGACATTAAGGATTATAAACTTTATGATGTAGAAACCAATATGGTTTGCTTCAAGTTTCTGAAG
 GATTGTCATTCTGCATAGCAGTGTGAAAATGGTGCATGGAAATCACTCCTGAAAATATAATTTTGAA
 TAAAAGTGGAGCCTGAAAATAATGGGTTTTGATTTTTGTGTATCATCAACCAATCCTTCTGAACAAGAG
 CCTAAATTTCTTGTAAAGAATGGGACCCAAATTTACCTTCATTGTGCTTCCAATCCTGAATATTTGG
 CTCTGAATACATACTTTCTGTGAGCTGTGAAACAGCCAGTGATATGTATTCTTTAGGAACTGTTATGTA
 TGCTGTATTTAATAAAGGGAAACCTATATTTGAAGTCAACAAGCAAGATATTTACAAGAGTTTCAGTAGG
 CAGTTGGATCAGTTGAGTCGTTTAGGATCTAGTTCACCTTACAAATATACCTGAGGAAGTTCGTGAACATG
 TAAAGCTACTGTTAAATGTAACCTCCGACTGTAAAGACCAGATGCAGATCAAATGACAAAGATTCCCTTCTT
 TGATGATGTTGGTGCAGTAACTGCAATATTTGATACCTTATCCAAAGAGATAATCTTCAGAAATCA
 CAGTTTTTCAAAGGACTGCCAAAGTTCTACAAAACCTGCCAAAGCGTGCATTGTGCAGAGAATTTTGC
 CTTGTTGACTTCAGAATTTGTAACCCCTGACATGGTACCTTTTTGTTTTGCCCAATGTTCTACTTATTG
 TGAGGAATGCACCAAGAAGAATATGTCAAATTAATTCCTCCTGAACTTGGCCCTGTGTTTAAGCAGCAG
 GAGCCAATCCAGATTTTGTAAATTTTCTACAAAAATGGATTTGCTACTAACCAAAACCCCTCCTGATG
 AGATAAAGAACAGTGTTCTACCCATGGTTACAGAGCACTAGAAGCTCCTTCCATTCCAGATCCAGGAGCT
 CTGTCTAAACATCATTCCAACCTTTGCAATCTTATAGACTACCCATCCATGAAAAACGCTTTGATACCA
 AGAATTAATAAGCTTGCTACAAAACATCTTCCCTTGGGTTTCGTGTAATTCATTAGTGTGCTTAGGAA
 AGATTTTGAATACTTGGATAAGTGGTTTGTACTTGATGATATCCTACCTTCTTACAACAAATTCATC
 CAAGGAACCTGCGGTCTCATGGGAATTTTAGGATTTACAAATGTACTTTTACTCATAAGAAGTTGGGA
 ATCACCAAGAGCAGCTGGCCGAAAAGTGTGCCTCATCTTATCCCTGAGTATTGAAAACAATCTTA
 ATCTTAATCAGTTCAATTTCTTTCATTTCCGTCAAAAAGAAATGCTTAATAGATTGGAGTCTGAACATAA
 GACTAAACTGGAGCAACTTCATATAATGCAAGAACAGCAGAAATCTTTGGATATAGGAAATCAAATGAAT
 GTTTCTGAGGAGATGAAAGTTACAAATATTGGGAATCAGCAAATGACAAAGTTTTTAACAACATTGGAG
 CAGACCTTCTGACTGGCAGTGAAGTCCGAAAATAAAGAGGACGGTTACAGAATAAACATAAAAGAGCATC
 ACTTACACTTGAAGAAAAACAAAATTAGCAAAAGAACAAGAGCAGGCACAGAAGCTGAAAAGCCAGCAG
 CCTTTAAACCCCAAGTGCACACCTGTTGCTACTGTTAAACAGACTAAGGACTTGACAGACACACTGA
 TGGATAATATGTCATCCTTGACCAGCCTTCTGTTAGTACCCCTAAATCTTCTGCTTCAAGTACTTTTAC
 TTCTGTTCCCTTCCATGGGCATTGGTATGATGTTTTCTACACCAACTGATAATAACAAGAGAAAATTTGACA
 AATGGCCATAAATGCCAATATGGGCTTTACAGACTTCAGGATTCAACATGCCCGTTAATACAACACAGAACT
 TCTACAGTAGTCCAAGCAGATTGGAGTGACCAAGATGACTCTGGGAACCTCCCACTTTGCAAACCTT
 CAATGCTTTGAGTGTTCCTCCTGCTGGTCAAAGCAGACCCAACAAGACCCACAGATATGTCTGCCCTT
 AATAATCTCTTTGGCCCTCAGAAACCAAAAGTTAGCATGAACCAGTTATCACAACAGAAACCAAATCAGT
 GGCTTAATCAGTTTGTACCTCCTCAAGTTCTCCAATATGGGCAGTTCAGTAATGGGGACACAGATGAA
 CGTGATAGGACAATCTGCTTTTGGTATGCAGGTAATCCTTTCTTAACCCACAGAACTTTGCACAGCCA
 CCAACTACTATGACCAATAGCAGTTCAGCTAGCAATGATTTAAAAGATCTTTTTGGG

ACGCGTACGCGGCCGCTCGAG – GFP Tag – GTTTAA

Protein Sequence: >RG209051 representing NM_017988
 Red=Cloning site Green=Tags(s)

MESMLNKLKSTVTKVTADVTSAVMGNPVTREFDVGRHIASGGNGLAWKIFNGTKKSTKQEVAVFVFDKLL
 IDKYQKFEKQI IDSLKRGVQQLTRLRHPRLTVQHPLEESRDCLAFCTEPVFASLANVLGNWENLPSP
 SPDIDKYKLYDVETKYGLLQVSEGLSFLHSSVKMVHGNIPTENIILNKSGAWKIMGFDFCVSSTNPSEQE
 PKFPCKEWDPNLPSLCLPNPEYLAPEYILSVSCETASDMYSLGTVMYAVFNKGKPIFEVKNQDIYKFSR
 QLDQLSRLGSSSLTNIPEEVREHVKLLLNVTPTVRPDADQMTKIPFFDDVGAVTLQYFDTLFQRDNLQKS
 QFFKGLPKVLPKLPKRVI VQRILPCLTSEFVNDPMVFPVLPNVLIIAEECTKEEYVKLILPELGPVFKQQ
 EPIQILLIFLQKMDLLLTKTPDEIKNSVLPVYRALEAPSIQIQELCLNIIPTFANLIDYPSMKNALIP
 RIKNAQLQTSSLAVRVNSLVCLGKILEYLDKWFVLDLILPFLQQIPSKEPAVLMGILGIYKCTFTHKLG
 ITKEQLAGKVLPHLIPLSIENNLNLNQFNSFISVIKEMLNRLSEHKTKLEQLHIMQEQKSLDIGNQMN
 VSEEMKVTNIGNQQIDKVFNNIGADLLTGSESENKEDGLQNKHKRASLTLEEKQLAKEQEQAQKLSQQ
 PLKPQVHTPVATVKQTKDLTDTLMDNMSLTSLSVSTPKSSASSTFTSVP SMGIGMMFSTPTDNTKRNL
 NGLNANMGFQTSGFNMPVNTNQFYSSPSTVGVTKMTLGTPTLPNPNALSVPPAGAKQTQQRPTDMSAL
 NNLFGPQPKVSMNQLSQKPNQWLNQFVPPQGSPTMGSSVMGTQMNVIQSAFGMQGNPFFNPQNF AQP
 PTTMTNSSASNDLKDLFG

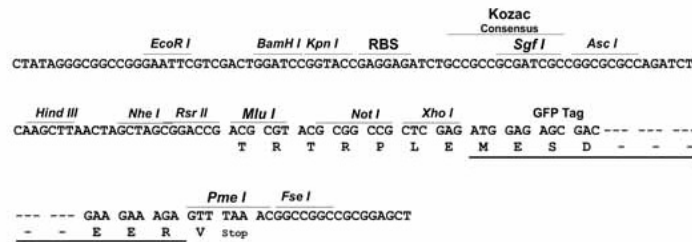
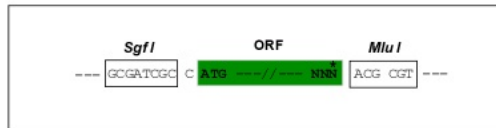
TRTRPLE – GFP Tag – V

Restriction Sites:

SgfI-MluI

Cloning Scheme:

Cloning sites used for ORF Shuttling:

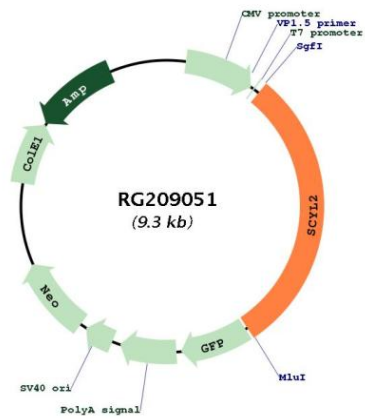


ACCN:

NM_017988

ORF Size:	2787 bp
OTI Disclaimer:	The molecular sequence of this clone aligns with the gene accession number as a point of reference only. However, individual transcript sequences of the same gene can differ through naturally occurring variations (e.g. polymorphisms), each with its own valid existence. This clone is substantially in agreement with the reference, but a complete review of all prevailing variants is recommended prior to use. More info
OTI Annotation:	This clone was engineered to express the complete ORF with an expression tag. Expression varies depending on the nature of the gene.
Components:	The ORF clone is ion-exchange column purified and shipped in a 2D barcoded Matrix tube containing 10ug of transfection-ready, dried plasmid DNA (reconstitute with 100 ul of water).
Reconstitution Method:	<ol style="list-style-type: none">1. Centrifuge at 5,000xg for 5min.2. Carefully open the tube and add 100ul of sterile water to dissolve the DNA.3. Close the tube and incubate for 10 minutes at room temperature.4. Briefly vortex the tube and then do a quick spin (less than 5000xg) to concentrate the liquid at the bottom.5. Store the suspended plasmid at -20°C. The DNA is stable for at least one year from date of shipping when stored at -20°C.
RefSeq:	NM_017988.6
RefSeq Size:	3818 bp
RefSeq ORF:	2790 bp
Locus ID:	55681
UniProt ID:	Q6P3W7
Cytogenetics:	12q23.1
Protein Families:	Druggable Genome, Protein Kinase
Gene Summary:	The protein encoded by this gene associates with clathrin-coated complexes at the plasma membrane and with endocytic coated vesicles. The encoded protein phosphorylates the beta2 subunit of the plasma membrane adapter complex AP2 and interacts with clathrin, showing involvement in clathrin-dependent pathways between the trans-Golgi network and the endosomal system. In addition, this protein has a role in the Wnt signaling pathway by targeting frizzled 5 (Fzd5) for lysosomal degradation. Two transcript variants encoding the same protein have been found for this gene. [provided by RefSeq, Dec 2015]

Product images:



Circular map for RG209051